

BRAND NEW CANDIDATES FOR DEEP SCHMIDT PLATES

M.Capaccioli¹, E.Davoust², G.Lelièvre³, J.-L.Nieto⁴
1: Istituto di Astronomia, Università di Padova
2: Observatoire de Besançon
3: CFHT Corporation and Observatoire de Paris
4: Observatoire du Pic du Midi et de Toulouse

With reference to the complementarity between large-scale, low-resolution and small-scale, high-resolution telescopes (Capaccioli et al., 1984), we briefly report here on very recent CFH telescope photographic observations of early-type galaxies which are good candidates for further investigations with Schmidt-type telescopes. The photographs were taken at the newly installed f/8 Cassegrain focus with good seeing conditions. The large scale (~ 7 arcsec mm⁻¹) allows to overcome some of the major difficulties encountered in the reduction of the prime focus high resolution (FWHM ≈ 0.75) material (Nieto, 1983).

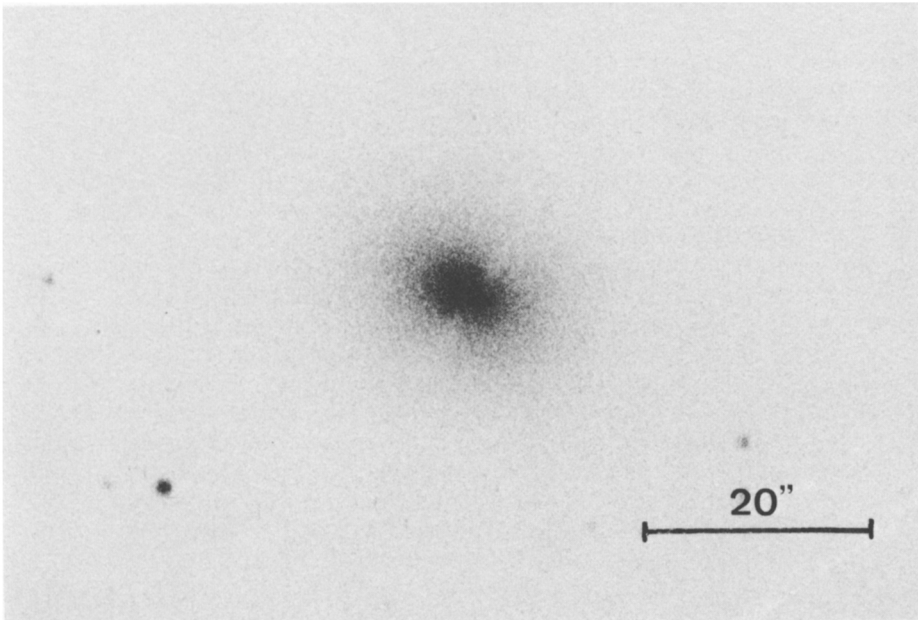


Figure 1. NGC 6702 from a IIaO + GG385 plate (exposure time 30 minutes).

Visual inspection of the plates already provides some new astrophysical information on two galaxies:

- NGC 584. This galaxy, known to be a good example of the class of ellipticals with isophotal twisting (Williams and Schwarzschild, 1979), turns out to be a lenticular with bulge, lens and disk clearly visible.
- NGC 6702. This is a new prominent example of the elliptical galaxies with a dust lane along the minor axis (Figure 1).

REFERENCES

- Capaccioli, M., Davoust, E., Lelièvre, G., Nieto, J.-L., 1984, this vol., p.393.
Nieto, J.-L., 1983, *Astron. Astrophys. Suppl. Sr.*, 53, 383.
Williams, T.B., Schwarzschild, M., 1979, *Astrophys. J. Suppl. Sr.*, 41, 209.