

CAMBRIDGE

JOURNALS

# Parasitology

## Editor-in-Chief

R. S. Phillips, University of Glasgow, UK

*Parasitology* is an important specialist journal covering the latest advances in the subject. It publishes original research and review papers on all aspects of parasitology and host-parasite relationships, including the latest discoveries in parasite biochemistry, molecular biology and genetics, ecology and epidemiology in the context of the biological, medical and veterinary sciences. Included in the subscription price are two special issues which contain reviews of current hot topics in parasitology, one of which is the proceedings of the annual Symposium of the British Society for Parasitology, while the second, covering areas of significant topical interest, is commissioned by the editors and the editorial board.

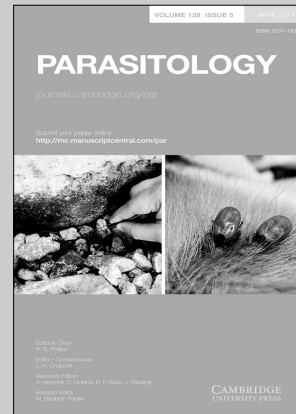
## Price information

is available at: <http://journals.cambridge.org/par>

## Free email alerts

Keep up-to-date with new material – sign up at  
<http://journals.cambridge.org/par-alerts>

For free online content visit:  
<http://journals.cambridge.org/par>



## Parasitology

is available online at:  
<http://journals.cambridge.org/par>

## To subscribe contact Customer Services

### in Cambridge:

Phone +44 (0)1223 326070  
Fax +44 (0)1223 325150  
Email [journals@cambridge.org](mailto:journals@cambridge.org)

### in New York:

Phone +1 (845) 353 7500  
Fax +1 (845) 353 4141  
Email  
[subscriptions\\_newyork@cambridge.org](mailto:subscriptions_newyork@cambridge.org)



CAMBRIDGE  
UNIVERSITY PRESS

CAMBRIDGE

JOURNALS

# Genetics Research

## Editor-in-Chief

T. F. C. Mackay, North Carolina State University, USA

## Executive Editors

D. J. Finnegan, University of Edinburgh, UK

William G. Hill, University of Edinburgh, UK

Shizhong Xu, University of California, USA

*Genetics Research* is a key forum for original research on all aspects of genetics. Building on the success and history of its previous incarnation, *Genetical Research*, the journal has a publishing remit that provides comprehensive coverage of subjects vital to the field, including: evolutionary and population genetics, genetics of complex traits, quantitative and statistical genetics, bioinformatics, genomics, molecular and developmental genetics, Evo-Devo, conservation genetics and environmental genetics.

## Price information

is available at: <http://journals.cambridge.org/grh>

## Free email alerts

Keep up-to-date with new material – sign up at  
<http://journals.cambridge.org/alerts>



## Genetics Research

is available online at:

<http://journals.cambridge.org/grh>

## To subscribe contact Customer Services

### in Cambridge:

Phone +44 (0)1223 326070

Fax +44 (0)1223 325150

Email [journals@cambridge.org](mailto:journals@cambridge.org)

### in New York:

Phone +1 (845) 353 7500

Fax +1 (845) 353 4141

Email

[subscriptions\\_newyork@cambridge.org](mailto:subscriptions_newyork@cambridge.org)

For free online content visit:  
<http://journals.cambridge.org/grh>



CAMBRIDGE  
UNIVERSITY PRESS

CAMBRIDGE

JOURNALS

# Proceedings of the Nutrition Society

Published on behalf of The Nutrition Society

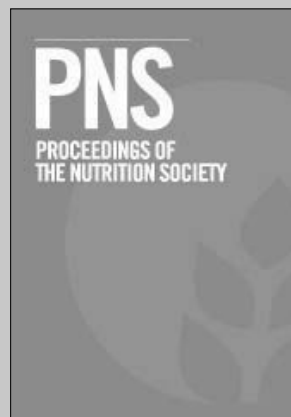
**Editor-in-Chief**

K.R. Westerterp, Maastricht University, The Netherlands

*Proceedings of the Nutrition Society* publishes papers and abstracts presented by members and invited speakers at the scientific meetings of The Nutrition Society. The journal provides an invaluable record of the scientific research currently being undertaken, contributing to 'the scientific study of nutrition and its application to the maintenance of human and animal health.'

[journals.cambridge.org/pns](http://journals.cambridge.org/pns)

Register for free content alerts  
[journals.cambridge.org/pns-alerts](http://journals.cambridge.org/pns-alerts)



**Impact Factor: 3.925**

2010 Journal Citation Reports®  
Thomson Reuter

To subscribe contact  
Customer Services

**Cambridge:**

Phone +44 (0)1223 326070  
Fax +44 (0)1223 325150  
[journals@cambridge.org](mailto:journals@cambridge.org)

**New York:**

Phone +1 (845) 353 7500  
Fax +1 (845) 353 4141  
[subscriptions\\_newyork@cambridge.org](mailto:subscriptions_newyork@cambridge.org)



CAMBRIDGE  
UNIVERSITY PRESS

# Go Mobile

CJO Mobile (CJOm) is a streamlined  
Cambridge Journals Online (CJO)  
for smartphones and other  
small mobile devices



- Use CJOm to access all journal content including *FirstView* articles which are published online ahead of print
- Access quickly and easily thanks to simplified design and low resolution images
- Register for content alerts or save searches and articles – they will be available on both CJO and CJOm
- Your device will be detected and automatically directed to CJOm via: [journals.cambridge.org](http://journals.cambridge.org)



**CAMBRIDGE**  
UNIVERSITY PRESS

## CONTENTS

### Breeding and genetics

- Haberland, A. M., König von Borstel, U., Simianer, H. and König, S.*  
Integration of genomic information into sport horse breeding programs for optimization of accuracy of selection 1369
- Stewart, I. D., White, I. M. S., Gilmour, A. R., Thompson, R., Woolliams, J. A. and Brotherstone, S.*  
Estimating variance components and predicting breeding values for eventing disciplines and grades in sport horses 1377
- Pabiou, T., Fikse, W. F., Amer, P. R., Cromie, A. R., Näsholm, A. and Berry, D. P.*  
Genetic relationships between carcass cut weights predicted from video image analysis and other performance traits in cattle 1389
- Khalajzadeh, S., Nejati-Javaremi, A. and Mehrbani Yeganeh, H.*  
Effect of widespread and limited use of sexed semen on genetic progress and reproductive performance of dairy cows 1398

### Nutrition

- Gidenne, T., Combes, S. and Fortun-Lamothe, L.*  
Feed intake limitation strategies for the growing rabbit: effect on feeding behaviour, welfare, performance, digestive physiology and health: a review 1407
- Quiniou, N., Monziols, M., Colin, F., Goues, T. and Courboulay, V.*  
Effect of feed restriction on the performance and behaviour of pigs immunologically castrated with Improvac® 1420
- Politis, I.*  
Reevaluation of vitamin E supplementation of dairy cows: bioavailability, animal health and milk quality (review) 1427
- García-Vaquero, M., Benedito, J. L., López-Alonso, M. and Miranda, M.*  
Histochemistry evaluation of the oxidative stress and the antioxidant status in Cu-supplemented cattle 1435

### Physiology and functional biology of systems

- Ni, Y. D., Wei, X. J., Zhang, C. X., Zhong, Y., Lu, L. Z., Grossmann, R. and Zhao, R. Q.*  
The effect of equol injection *in ovo* on lipid metabolism and hepatic lipogenic gene expression in broilers 1444
- Silanikove, N., Rauch-Cohen, A., Shapiro, F., Arieli, A., Merin, U. and Leitner, G.*  
Lipopolysaccharide challenge of the mammary gland in cows induces nitrosative stress that impairs milk oxidative stability 1451

### Behaviour, welfare and health

- Nielsen, B. L.*  
Effects of ambient temperature and early open-field response on the behaviour, feed intake and growth of fast- and slow-growing broiler strains 1460
- Kluivers-Poodt, M., Houx, B. B., Robben, S. R. M., Koop, G., Lambooj, E. and Hellebrekers, L. J.*  
Effects of a local anaesthetic and NSAID in castration of piglets, on the acute pain responses, growth and mortality 1469
- Andretta, I., Kipper, M., Lehnen, C. R., Hauschild, L., Vale, M. M. and Lovatto, P. A.*  
Meta-analytical study of productive and nutritional interactions of mycotoxins in growing pigs 1476
- Iraira, S. P., Ruiz de la Torre, J. L., Rodríguez-Prado, M., Manteca, X., Calsamiglia, S. and Ferret, A.*  
Effect of feeding method on intake and behaviour of individually reared beef heifers fed a concentrate diet from 115 to 185 kg of body weight 1483
- Cockram, M. S., Murphy, E., Ringrose, S., Wemelsfelder, F., Miedema, H. M. and Sandercock, D. A.*  
Behavioural and physiological measures following treadmill exercise as potential indicators to evaluate fatigue in sheep 1491

### Farming systems and environment

- Blanco-Penedo, I., López-Alonso, M., Shore, R. F., Miranda, M., Castillo, C., Hernández, J. and Benedito, J. L.*  
Evaluation of organic, conventional and intensive beef farm systems: health, management and animal production 1503
- O'Brien, D., Shalloo, L., Patton, J., Buckley, F., Grainger, C. and Wallace, M.*  
Evaluation of the effect of accounting method, IPCC v. LCA, on grass-based and confinement dairy systems' greenhouse gas emissions 1512
- Le Cotty, T. and Dorin, B.*  
A global foresight on food crop needs for livestock 1528

### Product quality, human health and well-being

- Bates, R. O., Doumit, M. E., Raney, N. E., Helman, E. E. and Ernst, C. W.*  
Association of halothane sensitivity with growth and meat quality in pigs 1537
- Daza, A., Latorre, M. A. and López-Bote, C. J.*  
The effect of granulated barley as single major ingredient in the growing or finishing diet on productive performance, carcass, meat and fat quality of heavy pigs 1543
- Lundesjö Ahnström, M., Hessle, A., Johansson, L., Hunt, M. C. and Lundström, K.*  
Influence of slaughter age and carcass suspension on meat quality in Angus heifers 1554

### Corrigendum

- Politis, I.*  
Reevaluation of vitamin E supplementation of dairy cows: bioavailability, animal health and milk quality – CORRIGENDUM 1563

