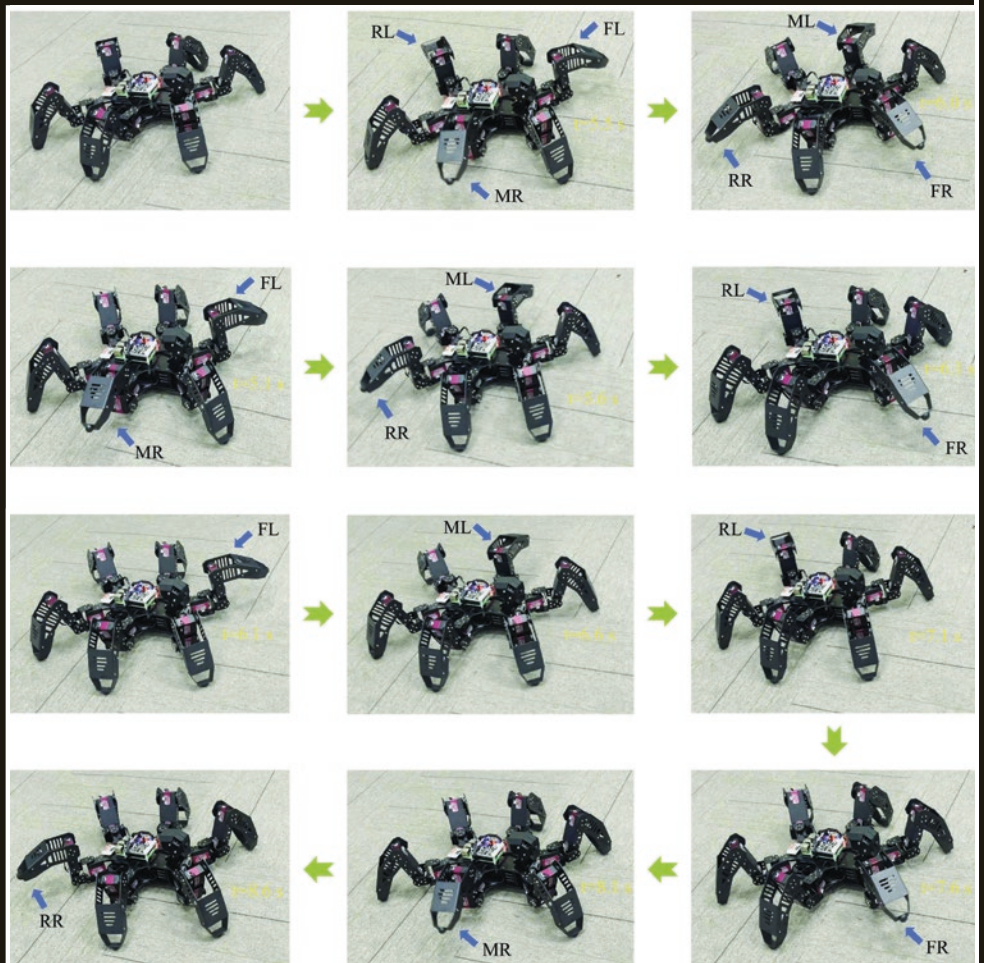


# ROBOTICA



[cambridge.org/rob](https://www.cambridge.org/rob)

# ROBOTICA

An IFAC-Affiliated Journal, and an  
Official Journal of the IFR.

International Journal of Information, Education and Research  
in Robotics and Artificial Intelligence

---

## EDITORS

Professor Jian S. Dai, *Centre for Robotics Research, King's College London, United Kingdom*

*E-mail: jian.dai@kcl.ac.uk*

Professor Giuseppe Carbone, *Department of Mechanical, Energy and Management Engineering, University of Calabria, Rende, Italy*

*E-mail: giuseppe.carbone@unical.it*

---

## EDITORIAL BOARD

See the following link for up to date editorial board details: <https://www.cambridge.org/core/journals/robotica/information/about-this-journal/editorial-board>

---

*Robotica* aims to be an outlet for publication of original papers of the highest quality in the field of Robotics and closely related areas. This includes: novel robotic mechanism and actuator design; robot kinematics, dynamics and control; computer vision; sensor fusion; teleoperation and haptic interfaces; robot motion planning; and artificial intelligence. In addition, papers that apply techniques from Robotics to other fields are also welcome. Examples include dynamics and control models applied to biological systems, the description of implementations of robots in factories, service and agricultural settings, and general mechatronic design. Works may be theoretical, computational or experimental, or some combination. Both short papers (rapid communications), and longer archival papers are welcome. Proposals for special issues on topics of current interest are welcome, and can be submitted via email to the editor.

This journal issue has been printed on FSC-certified paper and cover board. FSC is an independent, non-governmental, not-for-profit organization established to promote the responsible management of the world's forests. Please see [www.fsc.org](http://www.fsc.org) for information.

Cover Image: Figure 29. Zhang, Y., Liu, W. and Tan, N. (2024) 'Motion control of legged robots based on gradient central pattern generators', *Robotica*, pp. 1–30. doi:10.1017/S0263574724001309.

## COPYING

This journal is registered with the Copyright Clearance Center, 222 Rosewood Drive, Danvers, MA 01923. Organizations in the USA who are also registered with CCC may therefore copy material (beyond the limits permitted by sections 107 and 108 of US copyright law) subject to payment to CCC of the per-copy fee of \$16.00. This consent does not extend to multiple copying for promotional or commercial purposes. Code 0263–5747/2021/\$16.00.

ISI Tear Sheet Service, 3501 Market Street, Philadelphia, Pennsylvania 19104, USA, is authorised to supply single copies of separate articles for private use only.

Organizations authorized by the Copyright Licensing Agency may also copy material subject to the usual conditions.

For all other use, permission should be sought from Cambridge or the American Branch of Cambridge University Press.

Information on *Robotica* and all other Cambridge journals can be accessed via [cambridge.org/core](http://cambridge.org/core).