

# A multiplex PCR test to identify four common cattle-adapted *Cryptosporidium* species

SARAH THOMSON<sup>1</sup>, ELISABETH A. INNES<sup>1</sup>, NICHOLAS N. JONSSON<sup>2</sup> and FRANK KATZER<sup>1\*</sup>

<sup>1</sup> Moredun Research Institute, Pentlands Science Park, Bush Loan, Edinburgh EH26 0PZ, UK

<sup>2</sup> College of Medical, Veterinary and Life Sciences, University of Glasgow, 464 Bearsden Road, Glasgow G61 1QH, UK

(Received 10 December 2015; revised 25 February 2016; accepted 12 March 2016)

## SUMMARY

*Cryptosporidium* is a well-known cause of neonatal enteritis in cattle worldwide. Cattle are commonly infected with four different species of *Cryptosporidium* but only one of these, *Cryptosporidium parvum*, is associated with clinical disease. Identification of species in cases of calf scour can give an indication if *Cryptosporidium* is the causative agent or not. In addition, *C. parvum* is a zoonotic species and so has implications for human health, for this reason it is important to identify the species of *Cryptosporidium* infecting cattle particularly where a farm is implicated in an outbreak of cryptosporidiosis in humans. Here a multiplex PCR test, which can identify the four common cattle-adapted *Cryptosporidium* species, including *C. parvum*, has been developed. This test allows quick and accurate detection of *Cryptosporidium* species in cattle fecal samples including mixed infections, which could be missed by the more common method of sequencing the same gene.

Key words: *Cryptosporidium*, cattle, detection, multiplex, PCR.

## INTRODUCTION

Cryptosporidiosis is the disease caused by the protozoan parasite *Cryptosporidium*, which affects many different species of mammals, including humans, birds, reptiles, amphibians and fish (Fayer, 2010; Chalmers and Katzer, 2013; Ryan *et al.* 2014). It has been identified as one of the most important causes of bovine neonatal enteritis worldwide (De Graaf *et al.* 1999; Brook *et al.* 2008; Silverlas *et al.* 2009; Wyatt *et al.* 2010).

The disease usually manifests itself as profuse watery diarrhoea, loss of appetite and abdominal pain (Clark and Sears, 1996; Tzipori and Ward, 2002; Klein *et al.* 2008) which lasts approximately 2 weeks with little or no long-term implications on animal health (Klein *et al.* 2008). Most animals will recover but in severe cases complications may arise and death can occur. There are currently over 27 recognized species of *Cryptosporidium*, four of which commonly infect cattle; *Cryptosporidium parvum*, *Cryptosporidium andersoni*, *Cryptosporidium bovis* and *Cryptosporidium ryanae* (Chalmers and Katzer, 2013; Ryan *et al.* 2014).

Detection of *Cryptosporidium* in farm livestock is usually done by microscopy (in veterinary diagnostic laboratories) or by molecular detection (research laboratories); of the two methods molecular detection is much more sensitive and allows full speciation (Chalmers and Katzer, 2013). One of the most common genes targeted for PCR detection of

*Cryptosporidium* is the 18S rRNA gene, which is located on a multi-copy DNA element meaning that the PCR is more sensitive than those which target a single copy gene. The 18S rRNA gene is also one of the most commonly used genes for species discrimination and there are many 18S rRNA reference sequences available on the National Centre for Biotechnology Information website ([www.ncbi.nlm.nih.gov](http://www.ncbi.nlm.nih.gov)). In order to identify species in *Cryptosporidium*-positive samples, it is necessary to carry out sequencing or PCR-RFLP (polymerase chain reaction followed by restriction fragment length polymorphism). These methods can be expensive, time consuming and it is very difficult to detect mixed infections as often only the most predominant species in a sample is detected (Cama *et al.* 2006). PCR-RFLP can also detect only a limited number of species.

A multiplex PCR test would enable the rapid speciation of a subset of *Cryptosporidium* species and previous attempts have been made to develop such a test (Patel *et al.* 1999; Lindergard *et al.* 2003; Santin and Zarlenga, 2009); the most recent of which can detect the four most commonly found *Cryptosporidium* species in cattle (Santin and Zarlenga, 2009). This test cannot distinguish between *C. bovis* and *C. ryanae* and a further PCR amplification and sequencing would be required to distinguish these species.

In this paper, we describe the development of a multiplex PCR test to identify three cattle-adapted species (*C. andersoni*, *C. bovis* and *C. ryanae*) plus the zoonotic species *C. parvum* in a nested PCR. It is also possible with this multiplex PCR to detect other *Cryptosporidium* species by sequencing of the

\* Corresponding author. Moredun Research Institute, Pentlands Science Park, Bush Loan, Edinburgh, EH26 0PZ, UK. Tel.: +44 (0)31 445 5111. Fax: +44 (0)131 445 6111. E-mail: [frank.katzer@moredun.ac.uk](mailto:frank.katzer@moredun.ac.uk)

18S rRNA gene, where none of the other species have been detected. This PCR test will be extremely useful in veterinary diagnostics as a tool for accurate diagnosis of scour in neonatal calves and as a research tool to investigate the epidemiology of cryptosporidiosis. The nssm-PCR would allow speciation but would not permit sub-typing, which would be necessary for outbreak investigation. Current diagnostic methods can only confirm that *Cryptosporidium* spp. are present in the feces, but cannot distinguish the disease causing *C. parvum* species from the less virulent *C. andersoni* which has been associated with a reduction in weight-gain and milk yield in adult cattle, *C. bovis* and *C. ryanae*, which have not yet been associated with the clinical disease. The test is already being used to monitor calves on a veterinary school farm to ensure that the calves used for practical classes are free from *C. parvum* to minimize the risk to the students.

## MATERIALS AND METHODS

### Design of *Cryptosporidium* species-specific primers

Alignments of multiple 18S rRNA gene sequences (between 50 and 100 for each species) for *Cryptosporidium* species (*C. parvum*, *C. bovis*, *C. ryanae*, *C. andersoni*, *C. ubiquitum*, *C. hominis*, *C. muris*, *C. xiaoi* and *C. suis*) were made using the BioEdit Software Program ([www.mbio.ncsu.edu/bioedit/bioedit.html](http://www.mbio.ncsu.edu/bioedit/bioedit.html)) to identify representative sequences for each species. Clustal W ([www.ebi.ac.uk/Tools/msa/clustalw2](http://www.ebi.ac.uk/Tools/msa/clustalw2)) alignments of the representative sequences were made and regions for species-specific primers were identified which would produce amplicons of different sizes for each species when used with the 18S rRNA reverse primer (AL3032) (Xiao *et al.* 2000). The locations of the primers used are shown in Fig. 1; The outer primers are the same as those described by Xiao *et al.* 2000 (AL1691/AL1687) as are the first set of inner primers (AL1598 and AL3032) these amplify a 840 bp genus-specific fragment, the second inner primer set (CaF and AL3032) amplify a 625 bp fragment from *C. andersoni*; the third set (CrF and AL3032) amplify a 415 bp fragment from *C. ryanae* the forward primer in this set contains a degenerate base (R) where the *C. ryanae* sequence contains either an 'A' or a 'G'; the fourth set (CphF and AL3032) amplify a 305 bp fragment from *C. parvum*, *C. hominis* and *C. suis*, which can be later distinguished with an additional PCR if desired and the final set of primers (CbF and AL3032) amplify a 241 bp fragment from *C. bovis*. The primer sequences are shown in Table 1.

### Fecal sample collection and DNA extraction

Fecal samples ( $n=498$ ) were collected from 190 calves and 308 adult cattle from 21 beef farms as

part of another study. These samples were collected from calves aged 7–14 days regardless of clinical signs ( $n=116$ ), all calves suffering from diarrhoea regardless of age ( $n=74$ ), adult cattle pre- and post-calving ( $n=177$  and 120, respectively) and other adult cows ( $n=11$ ). Samples were collected by the farmers and sent to the Moredun Research Institute by their veterinary practices.

DNA was extracted from the calf feces processing with a QIAamp DNA Stool Minikit (Qiagen) according to the manufacturer's instructions except that 10× freeze–thaw cycles in liquid nitrogen were carried out after adding 200 µg sample to lysis buffer (provided in the kit). Adult feces were subjected to a sedimentation step prior to DNA extraction. The resultant pellet was added to lysis buffer and subjected to 10× freeze–thaw cycles in liquid nitrogen followed by processing by QIAamp DNA Stool Minikit (Qiagen) according to the manufacturer's instructions.

To identify *Cryptosporidium*-positive samples 18S nested PCR was carried out as described by Xiao *et al.* 2000. This work was carried out as part of another study at the Moredun Research Institute. Microscopic examination of the feces was not carried out for any of the samples.

### Testing of individual species-specific primers

First round reactions were carried out as described by Xiao *et al.* 2000 using DNA from known positive samples for each of the four species. Secondary reactions were carried out to test each individual species-specific forward primer with the reverse 18S rRNA primer (AL3032). First round PCR products were diluted with 50 µL dH<sub>2</sub>O and 1 µL of the dilution used as a template in a reaction containing 2.5 µL 10× PCR buffer (45 mM Tris–HCL pH 8.8, 11 mM (NH<sub>4</sub>)<sub>2</sub>SO<sub>4</sub>, 4.5 mM MgCl<sub>2</sub>, 4.4 µM EDTA, 113 µg mL<sup>-1</sup> BSA, 1 mM of each of the four deoxyribonucleotide triphosphates) (Katzer *et al.* 2014), 0.5 unit BioTaq (Bioline, UK) and 10 µM forward and reverse primers. The final volume of each reaction was made up to 25 µL using dH<sub>2</sub>O.

Cycling conditions were 3 min at 94 °C, followed by 35 cycles of 45 s at 94 °C, 45 s on a temperature gradient of 49–59 °C and 1 min at 72 °C. The final extension was 7 min at 72 °C. Second round PCR products were visualized following electrophoresis on a 1.5% agarose gel stained with GelRed™ (Biotium, UK) on an AlphaImager 2200.

### Field samples

Primers were tested on a panel of the only available DNA samples, which included known positive samples for *C. parvum*, *C. andersoni*, *C. bovis* and *C. ryanae* from naturally infected cattle aged from 1 day old to adult animals ( $n=128$ ). Results from

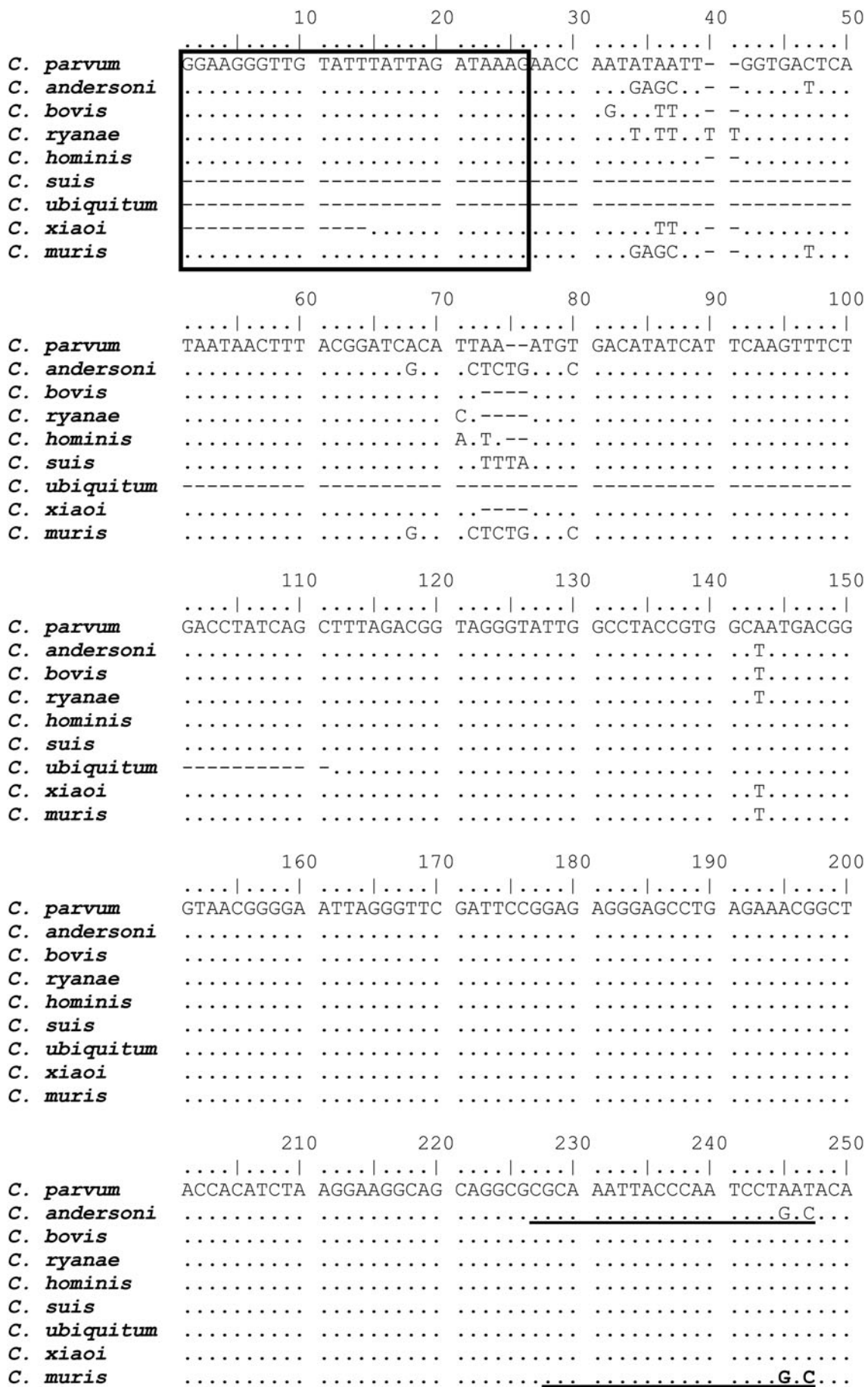


Fig. 1. Positions of species-specific primers on the 18S rRNA gene plus the location of the 18S rRNA internal primers.



	260	270	280	290	300
<i>C. parvum</i>	.... ....	.... ....	.... ....	.... ....	.... ....
	GGGAGGTAGT	GACAAGAAAT	AACAATACAG	GACTT-TT-T	GGTTTTGTAA
<i>C. andersoni</i>	.....	.....	.....	.G.C.-AA-C	...C.....
<i>C. bovis</i>	.....	.....	.....	A..C.-,A-C	.....
<i>C. ryanae</i>	.....	.....	.....	AG.C.-,A-C	.....
<i>C. hominis</i>	.....	.....	.....	.....-.-.	.....
<i>C. suis</i>	.....	.....	.....	.....T.-.	A.....
<i>C. ubiquitum</i>	.....	.....	.....	.....TAAA.	A.....
<i>C. xiaoi</i>	.....	.....	.....	A..C.-,A-C	.....
<i>C. muris</i>	.....	.....	.....	.G.C.-AA-C	...C.....
	310	320	330	340	350
<i>C. parvum</i>	.... ....	.... ....	.... ....	.... ....	.... ....
	TTGGAATGAG	TTAAGTATAA	ACCCCTTTAC	AAGTATCAAT	TGGAGGGCAA
<i>C. andersoni</i>	.....	.G.....	.....	G.....	.....
<i>C. bovis</i>	.....	.....	.....A..	.....	.....
<i>C. ryanae</i>	.....	.....	.....A..	.....	.....
<i>C. hominis</i>	.....	.....	.....	.....	.....
<i>C. suis</i>	.....	.....	.....C.	.....	.....
<i>C. ubiquitum</i>	.....	.....	.....	.....	.....
<i>C. xiaoi</i>	.....	.....	.....A..	.....	.....
<i>C. muris</i>	.....	.G.....	.....	G.....	.....
	360	370	380	390	400
<i>C. parvum</i>	.... ....	.... ....	.... ....	.... ....	.... ....
	GTCTGGTGCC	AGCAGCCGCG	GTAATTCCAG	CTCCAATAGC	GTATATTAAA
<i>C. andersoni</i>	.....	.....	.....	.....	.....
<i>C. bovis</i>	.....	.....	.....	.....	.....
<i>C. ryanae</i>	.....	.....	.....	.....	.....
<i>C. hominis</i>	.....	.....	.....	.....	.....
<i>C. suis</i>	.....	.....	.....	.....	.....
<i>C. ubiquitum</i>	.....	.....	.....	.....	.....
<i>C. xiaoi</i>	.....	.....	.....	.....	.....
<i>C. muris</i>	.....	.....	.....	.....	.....
	410	420	430	440	450
<i>C. parvum</i>	.... ....	.... ....	.... ....	.... ....	.... ....
	GTTGTTGCAG	TTAAAAAGCT	CGTAGTTGGA	TTTCTGTAA	TAATTTATAT
<i>C. andersoni</i>	.....	.....	.....	.....GT	AT.A..T...
<i>C. bovis</i>	.....	.....	.....AAT	C.....-	--...T...
<i>C. ryanae</i>	.....	.....	.....AAT	.....-	--...T...
<i>C. hominis</i>	.....	.....	.....	.....	.....
<i>C. suis</i>	.....	.....	T.....	.....	.....
<i>C. ubiquitum</i>	.....	.....	.....	.....	.....
<i>C. xiaoi</i>	.....	.....	.....AAT	C.....-	--...T...
<i>C. muris</i>	.....	.....	.....	.....GT	AT.A.CT-..
	460	470	480	490	500
<i>C. parvum</i>	.... ....	.... ....	.... ....	.... ....	.... ....
	AAAATATTTT	GA-TGAATAT	TTAT-ATAAT	ATTAACATAA	TTCATATTAC
<i>C. andersoni</i>	.--.....AC	C--AAGG..A	....T..T.	..C.....CC	...C.....T
<i>C. bovis</i>	.T-...A.A.	C--ACG...	.....	.....	.....
<i>C. ryanae</i>	<u>.T-.C.A.GC</u>	<u>T--ACGG</u>	.....	.....	.....
<i>C. hominis</i>	.....	.....	.....	.....	.....
<i>C. suis</i>	.T.....	T----.	.....	.....	.....
<i>C. ubiquitum</i>	.T.....	ATT--.	.....G.	.....	.....
<i>C. xiaoi</i>	.T-.C.A.A.	C--ACG...	.....	.....	.....
<i>C. muris</i>	.--.....AC	T--AAGG...	A...T..T.	..C.....CC	...C.....T

Fig. 1. Continued

	510	520	530	540	550
<i>C. parvum</i>	.... ....  TATATATTTT	---AGTATAT	GAAATTTTAC	TTTGAGAAAA	<b><u>TTAGAGTGCT</u></b>
<i>C. andersoni</i>	AT.-CTAAA.	----A....G	.....	.....	.....
<i>C. bovis</i>	.T.T..G---	-----	....C....	.....	.....
<i>C. ryanae</i>	.T.T..G---	-----	....C....	.....	.....
<i>C. hominis</i>	...T.T....	TTT.....	.....	.....	.....
<i>C. suis</i>	....AT....	ATT.....	.....	.....	.....
<i>C. ubiquitum</i>	....--....	AT-.....	.....	.....	.....
<i>C. xiaoi</i>	.T.T..G---	-----	....C....	.....	.....
<i>C. muris</i>	AT.TCTAAA.	----A....G	....C....	.....	.....
	560	570	580	590	600
<i>C. parvum</i>	<b><u>TAAAGCAGGC</u></b>	<b><u>ATA</u></b> TGCCTTG	AATACTCCAG	CATGGAATAA	TAT-TAAAGA
<i>C. andersoni</i>	.....	.AC.....	.....	.....	..AG...G..
<i>C. bovis</i>	.....	TAT.....	.....	.....	-.G..
<i>C. ryanae</i>	.....	TAT.....	.....	.....	-.G..
<i>C. hominis</i>	.....	.....	.....	.....	-.....
<i>C. suis</i>	.....	.....	.....	.....	..-A.....
<i>C. ubiquitum</i>	.....	..TA.....	.....	.....	..-A.....
<i>C. xiaoi</i>	.....	TAT.....	.....	.....	..-G..
<i>C. muris</i>	.....	.AC.....	.....	.....	..AG...G..
	610	620	630	640	650
<i>C. parvum</i>	TTTTTATCTT	TCTTATTGGT	TCTAAGATAA	GAATAATGAT	TAATAGGGAC
<i>C. andersoni</i>	C....G....	.....	....G..C..	A.G....G..	.....
<i>C. bovis</i>	.....TC.	.....	.... <b><u>GA</u></b> ....	<b><u>A...G</u></b> .....	.....
<i>C. ryanae</i>	.....TC.	.....	....GA....	A.....	.....
<i>C. hominis</i>	.....T.	.....	.....	.....	.....
<i>C. suis</i>	.....T.	.....	.....	A.....	.....
<i>C. ubiquitum</i>	.....T.	.....	.....	A.....	.....
<i>C. xiaoi</i>	.....TC.	.....	.... <b><u>GA</u></b> ....	<b><u>A...G</u></b> .....	.....A..
<i>C. muris</i>	C....G....	.....	....G..C..	A.G....G..	.....
	660	670	680	690	700
<i>C. parvum</i>	AGTTGGGGGC	ATTTGTATTT	AACAGTCAGA	GGTGAAATTC	TTAGATTTGT
<i>C. andersoni</i>	.....	..C.....	....C....	.....	.....
<i>C. bovis</i>	.....	.....	.....	.....	.....
<i>C. ryanae</i>	.....	.....	.....	.....	.....
<i>C. hominis</i>	.....	.....	.....	.....	.....
<i>C. suis</i>	.....	.....	.....	.....	.....
<i>C. ubiquitum</i>	.....	.....	.....	.....	.....
<i>C. xiaoi</i>	.....	.....	.....	.....	.....
<i>C. muris</i>	.....	..C.....	....C....	.....	.....
	710	720	730	740	750
<i>C. parvum</i>	TAAAGACAAA	CTAATGCGAA	AGCATTTGCC	AAGGATGTTT	TCATTAATCA
<i>C. andersoni</i>	.....G..	..C.....	.....	.....	.....
<i>C. bovis</i>	.....	..C.....	.....	.....	.....
<i>C. ryanae</i>	.....	..C.....	.....	.....	.....
<i>C. hominis</i>	.....	.....	.....	.....	.....
<i>C. suis</i>	.....	..G.....	.....	.....	.....
<i>C. ubiquitum</i>	.....	..G.....	.....	.....	.....
<i>C. xiaoi</i>	.....	..C.....	.....	.....	.....
<i>C. muris</i>	.....G..	..C.....	.....	.....	.....

Fig. 1. Continued

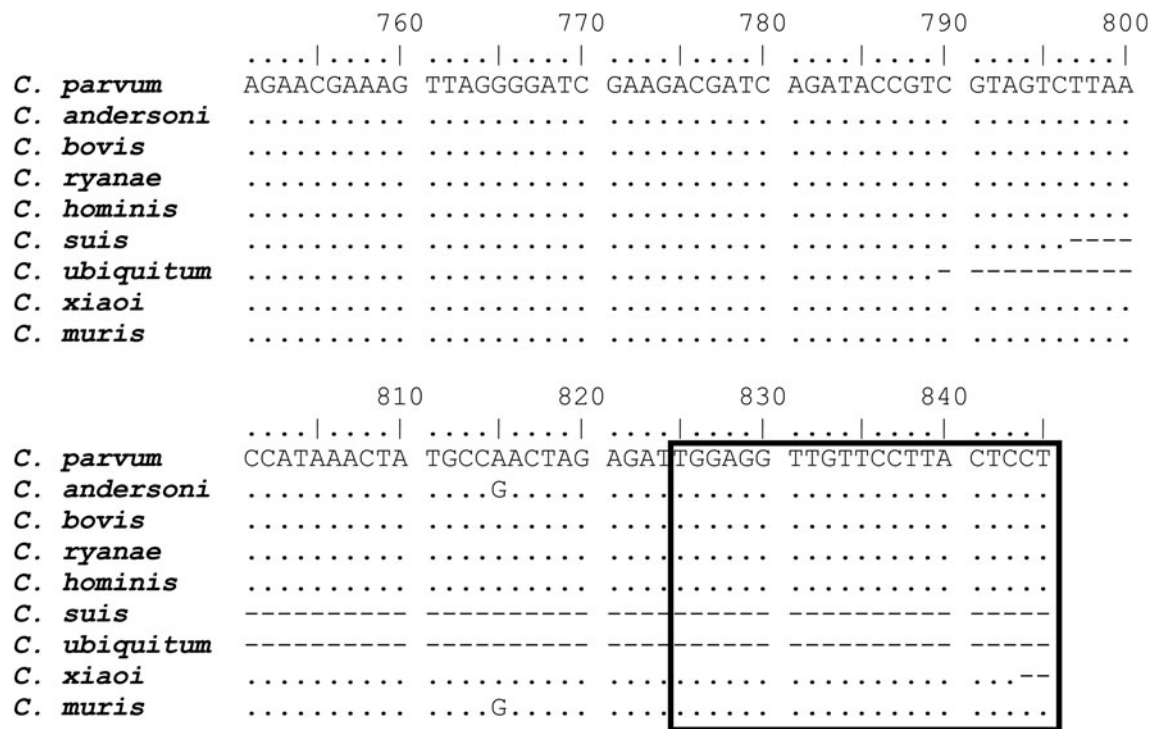


Fig. 1. Continued

the nssm-PCR were compared with sequence data for all of these samples.

#### Sequence analysis

To confirm the results of the nssm-PCR when testing field samples, sequence analysis of the 18S rRNA amplicon was carried out. Sequencing of PCR products was carried out by GATC (GATC, Germany) using their 'Light-run' service. Roughly 5  $\mu$ L of purified PCR product was sent at a concentration of between 20 and 80 ng  $\mu$ L with 5  $\mu$ L of the appropriate primer at a concentration of 5 pM  $\mu$ L. In some circumstances, instead of the light-run service, unpurified PCR products were

sent to GATC from sequencing using their 'Supremerun96' sequencing option which includes PCR purification. With this service 20  $\mu$ L PCR product was sent with a separate 1.5 mL tube containing 50  $\mu$ L of the appropriate primer at a concentration of 10 pM  $\mu$ L. Sequences were analysed using BioEdit Sequence Alignment Software ([www.mbio.ncsu.edu/bioedit/bioedit.html](http://www.mbio.ncsu.edu/bioedit/bioedit.html)) and Chromas Lite ([www.technelysium.com](http://www.technelysium.com)).

#### Sensitivity

The sensitivity of the nssm-PCR assay was assessed as part of another study (Wells B, Thomson S, Innes E.A and Katzer F Development of a sensitive

Table 1. Primer sequences, size of amplicon and species detected with each primer pair

Primer pair	Sequence 5'–3'	Fragment size (bp)	Species detected
AL1687 (EF) AL1691 (ER)	TTCTAGAGCTAATACATGCG CCCATTTCCTTCGAAACAGGA	1370	Genus-specific external
AL1598 (IF) AL3032 (IR)	GAAGGGTTGTATTTATTAGATAAAG AAGGAGTAAGGAACAACCTCCA	840	Genus-specific internal
CaF AL3032 (IR)	GCAAATTACCCAATCCTGAC AAGGAGTAAGGAACAACCTCCA	625	<i>C. andersoni</i>
CrF AL3032 (IR)	TGTTAATTTTATATACAAT <b><u>R</u></b> CTACGG AAGGAGTAAGGAACAACCTCCA	415	<i>C. ryanae</i>
CphF AL3032 (IR)	AGAGTGCTTAAAGCAGGCATA AAGGAGTAAGGAACAACCTCCA	305	<i>C. parvum</i>
CbF AL3032 (IR)	CTTCTTATTCCTTCTAGATAAAAAATG AAGGAGTAAGGAACAACCTCCA	241	<i>C. bovis</i>

<sup>a</sup> The degenerate base in the *C. ryanae* primer is shown in bold and underlined.



method to extract *Cryptosporidium* oocysts from adult cattle fecal samples – submitted). Fecal samples were spiked with *C. parvum* oocysts, subjected to different concentration steps and DNA extracted. The DNA was then amplified using the nssm-PCR.

RESULTS

Primer design

The primer designed for *C. parvum* will also amplify *C. hominis* and *C. suis*, the *C. andersoni* primer will also amplify *C. muris* and the *C. bovis* primer will amplify *C. xiaoi* as the 18S region of these species are very similar (Fig. 1). *Cryptosporidium suis* and *C. hominis* have only been found very rarely in cattle (Smith *et al.* 2005; Fayer *et al.* 2006) and *C. muris* and *C. xiaoi* have yet not been identified in cattle.

*Cryptosporidium*-specific 18S rRNA PCR

All 498 samples were tested for the presence of *Cryptosporidium* parasite DNA using the 18S genus-specific PCR, 4.13% (*n* = 13) of the samples from adult cattle and 60.5% (*n* = 115) of the samples from calves tested positive for *Cryptosporidium*. These samples were used to test the nssm-PCR.

Individual species PCR

Amplicons of the expected size for each species (*C. andersoni*, *C. ryanae*, *C. bovis* and *C. parvum*) were obtained when tested in a single species PCR with the species-specific forward primer and the 18S rRNA reverse primer. DNA was obtained from samples (confirmed by sequencing) from calves

aged <1 week (*C. parvum* DNA), calves aged 3 months (*C. bovis* and *C. ryanae* DNA) and an adult cow (*C. andersoni* DNA).

Nested species-specific multiplex PCR

Amplicons of the expected size for each of the four species (*C. andersoni*, *C. ryanae*, *C. parvum* and *C. bovis* – individually and mixed combinations) were obtained using the nssm-PCR assay (Fig. 2) from a variety of cattle samples collected from calves aged 7–14 days regardless of clinical signs (*n* = 116), all calves suffering from diarrhoea regardless of age (*n* = 74), adult cattle pre- and post-calving (*n* = 177 and *n* = 120, respectively) and other adult cows (*n* = 11). The expected amplicons for all four cattle species [*C. parvum* (*n* = 92), *C. andersoni* (*n* = 1), *C. ryanae* (only in mixed infections) and *C. bovis* (*n* = 13)] were observed as were various combinations of mixed infections (Fig. 2).

Occasionally an additional non-specific band appeared with the amplicon for *C. parvum* but of a different size to the species-specific bands. The results of the nssm-PCR were compared with sequence data for the 18S rRNA gene of these samples. In all cases, the single species of *Cryptosporidium* identified by nssm-PCR matched the species identified by sequencing. In addition, the nssm-PCR identified mixed infections in 14 of the samples examined. The mixed infections included; *C. bovis*, *C. parvum* and *C. ryanae* (*n* = 1), *C. ryanae* and *C. bovis* (*n* = 5), *C. parvum* and *C. bovis* (*n* = 1), *C. parvum* and *C. ryanae* (*n* = 1) and *C. andersoni* and *C. ryanae* (*n* = 6). These mixed infections were not identified by sequencing. Eight of the samples failed to amplify using the nssm-PCR.

Sensitivity

The sensitivity of the nssm-PCR when tested on fecal samples spiked with *C. parvum* oocysts was 5 opg (oocysts per gram of feces) (Table 2).

DISCUSSION

In this paper, we describe the development of a multiplex PCR test, which allows the discrimination

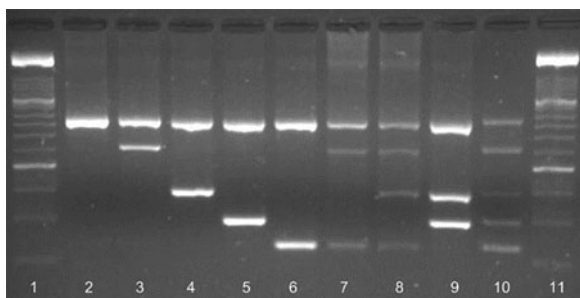


Fig. 2. Amplification of *Cryptosporidium* spp. on a 2% agarose gel stained with GelRed™ (Biotum, UK). Lane 1, 100 bp marker XIV (Roche); lane 2, 18S rRNA genus-specific amplicon (840 bp); lane 3, *C. andersoni* (625 bp); lane 4, *C. ryanae* (415 bp); lane 5, *C. parvum* (305 bp); lane 6, *C. bovis* (241 bp); lane 7, *C. andersoni* and *C. bovis*; lane 8, *C. andersoni*, *C. ryanae* and *C. bovis*; lane 9, *C. ryanae* and *C. parvum*; lane 10, nssm-PCR molecular marker; lane 11, 100 bp marker XIV (Roche). Amplicons in lanes 2–6 were produced using cloned DNA and lanes 7–9 were from naturally infected cattle.

Table 2. Sensitivity of nssm-PCR when tested on DNA extracted from feces spiked with 0, 5, 10, 100 or 1000 *C. parvum* oocysts per gram

	0	5	10	100	1000
	–	++	+++	+++	+++

–, negative; +, positive 1/3 PCRs; ++, positive 2/3 PCRs; +++, positive 3/3 PCRs.

of four of the most commonly detected *Cryptosporidium* species of cattle (one of which poses a risk to human health). The test allows the differentiation of these species by generating distinct amplicons of the 18S rRNA gene: *C. andersoni* (625 bp), *C. ryanae* (415 bp), *C. parvum* (305 bp) and *C. bovis* (241 bp) in addition to a *Cryptosporidium* genus-specific amplicon (840 bp). Currently, the most popular method of species identification in *Cryptosporidium*-positive samples is gene sequencing of the 18S rRNA gene. This method is very sensitive and can detect a large range of *Cryptosporidium* species and genotypes, but is limited when mixed infections occur as it has been shown that in a mixed sample either the dominant *Cryptosporidium* species is preferentially amplified by PCR meaning that only one species will be identifiable by sequencing or the sequence is unreadable (Santin *et al.* 2004; Cama *et al.* 2006; Silverlas *et al.* 2010). PCR amplification followed by sequence analysis is also more costly and time-consuming than multiplex PCR. The multiplex PCR described here allows the detection of mixed infections of up to four different common cattle species of *Cryptosporidium* and is an excellent method for detecting underlying infections of zoonotic *C. parvum* in calves which may have higher burdens of the less pathogenic *Cryptosporidium* species. This has very important implications for human health and the new test has also proven useful when determining which calves are most suitable for use in calf handing classes at a local veterinary school to reduce the risk of *Cryptosporidium* infection to students. It has also been used to identify the species of *Cryptosporidium* present in feces from adult cattle and their calves as part of a whole catchment study in the North East of Scotland (Wells *et al.* 2015).

In addition to the easy and quick visual differentiation of the four common cattle species other species of *Cryptosporidium* may be identified by sequencing of the 18S rRNA gene when a fragment responding to the *Cryptosporidium* genus-specific amplicon (840 bp) is amplified with no species-specific amplicons. At present, using this method, it is not possible to distinguish between *C. parvum* and *C. hominis* however, as *C. hominis* has rarely been detected in cattle (Smith *et al.* 2005; Park *et al.* 2006) there is, at this stage, no real need to distinguish between these two species.

The advantages of the PCR protocol described here over other methods used for species discrimination (PCR-RFLP, sequencing) are: (1) the ability to detect mixed infections, which may be missed by other methods; (2) the ability to identify other *Cryptosporidium* species by further sequencing when none of the 'cattle species' are detected as other species of *Cryptosporidium* may be a risk to other animals or humans; (3) the ability to test large numbers of samples quickly and easily; and

(4) the ability to detect subclinical infections of the zoonotic species *C. parvum* in animals shedding high numbers of the non-zoonotic species.

#### FINANCIAL SUPPORT

The authors would like to thank AHDB, EBLEX, HCC, QMS, DairyCo, BBSRC for funding awarded to Sarah Thomson and The Scottish Government for funding awarded to Elisabeth Innes and Frank Katzer.

#### REFERENCES

- Brook, E., Hart, C. A., French, N. and Christley, R. (2008). Prevalence and risk factors for *Cryptosporidium* spp. infection in young calves. *Veterinary Parasitology* **152**, 46–52.
- Cama, V., Gilman, R. H., Vivar, A., Ticona, E., Ortega, Y., Bern, C. and Xiao, L. (2006). Mixed *Cryptosporidium* infections and HIV. *Emerging Infectious Diseases* **12**, 1025–1028.
- Chalmers, R. M. and Katzer, F. (2013). Looking for *Cryptosporidium*: the application of advances in detection and diagnosis. *Trends in Parasitology* **29**, 237–251.
- Clark, D. P. and Sears, C. L. (1996). The pathogenesis of cryptosporidiosis. *Parasitology Today* **12**, 221–225.
- De Graaf, D. C., Vanopdenbosch, E., Ortega-Mora, L. M., Abbassi, H. and Peeters, J. E. (1999). A review of the importance of cryptosporidiosis in farm animals. *International Journal of Parasitology* **29**, 1269–1287.
- Fayer, R. (2010). Taxonomy and species delimitation in *Cryptosporidium*. *Experimental Parasitology* **124**, 90–97.
- Fayer, R., Santin, M., Trout, J. M. and Greiner, E. (2006). Prevalence of species and genotypes of *Cryptosporidium* found in 1–2-year-old dairy cattle in the eastern United States. *Veterinary Parasitology* **135**, 105–112.
- Katzer, F., Canton, G., Burrells, A., Palarea-Albaladejo, J., Horton, B., Bartley, P. M., Pang, Y., Chianini, F., Innes, E. A. and Benavides, J. (2014). Immunization of lambs with the S48 strain of *Toxoplasma gondii* reduces tissue cyst burden following oral challenge with a complete strain of the parasite. *Veterinary Parasitology* **205**, 46–56.
- Klein, P., Kleinova, T., Volek, Z. and Simunek, J. (2008). Effect of *Cryptosporidium parvum* infection on the absorptive capacity and paracellular permeability of the small intestine in neonatal calves. *Veterinary Parasitology* **152**, 53–59.
- Lindergard, G., Nydam, D. V., Wade, S. E., Schaaf, S. L. and Mohammed, H. O. (2003). A novel multiplex polymerase chain reaction approach for detection of four human infective *Cryptosporidium* isolates: *Cryptosporidium parvum*, types H and C, *Cryptosporidium canis*, and *Cryptosporidium felis* in fecal and soil samples. *Journal of Veterinary Diagnostic Investigation* **15**, 262–267.
- Park, J. H., Guk, S. M., Han, E. T., Shin, E. H., Kim, J. L. and Chai, J. Y. (2006). Genotype analysis of *Cryptosporidium* spp. prevalent in a rural village in Hwasun-Gun, Republic of Korea. *Korean Journal of Parasitology* **44**, 27–33.
- Patel, S., Pedraza-Diaz, S. and McLaughlin, J. (1999). The identification of *Cryptosporidium* species and *Cryptosporidium parvum* directly from whole faeces by analysis of a multiplex PCR of the 18S rRNA gene and by PCR/RFLP of the *Cryptosporidium* outer wall protein (COWP) gene. *International Journal for Parasitology* **29**, 1241–1247.
- Ryan, U., Fayer, R. and Xiao, L. (2014). *Cryptosporidium* species in humans and animals: current understanding and research needs. *Parasitology* **141**, 1667–1685.
- Santin, M. and Zarlenga, D. S. (2009). A multiplex polymerase chain reaction assay to simultaneously distinguish *Cryptosporidium* species of veterinary and public health concern in cattle. *Veterinary Parasitology* **166**, 32–37.
- Santin, M., Trout, J. M., Xiao, L., Zhou, L., Greiner, E. and Fayer, R. (2004). Prevalence and age-related variation of *Cryptosporidium* species and genotypes in dairy calves. *Veterinary Parasitology* **122**, 103–117.
- Silverlas, C., Emanuelson, U., de, V. K. and Bjorkman, C. (2009). Prevalence and associated management factors of *Cryptosporidium* shedding in 50 Swedish dairy herds. *Preventive Veterinary Medicine* **90**, 242–253.
- Silverlas, C., Naslund, K., Bjorkman, C. and Mattsson, J. G. (2010). Molecular characterisation of *Cryptosporidium* isolates from Swedish dairy cattle in relation to age, diarrhoea and region. *Veterinary Parasitology* **169**, 289–295.



- Smith, H. V., Nichols, R. A., Mallon, M., MacLeod, A., Tait, A., Reilly, W. J., Browning, L. M., Gray, D., Reid, S. W. and Wastling, J. M.** (2005). Natural *Cryptosporidium hominis* infections in Scottish cattle. *Veterinary Record* **156**, 710–711.
- Tzipori, S. and Ward, H.** (2002). Cryptosporidiosis: biology, pathogenesis and disease. *Microbes and Infection* **4**, 1047–1058.
- Wells, B., Shaw, H., Hotchkiss, E., Gilray, J., Ayton, R., Green, J., Katzer, F., Wells, A. and Innes, E.** (2015). Prevalence, species identification and genotyping *Cryptosporidium* from livestock and deer in a catchment in the Cairngorms with a history of a contaminated public water supply. *Parasites and Vectors* **8**, 66.
- Wyatt, C. R., Riggs, M. W. and Fayer, R.** (2010). Cryptosporidiosis in neonatal calves. *Veterinary Clinics of North America – Food Animal Practice* **26**, 89–103.
- Xiao, L., Alderisio, K., Limor, J., Royer, M. and Lal, A. A.** (2000). Identification of species and sources of *Cryptosporidium* oocysts in storm waters with a small-subunit rRNA-based diagnostic and genotyping tool. *Applied and Environmental Microbiology* **66**, 5492–5498.