

The Journal of
**THE ROYAL
AERONAUTICAL
SOCIETY**



CONTENTS

MARCH 1951

THE RELATIVE MERITS OF CENTRIFUGAL AND AXIAL
COMPRESSORS FOR AIRCRAFT GAS TURBINES

*E. S. MOULT, B.Sc., Ph.D., F.R.Ae.S., M.I.Mech.E.,
and H. PEARSON, B.A., A.F.R.Ae.S.*

METAL ADHESIVE PROCESSES

F. H. PARKER

METHOD FOR DESIGNING WIND TUNNEL CONTRACTIONS

R. HARROP

A NOTE ON THE BUCKLING OF STRUTS

HAROLD LURIE, Ph.D.

●
LONDON

ROYAL AERONAUTICAL SOCIETY, 4 HAMILTON PLACE, W.1



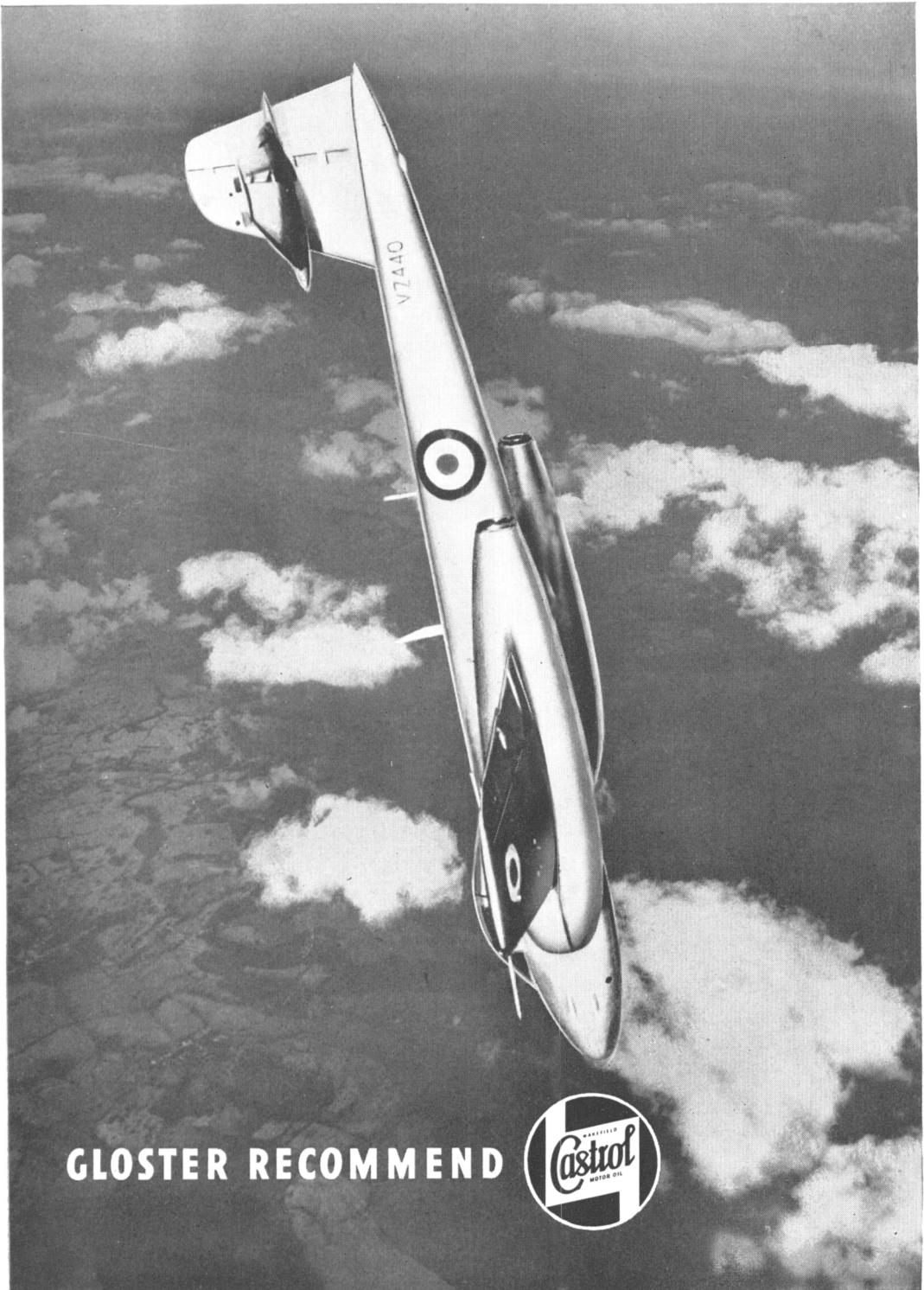
we can start and stop almost anything

When it comes to stopping modern high speed aircraft people in the Industry almost automatically think of B.B.A., because MINTEX brake linings are used on practically all British Aircraft. This supremacy, in the most exacting field of all, is the result of years of research and experimental work, the benefits of which are applied to the manufacture of all B.B.A. friction materials. No wonder they say — “When you’ve got to stop you can rely on MINTEX.”

BRITISH BELTING AND ASBESTOS LIMITED
CLECKHEATON, YORKSHIRE

Spinners, weavers and manufacturers of Asbestos Yarns, Cloths, Tapes, Packings and Jointings. Manufacturers of Machinery Belting for Industry; Manufacturers of MINTEX brake and clutch linings and other friction materials.





GLOSTER RECOMMEND



Leaders of an *Industry*

Responsible for a third of the RAF's wartime aircraft and more than ever leaders to-day — with a personnel of 38,000 and unmatched facilities for design, research and production — the Hawker Siddeley Group is the largest organisation of its kind in the world.



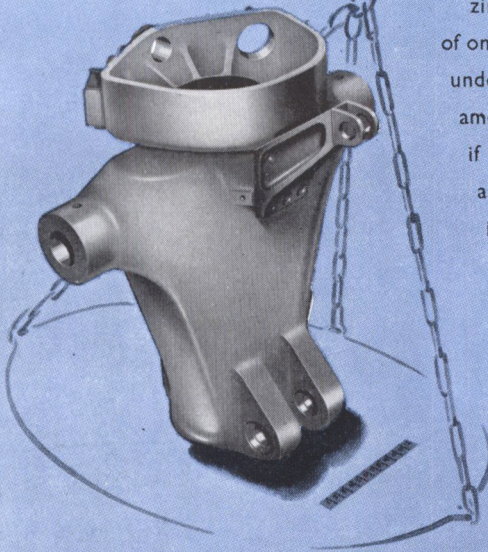
SIR W. G. ARMSTRONG WHITWORTH AIRCRAFT LTD.
ARMSTRONG SIDDELEY MOTORS LTD.
GLOSTER AIRCRAFT CO. LTD. · A. W. HAWKSLEY LTD.
HAWKER AIRCRAFT LTD. · HIGH DUTY ALLOYS LTD.
A. V. ROE & CO. LTD. · A. V. ROE CANADA LTD.
AIR SERVICE TRAINING LTD.

the Hawker Siddeley *Group*
LTD

18 St. James's Square, London, S.W.1. Tei: Whitehall 2064

UNDERCARRIAGE DEADWEIGHT REDUCED

Casting in "Elektron" Z.S.Z.
alloy by Sterling Metals Ltd.



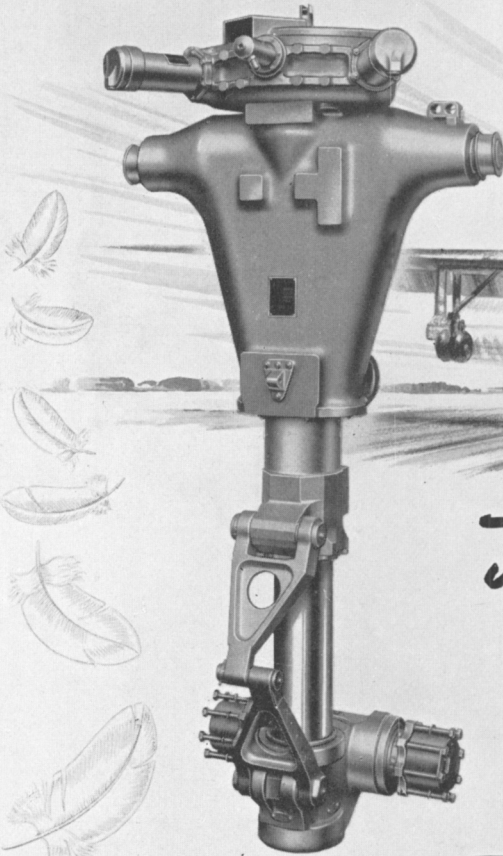
This casting in "Elektron" magnesium-zirconium alloy reduces the deadweight of one of the latest British Messier undercarriages by 30 lb. That is the extra amount this main body assembly would weigh, if it were cast for equivalent strength in aluminium alloy. No small reduction in weight to achieve in a modern aircraft — when every ounce saved is said to be worth a guinea to the airline operator. The "Elektron" magnesium-zirconium alloys are the lightest constructional metals obtainable today.

"ELEKTRON" MAGNESIUM-ZIRCONIUM ALLOYS

MAGNESIUM ELEKTRON LIMITED, Clifton Junction, Manchester.

London Office : Bath House, Piccadilly, W1

MESSIER UNDERCARRIAGES



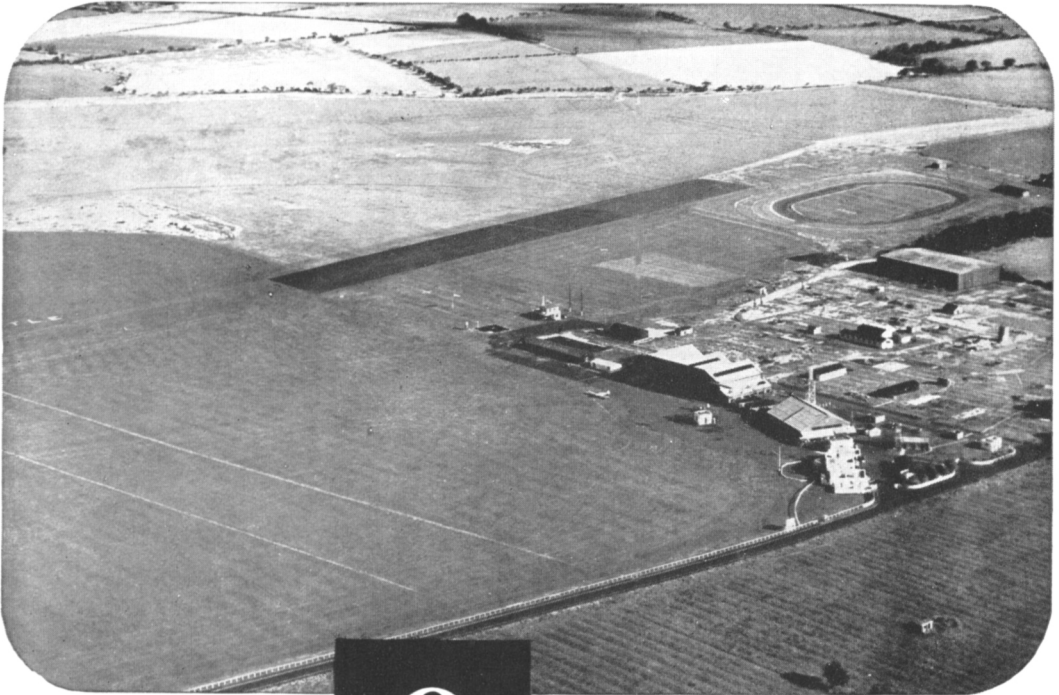
*Feather-weight
Touchdown!*

This Messier nosewheel undercarriage is designed to absorb energy on landing at the highest efficiency and, at the same time, allow adequate flexibility when taxiing. Powerful steering gear is fitted and shimmy is eliminated by rigidly coupled wheels.

BRITISH MESSIER LTD · GLOUCESTER

B S I

Do you know your airfields?



8

Recognize this airfield? It's No. 8 in this series of puzzle photographs. You'll find the answer below on the right.★

To numerous charter companies and flying clubs, to the pilots of twenty-three international airlines, the Aircraft Servicing Vehicles of the Shell and BP Aviation Service are a familiar sight. At twenty-five aerodromes throughout the country you will find this service on duty all the year round.

Shell and BP Aviation Service

Shell-Mex and B.P. Ltd., Shell-Mex House, Strand, W.C.2.
Distributors in the U.K. for the Shell
and Anglo-Iranian Oil Groups.

★Newcastle



WORLD-WIDE AUTHORITIES

ON EVERY ASPECT OF AVIATION—CIVIL AND MILITARY

FLIGHT Aviation's branches are today so numerous that the specialist who has to keep fully in touch with other people's progress must have up-to-the-minute information on every phase of technical research, development, equipment and operation. He will find it each week in **FLIGHT**—reliable, critically annotated and well illustrated news of the world's military, commercial and private aviation activities.

Thursdays 1s.

Annual subscription £3 1s.

AIRCRAFT PRODUCTION

In aircraft manufacture, as in design, the demands made upon the engineer are severe and often unprecedented. Continuous development of production methods is needed and an intimate knowledge of what is required is essential. Such knowledge can be obtained from the detailed practical articles published regularly in **AIRCRAFT PRODUCTION**, the only specialist journal in its field.

Monthly 2s. 6d.

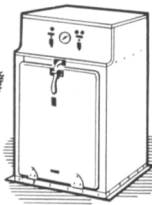
Annual subscription £1 13s.



ILIFFE AND SONS LIMITED, DORSET HOUSE, STAMFORD STREET, LONDON, S.E.1

viii

G.E.C. Electrical Equipment for Passenger Service in **AIRCRAFT** includes:-



**COOKERS
MOTORS
GENERATORS
RADIO**



**EQUIPMENT
REFRIGERATORS
HEATING and
VENTILATION**



**LIGHTING FITTINGS
OSRAM LAMPS
PIRELLI-GENERAL
CABLES**

Consult the

G.E.C.

*Aeronautical
Advisory
Service*

*Complete airport lighting
equipment and lighting
equipment for offices,
restaurants, hangars, etc.*

THE GENERAL ELECTRIC CO. LTD., MAGNET HOUSE, KINGSWAY, LONDON, W.C.2



He thinks the World of **Q-E-A**

TO-DAY'S seasoned traveller knows it's the combination of experience and organisation that makes Q.E.A. service the world's best in the air transport field to-day.

He knows Q.E.A. has come a long way in 30 years—from the time the pilot adjusted the passenger's goggles and heavy leather coat to the time when the Steward or Air Hostess provides a service that leaves nothing to be desired.

Here's what Q.E.A. passengers say—
Mr.....London/Sydney.

"During the period since the cessation of hostilities I have travelled by air to South America, North America, Canada, Africa and parts of Europe, and without reserve this has been the most satisfactory passage."

Mrs.....Sydney/Singapore.

"The many attentions of the excellent Steward and Stewardess are so much appreciated."

Mr.....Karachi/London.

"The Constellation is the most comfortable of the many planes I have been in."

(Original letters on file)

Fly by Q.E.A. Kangaroo Service (in association with B.O.A.C.) from London—via Rome, Cairo, Karachi, Calcutta, Singapore and Djakarta—to Sydney. Alternative route via Bombay and Colombo. Sydney to New Zealand (By TEAL). Sydney to New Guinea, and Pacific Islands. Sydney to Hong Kong. Sydney to Tokyo via Manila.



Qantas Empire Airways

in association with British Overseas Airways Corporation

A U S T R A L I A ' S I N T E R N A T I O N A L A I R L I N E

KB

ROTOLO

PROPELLERS & ACCESSORY
DRIVE EQUIPMENT



ROTOLO LIMITED • GLOUCESTER • ENGLAND





AT 114

Your number's nearly up, Dr. Mach !

VICKERS SUPERMARINE 535



VICKERS-ARMSTRONGS LTD · AIRCRAFT DIVISION · WEYBRIDGE AND SUPERMARINE WORKS

**THE AERONAUTICAL
QUARTERLY**

Volume II FEBRUARY 1951 Part IV

CONTENTS

Supersonic Flow Investigations with a "Hydraulic Analogy" Water Channel *Joseph Black and O. P. Mediratta*

Contracting Ducts of Finite Length *L. G. Whitehead, L. Y. Wu and M. H. L. Waters*

The Properties of Crossed Flexure Pivots and the Influence of the Point at which the Strips Cross *W. H. Wittrick*

An Analysis of the Lift on Straight, Yawed and Swept-back Wings *J. Lockwood-Taylor*

LONDON
ROYAL AERONAUTICAL SOCIETY
4 HAMILTON PLACE W1

10/-

PITMAN

Air Systems for Aircraft

By C. A. H. POLLITT, M.I.E.D., A.M.I.Ae.S. An up-to-date book describing the pneumatic equipment used in operating ancillary services in civil and military aircraft. With 95 illustrations, including two folding insets. 25/- net.

*Bennett's Complete
Air Navigator*

By Air Vice-Marshal D. C. T. BENNETT, C.B., C.B.E., D.S.O., F.R.Ae.S., F.R.Met.S. Fifth Edition. 25/- net.

"The facts are all there."—*FLIGHT*.

"Every good navigator should have this work."
—*AEROPLANE*.

Rapid Navigation Tables

By W. MYERSCOUGH and W. HAMILTON. Second Edition. 17/6 net.

"Both quicker and simpler than anything I have yet seen."
—*AEROPLANE*.

*Aircraft Engines of the
World, 1950*

By PAUL H. WILKINSON, A.F.I.Ae.S., A.F.R.Ae.S. A mine of information on jet engines and gas turbines, including eight pages of U.S.S.R. jet engine data and particulars of commercial turbojets; also full details of recent reciprocating engines. 150 illustrations. 50/- net.

PITMAN, Parker St., Kingsway, London WC2

*... two contributions
to 'pay-load'
and safety*

'FLEXELITE'

The new LIGHT WEIGHT
FLEXIBLE FUEL TANK
of SYNTHETIC RUBBER
and NYLON FABRIC.

'MAREX'

LIGHT ALLOY
HEAT EXCHANGERS
COOLERS, INTERCOOLERS
RADIATORS, etc., etc.

Fullest co-operation and advice from our Development Departments

MARSTON EXCELSIOR LTD

(A subsidiary company of Imperial Chemical Industries Ltd.)

WOLVERHAMPTON (TEL. FORDHOUSES 2181) AND LEEDS

MAR. 51a



**WHERE THE
SPERRY
ELECTRIC GYRO HORIZON**

IS SUPREME

High-speed jet combat aircraft are called upon to operate under a variety of conditions and the Sperry Electric Gyro Horizon is used constantly as an accurate attitude reference, its topple-free design making it eminently suitable. At high altitudes its electrical operation ensures that it remains fully effective and reliable.

Extensive Service trials have proved again the high quality of Sperry instruments and this Horizon is now being specified by the R.A.F. for its latest designs of jet aircraft.

Modern combat machines are called upon to fly at altitudes where the low atmospheric pressure precludes the use of vacuum-operated instruments as these become inaccurate and unreliable.

Similarly the air-driven Directional Gyros in jet aircraft are now superseded by the Sperry Gyro Magnetic Compasses, Mark 4 Series.

The Sperry Electric Gyro Horizon Type H.L.5 (Mk. 3) has complete freedom in roll throughout 360°—i.e., it is topple-free—and it will register 80° of climb or dive.

It is not affected by low outside temperatures.

It has a rotor that runs almost twice as fast as that of an air-driven instrument and its performance is correspondingly better.

It is free from air-filtration troubles.

There is no obstruction of horizon presentation by the front bearing support.

It is fully stressed for jet fighter operation.

It is easy to install and maintain. Power supply: 115-volt, 400-cycle, 3-phase A.C., or through an inverter connected to the normal 12 or 24-volt D.C. Supply.

It fits the standard instrument panel cut-out and thus can directly replace the air-driven Horizon.

SPERRY ELECTRIC GYRO HORIZON

THE SPERRY GYROSCOPE COMPANY LTD., GREAT WEST ROAD, BRENTFORD, MIDDLESEX. PHONE: EALING 6771

PAPERS FOR THE JOURNAL

The Council have set aside an annual sum of £250 for the award of premiums for papers published in the JOURNAL. Both members and non-members are invited to contribute original papers on their own special subjects. The following notes on the preparation of papers for the JOURNAL are given to assist contributors:—

COPYRIGHT

The copyright of every paper printed in the JOURNAL shall be the property of The Royal Aeronautical Society. If the author makes use of copyright material in his paper or information obtained by reason of his employment or otherwise, he must state clearly in his covering letter, or in the paper, that consent has been given for the use of such material.

MANUSCRIPTS

Papers must be in English, in the third person, and typed on one side of the paper only, with double spacing and wide margins. When submitted they must be in their *final form for publication*. Only typographical errors may be corrected in proofs. Titles of papers should be brief.

Where practicable, a summary of not more than 250 words should be given at the beginning of the paper, giving its scope and conclusions.

All references should be numbered in the text where they occur, and the complete list of references given at the end of the manuscript. These references will be published at the end of the text. Footnotes should be numbered consecutively. Tables should be kept as concise as possible.

ILLUSTRATIONS

Illustrations must be drawn so that they will reduce to column or two-column width, that is to $2\frac{5}{8}$ or $5\frac{1}{2}$ inches. Full page illustrations must reduce to $5\frac{1}{2}$ inches by 8 inches. All drawings must be in black ink on white paper or tracing cloth.

Lettering and figures on drawings must be in pencil only. Drawings should be posted flat or rolled.

Photographs should not be less than half plate in size and must be clear black and white glossy prints.

Every drawing and photograph should have on its back its figure number and title.

MATHEMATICS

Only very simple symbols and formulæ should be typewritten. All others should be written carefully by hand in ink. Ample space for marking should be allowed above and below all equations. Greek letters should be designated by name in the margin.

The difference between capital and lower-case letters should be clearly shown; care should be taken to avoid confusion between zero (0) and the letter o, between the numeral one (1) and the letter l, between alpha and a, kappa and k, mu and u, nu and v, eta and n.

All subscripts and exponents should be clearly marked, and dots, bars, and so on, over letters should be avoided as far as possible.

Square roots of complicated expressions should be written with the exponent $\frac{1}{2}$ rather than with the sign $\sqrt{\quad}$.

Complicated exponents and subscripts should be avoided. Any complicated expression that recurs frequently should be represented by a special symbol.

Unless an abbreviation is one recognised as standard practice, both in this and other English-speaking countries, for example b.h.p. for brake horse power, the meaning should be given in full on its first use.

EVERY BRITISH AIRCRAFT RELIES ON PLESSEY

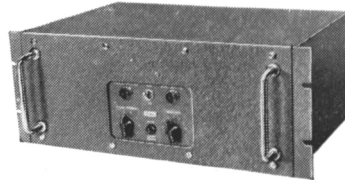


High performance, reliability and ease of control characterise this Plessey Communications Equipment, designed to meet international aeronautical requirements and fully tropicalised. Fully descriptive literature on any Plessey Communications Equipment is available to executives in the industry.

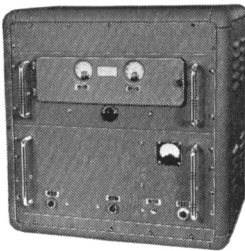
COMMUNICATIONS Equipment



PR 51 H.F. Receiver for high quality reception of R/T M.C.W. and C.W. in the 2-20 Mc/s band. Temperature compensated R.F. and oscillator circuits with crystal control or free tuning as required. Simple to maintain as valves and all major components are readily accessible. Fitted with automatic channel indication and muting control. Local or remote control.
Designed to International Aeradio Specification.

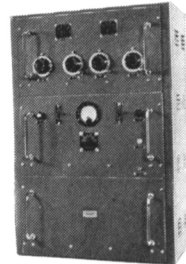


PR 71 Single channel crystal controlled V.H.F. receiver for R/T and M.C.W. in the 70-184 Mc/s band. High sensitivity and excellent stability over a wide temperature range. Local or remote control. The remote control unit incorporates a loudspeaker and provides all facilities, including automatic channel indication.
Designed to International Aeradio Specification.



PT 10 12 watt V.H.F. crystal controlled transmitter covering the 116-132 Mc/s band. Designed for simple operation with band pass circuits in the R.F. unit to reduce the number of tuning controls required, and a pre-set circuit in the modulator which automatically prevents over modulation.

PT 15 50 watt V.H.F. transmitter covering the 118-132 Mc/s frequency range, but can be supplied for other frequency ranges between 70 and 184 Mc/s to order. The operational frequency is crystal controlled. "Remote speech and "press to transmit" facilities over a distance of approximately 25 miles using a standard telephone pair.



PV 14 Wide band aerial amplifier enabling up to ten communication receivers to be operated from one common aerial system. Handles large signal inputs without overloading or cross-talk becoming excessive. Low noise factor. Available for 75 or 600 ohm inputs.
Designed to International Aeradio Specification.



PUMPS VALVES CARTRIDGE STARTERS "BREEZE" WIRING SYSTEMS ELECTRIC ACTUATORS RADIO COMMUNICATIONS

CE6.

THE PLESSEY COMPANY LIMITED · ILFORD · ESSEX

THE SOCIETY'S AWARDS

The Society offers a number of valuable awards, most of them annually. Full particulars of the conditions attaching to these awards may be obtained on application to the Secretary.

Society's Gold Medal

The highest honour which the Society can confer for work of an outstanding nature in aeronautics.

Society's Silver Medal

Awarded for work of an outstanding nature in aeronautics.

Society's Bronze Medal

Awarded for work leading to advance in aeronautics.

British Gold Medal for Practical Achievement in Aeronautics

Awarded for outstanding practical achievement leading to advancement in aeronautics.

British Silver Medal for Practical Achievement in Aeronautics

Awarded for practical achievement leading to advancement in aeronautics.

Wakefield Gold Medal

Awarded annually, at the discretion of the Council, to the designer or inventor of any apparatus tending towards safety in flying.

The George Taylor (of Australia) Gold Medal

Awarded annually, at the discretion of the Council, for the most valuable paper read during the previous session.

Simms Gold Medal

Awarded annually, at the discretion of the Council, for the most valuable contribution read before, or received by, the Society on any subject allied to aeronautics, e.g. structures, meteorology, metrology, etc.

Herbert Akroyd Stuart Memorial Prize

Awarded at the discretion of the Council for the most valuable contribution read before, or received by, the Society on applied thermodynamics.

Edward Busk Memorial Prize

Awarded annually, at the discretion of the Council, for the most valuable contribution read before, or received by, the Society on applied aerodynamics.

Orville Wright Prize

Offered annually for the best contribution on some subject of a technical nature in

connection with aeronautics, which is received by the Society and published in *The Aeronautical Quarterly*.

Pilcher Memorial Prize

Awarded annually, at the discretion of the Council, for the most valuable paper read by a Graduate or Student during the previous year at any meeting of the Society or its Branches.

Usborne Prize

Awarded annually, at the discretion of the Council, for the best contribution to the Society's publications written by a Graduate or Student on some subject of a technical nature in connection with aeronautics.

R. P. Alston Memorial Prize

Awarded for practical achievement associated with the flight testing of aircraft.

Major Baden-Powell Memorial Prize

Awarded to the best entrant in the Associate Fellowship Examination.

Wilbur Wright Memorial Premium

The Wilbur Wright Memorial Lecture is held annually, a premium of £75 being awarded to the lecturer, if British, or £125 if he is an American, invited by the Council to deliver the lecture. The lecture is usually given alternately by an American and an Englishman, and is the most important aeronautical lecture of the year.

British Commonwealth and Empire Lecture

The British Commonwealth and Empire Lecture is delivered annually by a lecturer chosen in alternate years from the British Dominions and Colonies and Great Britain.

The British Commonwealth and Empire Lecture has a premium of £50 and in the case of lecturers from the Dominions and Colonies an allowance is paid towards the lecturer's expenses.

Branch Prize

The Council offer an annual prize of twenty guineas for the best paper read before the Branches during the previous lecture session. The prize is open to any member of the Society or of any Branch.

FIRTH BROWN

1837-1951

EXPERIENCE & DEVELOPMENT IN HIGHEST QUALITY STEELS OF ALL GRADES

As manufacturers of Alloy Steels for High Duty, Firth Brown's contribution to industry is world wide, whether it be steels for engineering, shipbuilding, automobile, aircraft, road and rail transport or for the most minute mechanisms of the precision engineering industries. Firth Brown Steels were used in the production of the main propelling machinery forgings on the *Caronia*.

LIST OF PRODUCTS

Forgings—Light and Heavy for special and general engineering.

Forged Steel Drums and Pressure Vessels.

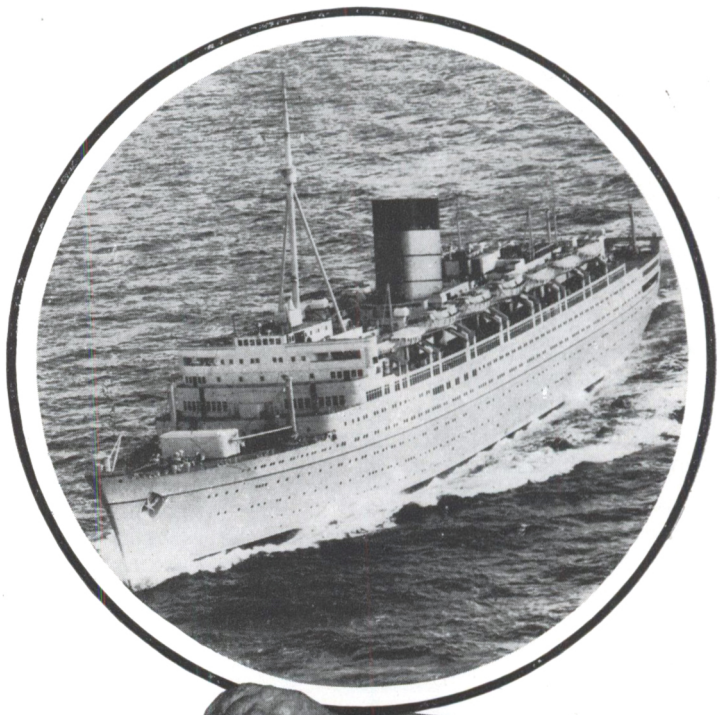
Hardened Steel Rolls.

Carbon and Alloy Steel Bars and Billets.

Tyres and Laminated Springs.

High Speed and Tool and Die Steels.

Steel Castings.



Write for the Firth Brown Buyers' Guide for further particulars.

THOS. FIRTH & JOHN BROWN LTD, SHEFFIELD
