

## Research Article

\*Present address: Departamento de Morfologia e Patologia Básica, Faculdade de Medicina de Jundiaí, Jundiaí, São Paulo, Brazil.

**Cite this article:** Reimão JQ, Uliana SRB (2018). Tamoxifen alters cell membrane properties in *Leishmania amazonensis* promastigotes. *Parasitology Open* 4, e6, 1–6. <https://doi.org/10.1017/pao.2018.3>

Received: 19 October 2017  
Revised: 19 January 2018  
Accepted: 25 January 2018

**Key words:**

*Leishmania amazonensis*; mitochondria; membrane; selective oestrogen receptor modulator; tamoxifen

**Author for correspondence:**

Silvia R. B. Uliana, E-mail: [srbulian@icb.usp.br](mailto:srbulian@icb.usp.br)

# Tamoxifen alters cell membrane properties in *Leishmania amazonensis* promastigotes

Juliana Q. Reimão\* and Silvia R. B. Uliana

Departamento de Parasitologia, Instituto de Ciências Biomédicas, Universidade de São Paulo. Av. Prof. Lineu Prestes, 1374, São Paulo, SP, 05508-000, Brazil

**Abstract**

The treatment of leishmaniasis relies primarily on highly toxic, parenterally administered drugs. Therefore, the search for more effective and safer drugs is considered a priority for leishmaniasis' control. The antileishmanial activity of the oestrogen receptor modulator tamoxifen was previously described in experimental models of leishmaniasis. However, the mechanisms responsible for the antileishmanial activity of tamoxifen remain unknown. Since tamoxifen has been shown to affect plasma and intracellular membranes in tumour cells, the aim of this study was to investigate the activity of the drug on *Leishmania amazonensis* membranes. Through morphological analysis and labelling with propidium iodide and DiSBAC<sub>2</sub>(3), we demonstrated that tamoxifen led to plasma membrane depolarization without general membrane disruption or permeabilization. Tamoxifen also caused mitochondrial damage, with loss of membrane potential, as shown by Rhodamine 123 accumulation. Mitochondrial swelling followed, signalling the mitochondrial dysfunction. Therefore, the effect of tamoxifen on *Leishmania* is mediated, at least in part, by disorder in parasite's membranes. These alterations are sufficient to trigger a series of lethal events.

**Introduction**

Leishmaniasis is a spectrum of diseases estimated to give rise to over 1.5 million new cases each year in 98 countries, with 367 million people at risk. Clinical symptoms range from the disfiguring skin lesions of cutaneous leishmaniasis (CL) to the often fatal visceral leishmaniasis (VL). Approximately 0.4 million VL cases and 0.7–1.2 million CL cases are estimated to occur each year (den Boer *et al.* 2011; Alvar *et al.* 2012). Estimated mortality ranges between 20 and 40,000 leishmaniasis deaths annually (Alvar *et al.* 2012) although these numbers are probably an underestimate, given the lack of surveillance systems and frequency of misdiagnosis.

Human leishmaniasis treatment is based on the parenteral administration of highly toxic drugs, including pentavalent antimonials and amphotericin B. Only one drug, miltefosine, is available for oral administration but the selection of resistant parasites is now a concern. The need for the development of new treatment strategies for leishmaniasis is pressing (Rama *et al.* 2015).

Tamoxifen is a synthetic triphenylethylene in use for the treatment of oestrogen-responsive breast tumours since 1971. It has also been approved for the treatment of metastatic breast tumours and as a chemopreventive drug in groups with high risk for the development of breast cancer (reviewed in Jordan, 2002). Tamoxifen belongs to a drug class known as selective oestrogen receptor modulators (SERMs). SERMs exhibit tissue-specific oestrogen receptor agonist or antagonist activity. Binding of oestrogen to its receptors induces conformational changes that result in the recruitment of transcription factors and triggers the expression of oestrogen-dependent genes. Several oestrogen responsive genes are implicated in tumoral transformation and/or metastasis. Tamoxifen and other SERMs compete for receptor binding and trigger the recruitment of a distinct set of transcription factors or transcriptional co-repressors (reviewed in Jordan, 1984).

Tamoxifen also exhibits several other effects that are not dependent on the interaction with the oestrogen receptor, such as disruption of membrane physiology by drug accumulation in the lipid phase, inhibition of ATP dependent membrane acid transport, interference in ceramide and cholesterol metabolism, interaction with protein kinase C, modulation of calmodulin activity, and apoptosis induction (O'Brian *et al.* 1990; Wiseman *et al.* 1990; Cabot *et al.* 1996; Mandlekar and Kong, 2001). Tamoxifen has also been shown to alter membrane fluidity in various cell types. In erythrocytes of post-menopausal women (Tsuda and Nishio, 2005) and multilamellar liposomes (Severcan *et al.* 2000) the drug caused an increase in membrane fluidity, while in liposomes (Wiseman *et al.* 1993) and breast cancer cells (Clarke *et al.* 1990) a decrease in membrane fluidity was described. The study of interactions of tamoxifen with model lipid membranes showed that the drug increases the bilayer thickness and impairs lipid bilayer integrity (Khadka *et al.* 2015).

The activity of tamoxifen against different *Leishmania* species, such as *Leishmania (Leishmania) amazonensis* (Miguel *et al.* 2008), *Leishmania (Viannia) braziliensis*, *Leishmania (Leishmania) infantum chagasi* (Miguel *et al.* 2009) and *Leishmania (Leishmania) major*

© Cambridge University Press 2018. This is an Open Access article, distributed under the terms of the Creative Commons Attribution licence (<http://creativecommons.org/licenses/by/4.0/>), which permits unrestricted re-use, distribution, and reproduction in any medium, provided the original work is properly cited.

(Eissa *et al.* 2011) has been demonstrated both *in vitro* and in animal models. However, the mechanism responsible for tamoxifen's antileishmanial activity remains unknown. In this work, we investigated the effects of tamoxifen on *Leishmania* membranes.

The study was performed with promastigotes for several reasons. Amastigotes, which are the life stage found in the mammalian host, are intracellular parasites of macrophages, living inside the parasitophorous vacuoles. Therefore, the analysis of the membranes of amastigotes is complicated by the environment where they exist. When amastigotes are purified from *in vitro* cultured macrophages, the procedures involved may result in damage to the parasite and more specifically to their plasma membrane. On the other hand, while there are differences in the membrane composition of the two life stages, there are also many similarities (Goad *et al.* 1985; Berman *et al.* 1986), suggesting that traits observed in promastigotes are likely to be extensive to amastigotes. Another consideration is that, in the case of tamoxifen, both amastigotes and promastigotes are equally susceptible to the drug, as shown previously (Miguel *et al.* 2007).

## Material and methods

### Drugs

Tamoxifen was purchased from Sigma–Aldrich (St. Louis, MO, USA). Stock solutions of tamoxifen were prepared in DMSO for all experiments.

### Cell culture

Promastigotes of *Leishmania (Leishmania) amazonensis* (MHOM/BR/1973/M2269) were grown in M199 medium (Sigma–Aldrich) supplemented with 10% heat-inactivated fetal calf serum (FCS; Invitrogen) and 0.25% hemin and incubated at 25 °C.

### Promastigotes' viability assay

The viability of *L. amazonensis* stationary-phase promastigotes was evaluated in culture media or in phosphate-buffered saline (PBS) supplemented with 5 mM D-glucose (PBS + g). For quantification of drug activity, parasites were incubated in the presence of increasing concentrations of tamoxifen, assayed at a 2-fold dilution. Cell viability was assessed using the PrestoBlue Cell Viability Reagent (Invitrogen), according to the manufacturer's instructions. Fluorescence was evaluated in a microplate reader (POLARstar Omega, BMG Labtech, Ortenberg, Germany) ( $\lambda_{\text{ex}} = 544 \text{ nm}$ ;  $\lambda_{\text{em}} = 590\text{--}10$ ) after additional 2 h incubation with PrestoBlue. The half-maximal inhibitory concentrations ( $\text{IC}_{50}$ ) were determined from a sigmoidal regression of the concentration-response curves using GraphPad Prism 5.0 software. Assays were performed in triplicate and results were expressed as the mean and standard deviation of at least two independent experiments.

Morphological analysis of parasites under drug treatment was performed by taking aliquots of the parasite suspension in culture media and staining with Giemsa. Imaging of promastigote cultures was performed using a Zeiss AXIOVERT 10 microscope. Images were acquired from cells cultivated in 24-well plates and kept at 25 °C. At the times indicated in Supplementary Videos 1 and 2, plates were examined and filmed, under a 40 $\times$  objective, using a Canon G10 Wide 52 mm camera.

### Transmission electron microscopy

*Leishmania amazonensis* promastigotes ( $2 \times 10^7 \text{ mL}^{-1}$ ) were incubated with 20  $\mu\text{M}$  tamoxifen for 2 or 22 h at 25 °C in M199 medium, supplemented with 10% FCS. Parasites were then

centrifuged for 10 min at 230 g. Fixation of the pellet was performed in 2.5% glutaraldehyde: 4% paraformaldehyde in 0.1 M sodium cacodylate buffer (pH 7.4) followed by post-fixation in 1% osmium tetroxide, dehydration in acetone series and embedding in Epon resin. Ultrathin sections were obtained in a Sorvall Ultramicrotome, stained with uranyl acetate and lead citrate and observed under a JEOL transmission electron microscope operating at 80 kV. Images were recorded with a Gatan 785 ES1000W Erlangshen camera.

### Assessment of plasma membrane integrity

Propidium iodide (PI) was used to assess plasma membrane integrity of *L. amazonensis* promastigotes. Stationary-phase promastigotes ( $2 \times 10^7 \text{ mL}^{-1}$ ) were loaded with 10  $\mu\text{M}$  PI in PBS + g at 25 °C. Parasites were transferred into black polystyrene 96-well microplate and fluorescence was recorded continually ( $\lambda_{\text{ex}} = 530\text{--}10 \text{ nm}$ ;  $\lambda_{\text{em}} = 620 \text{ nm}$ ) in a microplate reader (POLARstar Omega, BMG Labtech) when tamoxifen at different concentrations was added to the wells. Parasites treated with 25  $\mu\text{M}$  digitonin were used as a positive control. Untreated parasites and parasites incubated with the highest volume of vehicle (DMSO) were used as negative controls. Three independent experiments were performed, each one with triplicate samples.

### Determination of plasma membrane electric potential ( $\Delta\Psi_p$ )

The effect of tamoxifen on promastigotes'  $\Delta\Psi_p$  was monitored by using the fluorescent probe bis-(1,3-diethylthiobarbituric acid) trimethine oxonol [DiSBAC<sub>2</sub>(3)] (Invitrogen) as previously described by Luque-Ortega and Rivas (2010). *Leishmania amazonensis* stationary-phase promastigotes ( $2 \times 10^7 \text{ mL}^{-1}$ ) were added to black polystyrene 96-well microplates in PBS containing 0.2  $\mu\text{M}$  DiSBAC<sub>2</sub>(3) in a final volume of 100  $\mu\text{L}$  per well. The plate was incubated at 25 °C and fluorescence was recorded ( $\lambda_{\text{ex}} = 544 \text{ nm}$ ;  $\lambda_{\text{em}} = 584 \text{ nm}$ ) every 2 min in a microplate reader (POLARstar Omega, BMG Labtech). After signal stabilization, 5  $\mu\text{M}$  tamoxifen was added. Valinomycin 5  $\mu\text{M}$  (Sigma–Aldrich) was used as a positive control. Untreated parasites and parasites incubated with the highest volume of diluent (DMSO) were used as negative controls. To test whether tamoxifen or valinomycin interfered in DiSBAC<sub>2</sub>(3) fluorescence, the drugs were assayed in the absence of cells. Three independent experiments were performed, each one with triplicate samples.

### Evaluation of mitochondrial transmembrane electric potential ( $\Delta\Psi_m$ )

Changes in  $\Delta\Psi_m$  induced by tamoxifen were registered by flow cytometry, using the fluorescent probe rhodamine 123 (Rh123) (Sigma–Aldrich) as previously described by Luque-Ortega and Rivas (2010). *Leishmania amazonensis* stationary-phase promastigotes ( $2 \times 10^7 \text{ mL}^{-1}$ ) were resuspended in Hank's balanced salt solution supplemented with 10 mM D-glucose (HBSS + g) (137 mM NaCl, 5.3 mM KCl, 0.4 mM KH<sub>2</sub>PO<sub>4</sub>, 4.2 mM NaHCO<sub>3</sub>, 0.4 mM Na<sub>2</sub>HPO<sub>4</sub>, pH 7.2, 10 mM D-glucose) and incubated with tamoxifen (0.3 to 10  $\mu\text{M}$ ) at 25 °C for 20 min. After treatment, parasites were washed twice in HBSS + g, loaded with Rh123 (0.3  $\mu\text{g mL}^{-1}$ , 10 min, 37 °C), washed twice in HBSS + g and analysed by flow cytometry. Fluorescence emission was quantified using the CytoSoft 4.2.1 software as described above. Parasites incubated with 100  $\mu\text{M}$  carbonyl cyanide 4-(trifluoromethoxy)phenylhydrazone (FCCP, Sigma–Aldrich) were used as a positive control. Untreated parasites and parasites incubated with the highest volume of diluent (DMSO) were used as negative controls. Results were obtained from three independent experiments.

### Statistical analysis

Data were compared using one-way analysis of variance followed by Tukey's multiple range test and considered statistically significant when  $P < 0.05$ . Statistical analyses were performed using GraphPad Prism 5 software.

## Results

### Evaluation of plasma membrane integrity

The  $IC_{50}$  of tamoxifen for promastigotes of *L. amazonensis* treated in culture media for 24 h was determined as  $13.48 \pm 1.22 \mu\text{M}$ . The morphological evaluation of promastigotes treated with  $20 \mu\text{M}$  tamoxifen in culture medium for various periods of time revealed that up to 2 h, most cells remained intact (Fig. 1). With prolonged incubation times, the morphology changed with round cells appearing to be vacuolized (Fig. 1F–H).

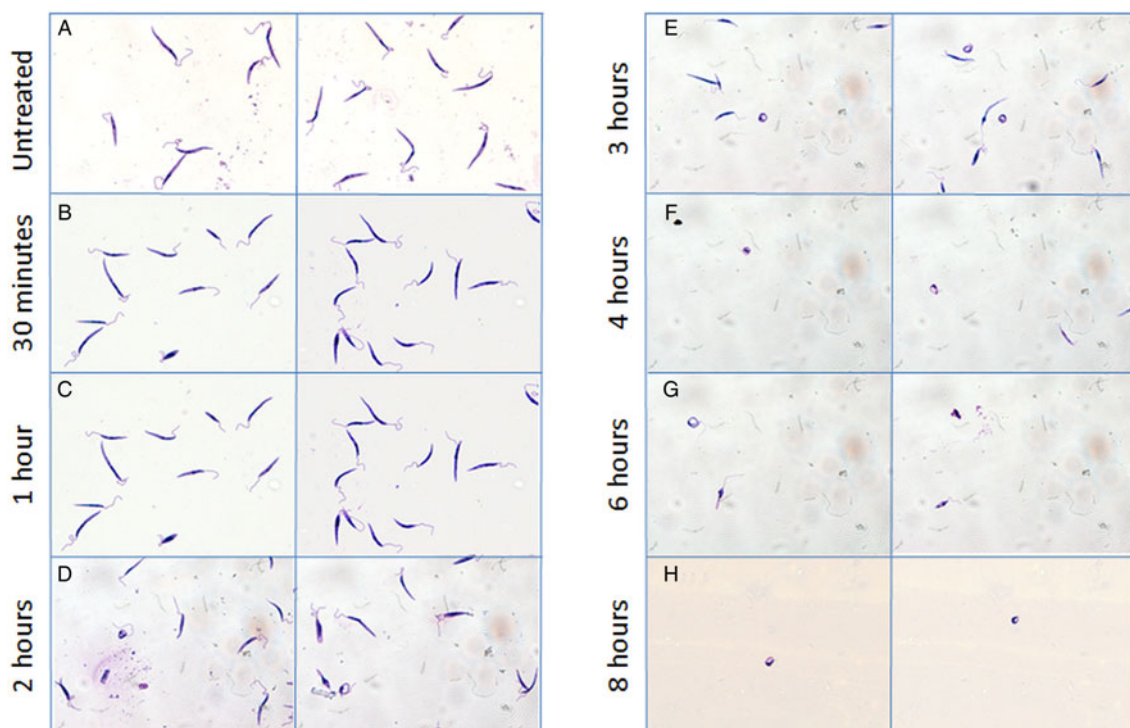
The morphological and motility changes were also observed by imaging cultures under drug treatment: parasites incubated in culture medium and  $10 \mu\text{M}$  tamoxifen showed reduced motility from 90 min without general morphological disruption. Parasites then started to aggregate forming groups of cells. Until 8 h post-treatment, mobile cells were still observed, in progressively lesser numbers in the midst of the parasite aggregates (Supplementary Video 1). The same characteristics were observed in cultures treated with  $20 \mu\text{M}$  tamoxifen (Supplementary Video 2). However, in these conditions, changes were faster and loss of motility was observed in nearly all cells after 8 h of treatment.

Transmission electron microscopy of parasites treated with tamoxifen confirmed that, after 2 h of treatment, the plasma membrane remained intact (Fig. 2B–D). Mitochondrial damage was observed through swelling and loss of the matrix content (Fig. 2D, star). Promastigotes treated with tamoxifen also presented structures reminiscent of autophagic vacuoles (Fig. 2C and D). After 22 h of treatment, the plasma membrane was still observable in cells that have lost most of their internal organelles and content (Fig. 2E and F).

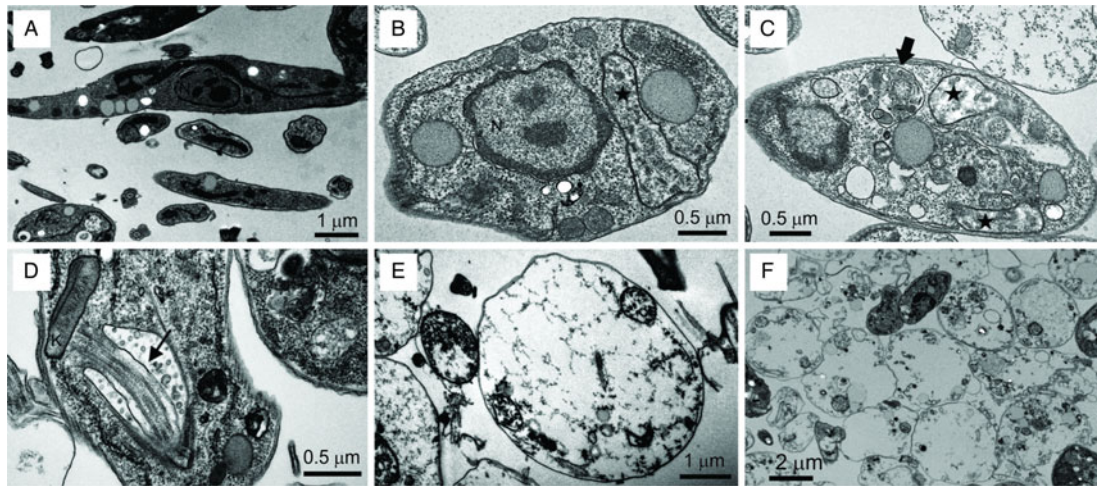
The fluorescent probe PI was used to evaluate the early physiological events related to membrane integrity in promastigotes treated with tamoxifen. Treated and untreated parasites were labelled with PI, which is non-permeant to intact membranes but taken up by cells with damaged membranes. When cells were treated with  $5 \mu\text{M}$  tamoxifen no PI uptake was observed until 75 min of incubation. A dose-dependent membrane rupture effect was seen when  $20$  or  $40 \mu\text{M}$  tamoxifen concentrations were tested with a progressive increase in PI uptake. Drug concentrations of  $10 \mu\text{M}$  resulted in membrane damage only after periods longer than 30 min (Fig. 3). The detergent digitonin was used as a positive control for cell permeabilization and resulted in an immediate significant increase in PI uptake (Fig. 3). These assays were performed with cells incubated in PBS + g, and in these conditions, tamoxifen displays an  $IC_{50}$  of  $11.34 \pm 0.90 \mu\text{M}$  after 2 h treatments. Therefore, these results indicated that some degree of membrane rupture is likely to take place as the time in the presence of drug and/or concentration increases. However, at low concentrations ( $5$ – $10 \mu\text{M}$ ) the plasma membrane remains intact for at least 30–60 min.

### Plasma membrane electric potential

To investigate the effect of tamoxifen on  $\Delta\Psi_p$ , parasites were incubated with DiSBAC<sub>2</sub>(3) and analysed by fluorimetry. DiSBAC<sub>2</sub>(3) is a negatively charged dye that moves into depolarized cells (positively charged) and out of hyperpolarized cells (negatively charged) in response to changes in the membrane potential. Once inside living cells the dye binds to lipids and proteins, causing it to fluoresce brightly. Promastigotes treated with  $5 \mu\text{M}$  of the ionophore valinomycin displayed a sharp increase in fluorescence, indicative of total depolarization (data not shown). We observed that the addition of  $5 \mu\text{M}$  tamoxifen to cells previously loaded with DiSBAC<sub>2</sub>(3) induced a rapid change in fluorescence. After 10 min incubation with tamoxifen, fluorescence had increased 2.3-fold over basal levels, indicating membrane depolarization



**Fig. 1.** Morphology of tamoxifen-treated promastigotes. Photographs obtained by optical microscopy of *Leishmania amazonensis* promastigotes ( $2 \times 10^7 \text{ mL}^{-1}$ ). Untreated control (A); parasites incubated with  $20 \mu\text{M}$  TAM for 30 min (B), 1 h (C); 2 h (D), 3 h (E); 4 h (F); 6 h (G) and 8 h (H).

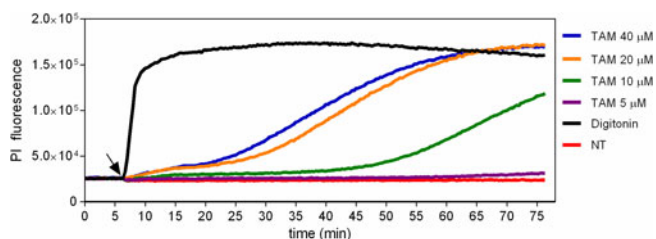


**Fig. 2.** Ultrastructural analysis of tamoxifen-treated promastigotes. *L. amazonensis* promastigotes were left untreated (A) or treated with 20  $\mu\text{M}$  tamoxifen for 2 h (B–D) or 22 h (E and F). Treated parasites presented mitochondrial swelling (stars), the formation of autophagosomes (big arrows) and intense exocytic activity in the flagellar pocket (thin arrow) No disruption of the plasma membrane was observed. N: nucleus; M: mitochondria; K: kinetoplast.

(Fig. 4). Levels of fluorescence attained were indicative of total depolarization, as confirmed by the lack of increase in effect upon further treatment with 5  $\mu\text{M}$  of the ionophore valinomycin. We also observed that tamoxifen caused DiSBAC<sub>2</sub>(3) fluorescence to increase even in the absence of cells (Fig. 4). Concentrations of tamoxifen higher than 5  $\mu\text{M}$  were tested but resulted in greater spurious fluorescence in the presence of DiSBAC<sub>2</sub>(3) (data not shown).

#### Mitochondrial membrane electric potential

To verify whether tamoxifen altered the  $\Delta\Psi_m$  of promastigotes, mitochondrial function was monitored in treated parasites using the fluorescent probe Rh123, a cell-permeant fluorescent dye that is readily sequestered by active mitochondria. Its use relies on the fact that Rh123 accumulates in living cells in a manner that is dependent on mitochondrial membrane polarization. Parasites incubated for 20 min with increasing concentrations of tamoxifen showed a dose-dependent decrease in Rh123 accumulation compared with untreated parasites (Fig. 5). The protonophore FCCP, an uncoupler of oxidative phosphorylation in mitochondria, was used as positive control and caused depolarization of the mitochondrial membrane, with  $64 \pm 14\%$  reduction in Rh123 accumulation (Fig. 5). The loss of mitochondrial function was accompanied by loss of selective permeability to ions such as calcium both at the plasma as well as internal membranes, as shown by the increased concentration of intracellular calcium in treated parasites (Supplementary Figure 1).

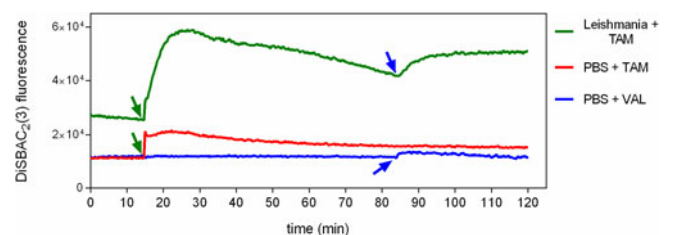


**Fig. 3.** Evaluation of propidium iodide labelling in tamoxifen-treated parasites. *L. amazonensis* promastigotes were loaded with 10  $\mu\text{M}$  PI in PBS + g at 25 °C. Fluorescence was recorded continuously ( $\lambda_{\text{ex}} = 530\text{--}10\text{ nm}$ ;  $\lambda_{\text{em}} = 620\text{ nm}$ ) and 5, 10, 20 or 40  $\mu\text{M}$  tamoxifen (TAM) or 25  $\mu\text{M}$  digitonin were added to the wells at the time indicated by the arrow. Traces are from one experiment representative of three independent experiments. Untreated parasites (NT) were used as negative control.

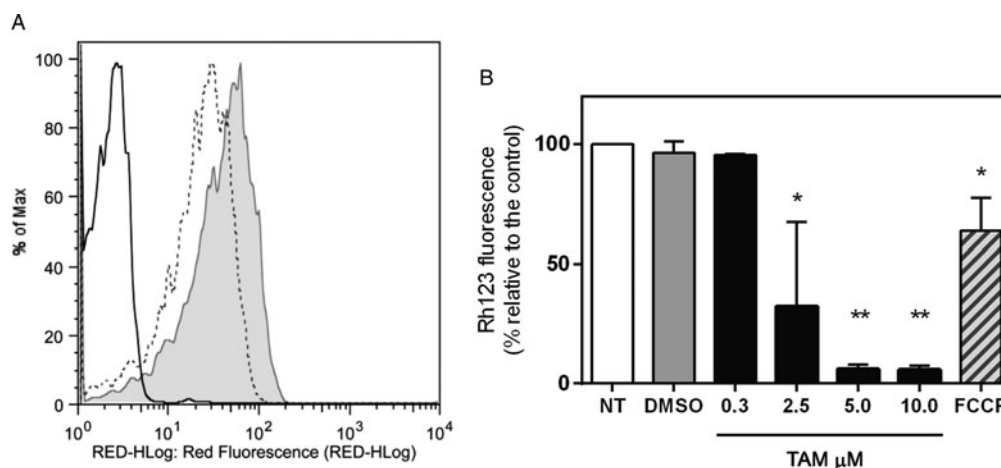
#### Discussion

Tamoxifen has been suggested as a drug candidate for leishmaniasis treatment based on previously reported *in vitro* activity against a panel of *Leishmania* species and *in vivo* efficacy against infected animals (Miguel *et al.* 2008; 2009; Eissa *et al.* 2011). Aiming to explore the mechanism responsible for the antileishmanial activity of tamoxifen, we investigated in the present work its effect on membranes of *L. amazonensis* promastigotes. Tamoxifen has been shown to be strongly incorporated into biomembranes, to disrupt membrane structure and to induce mitochondrial permeabilization (Custodio *et al.* 1998), characteristics that can be correlated with its high hydrophobicity (LogP = 5.93) and are oestrogen receptor-independent.

Membrane integrity can be evaluated through the binding of PI to nucleic acids, while more subtle membrane lesions can be monitored using another fluorescent probe, DiSBAC<sub>2</sub>(3), which enters depolarized cells, resulting in increased fluorescence. The results obtained indicated that tamoxifen caused a remarkable dissipation of plasmatic membrane potential in the first minutes of incubation. At these early time points and low concentrations, tamoxifen does not disrupt *L. amazonensis* membrane integrity, as observed microscopically. The observed depolarization appears to be an effect of the collapse of ionic gradients across the membrane. The loss of  $\Delta\Psi_p$  is due to the passage of ions and small molecules, resulting in equilibration of ions between intracellular and extracellular space. This early effect on parasite's membrane



**Fig. 4.** Effect of tamoxifen on plasma membrane potential. *L. amazonensis* promastigotes were equilibrated with 0.2 mM DiSBAC<sub>2</sub>(3) in PBS + g at 25 °C. Fluorescence was recorded continuously ( $\lambda_{\text{ex}} = 544\text{ nm}$ ;  $\lambda_{\text{em}} = 584\text{ nm}$ ) and tamoxifen 5  $\mu\text{M}$  (TAM, green arrows) or valinomycin 5  $\mu\text{M}$  (VAL, blue arrows) were added to the wells at the time indicated by the arrows. Traces are from one experiment representative of three independent experiments. The green trace shows the fluorescence in the presence of *L. amazonensis* promastigotes, while the red and the blue traces show the fluorescence in the absence of parasites.



**Fig. 5.** Tamoxifen interference in *Leishmania* mitochondrial membrane potential. *L. amazonensis* promastigotes pre-incubated for 20 min with tamoxifen (TAM) in concentrations ranging from 0.3 to 10  $\mu\text{M}$  were loaded with 0.3  $\mu\text{g mL}^{-1}$  Rh123, and the fluorescence level was measured by flow cytometry. Parasites treated with 50  $\mu\text{M}$  FCCP were used as positive control. Untreated parasites (NT) and parasites incubated with the highest volume of vehicle (DMSO) were used as negative controls. (A) Fluorescence histograms are representative of three independent experiments with untreated parasites (grey filled), 10  $\mu\text{M}$  tamoxifen (black line), and 50  $\mu\text{M}$  FCCP (dashed line). (B) Values shown are the mean  $\pm$  standard deviation of at least three independent experiments. Asterisks indicate significant difference relative to the untreated group (\* $P < 0.001$ ; \*\* $P < 0.0001$ ).

could trigger a series of events that would lead to parasite death. The entry of ions into the cytoplasm driven by electrochemical gradients affects the  $\Delta\Psi_m$ , which is critical for maintaining the physiological function of the respiratory chain to generate ATP. A significant loss of  $\Delta\Psi_m$  renders cells depleted of energy with subsequent death. The presented results indicated that tamoxifen causes loss of  $\Delta\Psi_m$  in a dose-dependent manner and similar results were reported for raloxifene in *L. amazonensis* promastigotes (Reimao *et al.* 2014).

Therefore, we have shown that tamoxifen induces alterations in plasma membrane potential, with no disruption of its integrity. Tamoxifen also interacts with parasites' mitochondria, leading to depolarization of its membrane, which results in mitochondrial dysfunction.

### Supplementary material

The supplementary material for this article can be found at <https://doi.org/10.1017/pao.2018.3>.

**Acknowledgements.** We are grateful to Jenicer K. U. Yokoyama-Yasunaka for technical assistance, Dr. Cristiana T. Trinconi for help with experimental procedures, Dr. Antonio Carlos Cassola for helpful discussions, Dr. Noemi Nosomi Taniwaki for assistance with the transmission electron microscopy and Dr. Beatriz S. Stolf for the critical reading of the manuscript.

**Financial support.** This work was supported by Fundação de Amparo à Pesquisa do Estado de São Paulo (FAPESP 2011/20484-7 and 2015/09080-2) and Conselho Nacional de Desenvolvimento Científico e Tecnológico (CNPq 473343/2012-6). We thank the FAPESP scholarship given to JQR (2011/21970-2). SRBU is the recipient of a senior researcher scholarship from CNPq.

### References

- Alvar J, Velez ID, Bern C, Herrero M, Desjeux P, Cano J, Jannin J and den Boer M (2012) Leishmaniasis worldwide and global estimates of its incidence. *PLoS ONE* **7**, e35671.
- Berman JD, Goad LJ, Beach DH and Holz Jr. GG (1986) Effects of ketoconazole on sterol biosynthesis by *Leishmania mexicana mexicana* amastigotes in murine macrophage tumor cells. *Molecular and Biochemical Parasitology* **20**, 85–92.
- Cabot MC, Giuliano AE, Volner A and Han TY (1996) Tamoxifen retards glycosphingolipid metabolism in human cancer cells. *FEBS Letters* **394**, 129–131.

- Clarke R, van den Berg HW and Murphy RF (1990) Reduction of the membrane fluidity of human breast cancer cells by tamoxifen and 17 beta-estradiol. *Journal of the National Cancer Institute* **82**, 1702–1705.
- Custodio JB, Moreno AJ and Wallace KB (1998) Tamoxifen inhibits induction of the mitochondrial permeability transition by  $\text{Ca}^{2+}$  and inorganic phosphate. *Toxicology and Applied Pharmacology* **152**, 10–17.
- den Boer M, Argaw D, Jannin J and Alvar J (2011) Leishmaniasis impact and treatment access. *Clinical Microbiology and Infection* **17**, 1471–1477.
- Eissa MM, Amer EI and El Sawy SM (2011) *Leishmania major*: activity of tamoxifen against experimental cutaneous leishmaniasis. *Experimental Parasitology* **128**, 382–390.
- Goad LJ, Holz Jr. GG and Beach DH (1985) Sterols of ketoconazole-inhibited *Leishmania mexicana mexicana* promastigotes. *Molecular and Biochemical Parasitology* **15**, 257–79.
- Jordan C (2002) Historical perspective on hormonal therapy of advanced breast cancer. *Clinical Therapy* **24** (Suppl. A), A3–16.
- Jordan VC (1984) Biochemical pharmacology of antiestrogen action. *Pharmacological Reviews* **36**, 245–276.
- Khadka NK, Cheng X, Ho CS, Katsaras J and Pan J (2015) Interactions of the anticancer drug tamoxifen with lipid membranes. *Biophysical Journal* **108**, 2492–2501.
- Luque-Ortega JR and Rivas L (2010) Characterization of the leishmanicidal activity of antimicrobial peptides. *Methods Molecular Biology* **618**, 393–420.
- Mandlekar S and Kong AN (2001) Mechanisms of tamoxifen-induced apoptosis. *Apoptosis* **6**, 469–477.
- Miguel DC, Yokoyama-Yasunaka JK, Andreoli WK, Mortara RA and Uliana SR (2007) Tamoxifen is effective against *Leishmania* and induces a rapid alkalization of parasitophorous vacuoles harbouring *Leishmania (Leishmania) amazonensis* amastigotes. *Journal of Antimicrobial Chemotherapy* **60**, 526–34.
- Miguel DC, Yokoyama-Yasunaka JK and Uliana SR (2008) Tamoxifen is effective in the treatment of *Leishmania amazonensis* infections in mice. *PLoS Neglected Tropical Diseases* **2**, e249.
- Miguel DC, Zauli-Nascimento RC, Yokoyama-Yasunaka JK, Katz S, Barbieri CL and Uliana SR (2009) Tamoxifen as a potential antileishmanial agent: efficacy in the treatment of *Leishmania braziliensis* and *Leishmania chagasi* infections. *Journal of Antimicrobial Chemotherapy* **63**, 365–368.
- O'Brian CA, Ioannides CG, Ward NE and Liskamp RM (1990) Inhibition of protein kinase C and calmodulin by the geometric isomers cis- and trans-tamoxifen. *Biopolymers* **29**, 97–104.
- Rama M, Kumar NV and Balaji S (2015) A comprehensive review of patented antileishmanial agents. *Pharmaceutical Patent Analyst* **4**, 37–56.
- Reimao JQ, Miguel DC, Taniwaki NN, Trinconi CT, Yokoyama-Yasunaka JK and Uliana SR (2014) Antileishmanial activity of the estrogen receptor modulator raloxifene. *PLoS Neglected Tropical Diseases* **8**, e2842.
- Severcan F, Kazanci N and Zorlu F (2000) Tamoxifen increases membrane fluidity at high concentrations. *Bioscience Reports* **20**, 177–184.

- Tsuda K and Nishio I** (2005) A selective estrogen receptor modulator, tamoxifen, and membrane fluidity of erythrocytes in normotensive and hypertensive postmenopausal women: an electron paramagnetic resonance investigation. *American Journal of Hypertension* **18**, 1067–1076.
- Wiseman H, Cannon M, Arnstein HR and Halliwell B** (1990) Mechanism of inhibition of lipid peroxidation by tamoxifen and 4-hydroxytamoxifen introduced into liposomes. Similarity to cholesterol and ergosterol. *FEBS Letters* **274**, 107–110.
- Wiseman H, Quinn P and Halliwell B** (1993) Tamoxifen and related compounds decrease membrane fluidity in liposomes. Mechanism for the antioxidant action of tamoxifen and relevance to its anticancer and cardio-protective actions? *FEBS Letters* **330**, 53–56.