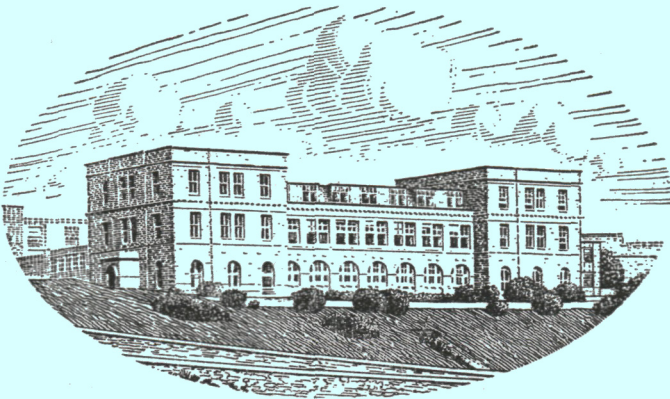


JOURNAL OF THE  
MARINE BIOLOGICAL ASSOCIATION  
OF THE UNITED KINGDOM



THE PLYMOUTH LABORATORY

VOLUME 50, No. 4  
*(issued November 1970, and completing Volume 50)*

CAMBRIDGE  
AT THE UNIVERSITY PRESS  
1970

*Price £5 net*

*(U.S.A. \$16.50)*

*Annual Subscription for Volume (of four parts): £18 net (U.S.A. \$60.00)*

# THE MARINE BIOLOGICAL ASSOCIATION OF THE UNITED KINGDOM

## PATRON

H.R.H. THE PRINCE PHILIP DUKE OF EDINBURGH, F.R.S.

## OFFICERS AND COUNCIL

*President:* Prof. A. L. HODGKIN, Sc.D., F.R.S.

### *Vice-Presidents*

Prof. A. V. HILL, C.H., O.B.E., Sc.D., LL.D.,  
F.R.S.

Sir EDWARD J. SALISBURY, Kt., C.B.E., D.Sc.,  
LL.D., F.R.S.

Prof. Sir JAMES GRAY, Kt., C.B.E., M.C., Sc.D.,  
LL.D., F.R.S.

G. M. GRAHAM, C.M.G., O.B.E.

Prof. Sir ALISTER C. HARDY, Kt., D.Sc., F.R.S.

Sir C. MAURICE YONGE, Kt., C.B.E., D.Sc., F.R.S.

Rear Admiral Sir EDMUND G. IRVING, K.B.E., C.B.

Sir FREDERICK S. RUSSELL, Kt., C.B.E., D.S.C.,  
D.F.C., D.Sc., LL.D., F.R.S.

Sir EDWARD R. CHADWYCK-HEALEY, Bt., M.C.

### *Honorary Members*

Prof. Sir JAMES GRAY, Kt., C.B.E., M.C., Sc.D.,  
LL.D., F.R.S.

Prof. Sir ALISTER C. HARDY, Kt., D.Sc., F.R.S.

E. H. E. HAVELOCK, C.B., C.B.E.

Dr A. G. HUNTSMAN

Miss MARIE V. LEBOUR, D.Sc.

Dr A. C. REDFIELD

Prof. G. THORSON, D.Phil.

Sir C. MAURICE YONGE, Kt., C.B.E., D.Sc., F.R.S.

## COUNCIL

### **Elected Members**

Prof. H. CHARNOCK

Prof. D. J. CRISP, Sc.D., F.R.S.

G. E. R. DEACON, C.B.E., D.Sc., F.R.S.

Prof. G. E. FOGG, Sc.D., F.R.S.

J. A. B. GRAY, M.B., Sc.D.

Prof. G. M. HUGHES, Sc.D.

Rear Admiral Sir EDMUND G. IRVING, K.B.E.,  
C.B.

N. B. MARSHALL, Sc.D., F.R.S.

Prof. R. A. MORTON, D.Sc., F.R.I.C., F.R.S.

Prof. D. NICHOLS, D.Phil.

Rear Admiral G. S. RITCHIE, C.B., D.Sc., F.R.I.C.S.

Prof. T. I. SHAW, Ph.D.

J. C. SWALLOW, Ph.D., F.R.S.

H. G. VEVERS, M.B.E., D.Phil.

### **Governors**

J. GRAHAM (Ministry of Agriculture, Fisheries  
and Food)

The Worshipful Company of Fishmongers:

Sir EDWARD R. CHADWYCK-HEALEY, Bt., M.C.

Col. Sir JOHN G. CAREW POLE, Bt., D.S.O., T.D.

The Hon. HUGH WALDORF ASTOR, J.P.

Prof. J. W. S. PRINGLE, M.B.E., Sc.D., F.R.S.  
(Oxford University)

S. SMITH, Ph.D. (Cambridge University)

EDWARD HINDLE, Sc.D., F.R.S. (British  
Association)

Prof. G. P. WELLS, Sc.D., F.R.S. (Zoological Society)

Prof. Sir BERNARD KATZ, Kt., M.D., D.Sc., F.R.S.  
(Royal Society)

Prof. E. J. DENTON, Sc.D., F.R.S. (Physiological  
Society)

*Hon. Treasurer:* The Hon. HUGH WALDORF ASTOR, J. P., 14 Culross Street, London, W. 1.

*Secretary:* J. E. SMITH, Sc.D., F.R.S., The Laboratory, Citadel Hill, Plymouth, Devon

## SCIENTIFIC STAFF

*Director:* J. E. SMITH, Sc.D., D.Sc., F.I.Biol., F.R.S.

L. H. N. COOPER, D.Sc., F.R.I.C., F.G.S., F.I.Biol.,  
F.R.S. (*Chemist*)

G. M. SPOONER, M.B.E., M.A., F.R.E.S. (*Zoologist*)

MARY W. PARKE, D.Sc., Ph.D., F.L.S., F.I.Biol.  
(*Phycologist*)

P. G. CORBIN, B.A. (*Zoologist*)

N. A. HOLME, M.A. (*Zoologist*)

G. R. FORSTER, B.Sc. (*Zoologist*)

E. D. S. CORNER, M.Sc., Ph.D. (*Biochemist*)

A. J. SOUTHWARD, D.Sc., Ph.D. (*Zoologist*)

J. V. HOWARTH, B.Sc. (*Physiologist*)

Q. BONE, M.A., D.Phil. (*Zoologist*)

G. T. BOALCH, B.Sc., Ph.D. (*Phycologist*)

G. W. BRYAN, B.Sc., Ph.D. (*Zoologist*)

A. G. DAVIES, B.Sc., Ph.D. (*Physical Chemist*)

P. R. DANDO, B.Sc., Ph.D. (*Biochemist*)

P. E. GIBBS, B.Sc., M.A., Ph.D. (*Zoologist*)

B. L. ROBERTS, M.A., Ph.D. (*Physiologist*)

J. C. GREEN, Ph.D. (*Phycologist*)

D. K. GRIFFITHS, M.Sc. (*Physical Oceanographer*)

G. W. POTTS, B.Sc., Ph.D. (*Zoologist*)

J. B. GILPIN-BROWN, B.Sc., Ph.D. (*Zoologist*)

J. H. WICKSTEAD, D.Sc., Ph.D., F.I.Biol., Ministry of Overseas Development (*Zoologist*)

Prof. E. J. DENTON, Sc.D., F.I.Biol., F.R.S. (*Physiologist*),

Royal Society Research Professor of Bristol University

MOLLY F. SPOONER, Ph.D. (*Special Appointment*)