








Marangoni-driven patterns, ridges and hills in surfactant-covered parametric surface waves

Debashis Panda¹ , Lyes Kahouadji¹ , Laurette S. Tuckerman² ,
Seungwon Shin³ , Jalel Chergui⁴, Damir Juric^{4,5}  and Omar K. Matar¹ 

¹Department of Chemical Engineering, Imperial College London, London SW7 2AZ, UK

²Physique et Mécanique des Milieux Hétérogènes, CNRS, ESPCI Paris, Université PSL, Sorbonne Université, Université de Paris, 75005 Paris, France

³Department of Mechanical and System Design Engineering, Hongik University, Seoul 04066, Republic of Korea

⁴Université Paris Saclay, Centre National de la Recherche Scientifique (CNRS), Laboratoire Interdisciplinaire des Sciences du Numérique (LISN), 91400 Orsay, France

⁵Department of Applied Mathematics and Theoretical Physics, University of Cambridge, Cambridge, CB3 0WA, UK

Corresponding author: Omar K. Matar, o.matar@imperial.ac.uk

(Received 13 January 2025; revised 21 February 2025; accepted 21 February 2025)

Parametric oscillations of an interface separating two fluid phases create nonlinear surface waves, called Faraday waves, which organise into simple patterns, such as squares and hexagons, as well as complex structures, such as double hexagonal and superlattice patterns. In this work, we study the influence of surfactant-induced Marangoni stresses on the formation and transition of Faraday-wave patterns. We use a control parameter, B , that assesses the relative importance of Marangoni stresses as compared with the surface-wave dynamics. Our results show that the threshold acceleration required to destabilise a surfactant-covered interface through vibration increases with increasing B . For a surfactant-free interface, a square-wave pattern is observed. As B is incremented, we report transitions from squares to asymmetric squares, weakly wavy stripes and ultimately to ridges and hills. These hills are a consequence of the bidirectional Marangoni stresses at the neck of the ridges. The mechanisms underlying the pattern transitions and the formation of exotic ridges and hills are discussed.

Key words: parametric instability, pattern formation, Faraday waves

1. Introduction

The use of ‘Storm oil’ to calm ocean waves was widely practised by Roman sailors as reported by Franklin *et al.* (1774) and Lohse (2023). Aitken (1884) described how nearly insoluble oil spilled onto water can act as surfactant that calms stormy seas in Aberdeen Harbour. Inspired by such observations, this work focuses on surfactant-covered parametric gravity-capillary standing waves, known as Faraday waves.

Faraday (1831) noticed that vertically vibrating a fluid layer produces surface waves oscillating at half the driving frequency. Crossing a threshold amplitude, these waves usually organise into patterns such as squares, hexagons and triangles (Westra *et al.* 2003). Complications arise from factors such as contact line dissipation and surface contamination. In this work, we focus on the effects of surface contamination on the Faraday-wave patterns.

Henderson (1998) found that the measured damping rates with insoluble surfactants agreed with the damping constants of elastic interfacial films (Miles 1967). Kumar & Matar (2002) presented a linear stability theory for surfactant-covered Faraday waves in the lubrication approximation. Subsequent research (Kumar & Matar 2004) emphasised the role of the phase difference that influences the Marangoni stresses. Depending on the phase difference, the Marangoni stresses may oppose (in phase) or support (out of phase) the fluid flow. Ubal *et al.* (2005*a,b*) computed the two-dimensional numerical simulations of surfactant-covered Faraday waves. However, these studies are limited to linearised one- or two-dimensional models, with some being carried out using lubrication theory. Strickland *et al.* (2015) conducted experiments to investigate the spatiotemporal evolution of the surfactant-covered Faraday waves in a cylindrical container of 10 wavelengths in diameter. Due to the confined region of interest, they observed the combined effects of meniscus and Faraday waves. As a result, the formation of patterns such as squares and hexagons was suppressed because of the superposition of these waves. In a related study, Lau *et al.* (2020) used surfactant-covered Faraday waves to measure ultralow interfacial tension between two immiscible fluids (water-dodecane system). They found that the predicted wavelength from linear stability analysis is two orders of magnitude higher than the experiments, which shows that the Marangoni stresses are crucial in surfactant-covered interfacial waves. Despite this, Lau *et al.* (2020) obtained square patterns in a surfactant-covered system. No further studies have been conducted on pattern formation in surfactant-covered Faraday waves.

Périnet *et al.* (2009) were the first to perform full three-dimensional direct numerical simulations for the study of Faraday waves. Kahouadji *et al.* (2015) further exploited the highly parallelised front tracking code, BLUE (Shin *et al.* 2017), to find supersquare patterns. Ebo-Adou *et al.* (2019) employed BLUE to study Faraday waves on a sphere. Recently, Panda *et al.* (2023, 2024) used the same code for studying surface waves on a water drop. Shin *et al.* (2018) further extended BLUE by including modules to solve surfactant dynamics on the interface as well as in the bulk medium.

In this work, we report the results of simulations of three-dimensional surfactant-covered Faraday waves; we focus on the influence of Marangoni effects on the surface-wave patterns. Our study reveals that the dominance of Marangoni flow leads to transitions away from the square patterns to asymmetric squares, weakly wavy stripes, and ridges and hills. These ridges and hills are new features that occurred on a highly elastic surface. Ridges are found to rise non-uniformly and fall by forming a hill. Our direct numerical simulations help to uncover the rich physics of the dynamics of these newly observed ridges and hills.

This paper is organised as follows. First, we briefly present the problem, scaling and the numerical method. We then present the numerical threshold acceleration which is

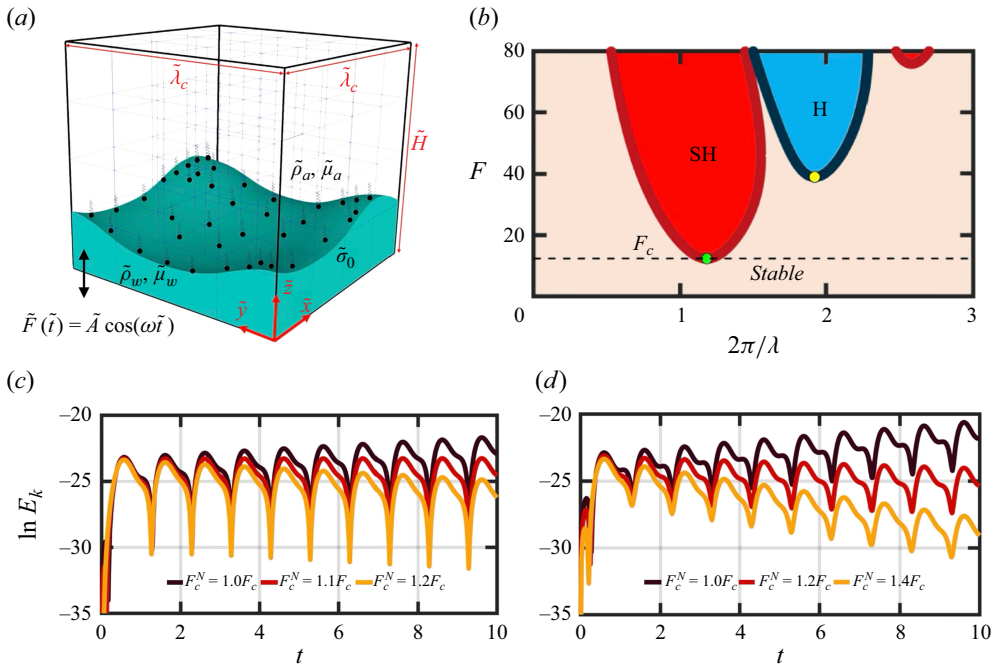


Figure 1. (a) Schematic representation of the computational domain: the height of the domain $\tilde{H} = 5.00$ mm, and the lateral dimensions $\tilde{\lambda}_c \times \tilde{\lambda}_c$, where $\tilde{\lambda}_c$ is the critical wavelength. No-penetration and no-slip boundary conditions are applied at the bottom and top of the domain and periodic boundaries on the sides. Here, \tilde{F} is the oscillatory driving acceleration, \tilde{A} is the acceleration amplitude, and ω is the angular frequency. (b) Critical acceleration F_c for a surfactant-free interface where the solid lines represent the neutral curves for the hydrodynamic parameters listed in Ubal *et al.* (2005b) and the present work, evaluated using the method of Kumar & Tuckerman (1994). Here ‘SH’ and ‘H’ refer to the subharmonic and harmonic tongues. (c,d) Temporal evolution of the total kinetic energy E_k for a (c) surfactant-free and (d) surfactant-covered ($\beta_s = 1.0$, $\Gamma_0 = 0.2$) interface at different acceleration amplitudes F . The wavelength in both cases is the critical wavelength $\lambda_c = 5.3023$ mm for the surfactant-free case.

validated by comparison with the two-dimensional simulations of Ubal *et al.* (2005b). After that, we present a phase diagram that highlights the influence of Marangoni stresses in the pattern transition of surfactant-covered Faraday waves. These patterns are analysed spectrally. Finally, we explain the newly observed ridges and hills in detail.

2. Problem formulation, non-dimensionalisation and numerical method

Our computational domain is shown in figure 1(a), which contains a layer of heavy fluid overlaid by light fluid under the gravitational acceleration, g . We choose a simulation set-up and hydrodynamic parameters based on Ubal *et al.* (2005b), where the lower heavy fluid is a water–glycerine mixture of depth $\tilde{h} = 1$ mm, density $\tilde{\rho}_w = 1000 \text{ kg m}^{-3}$ and viscosity $\tilde{\mu}_w = 0.025 \text{ kg m}^{-1} \text{ s}^{-1}$. Unlike Ubal *et al.* (2005b), we include an upper air layer of height 4 mm, density $\tilde{\rho}_a = 1.206 \text{ kg m}^{-3}$ and viscosity $\tilde{\mu}_a = 1.82 \times 10^{-5} \text{ kg m}^{-1} \text{ s}^{-1}$. The surface tension of the liquid–gas surfactant-free interface is $\tilde{\sigma}_0 = 70 \times 10^{-3} \text{ kg s}^{-2}$. Due to the low density ratio (10^{-3}) and capillary length $l_c = \sqrt{\tilde{\sigma}_0 / ((\tilde{\rho}_w - \tilde{\rho}_a)g)} = 2.67$ mm being smaller than the air layer height, the upper fluid minimally influences the Faraday instability, allowing comparison with Ubal *et al.* (2005b). The frequency of the external vibration is 100 Hz (angular frequency $\omega = 2\pi \cdot 100 \text{ rad s}^{-1}$).

We consider an insoluble surfactant that is present only on the interface since we consider that the time scale of surfactant desorption from the interface into the bulk is larger than the vibratory time scale. The saturated surfactant concentration at the critical micelle concentration is $\tilde{\Gamma}_\infty \sim O(10^{-6}) \text{ mol m}^{-2}$; the range of surfactant elasticity parameter β_s (whose definition is discussed in the following section) is $0.1 < \beta_s < 0.9$. The diffusivity for the surfactant \mathcal{D} is set to $2.5 \times 10^{-9} \text{ m}^2 \text{ s}^{-1}$ to align with the work of Ubal *et al.* (2005*a,b*). Unless otherwise specified, we set the initial surfactant coverage to $\tilde{\Gamma}_0 = 0.5\tilde{\Gamma}_\infty$.

We list the major time scales in the problem: (i) the capillary time scale $\Delta\tilde{t}_c = (\tilde{\rho}_w\tilde{h}^3/\tilde{\sigma}_0)^{1/2}$ of natural capillary oscillations of the perturbed planar interface; (ii) the imposed vibrational time scale $\Delta\tilde{t}_i = 1/\omega$; and (iii) the Marangoni time scale $\Delta\tilde{t}_m = \tilde{\mu}_w\tilde{h}/(\tilde{\sigma}_0 - \tilde{\sigma}(\tilde{\Gamma}_0))$, where $\tilde{\sigma}$ denotes the surface tension of a surfactant-laden interface, which quantifies the surfactant dynamics on the interface. Our choice of parameters leads to $\Delta\tilde{t}_c \sim O(10^{-3}) \text{ s}$, $\Delta\tilde{t}_i \sim O(10^{-3}) \text{ s}$ and $\Delta\tilde{t}_m \sim O(10^{-4} - 10^{-3}) \text{ s}$. This choice ensures that we observe a competition between the vibrational, capillary and Marangoni effects.

We choose the height of the liquid \tilde{h} as the length scale, the inverse angular frequency $1/\omega$ as the time scale, and $\tilde{\rho}_w\omega^2\tilde{h}^2$ as the pressure scale. Finally, the interfacial concentration $\tilde{\Gamma}$ is scaled by the saturated interfacial concentration $\tilde{\Gamma}_\infty$. The dimensionless hydrodynamic equations are then written as

$$\nabla \cdot \mathbf{u} = 0, \tag{2.1}$$

$$\begin{aligned} \rho \left(\frac{\partial \mathbf{u}}{\partial t} + \mathbf{u} \cdot \nabla \mathbf{u} \right) = & -\nabla p - \frac{\rho}{Fr^2} (1 - F \cos t) \mathbf{i}_z + \frac{1}{Re} \nabla \cdot \left[\mu (\nabla \mathbf{u} + \nabla \mathbf{u}^T) \right] \\ & + \frac{1}{We} \int_{\mathcal{A}(t)} (\sigma \kappa \mathbf{n} + \nabla_s \sigma) \delta(\mathbf{x} - \mathbf{x}_f) d\mathcal{A}. \end{aligned} \tag{2.2}$$

Here, the dimensionless density and dynamic viscosity are given by

$$\rho = \tilde{\rho}_a/\tilde{\rho}_w + (1 - \tilde{\rho}_a/\tilde{\rho}_w)\mathcal{H}(\tilde{\mathbf{x}}, \tilde{t}), \quad \mu = \tilde{\mu}_a/\tilde{\mu}_w + (1 - \tilde{\mu}_a/\tilde{\mu}_w)\mathcal{H}(\tilde{\mathbf{x}}, \tilde{t}), \tag{2.3}$$

where $\mathcal{H}(\tilde{\mathbf{x}}, \tilde{t})$ is the Heaviside function, which is set to 0 for air (subscript *a*) and 1 for water (subscript *w*). The last term on the right-hand side of (2.2) corresponds to the surface force at the interface $\mathbf{x} = \mathbf{x}_f$ and \mathbf{n} is the vector normal to the interface. Inside the integral, the first and second terms account for forces arising from the normal and tangential stresses; the latter are the Marangoni stresses induced by the presence of surface tension gradients. Here $\mathcal{A}(t)$ denotes the dimensionless time-dependent interfacial area. The interfacial concentration Γ evolves according to

$$\frac{\partial \Gamma}{\partial t} + \nabla_s \cdot (\Gamma \mathbf{u}_s) = \frac{1}{Pe} \nabla_s^2 \Gamma, \tag{2.4}$$

where \mathbf{u}_s is the surface velocity, ∇_s ($\nabla_s \cdot$) is the gradient (divergence) in the plane locally tangent to the interface. As justified by Stone (1990) and used by Muradoglu & Tryggvason (2008) and Shin *et al.* (2018), in the Lagrangian frame of reference the velocity satisfies $\mathbf{u} \cdot \mathbf{n} = 0$, which gives rise to (2.4). The dimensionless parameters in (2.2) and (2.4) are the Reynolds, Weber, Péclet and Froude numbers, and the ratio of imposed acceleration \tilde{A} to gravitational acceleration g :

$$Re = \frac{\omega \tilde{\rho}_w \tilde{h}^2}{\tilde{\mu}_w}, \quad We = \frac{\omega^2 \tilde{\rho}_w \tilde{h}^3}{\tilde{\sigma}_0}, \quad Pe = \frac{\omega \tilde{h}^2}{\mathcal{D}}, \quad Fr = \omega \sqrt{\frac{\tilde{h}}{g}}, \quad F = \frac{\tilde{A}}{g}. \tag{2.5}$$

The surfactant dynamics is coupled with the hydrodynamics through the nonlinear Langmuir equation of state given by

$$\sigma = \max [0.05, 1 + \beta_s \ln (1 - \Gamma)], \quad \beta_s \equiv \frac{\mathcal{R}\tilde{T}\tilde{\Gamma}_\infty}{\tilde{\sigma}_0}, \quad (2.6)$$

where β_s is the surfactant elasticity number measuring the sensitivity of the surface tension to the surfactant concentration and where the lower limit of σ has been set to 0.05, below which the Langmuir equation of state may diverge. Here, \tilde{T} is the temperature and \mathcal{R} is the universal gas constant.

The interplay between the surfactant-dependent elastic interface, capillary forces and vibratory inertial forces are captured by β_s and We . Scaling the stresses by vibratory inertial stress ($\tilde{\rho}_w \omega^2 \tilde{h}^2$) and surface tension by the surfactant-free surface tension ($\tilde{\sigma}_0$), we obtain the Marangoni stress, τ , along the tangent \mathbf{t} to the interface:

$$\tau \equiv \frac{1}{We} \nabla_s \sigma \cdot \mathbf{t} = - \frac{Ma}{(1 - \Gamma)} \nabla_s \Gamma \cdot \mathbf{t}, \quad (2.7)$$

where $Ma = \beta_s / We$ is the Marangoni number. Here Ma describes the competition between the surfactant-dependent surface elastic forces and the vibratory inertial forces. Rescaling the surface tension by the difference between the surfactant-free and surfactant-covered surface tension ($\tilde{\sigma}(\tilde{\Gamma}_0) + \sigma(\tilde{\sigma}_0 - \tilde{\sigma}(\tilde{\Gamma}_0))$) and stresses by the viscous stresses ($\tilde{\mu}_w \omega$), we obtain a dimensionless parameter B , given by,

$$B \equiv \frac{\tilde{\sigma}_0 - \tilde{\sigma}(\tilde{\Gamma}_0)}{\omega \tilde{\mu}_w \tilde{h}} = - \frac{\tilde{\sigma}_0 \beta_s \ln (1 - \tilde{\Gamma}_0 / \tilde{\Gamma}_\infty)}{\omega \tilde{\mu}_w \tilde{h}}. \quad (2.8)$$

Kumar & Matar (2004) refer to B as the Marangoni number. Because B , unlike Ma , includes the surface tension gradient forces, as well as the vibratory inertial and viscous forces, we will use B as a control parameter in the remainder of the paper.

We refer to Shin *et al.* (2017, 2018) for an exhaustive description of the numerical implementation, parallelisation and validation of the numerical framework which we briefly outline here. The spatial derivatives on the Eulerian grid are calculated using a standard cell-centred scheme, except for the nonlinear convective term for which we implemented an essentially non-oscillatory (ENO) procedure on a staggered grid. Peskin's immersed boundary method is used to couple the Eulerian and the Lagrangian grids. The advection of the Lagrangian field $\mathbf{x}_f(t + \Delta t) = \int_t^{t+\Delta t} \mathbf{u}_f(t) dt$, where $\mathbf{u}_f(t)$ is the interpolated velocity at the interface at time t , is accomplished by second-order Runge–Kutta numerical integration. A resolution of $\Delta x = \Delta y = \lambda_c / 44$ was found to be necessary to capture the Faraday-wave dynamics in Périnet *et al.* (2009) and Kahouadji *et al.* (2015). We choose a finer resolution of $\lambda_c / 128$ to capture the coupling with the surfactant dynamics. Adaptive time stepping is used, where the time step is restricted by the surfactant diffusion, advection, capillary, viscous and vibratory numerical time-step criteria. More details can be found in Kahouadji *et al.* (2015) and Muradoglu & Tryggvason (2008).

3. Results and discussion

We begin by computing the Faraday-wave threshold on the surfactant-free (clean) surface using the method for linear stability analysis detailed in Kumar & Tuckerman (1994). We determined that the critical acceleration amplitude F_c and wavelength λ_c are 12.34 and 5.3023, respectively (see figure 1*b*). We can also compute a threshold from our nonlinear

β_s	Γ_0	B	Present work (F_c^N)	F_c^{Ubal}	δ^{Ubal} (%)	Δ (%)
Clean	0	0	12.32	12.30	0.16	0.16
1.0	0.1	0.44	13.09	13.00	0.69	6.07
1.0	0.2	0.89	15.45	15.50	0.32	25.2
1.0	0.3	1.33	18.47	18.51	0.21	49.7

Table 1. Numerical threshold acceleration $F_c^N(B)$ for surfactant-free and surfactant-covered interfaces for varying initial surfactant coverage Γ_0 and elasticity number β_s and a fixed wavelength $\lambda_c = 5.3023$. The surfactant-free critical acceleration $F_c = 12.34$ is obtained by using the linear stability method of Kumar & Tuckerman (1994). The table demonstrates the agreement of our thresholds with those of Ubal *et al.* (2005b) via $\delta^{\text{Ubal}}(B) \equiv |F_c^N(B) - F_c^{\text{Ubal}}(B)|/F_c^N(B)$. The last column presents the increase in the Faraday threshold due to surfactant coverage via $\Delta \equiv (F_c^N(B) - F_c)/F_c$.

numerical simulations by computing the initial growth rates of the total kinetic energy E_k for several values of F near F_c . Since the growth rate varies linearly with the acceleration near the threshold, we can compute the threshold F_c^N by linear interpolation. Furthermore, since our focus is on evaluating the growth rate, we selected a lateral surface area of $\lambda_c \times \lambda_c$. For a surfactant-free interface, we considered three acceleration amplitudes $F = (0.9, 1, 1.1)F_c$, as shown in figure 1(b). Interpolation to zero growth rate yields $F_c^N = 12.32$, which differs by only 0.16 % from the theoretical F_c , as shown in the first line of table 1.

A theoretical linear stability analysis such as that of Kumar & Tuckerman (1994) for a surfactant-covered interface would require linearising the Langmuir equation of state (Kumar & Matar 2002, 2004), a task that has not yet been carried out. However, we can compute the acceleration of the numerical threshold $F_c^N(B)$ using the procedure described earlier. We compute growth rates from numerical simulations with surfactant-covered $\beta_s = 1$ interfaces for different initial surfactant coverage Γ_0 (and corresponding values of B). Although the critical wavelength varies with the elasticity number (Kumar & Matar 2004), we approximate it by its surfactant-free value. The resulting thresholds F_c^N are displayed in the next three rows of table 1. The same computations were carried out by Ubal *et al.* (2005a) and Ubal *et al.* (2005b) using a two-dimensional finite-element technique. Their values are displayed as $F_c^{\text{Ubal}}(B)$ in table 1. The relative errors $\delta^{\text{Ubal}} \equiv |F_c^N(B) - F_c^{\text{Ubal}}(B)|/F_c^N$ between our results and those of Ubal *et al.* (2005b) are less than 0.7 %. The last column of table 1 shows the strong dependence of the Faraday threshold on the surfactant coverage via the relative increase $\Delta \equiv |F_c^N(B) - F_c|/F_c$. Our results show that increasing B stabilises the interface, as observed in previous studies (Henderson 1998; Ubal *et al.* 2005a).

Table 2 shows the increase in the Faraday threshold for many other values of elasticity number β_s and surfactant coverage Γ_0 . The damping rate increases with either of these parameters, leading to an increase in the threshold of Faraday waves. We note that the threshold depends almost entirely on their combination, B ; that is, when β_s and Γ are varied so as to produce the same value of B , then F_c^N is unchanged. See, for example, the parameter pairs $(\beta_s = 0.45, \Gamma_0 = 0.40)$, which yield $B = 1.02$, $F_c^N = 43.0$ and $(\beta_s = 0.80, \Gamma_0 = 0.25)$, which yield $B = 1.03$, $F_c^N = 43.6$. Other pairs of (β, Γ_0) values that yield very close values of B and F_c^N can also be seen in table 2.

After a transient phase, Faraday waves appear, which correspond to subharmonic waves whose amplitude is steady and whose response period T is twice that of the forcing period. We set $t = 0$ to be an instant within the steady-amplitude Faraday-wave regime. The computations for assessing the influence of B on interfacial dynamics in the nonlinear

β_s	Γ_0	B	F_c^N	$\Delta(\%)$
0.10	0.50	0.30	13.02	5.51
0.85	0.10	0.40	13.09	6.07
0.25	0.40	0.57	14.69	19.0
0.15	0.60	0.61	15.32	24.1
0.20	0.50	0.62	15.45	25.2
0.65	0.20	0.65	15.62	26.5
0.75	0.20	0.75	15.92	29.0
0.50	0.30	0.79	16.05	30.0
0.35	0.40	0.80	16.09	30.4
0.30	0.50	0.92	16.45	33.4
0.45	0.40	1.02	17.65	43.0
0.80	0.25	1.03	17.72	43.6
0.35	0.50	1.08	18.58	50.5
0.50	0.40	1.14	18.61	50.8
0.40	0.50	1.23	18.63	51.0
0.60	0.40	1.37	18.92	53.3
0.45	0.50	1.39	19.01	54.0
0.35	0.60	1.42	19.08	54.6
0.50	0.50	1.51	19.18	55.4
0.45	0.60	1.83	20.08	62.7
0.60	0.50	1.85	20.83	68.8
0.70	0.50	2.16	20.99	70.0

Table 2. Numerical threshold acceleration F_c^N for wavelength λ_c and varying β_s , Γ_0 and B , and its relative increase $\Delta \equiv (F_c^N - F_c)/F_c$ from the surfactant-free case. The bold data are used in figure 2.

regime are conducted for $F = 1.1F_c^N$ on a larger lateral surface area of $3\lambda_c \times 3\lambda_c$. In the surfactant-free case, we observe square patterns.

As shown in figure 2(a), for $B < 1$ (dark blue dots, purple region), the interface exhibits square symmetry. In a narrow band of $1 \leq B \leq 1.23$ (light blue dots), the vertical and horizontal directions differ slightly; we refer to these patterns as asymmetric squares. Within $1.23 \leq B \leq 1.46$ (orange dots), the asymmetric square pattern undergoes a transition to weakly wavy stripes. Ridges (ellipses whose major axes are in the y -direction) appear very faintly as dots for $B = 1.23$, $t = 3T/4$, and more prominently on the wavy stripes for $B = 1.51$. For $B = 1.83$, $t = 0$, one can also see circular hills between each set of ridges. The hills are the continuation of the ridges formed in the previous half-period. One such instance is shown at $t = 3T/4$, where the ridges have disappeared but the hills are present. We explore below the role of Marangoni stresses in the formation of these patterns.

To quantify the patterns, we evaluate the spatial Fourier spectra for the surface height, ζ , and surfactant concentration, Γ , defining $\hat{\zeta}_{mn}(t)$ and $\hat{\Gamma}_{mn}(t)$ to be the Fourier coefficients associated with the (x, y) wavevector \mathbf{k}_{mn} . We then set $\zeta_{mn} \equiv \max_{[t, t+T]} |\hat{\zeta}_{mn}(t)|$ and $\Gamma_{mn} \equiv \max_{[t, t+T]} |\hat{\Gamma}_{mn}(t)|$. Figures 2(c,d) present an overview of the spatial Fourier spectra of ζ and Γ as a function of B in the range $B \in [0, 1.51]$. At higher B , ridges and hills emerge, where steep spatial gradients and many higher spatial harmonics appear.

For $B < 1$, the square pattern is characterised by comparable amplitudes of ζ_{10} and ζ_{01} , as shown in figure 2(c). For $B < 0.5$, where Marangoni effects are weak, the ζ_{mn} modes have magnitudes similar to those associated with the clean case corresponding to $B = 0$, consistent with previous findings (Constante-Amores *et al.* 2021). For $B > 1$, Marangoni-driven stresses dominate over inertial effects. The square symmetry is broken, and by

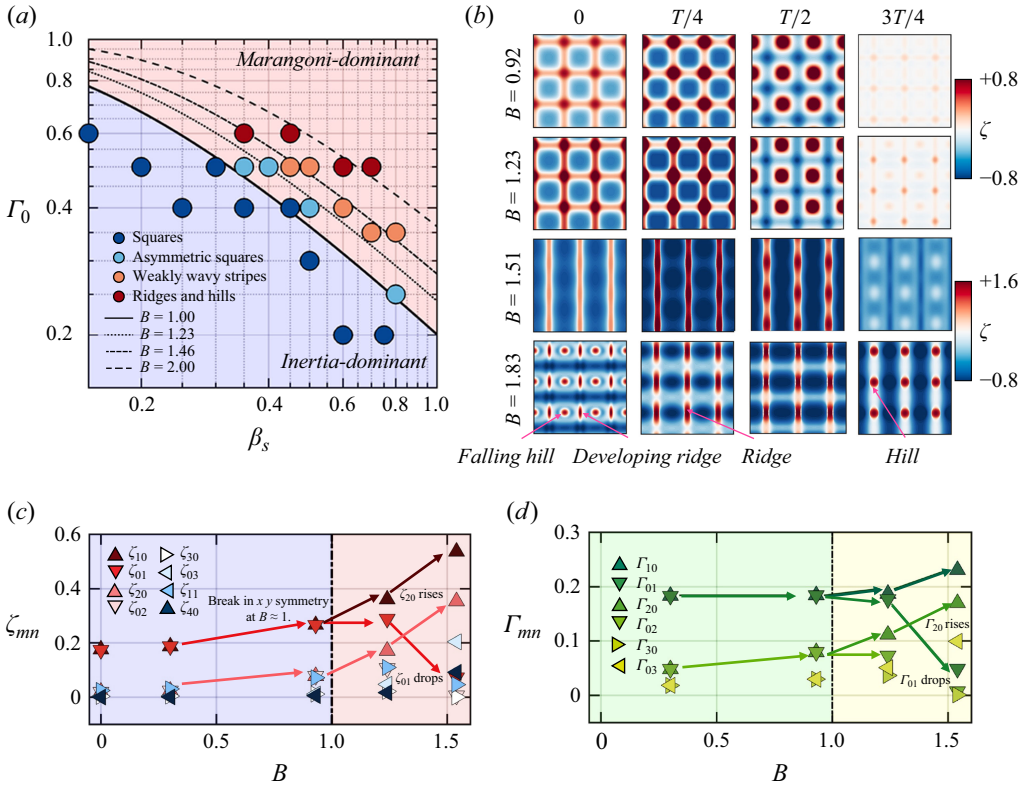


Figure 2. (a) Phase diagram in the $\beta_s - \Gamma_0$ parameter plane showing the inertia-dominated (violet) and Marangoni-dominated (pink) regions. The solid, dotted, dot-dashed and dashed lines correspond to the $B = 1, 1.23, 1.46, 2$ contours, respectively. The four typical patterns are squares, asymmetric squares, weakly wavy stripes, and ridges and hills. The phase boundaries are accurate to within $\Delta B = \pm 0.1$. The corresponding values of B and F_c^N are reported in table 2. (b) Spatiotemporal evolution of the surface deflection ζ over one time period is shown from left to right; squares ($B = 0.92$), asymmetric squares ($B = 1.23$), weakly wavy stripes ($B = 1.51$), and ridges and hills ($B = 1.83$) are shown from top to bottom rows, respectively. Panels (c,d) show ζ_{mn} and Γ_{mn} , the maximal magnitudes over time of the ζ and Γ Fourier coefficients, respectively, as a function of B .

$B = 1.23$, ζ_{10} surpasses ζ_{01} , with an increase in higher-order modes, such as the ζ_{20} mode. As B increases further, strong x -dependent modes emerge, leading to a transition from asymmetric squares to stripes (see figure 2c).

A parallel change occurs in the Γ -spectrum. For $B < 1$, the surfactant is advected without being significantly hindered by Marangoni stresses, aligning the Γ -spectrum with the ζ -spectrum, where Γ_{10} and Γ_{01} dominate (see figure 2d). For $B > 1$, Γ_{10} begins to surpass Γ_{01} . Thus, $B \approx 1$ is a pivotal point in the dynamics, at which there is an equilibrium between the opposing mechanisms of advection-driven surfactant inhomogeneity and Marangoni-driven homogeneity.

We now turn to the formation of hills and ridges on the interface. Figures 3(a–d) illustrate the evolution of a small portion of the interface, colour-coded by surfactant concentration. During the first half-cycle, the ridges rise, and the fluid and surfactant flow up from the troughs, advecting the surfactant to the apex of the ridge. Figures 3(e–h) show two-dimensional projections containing arc s , as indicated in figure 3(a). As the surfactant is advected towards the apex, a Γ -deficit (higher σ) is created at the trough.

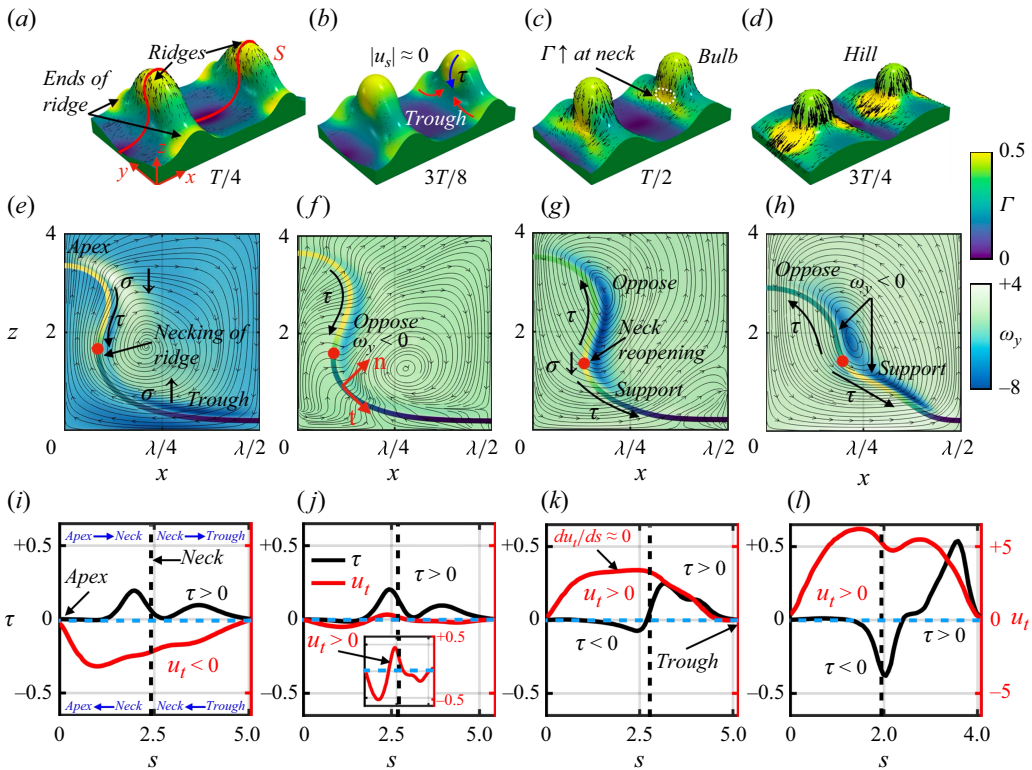


Figure 3. (a–d) Three-dimensional visualisation of the surface. (a) Rise of ridges and necking process at $t = T/4$ and (b) maximum rise of the ridge at $t = 3T/8$. (c) Prominent hill on the ridge at $t = T/2$. (d) Falling hill at $t = 3T/4$. (e–h) Two-dimensional projections on $x-z$ slice containing interface curve s (indicated in (a)) for $t = T/4, 3T/8, T/2$ and $3T/4$, respectively. A half-wavelength (ridge to trough) is shown. Colour-coding of the plane indicates y -vorticity ω_y , while streamlines show flow in the $x-z$ plane. The interface curve s is coloured according to the surfactant concentration. Red dots indicate the point of maximum curvature. (i–l) Tangential (see (f)) Marangoni stress and velocity along s at $t = T/4, 3T/8, T/2$ and $3T/4$ shown as black and red curves, respectively. When the sign of one of these quantities is positive (negative), its direction points rightwards (leftwards) from the apex (trough) through the neck to the trough (apex) of the ridge, as indicated at the top (bottom) of figure 3(i). The vertical dashed line indicates the necking region, shown as the red dot in the corresponding $x-z$ projection. The length of s decreases from approximately 5 at $t = T/4, 3T/8, T/2$ to approximately 4 at $t = 3T/4$, as can be seen in the curves in (e–h).

The capillary force resulting from the Γ -deficit leads to the emergence of a bulb on the ridge, surrounded by a narrow region of negative curvature, which we call a neck, and which is highlighted by a red spot on the interface in figures 3(e–h); Γ accumulates at the ends of the ridge as shown in figures 3(a,b). Marangoni stresses along s counteract the Γ -inhomogeneity caused by the surface advection. This is shown in figure 3(i), where $\nabla_s \sigma \cdot \mathbf{t} = \tau > 0$ and $\mathbf{u}_s \cdot \mathbf{t} = u_t < 0$ along the arc s . We call this a barrier. This barrier rigidifies the surface during the first half-cycle, leading to $|\mathbf{u}_s| \approx 0$ at $t = 3T/8$, as shown in figure 3(b).

The negative vorticity along the surface in figure 3(f) indicates that τ opposes the surface advection. Due to this barrier, a backflow develops on the surface from the apex towards the neck, as indicated by $u_t > 0$ in the inset of figure 3(j). This drives surfactants from the apex towards the neck. Simultaneously, the accumulated surfactant at the ends of the ridge flows towards the neck due to a similar mechanism, as illustrated by the red

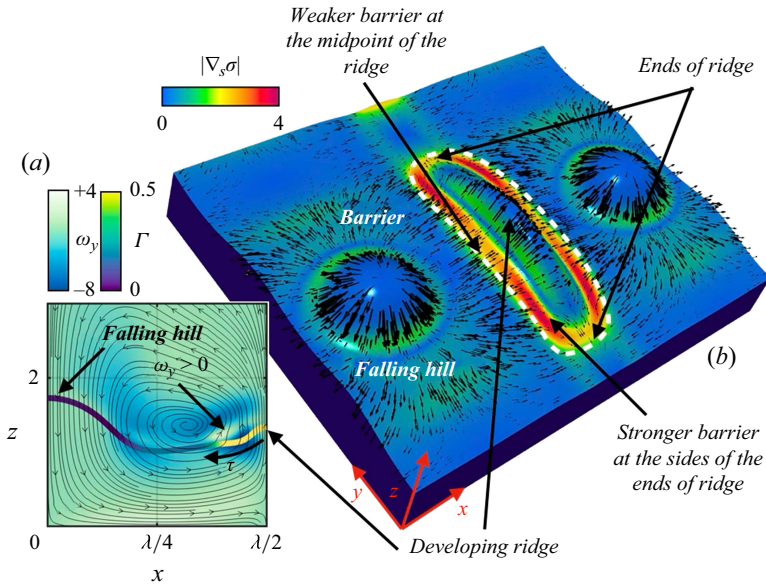


Figure 4. Marangoni-influenced ridge formation: (a) $x-z$ projection containing s , as defined in figure 3, at $t = T$; the colour-coding used here is that of figure 3. (b) Three-dimensional visualisation of the interface colour-coded by the magnitude of Marangoni stresses $|\nabla_s \sigma|$, indicating the barriers around the rising ridge.

arrows in figure 3(b). During this process, the midpoint of the ridge rises to form a bulb; see figure 3(c). By $t = T/2$, Γ is maximal (so σ is minimal) at the neck.

The accumulated surfactant causes Marangoni stresses, with distinct peaks of $\tau > 0$ and $\tau < 0$ across the neck (figure 3k). The barrier is now formed at the neck (shown as a white dotted region in figure 3c) where these stresses in the region between the apex and the neck begin to oppose the flow reversal at half-cycle. Meanwhile, surface tension decreases at the neck. As a result, the neck begins to reopen (see the streamlines in figure 3g) as is commonly observed in surfactant-laden neck reopening phenomena, discussed in detail in Constante-Amores *et al.* (2021).

In the next half-cycle ($t \geq T/2$), the ridge begins to fall. However, the opposing Marangoni stress between the neck and the apex ($\tau < 0$ in figure 3k) slows the collapse of this region. This slower descent of u_t ($du_t/ds \approx 0$) leads to the formation of the hill on the ridge. Meanwhile, at $t = 3T/4$, the region between the neck and the trough continues to fall more quickly than the hill. This accelerated fall is driven by the surfactant gradients towards the trough ($\tau > 0$ as shown in figure 3l) which, instead of opposing the bulk flow as before, now begin to support it due to $u_t > 0$. The presence of two high-vorticity regions (blue zones) along the interface in figure 3(h) is an effect of the two distinct roles of Marangoni stresses at the neck. As a consequence, new ridges develop while the hills of the previous cycle are still present, as seen in figure 2 at $t = 0$, $B = 1.83$.

Figure 4 further elucidates the mechanism of ridge formation. The surfactant accumulates on the developing ridge due to a combination of Marangoni-driven surface flow from the neck to the trough ($\tau > 0$ in figure 3h,l) as previously discussed, and advection through bulk flow in the second half-cycle leading to strong surface compression at the ridge. This accumulation (see Γ -surplus region highlighted in figure 4a) generates a Marangoni stress, directed from the newly developed ridge toward the falling hill (as highlighted by the arrow indicating the direction of τ in figure 4a). The magnitude of the Marangoni stress, $|\nabla_s \sigma|$, is shown in figure 4(b). This high-stress region, which surrounds

the developing ridge, highlights the strength of the barrier to ridge formation. Close inspection of this region reveals that the barrier is weaker at the midpoint of the ridge, allowing stronger inward-directed surface flow to this region (*viz.* the velocity glyphs in figure 4*b*). This, in turn, leads to a higher elevation at the midpoint of the ridge than at its ends, as shown in figure 4*b*).

4. Conclusion

The study highlights the role of Marangoni stresses in Faraday-wave-pattern transitions. Numerical simulations were validated against previously reported two-dimensional simulation. Using the parameter B to compare the Marangoni and inertial time scales, we found that the threshold acceleration increases with B . After we evaluated B , we increment the acceleration by 10 % of their respective threshold acceleration. Square patterns are observed for the surfactant-free interface. For the surfactant-covered interface, we found four different patterns as we increased B . We showed that at $B \approx 1$, square patterns transition to asymmetric squares. Increasing Marangoni strength further, asymmetric squares change to weakly wavy stripes. The novel finding highlighted here is the fact that at further higher B values, ridges and hills appear. Due to strong Marangoni flow during a cycle of forcing, surfactant and surface flow compete ($\tau > 0$ and $u_t < 0$), which we call a barrier. The barrier slows down a rising ridge which then reaches its maximum height, resembling a bulb, at $t = 3T/8$. While the bulb falls in the next half-cycle, a Γ -surplus region forms at the neck of the ridge. This creates a bi-directional Marangoni stress, where the flow is opposed (supported) between the apex (neck) and the neck (trough). This led to a faster collapse of the ridge between the neck and the trough. However, the bulb falls at a slower rate resembling a hill structure on the ridge. In the next cycle, Γ accumulates at the newly forming crest. The barrier is weaker at the midpoint than at the sides of the rising crest. This creates a faster rise of the midpoint of the crest, resembling a ridge structure. The existence of such a barrier at the newly forming crest and at the neck are the cause of the formation of these interesting ridges and hills.

Acknowledgements. D.P. and L.K. acknowledge HPC facilities provided by the Imperial College London Research Computing Service. D.P. acknowledges Imperial College President's scholarship for his doctoral studies. D.J. and J.C. acknowledge support through HPC/AI computing time at the Institut du Développement et des Ressources en Informatique Scientifique (IDRIS) of the Centre National de la Recherche Scientifique (CNRS), coordinated by GENCI (Grand Equipement National de Calcul Intensif) grant 2024 A0162B06721. The numerical simulations were performed with code BLUE (Shin *et al.* 2017, 2018) and the visualisations were generated using ParaView.

Funding. This work was supported by the Engineering and Physical Sciences Research Council, UK, through the PREMIERE (EP/T000414/1) programme grant and the ANTENNA Prosperity Partnership (EP/V056891/1). O.K.M. acknowledges funding from PETRONAS and the Royal Academy of Engineering for a Research Chair in Multiphase Fluid Dynamics.

Declaration of interests. The authors report no conflict of interest.

REFERENCES

- AITKEN, J. 1884 On the effect of oil on a stormy sea. *Proc. R. Soc. Edin. A* **12**, 56–75.
- CONSTANTE-AMORES, C.R., BATCHVAROV, A., KAHOUADJI, L., SHIN, S., CHERGUI, J. & MATAR, O.K. 2021 Role of surfactant-induced Marangoni stresses in drop-interface coalescence. *J. Fluid Mech.* **925**, A15.
- EBO-ADOU, A.-H., TUCKERMAN, L.S., SHIN, S., CHERGUI, J. & JURIC, D. 2019 Faraday instability on a sphere: numerical simulation. *J. Fluid Mech.* **870**, 433–459.
- FARADAY, M. 1831 On a peculiar class of acoustical figures; and on certain forms assumed by groups of particles upon vibrating elastic surfaces. *Phil. Trans. R. Soc. Lond. A* **121**, 299–340.

- FRANKLIN, B., BROWNRIGG, W. & FARISH, M. 1774 Of the stilling of waves by means of oil. Extracted from sundry letters between Benjamin Franklin, LL.D.F.R.S. William Brownrigg, M.D.F.R.S. and the Reverend Mr. Farish. *Phil. Trans.* **64**, 445–460.
- HENDERSON, D.M. 1998 Effects of surfactants on Faraday-wave dynamics. *J. Fluid Mech.* **365**, 89–107.
- KAHOUADJI, L., PÉRINET, N., TUCKERMAN, L.S., SHIN, S., CHERGUI, J. & JURIC, D. 2015 Numerical simulation of supersquare patterns in Faraday waves. *J. Fluid Mech.* **772**, R2.
- KUMAR, K. & TUCKERMAN, L.S. 1994 Parametric instability of the interface between two fluids. *J. Fluid Mech.* **279**, 49–68.
- KUMAR, S. & MATAR, O.K. 2002 Parametrically driven surface waves in surfactant-covered liquids. *Proc. R. Soc. Lond. A* **458**, 2815–2828.
- KUMAR, S. & MATAR, O.K. 2004 On the Faraday instability in a surfactant-covered liquid. *Phys. Fluids* **16**, 39–46.
- LAU, Y.M., WESTERWEEL, J. & VAN DE WATER, W. Using Faraday waves to measure interfacial tension. *Langmuir* **36** (21), 5872–5879.
- LOHSE, D. 2023 Surfactants over troubled waters. *J. Fluid Mech.* **976**, F1.
- MILES, J.W. 1967 Surface-wave damping in closed basins. *Proc. R. Soc. Lond. A* **297**, 459–475.
- MURADOGLU, M. & TRYGGVASON, G. 2008 A front-tracking method for computation of interfacial flows with soluble surfactants. *J. Comput. Phys.* **227** (4), 2238–2262.
- PANDA, D., KAHOUADJI, L., ABDAL, A.M., TUCKERMAN, L.S., SHIN, S., CHERGUI, J. & MATAR, O.K. 2024 Drop medusa: direct numerical simulations of high-frequency Faraday waves on spherical drops. *Phys. Rev. Fluids* **9** (11), 110514.
- PANDA, D., KAHOUADJI, L., TUCKERMAN, L.S., SHIN, S., CHERGUI, J., JURIC, D. & MATAR, O.K. 2023 Axisymmetric and azimuthal waves on a vibrated sessile drop. *Phys. Rev. Fluids* **8** (11), 110510.
- PÉRINET, N., JURIC, D. & TUCKERMAN, L.S. 2009 Numerical simulation of Faraday waves. *J. Fluid Mech.* **635**, 1–26.
- SHIN, S., CHERGUI, J. & JURIC, D. 2017 A solver for massively parallel direct numerical simulation of three-dimensional multiphase flows. *J. Mech. Sci. Technol.* **31**, 1739–1751.
- SHIN, S., CHERGUI, J., JURIC, D., KAHOUADJI, L., MATAR, O.K. & CRASTER, R.V. 2018 A hybrid interface tracking – level set technique for multiphase flow with soluble surfactant. *J. Comput. Phys.* **359**, 409–435.
- STONE, H.A. 1990 A simple derivation of the time-dependent convective-diffusion equation for surfactant transport along a deforming interface. *Phys. Fluids A* **2** (1), 111–112.
- STRICKLAND, S.L., SHEARER, M. & DANIELS, K.E. 2015 Spatiotemporal measurement of surfactant distribution on gravity–capillary waves. *J. Fluid Mech.* **777**, 523–543.
- UBAL, S., GIAVEDONI, M.D. & SAITA, F.A. 2005a Elastic effects of an insoluble surfactant on the onset of two-dimensional Faraday waves: a numerical experiment. *J. Fluid Mech.* **524**, 305–329.
- UBAL, S., GIAVEDONI, M.D. & SAITA, F.A. 2005b The formation of Faraday waves on a liquid covered with an insoluble surfactant: influence of the surface equation of state. *Latin Am. Appl. Res.* **35**, 59–66.
- WESTRA, M.-T., BINKS, D.J. & VAN DE WATER, W. 2003 Patterns of Faraday waves. *J. Fluid Mech.* **496**, 1–32.