

Conservation challenges regarding species status assessments in biogeographically complex regions: examples from overexploited reptiles of Indonesia

KYLE J. SHANEY, ELIJAH WOSTL, AMIR HAMIDY, NIA KURNIAWAN
MICHAEL B. HARVEY and ERIC N. SMITH

Abstract IUCN Red List assessments are important for conservation and management initiatives. However, status assessments are often challenging because of poor sampling between biogeographical regions. Researchers sometimes assess poorly known species, which can have unforeseen ramifications, including the trade of rare and cryptic species under common species names. Here, we address this issue in relation to economically important reptile species in Indonesia. We reviewed examples of single species categorized as Least Concern for which the assessments probably encompassed multiple closely related species. We also examined Red List assessments that utilized species distribution modelling techniques, and identified biogeography as a major barrier to using such methods. To test how biogeography may affect status assessments we used our own model lizard system from Indonesia, taking an integrative phylogeographical approach to quantify status assessments under contrasting scenarios. We show that failure to account for biogeographical breaks leads to significant variation in Red List status. Our model system fluctuates from Least Concern to Endangered, depending upon whether biogeographical boundaries are considered in taxonomic evaluations. We identify Sauria (lizards) and Serpentes (snakes) as major lineages requiring taxonomic and conservation attention in Indonesia. We also make the following recommendations: (1) Indonesia's trade quotas should further subdivide management zones to account for gaps in taxonomic evaluations; (2) genetic sampling should be considered a high priority during wildlife exportation processes from poorly studied geographical areas; and (3) continuation of thorough biological inventory is critical for

conservation initiatives across heterogeneous mountain and island landscapes.

Keywords Biogeography, conservation, cryptic, diversity, species distribution modelling, threatened, trade, wildlife

The supplementary material for this article can be found at <http://dx.doi.org/10.1017/S0030605316000351>

Introduction

The ability of wildlife officials to appropriately manage a given species or population depends on the quality of data available. Wildlife officials require accurate information to set harvest quotas, establish protected areas and propose management regulations (Margules & Pressey, 2000), and many rely on the IUCN Red List (IUCN, 2015) for this information. However, many species have yet to be assessed or have been categorized as Data Deficient until more information becomes available. Broad geographical sampling is needed to determine a species' conservation status accurately, particularly for potentially cryptic species (undescribed, similar species). This is especially important when assessing the status of species inhabiting large geographical ranges and multiple habitat types. Without systematic analysis, cryptic species are harvested and traded under the name of closely related common species, which could lead to the extinction of undescribed species. Brown et al. (2007) described an example of population declines in cryptic giraffe lineages hidden under a common species name with a lower risk status. Lohman et al. (2010) described a similar scenario for cryptic, island bird lineages in the Philippines, and other examples are provided in Bernardo (2011). Despite this major conservation concern, status assessments are sometimes made in geologically complex regions where little is known about the extent of biological diversity.

Loss of cryptic species may be acute in countries such as Indonesia, where an absence of data across many islands or mountains makes accurate Red List assessment difficult to accomplish. The Pacific Ring of Fire includes much of Indonesia and the unique geology has facilitated the evolution of widespread species diversity. Indonesia also encompasses many major biogeographical breaks, including Huxley's Line, Lydekker's Line, Wallace's Line and Weber's

KYLE J. SHANEY (Corresponding author), ELIJAH WOSTL and ERIC N. SMITH The Amphibian and Reptile Diversity Research Center and Department of Biology, University of Texas at Arlington, 501 S. Nedderman Drive, Arlington, Texas 76010, USA. E-mail kjshaney@uta.edu

AMIR HAMIDY Laboratory of Herpetology, Museum Zoologicum Bogoriense, Research Center for Biology, Indonesian Institute of Sciences, Bogor, West Java, Indonesia

NIA KURNIAWAN Department of Biology, Universitas Brawijaya, Malang, East Java, Indonesia

MICHAEL B. HARVEY Department of Biological Sciences, Broward College, Davie, Florida, USA

Received 24 November 2015. Revision requested 24 February 2016.
Accepted 29 March 2016. First published online 7 July 2016.

Line. In turn, taxonomic relationships are difficult to resolve across the region. Further complicating the issue, anthropogenic pressures are causing a rapid decline in diversity. Agricultural practices across the Greater Sunda Islands (Borneo, Java and Sumatra) have resulted in one of the world's highest rates of deforestation (Sodhi et al., 2004), with forests being converted into oil palm, rubber, tea and coffee plantations (Myers et al., 2000; Miettinen et al., 2014). These practices, in combination with a lack of wildlife management resources and personnel, have led to unregulated overharvesting of resources. The islands of Java and Sumatra are of particular concern, and it is estimated that only 6% of the original forest remains on Java, and 35% on Sumatra (Brooks et al., 1997; Achard et al., 2002; Margono et al., 2012).

The Greater Sunda Region (or Sundaland) encompasses much of West Indonesia and is considered to be a biodiversity hotspot (CEPF, 2004). The islands of the region are home to a variety of endemic and threatened species (Shepherd et al., 2004) but many vertebrate groups remain poorly studied, particularly reptiles. Few herpetofaunal surveys have been conducted throughout the Greater Sunda Region in recent times and the extent of reptilian diversity in Java and Sumatra is unknown (Iskandar & Erdelen, 2006), with significant gaps in taxonomic assessments. Compounding this issue, reptiles have been exploited for skin, meat and the pet trade throughout Indonesia (Shepherd, 2000; Natusch & Lyons, 2012; Nijman et al., 2012). Given the demand for reptiles, quotas and other management decisions based on species status are critical. Indonesia is considered to be an epicentre for illegal wildlife trade, and reptiles are traded in higher volume than any other taxonomic group throughout the Greater Sunda Region (Natusch & Lyons, 2012). The reptile extinction risk across the Indo-Malayan region has been described as one of the highest in the world (Böhm et al., 2013). Although CITES has implemented export quotas for multiple reptile species in Indonesia, species are continually misidentified and quotas are often applied across vast regions, sometimes neglecting to account for geographical isolation and potentially unrecognized lineages.

Here we highlight taxonomic and biogeographical challenges impeding conservation status assessments in Indonesia. We start by reviewing previous Red List assessments throughout Indonesia, and identify species categorized as Least Concern that are probably species complexes (multiple species assessed as one). We then use a model organism, *Pseudocalotes tympanistriga* (a lizard native to Indonesia), to test and contrast species status simulations under various species distribution modelling scenarios. Using these data we quantify the potential effects of complex biogeography on Red List status outcomes.

Methods

We gathered information on the status of all currently recognized reptiles in Java and Sumatra, to assess the conservation knowledge of major reptilian lineages. We focus specifically on Javan and Sumatran reptiles because our own herpetofaunal surveys conducted over the last 3 years focused on these islands. To generate a comprehensive list of all species of reptiles known to occur on Java and Sumatra we searched primary literature and web-based databases (Das, 2010; The Reptile Database, 2015). For each species we obtained its conservation status from the IUCN Red List (IUCN, 2015). Species not on the Red List were categorized as Not Evaluated. Using these sources we produced a summary of the Red List status of Javan and Sumatran reptiles, by major taxonomic group (crocodiles, lizards, snakes and turtles).

Species of Least Concern, and major biogeographical boundaries

The issue of species complexes is clearly defined in the IUCN guidelines for status assessment (IUCN, 2010). IUCN is not a taxonomic authority, and those who conduct Red List assessments conduct the best assessments possible with the information available. However, the challenges of complex biogeography and lack of funding for biological inventory can lead to significant problems when conducting Red List assessments.

We searched for examples of species complexes previously assessed for the IUCN Red List that span major biogeographical boundaries, widening our focus to include all reptile species that inhabit Indonesia (beyond the status assessments discussed above). We focused on species categorized as Least Concern because their Red List assessments are commonly based on a large distribution and the ability to occupy multiple habitat types. These characteristics suggest that multiple species may be assessed as a single Least Concern species. We further narrowed the list to species that are commonly exploited in trade, because cryptic species are likely to be more affected in such scenarios. The final list identified multiple commercially traded species that are categorized as Least Concern yet whose ranges cross distinct biogeographical boundaries. An exhaustive review of all Least Concern species that fall within this scenario is not feasible, and therefore we focus on three species for which sufficient background information is available for our study: *Bronchocelea jubata*, *Varanus indicus* and *Varanus salvator*. We also discuss a fourth species, *Varanus marmoratus*, but we include this in the discussion of the *V. salvator* complex, from which it recently split.

A model system for status simulations

We identified a model system to quantify the effect of neglecting to consider biogeography in status assessments.

We used *P. tympanistriga* (Gray, 1831), a medium-sized arboreal lizard of the family Agamidae (Manthey, 2008), to simulate status assessments under various scenarios. Based on biogeography and a lack of taxonomic work we inferred that *P. tympanistriga* was in fact a species complex, and therefore any attempt to assess its status was likely to be inaccurate. We collected historical information, which assumes that *P. tympanistriga* is a single species, ranging across the islands of Java and Sumatra. We compared these data with the findings of our herpetofaunal surveys of Java and Sumatra during 2012–2014. During our surveys we systematically targeted geographically isolated mountain ranges to fill in sampling gaps. We then assessed basic phylogeographical relationships of *P. tympanistriga* and made contrasting simulations.

We used a combination of molecular and morphological characters to delimit species boundaries. To identify specimens of *P. tympanistriga* we first used the methods of Harvey et al. (2014). Our morphological analysis facilitated identification of specimens closely related to *P. tympanistriga* for assessment. Considering all similar individuals (tentative *P. tympanistriga*) collected from Java and Sumatra, we sequenced the mitochondrial gene ND4 for a subset of individuals from each unique locality. We used the ND4-LEU mitochondrial fragment, which is commonly used in phylogenetic analyses of agamid lizards (Leaché et al., 2009). We decided upon a single gene analysis on the basis that the morphological data in combination with a single gene analysis should provide corroboration of correct taxonomic placement prior to Red List assessment. DNA extraction methods and polymerase chain reaction (PCR) amplification protocols followed Leaché et al. (2009).

We included sequences from eight *Pseudocalotes* individuals and three out-groups in our phylogenetic analysis (out-groups were the genera *Bronchocela*, *Calotes* and *Gonocephalus*). Specific details on sequence generation and analysis are provided in Harvey et al. (2015). We first conducted an unweighted pair group method with arithmetic mean analysis, to determine raw genetic divergence between specimens. Next, we conducted a Bayesian analysis following the protocols outlined in Harvey et al. (2015), to visualize phylogenetic relationships. Using morphological data and overall genetic divergence between individuals as a guideline, we allocated specimens to the species *P. tympanistriga* and to other species where necessary (previously cryptic species). All sequences have been deposited in GenBank (GenBank, 2015) under accession numbers KT180139–KT180152 and KT211019 (Supplementary Table S1).

Quantifying effects of taxonomic uncertainty

Here, we quantify the effect of complex landscapes on Red List assessments. IUCN provides a clear set of guidelines for

determining species status (IUCN, 2001, 2010). If an assessment meets specific criteria defined for any of the three threatened categories, the status Critically Endangered, Endangered or Vulnerable is assigned. Alternatively, a species may be categorized as Near Threatened, Least Concern or Data Deficient. If status can be assessed using multiple methods, IUCN recommends using the most conservative estimate. In our simulation we chose a straightforward method for rapid assessment, which focused on the geographical range of the species in question. We used two metrics to emulate the Red List assessment of *P. tympanistriga*, Area of Occupancy (AOO) and Extent of Occurrence (EOO), which require only the geographical coordinates of all individuals collected.

After identifying true *P. tympanistriga* individuals for Red List assessment we uploaded collection coordinates from a global positioning system into the program GeoCAT (Bachman et al., 2011), which makes IUCN Red List assessments based on the EOO and AOO of the species in question.

We ran two analyses to contrast possible conservation status outcomes. In the first analysis (Simulation 1) we used all confirmed *P. tympanistriga* samples and uploaded their localities into GeoCAT. We specified an AOO of 15 km² (per individual), which is the approximate extent of highland forest habitat on mountain islands inhabited by the species in West Java. Next, we analysed all *Pseudocalotes* samples from Java and Sumatra (Simulation 2) that would have all been considered to be *P. tympanistriga* prior to our taxonomic work (without consideration of geographical boundaries). We uploaded their localities into GeoCAT and assigned an AOO of 25 km² (per individual). In Simulation 2 our *Pseudocalotes* samples from further north in Sumatra expanded the EOO significantly, leaving larger mountainous areas unaccounted for in sampling. Thus, we used a larger AOO in Simulation 2 to account for wider sampling gaps, for a more realistic representation of a highland species' range in that scenario. It is important to note that these methods require a high degree of confidence in sufficient sampling effort because failure to find individuals present across the entirety of their range can significantly alter the results. We believe our survey effort was sufficient to record accurate presence/absence information for *P. tympanistriga*, particularly because this was not a formal assessment.

Species distribution modelling

Niche modelling, or species distribution modelling, has been highlighted as a potential tool for assisting in IUCN Red List assessments, particularly when occurrence data are limited (Pena et al., 2014; Syfert et al., 2014). The modelling can be accomplished whether or not taxonomic work has been done, and therefore may overestimate a species' range and

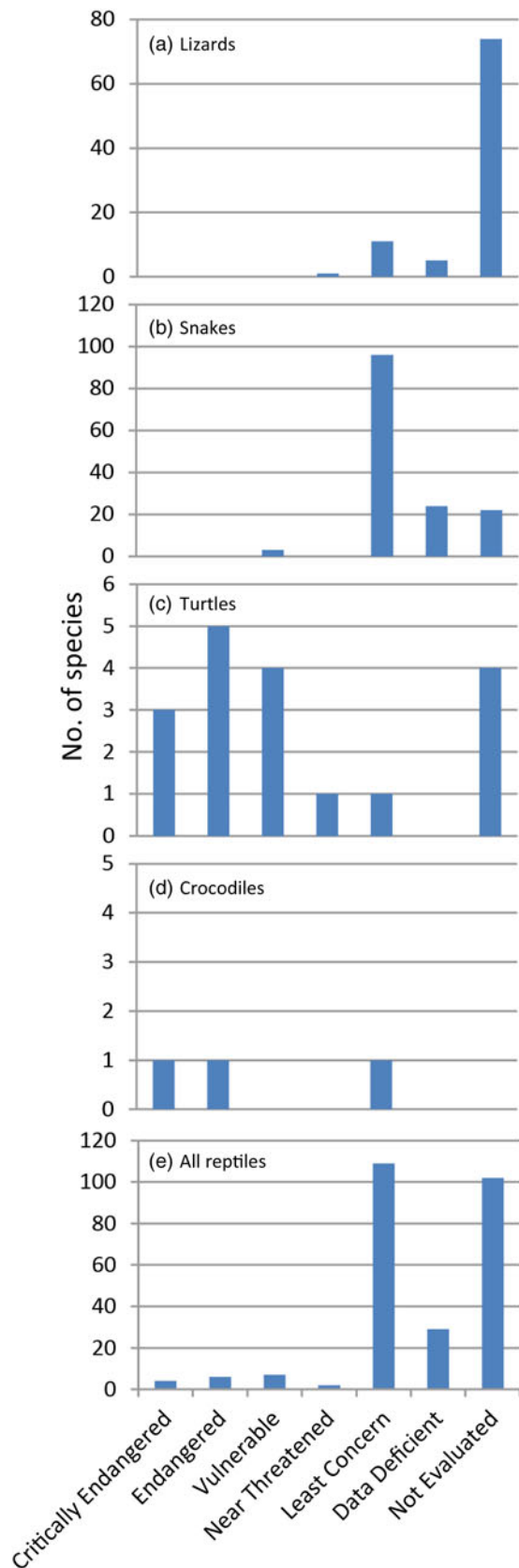


FIG. 1 Summarized status assessments of all currently recognized species of (a) lizards, (b) snakes, (c) turtles, (d) crocodiles, and (e) all reptiles combined on the islands of Java and Sumatra, Indonesia.

underestimate the level of threat it faces. We use our simulation species *P. tympanistriga* to emphasize these points.

We downloaded all 18 bioclimatic variable files (30 s resolution) available at WorldClim (2015). We formatted the files for species distribution modelling using the *Clip* and *Raster to ASC* tools in *ArcMap 10.0* (ESRI, Redlands, USA). We uploaded the climate files into the *MaxEnt 3.3.3k* niche modelling software (Phillips et al., 2006) and added our locality data for *P. tympanistriga* in conjunction with historical locality data (Manthey, 2008; HerpNet, 2015). We used the Auto Features settings and altered the number of iterations (from 500 to 5,000) to allow for convergence of data, changed the replicated run type to Subsample, and set the random test percentage to 25. Using these settings we modelled potential *P. tympanistriga* distribution. We assessed the omission data plot, the area under the curve plot and the species range map generated. The range map indicates the probability of occurrence (0.0–1.0). We arbitrarily considered high-quality habitat to be 0.9–1.0, medium-quality habitat to be 0.7–0.9, and low-quality habitat to be 0.5–0.7. Anything <0.5 was considered to be unsuitable habitat. We consider these arbitrary limits to be acceptable because (1) the estimates are conservative, and (2) they are only used to provide a relative indication of how species distribution models can affect estimates of EOO (not to determine the formal status).

Results

IUCN status of reptiles and amphibians in Java and Sumatra

A literature and web search revealed that there are 248 naturally occurring reptile species in Java and Sumatra (Supplementary Table S2), and eight species of questionable occurrence (sightings based on unconfirmed reports or possibly introduced). Of these species, three are crocodiles (Crocodylia), 18 are turtles (Testudines), 90 are lizards (Sauria) and 145 are snakes (Serpentes). We found that lizards had a lower percentage of species assessed than other groups, whereas crocodiles and turtles have received the most attention (Fig. 1).

Four species are categorized as Critically Endangered, six as Endangered, seven as Vulnerable, three as Near Threatened, 107 as Least Concern, 28 as Data Deficient, and 101 as Not Evaluated (Fig. 1). In total 50.5% of the reptile species from Java and Sumatra are categorized as Data Deficient or Not Evaluated, 42.2% are categorized as Least Concern, and 7.3% have a status of Near Threatened or worse.

Varanus salvator, *Varanus indicus* and *Bronchocela jubata*

The three species categorized as Least Concern that we reviewed are probably species complexes (multiple species

TABLE 1 Data on exports of *Varanus salvator* from Indonesia in 2013, with importing country, quantity, term and source.

Importing country	Quantity	Term	Source
Czech Republic	15	Live	Captive bred
Germany	74	Live	Wild
Germany	41	Leather products	Wild
Spain	25	Live	Wild
Spain	3,600	Skins	Wild
France	30	Live	Wild
France	563	Leather products	Wild
UK	40	Live	Captive bred
UK	55	Live	Wild
UK	7	Leather products	Wild
Italy	104	Leather products	Wild
Italy	44,017	Skins	Wild
Japan	75	Garments	Wild
Japan	4	Live	Captive bred
Japan	270	Live	Wild
Japan	60	Leather products	Wild
Japan	36,094	Skins	Wild
Mexico	47,500	Skins	Wild
Netherlands	248	Leather products	Wild
Singapore	207,205	Skins	Wild
USA	75	Live	Born in captivity
USA	1,916	Live	Wild
USA	17	Leather products	Captive bred
USA	3	Leather products	Confiscated or seized
USA	113	Leather products	Wild
USA	8,223	Skins	Wild

assessed as one), spanning major biogeographical breaks. The first, *V. salvator*, has been identified as the most heavily exploited species in the international skin trade (Koch et al., 2013). Indonesia has high export quotas for this species. Reports from 2000–2010 estimate that 6.2 million skins from wild caught *V. salvator* were traded during that period, and c. 11,500 skins were confiscated (Koch et al., 2013). To a lesser extent the species is also captured and traded for consumption (Koch et al., 2013). In addition, an unknown number of wild *V. salvator* are harvested every year from across their range. The species complex is listed in CITES Appendix II (CITES, 2016) and data on the known export of the species are available in the CITES Trade Database (CITES, 2015). Details of *V. salvator* exports from Indonesia in 2013 are in Table 1. Despite the high demand, there is little consideration for biogeographical barriers in current harvest quotas across Indonesia.

Varanus salvator was assessed as Least Concern in 2009 (Bennett et al., 2010), based on its wide distribution, abundance and ability to live in a range of habitats. However, at the time of assessment there were four recognized subspecies (specifically stated to be included in the assessment) and evidence of a large species complex (*V. salvator salvator*, *V. salvator bivittatus*, *V. salvator macromaculatus*, *V. salvator andamanensis*). The assessors clearly indicated the likelihood of undescribed species within the complex; for example, at

the time of assessment the range of the subspecies *V. salvator bivittatus* extended through Java and across Wallace's Line (a major biogeographical barrier) to multiple islands, including Bali, Lombok, Sumbawa, Flores, Ombai and Wetar (Fig. 2), yet there are no genetic or morphological data from these islands to confirm taxonomic relationships.

Prior to the Red List assessment taxa were resurrected in a morphological study of the *V. salvator* complex in 2007, and a population from Sulawesi was described as a distinct species, *V. togianus* (Koch et al., 2007). In 2010 a new subspecies (*V. salvator zieglerei*) was described from the Moluccan Islands far to the east of Sulawesi (Koch et al., 2010) and across another major biogeographical break (Huxley's Line; Fig. 2b). Therefore, one cryptic species from the middle of *V. salvator*'s distribution was elevated to species status (*V. togianus* in 2007), and the discovery of the new subspecies *V. salvator zieglerei* extended the distribution of the *V. salvator* complex further east. *Varanus salvator zieglerei* is a clear example of a questionable lineage being traded as *V. salvator*.

Similarly, *V. marmoratus* was assessed as Least Concern in 2007 (Gaulke et al., 2009), having been split from the *V. salvator* complex (Koch et al., 2007). However, in 2010 *V. marmoratus* was identified as a species complex, and two species from small island chains were described and split from *V. marmoratus*. These species are currently recognized

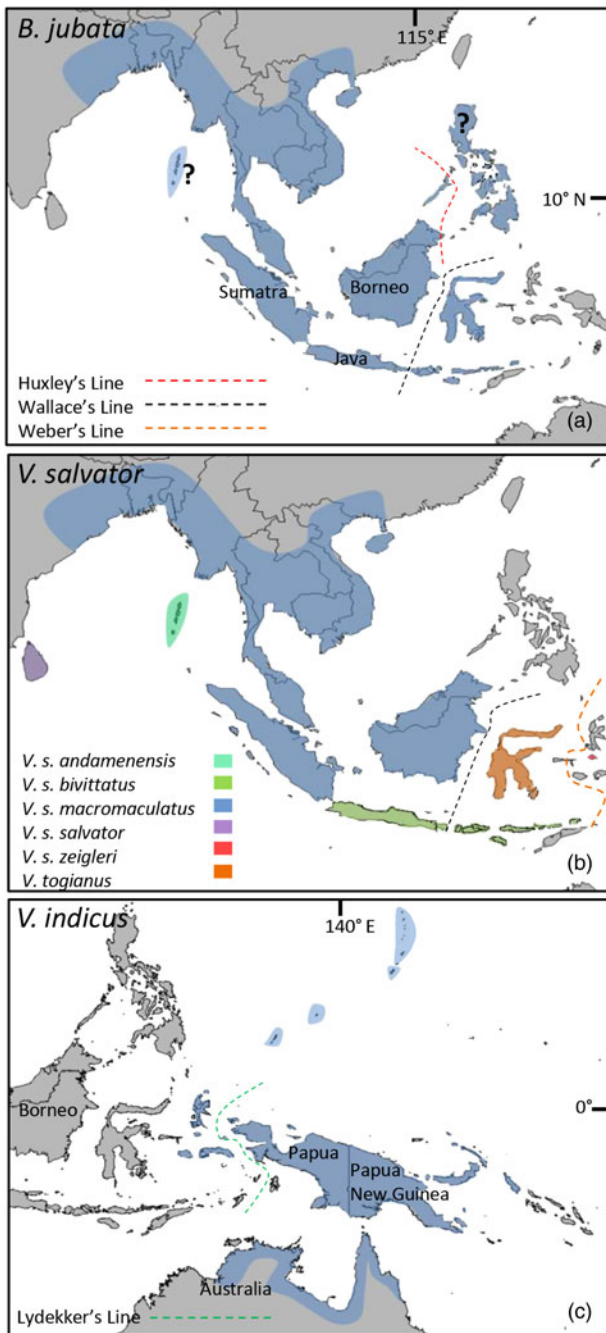


FIG. 2 The estimated range of (a) *Bronchocela jubata*, with the major biogeographical breaks (Wallace's and Huxley's Lines) indicated, and question marks indicating unknown occurrence in some areas, (b) *Varanus salvator* subspecies and the recently described species *Varanus togianus*, with Wallace's and Weber's Lines, and (c) *Varanus indicus*, with Lydekker's Line.

as *V. palawanensis* and *V. rasmusseni* (Koch & Böhme, 2010) but had been traded as a species of Least Concern since 2007, under the name *V. marmoratus*. Two more species from the *V. marmoratus* complex (*V. bangonorum* and *V. dalubhasa*) have since been described (Welton et al., 2014). As with the previous cases, these two species are still traded under a status of Least Concern.

Our second example, *V. indicus* (Daudin, 1802), occurs across much of eastern Indonesia (Fig. 2c) and was assessed as Least Concern in 2009 (Bennett & Sweet, 2010). *Varanus indicus* is traded heavily across Indonesia and is listed in CITES Appendix II (CITES, 2016). Although the species is protected in Indonesia, it is still traded in high numbers as bred in captivity, and it is difficult to differentiate between wild-caught and captive-bred individuals.

Prior to the assessment of *V. indicus* a new species, *V. caerulivierens*, was described from Halmahera Island (Ziegler et al., 1999). Another new species from Halmahera Island, *V. rainerguentheri*, was described by Ziegler et al. (2007), who also summarized the taxonomy of other species that had previously been split from *V. indicus*. These changes were an indication that *V. indicus* was more diverse than recognized, and in 2009 the assessors stated that *V. indicus* probably consisted of multiple cryptic species, spanning biogeographical boundaries (e.g. Lydekker's Line; Fig. 2c). There have been major taxonomic revisions since the Red List assessment; for example, the description, in 2010, of *V. obor*, from the northern Moluccas Islands (Weijola & Sweet, 2010), which confirms that at least one cryptic species was hidden under the categorization of *V. indicus* as Least Concern.

Varanus indicus also occurs on Savo Island (c. 30 km²), in the Solomon Archipelago (Koch et al., 2013). However, as the archipelago is distant from other *V. indicus* populations the species found there may be distinct from *V. indicus*. This is yet to be determined, but high trade quotas across the region could wipe out that small island population before this question is answered.

Bronchocela jubata (Duméril & Bibron, 1837) has received less attention than *Varanus* species; however, its distribution suggests three potential scenarios: (1) *B. jubata* may be a large species complex; (2) *B. jubata* has been introduced across major biogeographical regions; or (3) *B. jubata* is a single, wide-ranging species. This last scenario is unlikely because other terrestrial vertebrates do not typically follow that distributional pattern across the same biogeographical barriers. Although the taxonomic relationships of this group are yet to be studied, *B. jubata* is currently categorized as Least Concern on the IUCN Red List (Ineich & Hallermann, 2010). This status was determined based on the species' distribution, abundance and ability to live in multiple habitat types. *Bronchocela jubata* is currently stated to range across South-east Asia and across Wallace's Line and Weber's Line (Fig. 2a). This range spans hundreds of islands, many of which have been in isolation for thousands or even millions of years. Based on this, and other species distributional patterns (Woodruff, 2010), it is unlikely that all populations of *B. jubata* belong to a single species.

The uncertainty regarding the distribution of *B. jubata* was highlighted in a review of the genus *Bronchocela* (Hallermann, 2005). It is possible that rare species are concealed under the blanket name *B. jubata* and traded in high numbers. Unlike

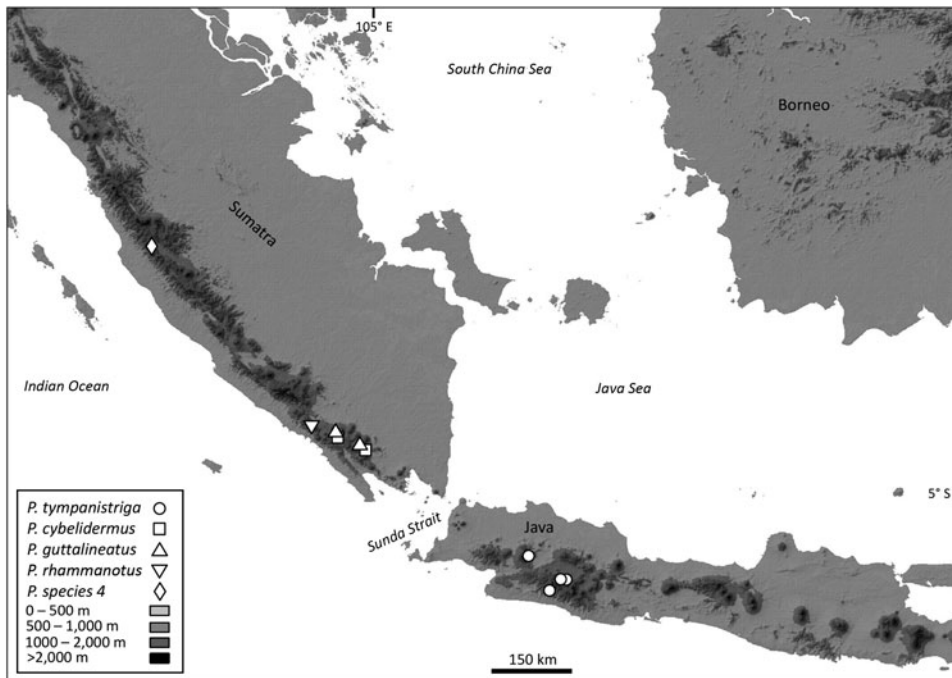


FIG. 3 Collection localities of *Pseudocalotes* spp., with species delimited based on morphological and genetic differentiation. Coordinates and specimen ID numbers are in Supplementary Table S1.

many of the *Varanus* species, *B. jubata* is not currently of concern for CITES and there is no available information on trade quotas for this species. Although it is not traded to the same extent as some *Varanus* species, *B. jubata* is sold regularly in the pet trade (authors, pers. obs.). *Bronchocela jubata* has not yet received the taxonomic evaluation necessary to uncover taxonomic relationships among populations.

Biogeographical barriers may affect the distribution of the lizards discussed here differently than they would other groups of reptiles, because dispersal capabilities vary among species. Furthermore, some populations of the study species may have been introduced by humans. However, these three examples highlight the main difficulties associated with status assessments across heterogeneous landscapes, and these challenges are applicable to other reptilian groups beyond the scope of this study.

Case study species assessment simulation

Pseudocalotes tympanistriga was previously thought to occur throughout the Barisan Mountain Range of Sumatra and the mountains of western Java. However, all specimens in the HerpNet database (HerpNet, 2015) are from various parts of west Java; none are confirmed from Sumatra.

During our herpetofaunal inventory we collected 45 *P. tympanistriga* individuals from Java (Fig. 3). From Sumatra we collected 18 *Pseudocalotes* spp. (Fig. 3), all similar to *P. tympanistriga* but with several morphological differences. After thorough examination we concluded that Sumatran specimens belonged to multiple cryptic species (Plate 1). The species *P. cybelidermus*, *P. guttalineatus* and *P.*

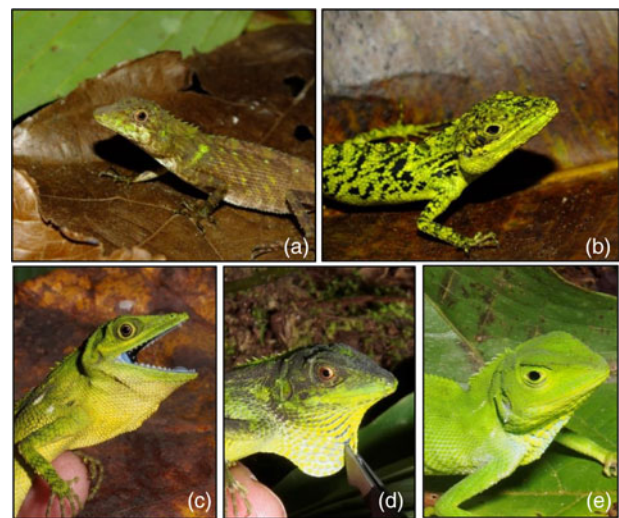


PLATE 1 The five superficially similar *Pseudocalotes* species, which we delimited before conducting an IUCN Red List assessment simulation for *P. tympanistriga*: (a) *P. rhammanotus*; (b) *P. tympanistriga*; (c) *P. species 4* (*Pseudocalotes baliomus*; unpubl. data); (d) *P. cybelidermus*; (e) *P. guttalineatus*.

rhammanotus have been described by Harvey et al. (2014), who are also in the process of describing a fourth species, *P. baliomus*. We found that all *Pseudocalotes* from Sumatra were only superficially similar to *P. tympanistriga*. Our phylogenetic analyses were in agreement with our morphological findings and clearly show genetic differentiation among the *Pseudocalotes* species (Fig. 4), and therefore we conclude that *P. tympanistriga* is restricted to Java and does not span the biogeographical barriers between Java and Sumatra. Using these data we parsed our simulations accordingly.

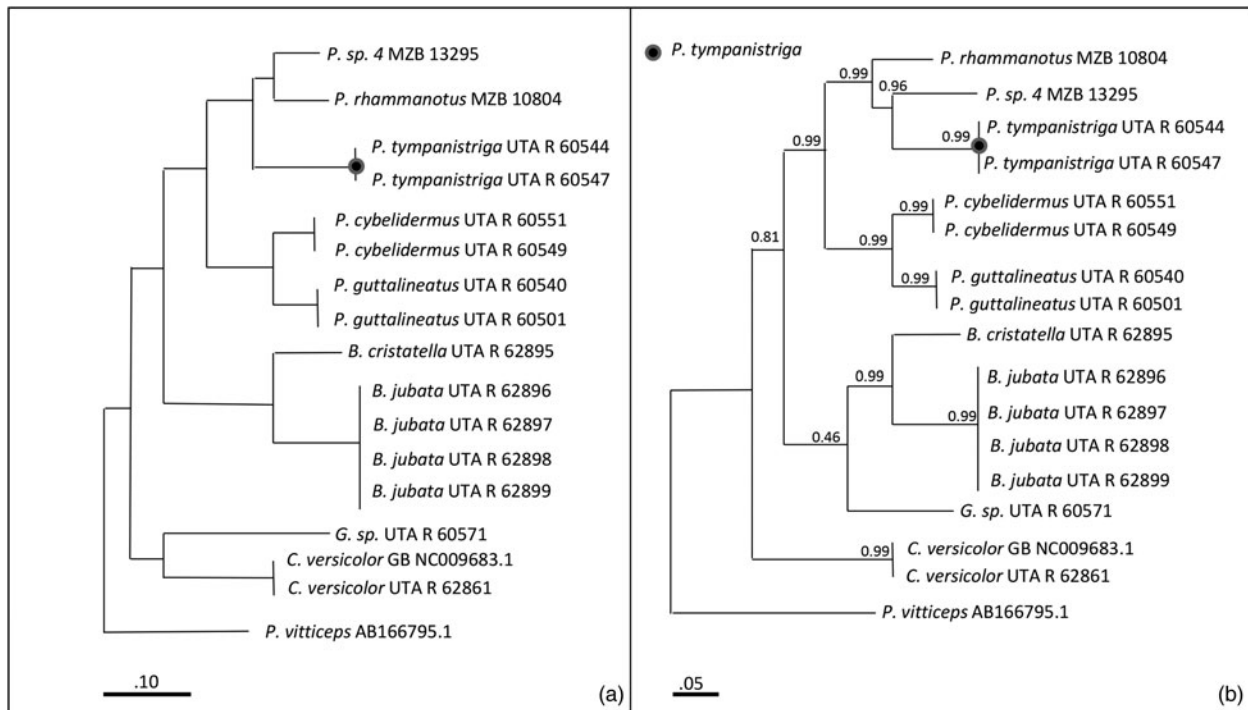


FIG. 4 (a) Results of unweighted pair group method with arithmetic mean analysis, which indicate that there are four distinct lineages of *Pseudocalotes* in addition to *P. tympanistriga*. The scale bar represents the pairwise genetic distance (percentage) between individuals. (b) Results of Bayesian phylogenetic analysis, which show similar relationships to (a) with some minor differences. The scale bar in the Bayesian analysis corresponds to the mean number of substitutions per site.

In our first Red List assessment simulation (Simulation 1) of taxonomically confirmed *P. tympanistriga* (Javan lizards only), *GeoCAT* calculated an EOO of 1,051 km² and recommended categorization as Endangered. The AOO calculated was 1,200 km², with a recommendation of Vulnerable status. In contrast, a hypothetical assessment that included all specimens (Javan and Sumatran) previously considered to be *P. tympanistriga* (Simulation 2) yielded different results. The outcome was an EOO of 38,605 km² and a recommendation of Near Threatened status (although with EOO of nearly 40,000 km² the status could even be considered to be Least Concern). The AOO was 5,000 km² and *GeoCAT* recommended a status of Least Concern based on that metric. These analyses simulate assessment before and after taxonomic verification (Fig. 5). Without accounting for biogeography we would have significantly underestimated the potential threat to *P. tympanistriga*. We only consider geographical range here to demonstrate our point; however, in a formal Red List assessment other sub-conditions would also be considered (e.g. levels of exploitation, fragmentation, evidence of decline; IUCN, 2001), which is beyond the scope of this work.

Species distribution modelling, *P. tympanistriga*

MaxEnt outputs for *P. tympanistriga* estimated the highest quality habitat (0.9–1) occurred across the mountains of West Java, two small islands east of Java and south-central

Sumatra. Medium-quality habitat (0.7–0.9) was distributed across Java and small neighbouring islands to the east of Java, throughout Sumatra, and in isolated patches in Borneo. Low-quality habitat (0.5–0.7) was distributed across Borneo, Java (and islands to the east), Sulawesi and Sumatra (Fig. 6). The area under the curve plot indicated a well-fit model with training data = 0.991 and test data = 0.993 (where a random prediction is 0.5; Pena et al., 2014). Without taxonomic evaluation the species distribution modelling approach would suggest that *P. tympanistriga* occurs across a wide range (throughout Sumatra), significantly overestimating range and EOO.

Discussion

We have provided evidence that complex biogeography may be leading to threatened species being categorized for the Red List under common species names, which can lead to extinction of unknown species. The problem is amplified when dealing with species of high economic value, particularly across an archipelagic nation such as Indonesia. On the islands of Java and Sumatra alone the majority of reptile species are categorized as Data Deficient, Not Evaluated (c. 50% combined) or Least Concern (c. 42%). Lizards and snakes represent the largest proportion of poorly studied reptiles in West Indonesia, and we suspect that a high number of species that have

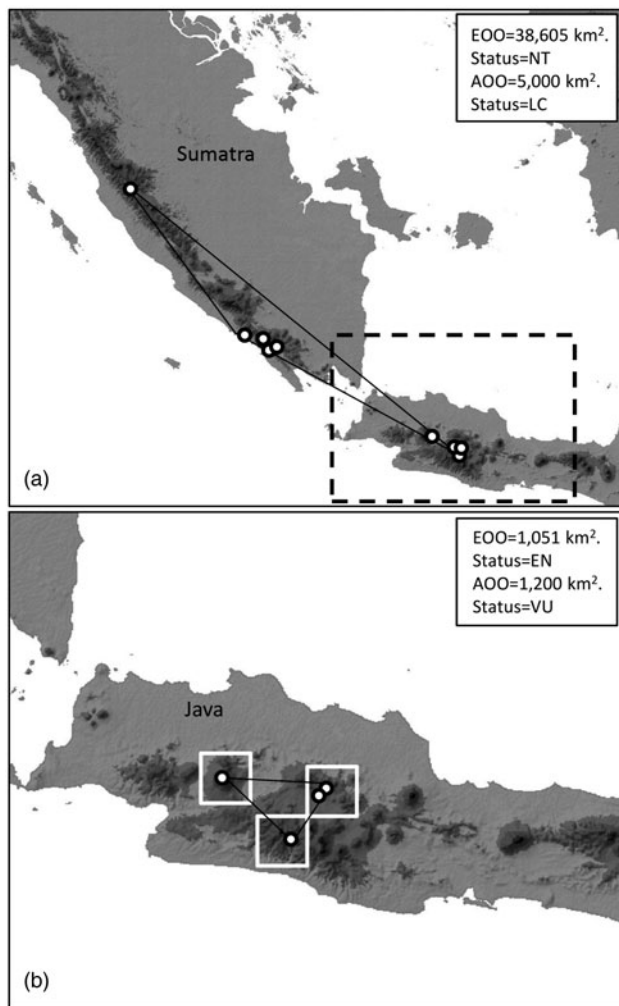


Fig. 5 The IUCN Red List assessment of *P. tympanistriga* produced using *GeoCAT* (a) prior to any taxonomic verification being conducted on *P. tympanistriga*, and (b) after taxonomic verification (i.e. only actual *P. tympanistriga* are included).

not yet been fully studied taxonomically are being categorized prematurely as Least Concern because they have large ranges across major biogeographical breaks. Potential examples among the snakes include the amethystine scrub python *Morelia amethystina*, which could comprise multiple distinct species, and Gunther's whip snake *Ahaetulla prasina*, which is distributed across a broad geographical range and multiple islands.

Had we assumed that all similar *Pseudocalotes* lizards from Java and Sumatra were *P. tympanistriga* we would have concluded a status of Least Concern or, at worst, Near Threatened. Our integrative analysis (considering biogeography beforehand) was sufficient to determine that *P. tympanistriga* is composed of multiple unrecognized species and that *P. tympanistriga* does not occur in Sumatra, thus diminishing the known EOO and AOO for the species. Our findings indicate that *P. tympanistriga* should actually be categorized as Vulnerable, or potentially

Endangered, and cryptic *Pseudocalotes* species on Sumatra require additional survey attention. Our *Pseudocalotes* dataset also shows that species distribution modelling methods can result in similarly biased outcomes, which exaggerate estimates of species range. Authors who suggest species distribution models as a tool for assisting in species status assessments emphasize that taxonomic verification is important (Pena et al., 2014; Syfert et al., 2014). However, it is clearly not trivial to ensure a single species rather than a species complex is being included in species distribution models, particularly across mountain or true island systems.

The Balai Konservasi Sumber Daya Alam (Natural Resources Conservation Agency) is currently responsible for setting provincial trade quotas for each species across Indonesia. However, these quotas are arbitrary if no scientific information is available. We suggest that Indonesia's trade quotas should be further divided across separately managed zones for species whose ranges cross major biogeographical boundaries, and for which there has been no recent taxonomic evaluation. We acknowledge this may be difficult to enforce in areas lacking the appropriate resources. Forensic techniques may be necessary to identify the origins of species being traded, as have been used for black-market ivory in Africa (Wasser et al., 2004) and monitor lizards in the Philippines (Welton et al., 2013). Genotyping methods will work for reptiles in Indonesia only if biological samples are collected from as many locations as possible so that genetic signatures can be determined in multiple geographical locations.

In addition to the challenges of biogeography and limited taxonomic sampling, researchers conducting conservation status assessments also have difficulties in obtaining the proper permits, with the bureaucratic process sometimes taking up to 1 year, and those with restricted funding may be unable to afford the process. Fees to enter National Parks to conduct research have also been raised considerably in recent years and permits are often difficult to obtain. Without permits some of the last patches of primary forest habitat are rendered inaccessible to researchers. Although countries follow strict guidelines to ensure that research is carried out appropriately, in some cases this leads to less research being conducted.

Taxonomic relationships are continually being revised, as are researchers' perceptions of where species' boundaries should be drawn. Therefore, it is unrealistic to suggest that species status assessments are put on hold until samples are collected from every possible locality, particularly in a large archipelagic nation such as Indonesia. We also acknowledge that categorization as Data Deficient may be harmful to species that are clearly under threat and require protection. However, there are many cases where species assessments need to be more conservative because inaccurate assessment can be more detrimental than helpful. This is particularly

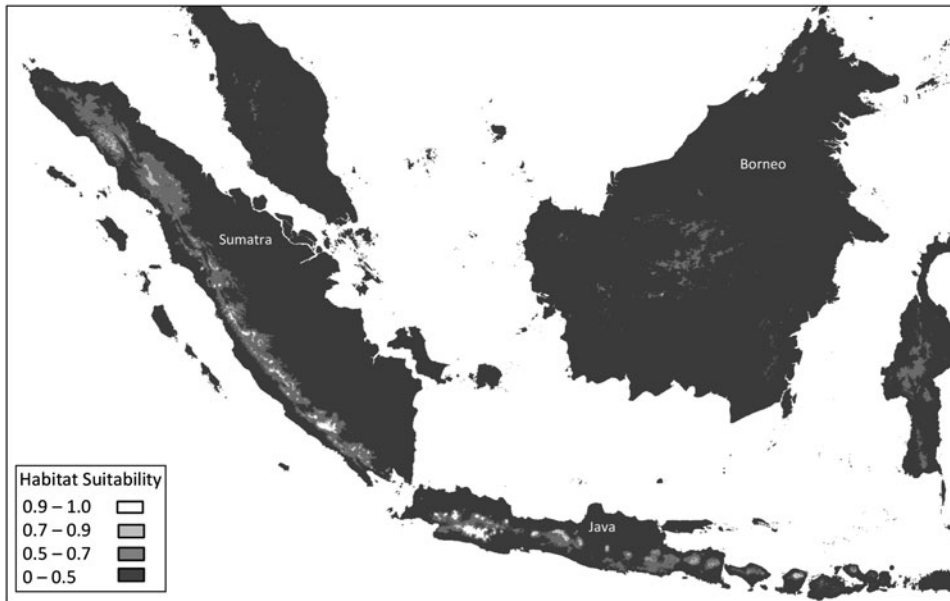


FIG. 6 Species distribution modelling output from *MaxEnt* analysis of *P. tympanistriga*, which significantly overestimates the range of the species. The bar on the left indicates probability of occurrence.

the case in regions with complex, heterogeneous landscapes and poorly sampled areas. We suggest prioritization of funding for broad-scale biological inventory in unexplored regions, which is critical for unravelling taxonomic relationships and, consequently, improving conservation efforts.

Acknowledgements

We are grateful to representatives of the Indonesian Institute of Sciences (LIPI) at the Museum Zoologicum Bogoriense (MZB) for facilitating the study of specimens from Indonesia, and the acquisition of field research permits, namely Boadi, M. Amir, R. Ubaidillah, I Sidik, and Ir. R. M. Marwoto. We thank the Ministry of Research and Technology of the Republic of Indonesia (RISTEK) for coordinating and granting research permissions. Pak S. Wahyono (RISTEK) provided assistance throughout the permitting process. RISTEK and LIPI reviewed and approved our fieldwork in Indonesia and provided export permits for specimens to the USA. W. Trilaksono, I. Sidik, and A. Ryanto provided laboratory assistance at MZB. Mr Widodo and Marwoto from the Faculty of Mathematics and Natural Sciences of Universitas Brawijaya (MIPA-UB) kindly provided logistical support. The Forestry Department of Indonesia kindly provided research permits. We thank the local communities for their support, advice and kindness during our travels. We thank the members of the field expeditions throughout Java and Sumatra: G. Barraza (Broward College), U. Arifin (Institut Teknologi Bandung), W. Trilaksono (MZB), C. Franklin, K. O'Connell, U. Smart, A. M. Kadafi, D. R. Wulandari, R. Darmawan, K. I. Nawie, A. Dharasa, and S. Pratassi (MIPA-UB). We thank Eric Smith and Carl Franklin for the photographs in Plate 1. This research was funded by a National Science Foundation grant (DEB-1146324) to E.N. Smith and M.B. Harvey.

References

- ACHARD, F., EVA, H.D., STIBIG, H.-J., MAYAUX, P., GALLEG0, J., RICHARDS, T. & MALINGREAU, J.-P. (2002) Determination of deforestation rates of the world's humid tropical forests. *Science*, 297, 999–1002.
- BACHMAN, S., MOAT, J., HILL, A.W., DE LA TORRE, J. & SCOTT, B. (2011) Supporting Red List threat assessments with GeoCAT: geospatial conservation assessment tool. *ZooKeys*, 150, 117–126.
- BENNETT, D., GAULKE, M., PIANKA, E.R., SOMAWEERA, R. & SWEET, S.S. (2010) *Varanus salvator*. *The IUCN Red List of Threatened Species 2010*: e.T178214A7499172. <http://dx.doi.org/10.2305/IUCN.UK.2010-4.RLTS.T178214A7499172.en> [accessed 18 May 2016].
- BENNETT, D. & SWEET, S.S. (2010) *Varanus indicus*. *The IUCN Red List of Threatened Species 2010*: e.T178416A7542350. <http://dx.doi.org/10.2305/IUCN.UK.2010-4.RLTS.T178416A7542350.en> [accessed 18 May 2016].
- BERNARDO, J. (2011) A critical appraisal of the meaning and diagnosability of cryptic evolutionary diversity, and its implications for conservation in the face of climate change. In *Climate Change, Ecology and Systematics* (eds T.R. Hodgkinson, M.B. Jones, S. Waldren & J.A.N. Parnell), pp. 380–438. Cambridge University Press, Cambridge, UK.
- BÖHM, M., COLLEN, B., BAILLIE, J.E.M., BOWLES, P., CHANSON, J., COX, N. et al. (2013) The conservation status of the world's reptiles. *Biological Conservation*, 157, 372–385.
- BROOKS, T.M., PIMM, S.L. & COLLAR, N.J. (1997) Deforestation predicts the number of threatened birds in insular Southeast Asia. *La Extension de las Deforestaciones Predice el Numero de Aves Amenazadas de Extincion en las Islas del Sureste de Asia*. *Conservation Biology*, 11, 382–394.
- BROWN, D.M., BRENNEMAN, R.A., KOEPLI, K.-P., POLLINGER, J.P., MILA, B., GEORGIADIS, N.J. et al. (2007) Extensive population genetic structure in the giraffe. *BMC Biology*, 5, 57.
- CEPF (CRITICAL ECOSYSTEM PARTNERSHIP FUND) (2004) Sundaland. <http://www.cepf.net/resources/hotspots/Asia-Pacific/Pages/Sundaland.aspx> [accessed 10 June 2015].
- CITES (2015) *CITES Trade Database*. <http://trade.cites.org/> [accessed 18 May 2016].
- CITES (2016) *The CITES Appendices*. <http://www.cites.org/eng/app/index.shtml> [accessed 18 May 2016].

- DAS, I. (2010) *A Field Guide to the Reptiles of Thailand & South-East Asia*. New Holland, London, UK.
- DAUDIN, F.M. (1802) *Histoire naturelle, générale et particulière, des reptiles: ouvrage faisant suite à l'Histoire naturelle générale et particulière, composée par Leclerc de Buffon, et rédigée par C.S. Sonnini*, vol. 3.
- DUMÉRI, A.M.C. & BIBRON, G. (1837) *Erpétologie générale, ou, Histoire naturelle complète des reptiles*, vol. 4. Librairie Encyclopédie Roret, Paris, France.
- GAULKE, M., SY, E., AFUANG, L., DUYA, M.R., DIESMOS, M. & GONZALEZ, J.C. (2009) *Varanus marmoratus*. *The IUCN Red List of Threatened Species 2009*: e.T169844A6681364. <http://dx.doi.org/10.2305/IUCN.UK.2009-2.RLTS.T169844A6681364.en> [accessed 18 May 2016].
- GENBANK. (2015) <http://www.ncbi.nlm.nih.gov/genbank/> [accessed 11 June 2015].
- GRAY, J.E. (1831) A synopsis of the species of Class Reptilia. In *The Animal Kingdom Arranged in Conformity with its Organisation by the Baron Cuvier with Additional Descriptions of all the Species Hitherto Named, and of Many before Noticed* (eds E. Griffith & E. Pidgeon), p. 481. Whittaker, Treacher and Co., London, UK.
- HALLERMANN, J. (2005) A taxonomic review of the genus *Bronchocele* (Squamata: Agamidae) with description of a new species from Vietnam. *Russian Journal of Herpetology*, 12, 167–182.
- HARVEY, M.B., HAMIDY, A., KURNIAWAN, N., SHANEY, K. & SMITH, E.N. (2014) Three new species of *Pseudocalotes* (Squamata: Agamidae) from southern Sumatra, Indonesia. *Zootaxa*, 3841, 211–238.
- HARVEY, M.B., O'CONNELL, K.A., BARRAZA, G., RIYANTO, A., KURNIAWAN, N. & SMITH, E.N. (2015) Two new species of *Cyrtodactylus* (Squamata: Gekkonidae) from the Southern Bukit Barisan Range of Sumatra and an estimation of their phylogeny. *Zootaxa*, 4020, 495–516.
- HERPNET (2015) <http://www.herpnet.org/> [accessed 11 June 2015].
- INEICH, I. & HALLERMANN, J. (2010) *Bronchocele jubata*. *The IUCN Red List of Threatened Species 2010*: e.T170378A6772283. <http://dx.doi.org/10.2305/IUCN.UK.2010-4.RLTS.T170378A6772283.en> [accessed 19 May 2016].
- ISKANDAR, D.T. & ERDELEN, W.R. (2006) Conservation of amphibians and reptiles in Indonesia: issues and problems. *Amphibian and Reptile Conservation*, 4, 60–87.
- IUCN (2001) 2001 IUCN Red List Categories and Criteria version 3.1. <http://www.iucnredlist.org/technical-documents/categories-and-criteria/2001-categories-criteria> [accessed 10 May 2015].
- IUCN (2010) Guidelines for using the IUCN Red List Categories and Criteria, version 8.1. <http://iucnredlist.org/documents/RedListGuidelines.pdf> [accessed 10 May 2015].
- IUCN (2015) *The IUCN Red List of Threatened Species*. <http://www.iucnredlist.org/> [accessed 18 March 2015].
- KOCH, A., AULIYA, M., SCHMITZ, A., KUCH, U. & BÖHME, W. (2007) Morphological studies on the systematics of South East Asian water monitors (*Varanus salvator* complex): nominotypic populations and taxonomic overview. *Mertensiella*, 16, 109–162.
- KOCH, A. & BÖHME, W. (2010) Heading east: a new subspecies of *Varanus salvator* from Obi Island, Maluku Province, Indonesia, with a discussion about the easternmost natural occurrence of Southeast Asian water monitor lizards. *Russian Journal of Herpetology*, 17, 299–309.
- KOCH, A., GAULKE, M. & BÖHME, W. (2010) Unravelling the underestimated diversity of Philippine water monitor lizards (Squamata: *Varanus salvator* complex), with the description of two new species and a new subspecies. *Zootaxa*, 2446, 1–54.
- KOCH, A., ZIEGLER, T., BÖHME, W. & AULIYA, M. (2013) Pressing problems: distribution, threats, and conservation status of the monitor lizards (Varanidae: *Varanus* spp.) of Southeast Asia and the Indo-Australian archipelago. *Herpetological Conservation and Biology*, 8, 1–62.
- LEACHÉ, A.D., CHONG, R.A., PAPPENFUSS, T.J., WAGNER, P., BOHME, W., SCHMITZ, A. et al. (2009) Phylogeny of the genus *Agama* based on mitochondrial DNA sequence data. *Bonner zoologische Beiträge*, 56, 273–278.
- LOHMAN, D.J., INGRAM, K.K., PRAWIRADILAGA, D.M., WINKER, K., SHELDON, F.H., MOYLE, R.G. et al. (2010) Cryptic genetic diversity in 'widespread' Southeast Asian bird species suggests that Philippine avian endemism is gravely underestimated. *Biological Conservation*, 143, 1885–1890.
- MANTHEY, U. (2008) *Agamid Lizards of Southern Asia*. Ed. Chimaira, Frankfurt, Germany.
- MARGONO, B.A., TURUBANOVA, S., ZHURAVLEVA, I., POTAPOV, P., TYUKAVINA, A., BACCINI, A. et al. (2012) Mapping and monitoring deforestation and forest degradation in Sumatra (Indonesia) using Landsat time series data sets from 1990 to 2010. *Environmental Research Letters*, 7, 034010.
- MARGULES, C.R. & PRESSEY, R.L. (2000) Systematic conservation planning. *Nature*, 405, 243–253.
- MIETTINEN, J., STIBIG, H.-J. & ACHARD, F. (2014) Remote sensing of forest degradation in Southeast Asia—aiming for a regional view through 5–30 m satellite data. *Global Ecology and Conservation*, 2, 24–36.
- MYERS, N., MITTERMEIER, R.A., MITTERMEIER, C.G., DA FONSECA, G.A.B. & KENT, J. (2000) Biodiversity hotspots for conservation priorities. *Nature*, 403, 853–858.
- NATUSCH, D.J.D. & LYONS, J.A. (2012) Exploited for pets: the harvest and trade of amphibians and reptiles from Indonesian New Guinea. *Biodiversity and Conservation*, 21, 2899–2911.
- NIJMAN, V., SHEPHERD, C.R., MUMPUNI & SANDERS, K.L. (2012) Over-exploitation and illegal trade of reptiles in Indonesia. *Herpetological Journal*, 22, 83–89.
- PENA, J.C.C., KAMINO, L.H.Y., RODRIGUES, M., MARIANO-NETO, E. & DE SIQUEIRA, M.F. (2014) Assessing the conservation status of species with limited available data and disjunct distribution. *Biological Conservation*, 170, 130–136.
- PHILLIPS, S.J., ANDERSON, R.P. & SCHAPIRE, R.E. (2006) Maximum entropy modeling of species geographic distributions. *Ecological Modelling*, 190, 231–259.
- SHEPHERD, C.R. (2000) Export of live freshwater turtles and tortoises from North Sumatra and Riau, Indonesia: a case study. *Chelonian Research Monographs*, 2, 112–119.
- SHEPHERD, C.R., SUKUMARAN, J. & WICH, S.A. (2004) *Open Season: An Analysis of the Pet Trade in Medan, Sumatra 1997–2001*. Traffic Southeast Asia, Petaling Jaya, Selangor, Malaysia.
- SODHI, N.S., KOH, L.P., BROOK, B.W. & NG, P.K.L. (2004) Southeast Asian biodiversity: an impending disaster. *Trends in Ecology & Evolution*, 19, 654–660.
- SYFERT, M.M., JOPPA, L., SMITH, M.J., COOMES, D.A., BACHMAN, S.P. & BRUMMITT, N.A. (2014) Using species distribution models to inform IUCN Red List assessments. *Biological Conservation*, 177, 174–184.
- THE REPTILE DATABASE (2015) <http://reptile-database.reptarium.cz/> [accessed 11 June 2015].
- WASSER, S.K., SHEDLOCK, A.M., COMSTOCK, K., OSTRANDER, E.A., MUTAYOBA, B. & STEPHENS, M. (2004) Assigning African elephant DNA to geographic region of origin: applications to the ivory trade. *Proceedings of the National Academy of Sciences of the United States of America*, 101, 14847–14852.
- WEIJOLA, V.S.A. & SWEET, S.S. (2010) A new melanistic species of monitor lizard (Reptilia: Squamata: Varanidae) from Sanana Island, Indonesia. *Zootaxa*, 2434, 17–32.

- WELTON, L.J., SILER, C.D., LINKEM, C.W., DIESMOS, A.C., DIESMOS, M.L., SY, E. & BROWN, R.M. (2013) Dragons in our midst: phyloforensics of illegally traded Southeast Asian monitor lizards. *Biological Conservation*, 159, 7–15.
- WELTON, L.J., TRAVERS, S.L., SILER, C.D. & BROWN, R.M. (2014) Integrative taxonomy and phylogeny-based species delimitation of Philippine water monitor lizards (*Varanus salvator* Complex) with descriptions of two new cryptic species. *Zootaxa*, 3881, 201–227.
- WOODRUFF, D.S. (2010) Biogeography and conservation in Southeast Asia: how 2.7 million years of repeated environmental fluctuations affect today's patterns and the future of the remaining refugial-phase biodiversity. *Biodiversity and Conservation*, 19, 919–941.
- WORLDCLIM (2015) [Http://www.worldclim.org/formats](http://www.worldclim.org/formats) [accessed 18 March 2015].
- ZIEGLER, T., BÖHME, W. & PHILIPP, K.M. (1999) *Varanus caerulivirens* sp. n., a new monitor lizard from the *V. indicus* group from Halmahera, Moluccas, Indonesia. *Herpetozoa*, 12, 45–56.
- ZIEGLER, T., BÖHME, W. & SCHMITZ, A. (2007) A new *Varanus* (Reptilia, Squamata, Varanidae) from Halmahera, Moluccas: the eleventh species of the *V. indicus* group. *Mitteilungen aus dem Museum für Naturkunde in Berlin. Zoologische Reihe, Supplement*, 83, 109–119.

Biographical sketches

KYLE J. SHANEY is interested in biogeography, conservation and wild-life ecology. ELIJAH WOSTL, AMIR HAMIDY and NIA KURNIAWAN are particularly interested in the biogeography and taxonomy of reptiles and amphibians. MICHAEL HARVEY and ERIC SMITH are interested in the biogeography and alpha taxonomy of reptiles and amphibians.