



Present bias for monetary and dietary rewards

Stephen L. Cheung¹ · Agnieszka Tymula¹ · Xueting Wang²

Received: 2 March 2021 / Revised: 21 February 2022 / Accepted: 22 February 2022 /
Published online: 18 March 2022
© Crown 2022

Abstract

Economists model self-control problems through time-inconsistent preferences. Empirical tests of these preferences largely rely on experimental elicitation using monetary rewards, with several recent studies failing to find present bias for money. In this paper, we compare estimates of present bias for money with estimates for healthy and unhealthy foods. In a within-subjects longitudinal experiment with 697 low-income Chinese high school students, we find strong present bias for both money and food, and that individual measures of present bias are moderately correlated across reward types. Our experimental measures of time preferences over both money and foods predict field behaviors including alcohol consumption and academic performance.

Keywords Self-control · Quasi-hyperbolic discounting · Present bias · Adolescents · Food rewards

JEL Classification C91 · D12 · D80 · D91

1 Introduction

Self-control is viewed in economics and other disciplines as a key individual characteristic responsible for effective self-regulation and personal goal attainment (Moffitt et al., 2011). Lack of self-control is thought to explain suboptimal choices and outcomes in many life domains, including financial decision making, health, and education. Given the importance of self-control, this individual trait is widely studied theoretically and empirically in many different fields (Duckworth et al., 2018).

In the economics literature, researchers usually model problems of self-control through time-inconsistent preferences that predict choices such as planning to go

✉ Xueting Wang
xueting.wang@rmit.edu.au

¹ School of Economics, The University of Sydney, Sydney, Australia

² School of Economics, Finance, and Marketing, RMIT University, Melbourne, Australia

on a diet starting next week but not going on the diet when next week arrives. Two well-known models that can capture such behaviours are the hyperbolic (Loewenstein & Prelec, 1992) and quasi-hyperbolic (Laibson, 1997) discount models. The latter model has attractive analytical features that have contributed to its popularity in economics (Frederick et al., 2002), and for this reason we focus on it in our paper. The underlying assumption of the model is that agents have a “present bias” toward current consumption, as the values of all future rewards are downweighted relative to rewards in the present (in addition to the standard exponential discounting of delayed rewards). Economists have applied quasi-hyperbolic discounting theoretically and empirically to explain problematic behaviours across a wide variety of domains such as financial decision making (Laibson et al., 1998), health behaviours (DellaVigna & Malmendier, 2006; Gruber & Köszegi, 2001; Schilbach, 2019), and work effort (Augenblick et al., 2015; Kaur et al., 2015).

In stark contrast to these diverse domains of application, most experimental research aimed at quantifying present bias has focused on a single specific reward type, namely money, and on samples from developed countries, in particular students at research universities. Further, most studies have used a cross-sectional design, which is not a true test of time inconsistency (Halevy, 2015; Read et al., 2012).¹ Only a longitudinal design permits a test of inconsistent planning, the key prediction of the quasi-hyperbolic model (O'Donoghue & Rabin, 1999). In this paper, we address each of these shortcomings that have characterised much of the existing literature. We next expand upon each of these points in turn.

In this paper, we estimate and compare time preferences for money, healthy foods, and unhealthy foods. We thus contribute to the literature by identifying the shape of time preferences for food rewards. While the quasi-hyperbolic model has been applied to explain behaviour across a variety of domains, several recent experimental studies find no present bias for money (Andersen et al., 2014; Andreoni & Sprenger, 2012a; Andreoni et al., 2015; Augenblick et al., 2015). An influential interpretation of these findings (Cohen et al., 2020) holds that experiments using money will fail to detect present bias if subjects engage in arbitrage: if subjects integrate experimental earnings with borrowing and savings opportunities outside the experiment, they will simply switch from sooner to later payment at the market interest rate, revealing linear utility and no present bias.

Clearly, to shed light on this issue it is necessary to compare present bias for monetary and non-monetary rewards. Augenblick et al. (2015) compare present bias for money and real effort, finding present bias for effort but not money. In their experiment, choices over effort (which is aversive) may be interpreted as revealing preferences toward leisure (a reward) if it is assumed that time not spent working for the experimenters is instead devoted to the consumption of leisure. However, since it is only the effort choice that is elicited and controlled for in the experiment, it is possible that this effort instead displaces another aversive use of time—such as domestic work, study, or an outside form of market employment—as opposed to leisure. This, in effect, is the real effort analogue to the potential confound of arbitrage

¹ A cross-sectional design compares, at a single point in time, preferences between two or more pairs of temporal prospects, separated by a common interval but preceded by different front-end delays.

in experiments using money. While previous studies (discussed next) have compared impatience and risk preference for monetary and direct consumption rewards, ours is the first to do so for present bias.² For now, we point out that if present bias is real but confounded by arbitrage in experiments using money, then we would expect to find present bias for food but not money. We return to the issue of arbitrage in the discussion.

With regard to other economic preferences, it has been found that people tend to be less patient (as distinct from present biased) for primary rewards than for money (Estle et al., 2007; Odum & Rainaud, 2003; Reuben et al., 2010; Tsukayama & Duckworth, 2010; Ubfal, 2016) but that risk preferences estimated for money and food rewards are essentially the same (Levy & Glimcher, 2012).³ These contrasting results highlight the importance of studying the consistency of preferences across domains separately for each economic preference. Moreover, within the domain of foods, unhealthy foods may be more tempting, triggering more present bias. It is thus also important to compare time preferences between healthy and unhealthy food.

A key feature of this paper is our sample of 697 relatively poor adolescents in China. Most previous studies have focused on the so called WEIRD subject pool (Henrich et al., 2010). WEIRD refers to samples drawn from populations that are Western, Educated, Industrialised, Rich and Democratic. One reason why carefully designed studies do not find present bias for money may simply be that the participants, having been admitted into top universities, did not have serious self-control problems to begin with.⁴ Indeed, several recent studies provide evidence that participants from developing countries show present bias for money (Balakrishnan et al., 2020; Banerji et al., 2018; Clot & Stanton, 2014; Giné et al., 2018; Janssens et al., 2017). Aycinena et al., (2020) find impatience for money and a preference to smooth payments over time in a sample of low-income Guatemalans, but do not find present bias. There is also evidence that certain clinical populations (e.g. prescription drug program enrollees and diabetes patients) show present bias for money (Abaluck et al., 2018; Mørkbak et al., 2017). Our paper contributes to the still relatively limited evidence on the time preferences of non-WEIRD samples.

² Other papers have identified self-control for consumption rewards without quantifying present bias. Read and Van Leeuwen (1998) asked participants to make choices between healthy and unhealthy snacks that they would receive in one week. When the appointed time came, participants were given an opportunity to change their choice. Carbone (2008) asked participants to decide which investment goods and activities (e.g. salad, textbook reading) and temptation goods and activities (e.g. ice cream, video games) to consume in two treatments in which consumption occurred either immediately or after a delay of four hours. Sadoff et al. (2020) used the demand for commitment to understand time-inconsistent behaviour for food choice. Each of these studies identify inconsistencies in the *types* of reward chosen for immediate delivery, as opposed to the *quantities*.

³ At the neural level, evidence suggests the existence of a “common neural valuation system” (Montague & Berns, 2002). In two meta-analyses, Bartra et al. (2013) and Clithero and Rangel (2013) find that brain regions that respond to both primary and secondary incentives overlap.

⁴ In a meta-analysis, Imai et al. (2021) suggest that university students tend to show stronger present bias than the general population. However, this finding is confounded by collinearity between the location of the study and the subject pool: laboratory experiments tend also to have student subjects, while field studies are more likely to recruit from the general population.

Our subjects differ not only on each of the dimensions of the WEIRD samples, but also in their age. Self-control established early in life is critical to personal development, yet few studies to date have estimated time preferences in children and adolescents.⁵ Research in psychology has shown that poor self-control in childhood is associated with a range of damaging behaviours, for example cigarette smoking. Moreover, children with greater self-control are significantly more likely to be from socioeconomically advantaged families (Moffitt et al., 2013).

To identify present bias we conduct a longitudinal experiment in schools. Halevy (2015) distinguishes three properties of standard preferences over temporal payments relative to a dated collection of such preferences. Stationarity implies that the ranking of two temporal payments at time t depends only on the difference between the two payments and their relative delay. The standard cross-sectional design is a test of this property. Time invariance implies that preferences are not a function of calendar time. Time consistency requires that the ranking of temporal payments does not change as the evaluation perspective changes from t to t' . Only a true longitudinal design can test for this property. Halevy (2015) finds that people can be time inconsistent and have stationary preferences at the same time, implying that the results of a cross-sectional design may be misleading.

Finally, conducting our experiment in school allows us to avoid selection into the study as well as attrition from it. Further, with access to administrative data from schools, we test the ability of our experimental measures to predict field outcomes such as academic performance.

697 Chinese high-school students participated in a five-week, incentivised longitudinal experiment using a modified version of the Convex Time Budget design (Andreoni & Sprenger, 2012a) to elicit individual preferences for three reward types: money, healthy food and unhealthy food. Subjects faced the same set of decisions, featuring the same reward amounts delivered on the same dates, at two points in time. In the first session, all choices involved rewards to be received at two dates in the future, while in the second session the sooner rewards were available today. Our design also incorporates a test of rationality in the form of violations of the Generalised Axiom of Revealed Preference (GARP). We conducted our experiment during regular class time and all 697 subjects completed both sessions, resulting in zero attrition.

We highlight several key findings. First, we provide the first estimates of present bias for consumption rewards. At the median, averaging over all trials, our subjects choose to receive 2% more food on the sooner payment date when the decision is made on that day than when it is made in advance. Our structural estimate of β for a representative agent is 0.69 for healthy food and for unhealthy food it is 0.71 (both are significantly less than one, but not significantly different from one another). Food consumption is highly consequential for people's health. Focusing

⁵ The seminal study investigating the lifelong impact of self-control is Walter Mischel's "marshmallow" test (Mischel & Ebbesen, 1970; Mischel et al., 1989), but see McGuire and Kable (2013) and Cohen et al. (2020) for discussion of confounds in the interpretation of this task as a measure of time preference. Sutter et al. (2013) investigate the link between children's and adolescents' time preference for money and field behaviours, however they find little evidence of present bias in their sample. Alan and Ertac (2018) and List et al. (2021) provide evidence on discounting (but not present bias) for adolescents.

on the amount consumed in the moment, a representative agent who has a healthy $BMI = 21$ and who participates in our experiment every week would become overweight in 4 years.

In contrast to some recent literature, we also find strong present bias for money. At the median, subjects choose to receive 4% more money on the sooner payment date when the decision is made on that day than when it is made in advance. Our structural estimate of β for a representative agent is 0.65 for money (also significantly less than one, as well as significantly different from our estimates for food).

Next, in contrast to previous findings in the domain of risk, we find differences in the curvature of utility between monetary and primary rewards. For money, we confirm recent findings in the time preference literature that instantaneous utility is at best only mildly concave (Abdellaoui et al., 2013; Andreoni & Sprenger, 2012a; Cheung, 2020). However, for both healthy and unhealthy foods we find strong evidence of concave utility (implying a preference to spread rewards evenly over time), more in line with conventional findings in the domain of risk.

At an individual level, we find significantly positive and moderate correlations between individual measures of present bias for all reward type pairs [$\rho \in (0.47, 0.60)$], as well as between individual measures of impatience [$\rho \in (0.59, 0.66)$]. We find even stronger correlations for a measure of the preference to smooth consumption over time [$\rho \in (0.81, 0.85)$].⁶ Together, these findings imply that conventional choices over money are moderately predictive of choices for food.

Finally, we find that our experimental measures of time preferences for both monetary and dietary rewards are predictive of subjects' field behaviours. Adolescents who make less patient choices for any reward type are more likely to drink alcohol and have lower grades. Moreover, those who are more present biased for money and healthy food are more likely to drink alcohol and have lower grades.

The paper proceeds as follows: Sect. 2 describes our experimental design, Sect. 3 explains our empirical approach, Sect. 4 presents the results, and Sect. 5 provides a discussion of our findings.

2 Experimental design

2.1 Subject pool

We collected data from 697 adolescents (331 girls; average age 16.1 years, standard deviation 0.15 years) from four public high schools in Guiyang City, China in February and March 2019. We randomly selected 16 classes in tenth and eleventh grades to participate in the study. The University of Sydney Human Research Ethics Committee and principals of each collaborating high school approved the study. Teachers of the participating classes permitted the experiments to be conducted in class during regular school hours. No students opted out, and all participating students and

⁶ For comparison, Levy and Glimcher (2011) find that the correlation between risk preferences for money and food was 0.65 (Spearman's rank test; $n = 65$; $p < 0.0001$).

their parents gave informed consent. The experiment was conducted in Mandarin (see Online Appendix 1 for an English translation of the instructions).

2.2 Task

Our experimental task is an extension of the convex time budget (CTB) design of Andreoni and Sprenger (2012a), which allows us to estimate subjects' utility and discounting parameters using data from a single task. To simplify this task, we implement a discrete version of the CTB based upon Andreoni et al. (2015).

Following the CTB framework, we provide options that allocate amounts of a reward between two payment dates subject to a future-value budget constraint:

$$(1 + r) \times c_t + c_{t+k} = 70,$$

where c_t denotes the amount of reward received at the sooner payment date t , c_{t+k} denotes the amount of reward received at the later payment date $t + k$, and r denotes the simple interest rate between the two dates. Between trials, we systematically vary the interest rate r keeping the future value of the endowment fixed at 70. The back-end delay k was always equal to three weeks.

Figure 1A shows a sample budget with an interest rate of 0%. In that case, regardless of which bundle a subject chooses, the amounts received on the two dates always sum to 70. To discretise this choice, we offer six evenly spaced options (shown as dots in Fig. 1A) along the budget line that a subject can choose from. There were always six options in every trial to keep choice difficulty constant. We exclude corner bundles [i.e. $(c_t, 0)$ and $(0, c_{t+k})$] from the choice set, as previous studies find that subjects who consistently choose corner bundles generate issues for structural estimation (Harrison et al., 2013). Another advantage of this procedure is that by forcing subjects to receive payments on both dates, we equalise transaction costs without the use of a show-up fee.

Figure 1B shows the corresponding decision screen for the 0% interest rate trial. As well as stating the amounts of a reward that are available on each payment date, we also visualise these quantities to facilitate comparison of the alternatives. The order of presentation of the six options on the screen was randomised for each subject, and the subject chose their most preferred bundle by clicking on it.

The other simple interest rates we use are -9%, 11%, 25%, 43%, 67% and 100% (see Fig. 2A for these seven budget sets). As the interest rate varies, a subject's choices trace out a price expansion path in terms of sooner and later rewards, with the optimal choices depending upon both utility curvature and discounting parameters.

We further enrich this framework by adding an additional seven decisions to allow for a test of the consistency of subjects' choices with the Generalised Axiom of Revealed Preference (Varian, 1982), as recommended by Chakraborty et al. (2017). We derive these additional choice sets from a present-value budget constraint:

$$c_t + \frac{1}{1+r} \times c_{t+k} = 56,$$

and in these trials we vary the interest rate while holding the present value of the endowment fixed at 56. The interest rates r for these additional trials are -13% , 0% , 13% , 25% , 38% , 50% , and 63% . Figure 2B shows the complete set of budgets used in our design. The two sets of budget lines intersect one another, allowing us to count the number of times a subject's choices violate GARP. The maximum number of GARP violations in this task is 91, while a random chooser would be expected to commit 12 violations. Note also that the trial with a 25% interest rate is presented twice (with other trials interleaved in between), allowing us to check for the consistency of subjects' choices when making the same decision twice.⁷

2.3 Timeline

Figure 3 shows the timeline of our five-week longitudinal experiment. In the first session in week one, subjects were presented with decisions where the sooner payment is in one week's time (hence in week two) and the later payment is in four weeks' time (hence in week five). In the second session in week two, the same subjects made the same sets of decisions over bundles of rewards received in weeks two and five, where the sooner payment is now available today.⁸ This longitudinal design identifies dynamic inconsistency by comparing initial allocations in week one (when all rewards are in the future) with subsequent allocations in week two (when the sooner reward is in the present). In each school, all sessions were conducted at the same time of day and on the same day of the week to keep other variables such as hunger constant; for logistical reasons, the timing of the sessions differed slightly between schools. Before making their decisions in week one, subjects were told that they would be making decisions again in week two, and that one out of all their decisions would be randomly selected at the end of session two to be realised for payment. In the third session which took place in week five, subjects did not make any decisions and only received rewards. The experiment dates were between 25 February and 29 March 2019. Over this period, there were no public holidays, school vacations or examinations.

After completing their decisions, subjects filled out a questionnaire which included demographic characteristics (in the first session) as well as current hunger and fatigue level,⁹ and appetite ratings (in both sessions); see Online Appendix 2 for an English translation of these questionnaires.

⁷ Our design also includes two choice sets with a 0% interest rate (but different sized budgets), allowing for an examination of the income effect.

⁸ Online Appendix 3 shows sample choice screens of the same trial as faced by a subject in week one and week two, respectively; everything is the same except the delays until the reward dates.

⁹ In each session, we asked subjects to report their hunger level on a scale from 1 (not hungry at all) to 7 (very hungry). The average score is 3 and it is not significantly different between the two sessions.

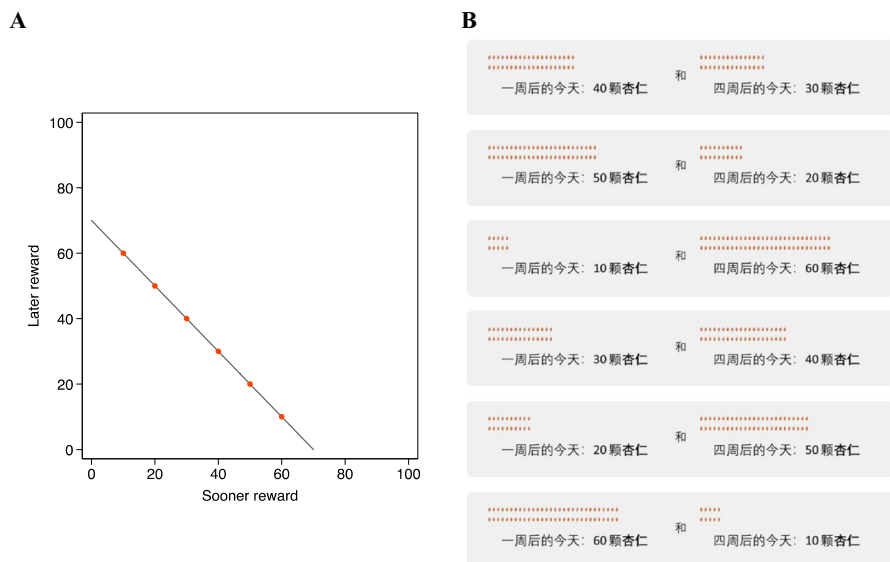


Fig. 1 Experimental design. **A:** Budget constraint with 0% interest rate. The six dots on the budget line indicate bundles available to the chooser. **B:** Decision screen for the 0% interest rate trial. Each row represents one bundle. On the left is the amount received on the sooner date and on the right is the later date. Dots represent the quantity of a reward to be received on that date. The six bundles are presented in random order for each participant

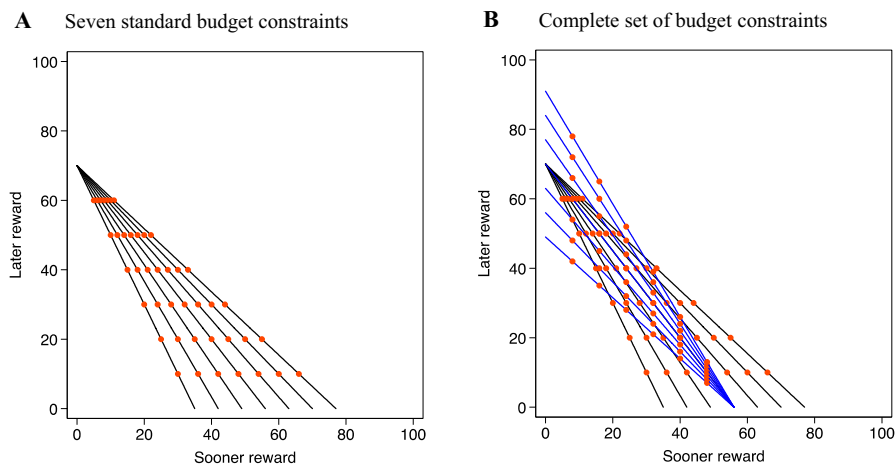


Fig. 2 Budget constraints

2.4 Reward types

To compare time preferences for monetary and food rewards, we use a within-subjects design. Each subject faced the same sets of choices for three different reward types: money, healthy food, and unhealthy food. Before making any choices in week

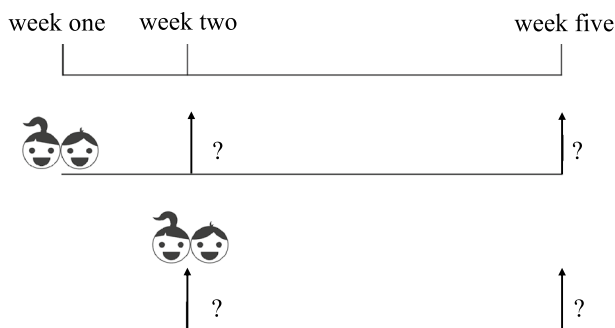


Fig. 3 Timeline of the experiment

one, we asked each subject to choose their preferred healthy food reward and preferred unhealthy reward from three alternatives in each category. We did this to cater for different tastes and hence ensure that all subjects made decisions for foods that they liked. For healthy food, the available options were pecans, raisins, and almonds. For unhealthy food, the options were Skittles, M&M's, and Lays. We chose these food rewards based on a pre-experiment survey of students' favourite snacks.

A single food item—one Skittle, one chip, one raisin, etc.—counted as one unit of the good. For example, in a 0% interest trial, subjects may choose between 40 Skittles in one week and 30 Skittles in four weeks, 20 Skittles in one week and 50 Skittles in four weeks, and so on. For money, the budget was halved such that one unit of money equated to RMB 0.5 to equalise the value of different reward types.

To summarise, in a given session each subject made 14 decisions for each of three reward types, with all 42 decisions repeated in two separate sessions. The order of rewards was either healthy-money-unhealthy or unhealthy-money-healthy. This order was randomly selected for each subject in the first session, and then held constant for the second session. Thus, choices over the two food rewards were always separated by choices over money. The experimental interface was programmed using Qualtrics.

2.5 Payment

At the end of the second session, one decision of each subject (from either the first or second session) was randomly selected as the one that would count for payment. If this was a money trial, the payments were made in cash. If it was a food trial, the subject received the amounts of food they had chosen. Sooner payments (both money and food) were delivered one hour after the second session. In week five, research assistants returned to the schools at the same time as in week two to deliver the later payments. To protect privacy, regardless of reward type, we used non-transparent zip-lock bags to pack subjects' payments. Therefore, monetary and food rewards were delivered to subjects in the same way.

Since we conducted the experiment during regular class hours in schools, the transaction costs to participate and receive payments are equalised throughout the study. Moreover, since subjects need to come to school anyway, we did not pay any additional show-up fee, and their compensation from the study was solely based on the choices that they made. Participants indicated a high level of trust in the experimental procedures, on average 5 on a scale from 1 (don't trust at all) to 7 (no doubt at all).

3 Empirical approach

We next outline two approaches we adopt to measure subjects' time preferences and utility curvature. Our first approach is to use descriptive measures of time preference and preference for smoothness that are based on simple proportions of rewards allocated to sooner versus later payment dates. These descriptive measures provide evidence on the behaviours we are interested in without needing to commit to specific structural assumptions. However, since descriptive measures cannot always cleanly distinguish between parameters, our second approach is to impose a quasi-hyperbolic discounted utility model (Laibson, 1997) and jointly estimate three parameters: the discount factor δ , present bias β , and utility curvature α . We find that these two approaches yield broadly consistent results.

3.1 Descriptive measures

3.1.1 Impatience

To investigate subjects' impatience, without confounding it with present bias, we consider decisions made in the first session (week one) which result in bundles of rewards received in weeks two and five. Since all rewards are received in the future, present bias does not play any role. Subjects who select a bundle with a larger proportion of rewards allocated to the sooner payment date (week two) relative to the later date (week five) can be classified as more impatient (equivalently less patient).

Let $c_{i,j}$ be the amount of a reward that a subject would receive in week i based on a decision made in week j . We define impatience for each of the 14 week one decisions ($Impatience_k, k \in [1, 14]$) for a given reward type as the proportion of the reward allocated to week two relative to the total amount of rewards in the chosen bundle, when the choice is made in week one:

$$Impatience_k = \frac{c_{2,1}}{c_{2,1} + c_{5,1}}$$

Then, for each reward type separately, to measure an individual's impatience we take the average of $Impatience_k$ for that reward type over all 14 decisions¹⁰:

¹⁰ We acknowledge that impatience defined in this manner may be confounded with utility curvature. We address this issue in our structural estimation.

$$Impatience = \frac{1}{14} \sum_{k=1}^{14} Impatience_k$$

By construction, this measure is bounded between zero (most patient) and one (most impatient), although in practice because we removed corner bundles from the choice sets the measure cannot go all the way to these limits in our design.

3.1.2 Present bias

Present bias occurs when an individual allocates a larger proportion of a reward to the sooner date when the sooner payment is immediate relative to when it is delayed, other things equal. To construct a descriptive measure of present bias, we first compare an individual decision made in week two when the sooner payment is today to the same decision made in week one when the sooner payment is delayed. We thus define present bias for a given decision scenario (*Present bias_k*, $k \in [1, 14]$) as the difference in the proportion of the reward allocated to week two when making a choice in week two compared to when making the same choice in week one:

$$Present\ bias_k = \frac{c_{2,2}}{c_{2,2} + c_{5,2}} - \frac{c_{2,1}}{c_{2,1} + c_{5,1}}$$

Then, for each reward type separately, to measure an individual's present bias we take the average of *Present bias_k* for that reward type over all 14 decision scenarios:

$$Present\ bias = \frac{1}{14} \sum_{k=1}^{14} Present\ bias_k$$

By construction, this measure is bounded between negative one (most future biased) and one (most present biased). Again, because we removed corner bundles from our choice sets, the measure does not go all the way to these limits in our design.

3.1.3 Preference for smoothness

In addition to their time preferences, a subject's choices in the experiment depend on the strength of their preference to smooth payoffs over time, as captured by the curvature of the utility function in a discounted utility model. A subject who has highly concave utility for a reward will have a strong preference for more mixed (temporally balanced) bundles, while one who has near-linear utility will tend to choose more extreme bundles near the corners of the budget set. To construct a descriptive measure of preference for smoothness, for a given decision trial ($k \in [1, 28]$), we calculate the difference between the sum of the amounts of a reward allocated to both dates and the absolute difference in those amounts, normalised by the sum of the amounts:

$$Smooth_k = \frac{(c_1 + c_2) - |(c_1 - c_2)|}{c_1 + c_2}$$

where c_1 represents the amount of a reward allocated to the sooner date and c_2 represents the amount of a reward allocated to the later date.

In the limiting case of a corner solution (where one of the c s is zero), the numerator collapses to zero and so $Smooth_k$ goes to zero. At the opposite extreme of perfect smoothing (such that $c_1 = c_2$), it is the absolute difference term that collapses to zero and so $Smooth_k$ goes to one.

Then, for each reward type separately, to measure an individual's preference for smoothness we take the average of $Smooth_k$ for that reward type over all 28 decision scenarios¹¹:

$$Smooth = \frac{1}{28} \sum_{k=1}^{28} Smooth_k$$

By construction, this measure is bounded between zero (no preference for smoothing) and one (maximum preference for smoothing), although in practice it does not go to these limits because we removed the corner bundles in our design.

3.2 Structural model

To conduct a parametric estimation of the discount factor, present bias, and utility curvature we assume a *CRRA* utility function and quasi-hyperbolic discount function (Laibson, 1997; O'Donoghue & Rabin, 1999). The instantaneous utility from experimental payments, c , is:

$$u(c) = \begin{cases} \frac{c^{1-\alpha}}{1-\alpha} & \alpha \neq 1 \\ \ln c & \alpha = 1 \end{cases} \quad (1)$$

The parameter α is *CRRA* utility curvature, where $\alpha = 0$ indicates linear utility, and $\alpha > 0$ ($\alpha < 0$) indicates concave (convex) utility. With a quasi-hyperbolic discount function, the intertemporal utility from experimental payments c_t received at date t , and c_{t+k} received at date $t + k$, is:

$$U_t(c_t, c_{t+k}) = u(c_t) + \beta^{1_{t=0}} \delta^k u(c_{t+k}) \quad (2)$$

The parameter β captures present bias. When $\beta = 1$, the discount function is exponential and there is no present bias, while $\beta < 1$ indicates present bias. The variable $1_{t=0}$ is an indicator of whether the sooner payment date, t , is immediate. The parameter δ is the weekly discount factor.

¹¹ There was no significant difference in our measure of preference for smoothness between the two sessions within the same reward type, thus we use data from both sessions to construct this measure.

Given the discrete nature of the choice sets in our design, we estimate this model using multinomial logit (MNL) regression (Cheung, 2015; Harrison et al., 2013) which compares the discounted utility of a subject's chosen bundle to that of each of the available alternatives. Conditional on candidate values of the parameters being estimated, we use Eqs. (1) and (2) to compute the discounted utility of each of the six alternative bundles. Then, given the bundle chosen by the subject, the multinomial logit probability of the observed choice is given by:

$$\Pr(\text{choice}) = \frac{e^{U^*/s}}{e^{U_1/s} + e^{U_2/s} + \dots + e^{U_6/s}},$$

where U^* represents the utility of the chosen bundle, s is a “noise” parameter, and U_i ($i \in \{1, 6\}$) represents the utilities of the six bundles in each trial. The estimates of α , β and δ are chosen to maximise the log-likelihood of the observed choices, with standard errors clustered at the level of the subject.

We report representative agent models for each reward type, estimated in STATA using both the MNL procedure as well as the nonlinear least squares (NLS) estimation technique used by Andreoni and Sprenger (2012a) for continuous CTB data. Unless noted, our conclusions are qualitatively the same using either estimation procedure. In addition, we report the summary statistics of individual-level MNL models estimated in MATLAB for each subject and reward type. For individuals with extreme choice patterns exhibiting little variance, individual estimation is unreliable. Since we set bounds on the individual estimates for each parameter, this problem expresses itself as one or more parameter estimates running to the bounds.¹² Despite this issue, we report results using individual estimates for all subjects, for two important reasons. First, this ensures consistency with our reporting of results using individual descriptive measures. Second, it allows us to evaluate the in- and out-of-sample prediction performance of our estimates under worst-case conditions. This confirms that even where our individual point estimates are not reasonable, they are nonetheless in line with our subjects' behaviour. As a result, these boundary estimates do not adversely affect our ability to correctly predict subjects' choices in Sect. 4.3 below (see Online Appendix 5 for details).

¹² We set bounds on the individual estimates of δ between 0.1 and 10, for β between 0.05 and 20, and for α between -10 and 10 . For money, there are 541 out of 697 subjects whose estimates do not come within 0.001 of any of these bounds, for healthy food there are 551, and for unhealthy food 532. For δ there are no subjects at the lower bound for any reward type, and between 20 (healthy food) and 36 (unhealthy food) at the upper bound corresponding to extreme patience. For β between 93 and 96 subjects are at the lower bound corresponding to extreme present bias, but there are also between 31 (money) and 49 (unhealthy food) at the upper bound corresponding to extreme future bias. Finally, for α no one is at the lower bound for any reward type, and at most 2 subjects are at the upper bound corresponding to extreme preference for smoothness.

4 Results

We present the results in four parts. We first establish that subjects' choices are consistent and rational. We then analyse their time preferences (impatience and present bias) and utility curvature using both descriptive measures and structural estimates as defined in the previous section. Next, we explore the correlation between time preferences for monetary and food rewards. We conduct both in- and out-of-sample prediction analyses to examine to what extent choices for money predict choices for food and vice versa. Finally, we study the relationship between our experimental measures of time preferences and field behaviours: BMI, smoking, alcohol consumption, and academic performance.

4.1 Consistency of subjects' choices with GARP

Table 1 shows the average number of GARP violations and Afriat's critical cost efficiency index (Afriat, 1967) separately for the three reward types and two sessions. For a given reward type and session, the maximum number of possible GARP violations in our design is 91. On average, subjects made 1.72 GARP violations for money, 1.71 for healthy food, and 1.84 for unhealthy food. The number of violations did not significantly differ between any of the reward types or within a reward type between sessions. For all reward types, the Afriat index is 0.98. Although this is significantly less than 1 ($p < 0.01$), it is close to 1 indicating that our subjects were highly rational. Moreover, their scores are higher than in previous studies with comparable age groups. Harbaugh et al. (2001) found Afriat's index to be around 0.95 for children aged between 7 and 11 years, and around 0.94 for undergraduates, both lower than in our study; their experiment design also involved discretised budget sets. Overall, we conclude that our subjects behaved in a highly rational manner allowing meaningful analysis of their preferences.¹³

4.2 Time preferences

When presenting our results for impatience, present bias and preference for smoothness, we proceed in the following order: we first present the descriptive measures for that preference, followed by structural estimates for a representative agent, and finally, the individual-level structural estimates.

¹³ We also conduct a simple consistency check using the interest rate of 25% that was presented twice for each reward in each session. On average, within a given session, 81.2% of subjects chose either the same or a neighbouring bundle in both trials, with 56.6% of subjects choosing the exact same bundle both times. Across all sessions and rewards, the number of subjects who chose the same or a neighbouring bundle was very similar, ranging between 80.0% and 83.1%. There was no significant difference between the two sessions or between reward types. There was also no significant difference in the percentage of rewards that subjects allocate to the sooner date between the first and second time they face this question within the same session (40.3% vs. 40.0%, $p = 0.34$). Overall, we conclude that our subjects show high levels of consistency.

4.2.1 Impatience

In Fig. 4, we plot the mean of $Impatience_k$ from choices made in session one as a function of the interest rate.¹⁴ As the interest rate increases, subjects choose to receive less on the sooner date, consistent with the law of demand. Figure 4 suggests that subjects were less patient for food than for money. At the median, averaging over all interest rates, subjects chose to receive 39% of their rewards on the sooner payment date for money, and 41% for healthy and unhealthy food (detailed data in Table 2). Wilcoxon signed-ranks test show that the differences in *Impatience* between money and healthy food, and between money and unhealthy food, are both significant ($p \leq 0.086$, see Table 3), but that the difference between healthy and unhealthy food is not significant ($p = 0.314$). Our finding that subjects tend to be less patient for primary rewards than for money is consistent with previous studies (Estle et al., 2007; Odum & Rainaud, 2003; Odum et al., 2006; Reuben et al., 2010; Tsukayama & Duckworth, 2010; Ubfal, 2016).

Turning to our MNL structural estimates for a representative agent (Table 4, top panel), we find that $\delta > 1$ for all three reward types ($p < 0.001$) which implies a negative discount rate. To understand this surprising finding, call a bundle back (front) loaded if in that bundle, a larger proportion of the reward is delivered at the later (sooner) date. In trials with a front-end delay (such that β is not implicated in choices) and an interest rate of zero, a negative discount rate would express itself through subjects selecting back-loaded bundles.¹⁵ Indeed, in zero-interest trials our subjects on average allocate 53.5% to the later date for money and 54% to the later date for healthy and unhealthy food, slightly more than an equal split of 50%. This behaviour is consistent with our estimate of $\delta > 1$.¹⁶ Nonetheless, only 10.33% of our subjects choose the most back-loaded bundle for money (10.47% for healthy food and 9.76% for unhealthy food).¹⁷

Finally, Table 5 shows summary statistics of individual MNL estimates of δ for the three reward types. We find that for around 75% of subjects the point estimate of

¹⁴ As there was no significant difference between the first and second trials for the repeated interest rate of 25%, we plot the average of these two trials in this graph.

¹⁵ In a zero-interest rate trial with front-end delay, an agent with linear utility and a 0% discount rate ($\delta = 1$) would be indifferent between all bundles. An agent with linear utility and a negative discount rate ($\delta > 1$) would choose the most back-loaded bundle. Finally, if an agent has concave utility and a negative discount rate she would choose an interior back-loaded bundle. This last case is what we observe: indexing the bundles from 1 (most front-loaded) to 6 (most back-loaded), the modal choice at zero interest with front-end delay is bundle 4 for all three reward types (see Online Appendix 4).

¹⁶ Bigoni et al. (2021) report an experiment to compare the sign of discounting for money and leisure. In their analogue to our zero-interest trial (with front-end delay) they observe a distribution of front- and back-loaded choices for both reward types (see their Fig. 6). For money, the modal and average choice pattern is front-loaded, consistent with positive discounting, whereas for leisure the opposite tendency is observed.

¹⁷ On the other hand, only 7.6% of subjects choose the most front-loaded bundle for money (5.31% for healthy food, 5.02% for unhealthy food). By contrast, in zero interest rate trials with a front-end delay, 73.2% of subjects in Andreoni and Sprenger (2012a) chose the most front-loaded allocation, 68.75% in the certainty condition in Andreoni and Sprenger (2012b), 66.67% in the certainty condition in Cheung (2015), 93.75% in Andreoni et al. (2015), and 63.33% in the money condition in Augenblick et al. (2015). Each of these studies involved monetary rewards, and estimated $\delta < 1$.

Table 1 Average number of GARP violations and Afriat's index for different reward types in each session

		Average no. of GARP violations	Afriat's index
1st session	Money	1.68	0.98
	Healthy	1.65	0.98
	Unhealthy	1.78	0.98
2nd session	Money	1.75	0.98
	Healthy	1.77	0.98
	Unhealthy	1.90	0.98

δ is greater than 1. The median of δ for money and unhealthy food is 1.01, and for healthy food it is 1.00. In Table 6, Wilcoxon signed-ranks tests indicate no significant differences in δ between any two reward types.

4.2.2 Present bias

In Fig. 5, we plot the proportion of the reward allocated to the sooner date against the interest rate, separately for each reward and session. Dots (squares) represent the proportion allocated to the sooner reward in the first (second) session and the solid (dashed) curve represents the predicted aggregate choice behaviour implied by our structural $\beta - \delta$ model in the first (second) session when we estimate reward-specific parameters of that model by MNL at an individual level and predict the choices that maximise each subject's utility in each trial.¹⁸ The difference between allocations in the two sessions represents present bias. The more time consistent subjects are, the closer the solid and dashed curves will be. The fact that the dashed curve is above the solid one for all three reward types indicates that our subjects choose to receive more on the sooner date when the sooner date is today compared to when it is in the future, with the distance between the curves indicating the strength of present bias.

Our descriptive measures (Table 2 and Fig. 5) indicate that present bias is strongest for money. The median of our descriptive measure of present bias for money is 0.04. That is, averaging over all trials, at the median subjects allocate 4% more money to the sooner date in the second session. The median for healthy and unhealthy food is 0.02. Using Wilcoxon signed-ranks test we confirm a stronger present bias for money than for each dietary reward ($p < 0.001$), and no significant difference in present bias between healthy and unhealthy food ($p = 0.363$) (Table 3).

Turning to our MNL structural estimates for a representative agent (Table 4, top panel), we find economically and statistically significant present bias for all rewards, consistent with our descriptive analysis. For money we find $\beta = 0.6574$ (std. err. = 0.0356, $H_0 : \beta = 1, p < 0.001$), for healthy food $\beta = 0.6959$ (std. err. = 0.0459, $H_0 : \beta = 1, p < 0.001$), and for unhealthy food $\beta = 0.7161$ (std. err. = 0.0425, $H_0 : \beta = 1, p < 0.001$). In line with our descriptive measures, β is smallest (present bias is strongest) for money.

¹⁸ See Sect. 4.3 below for further discussion of these predictions.

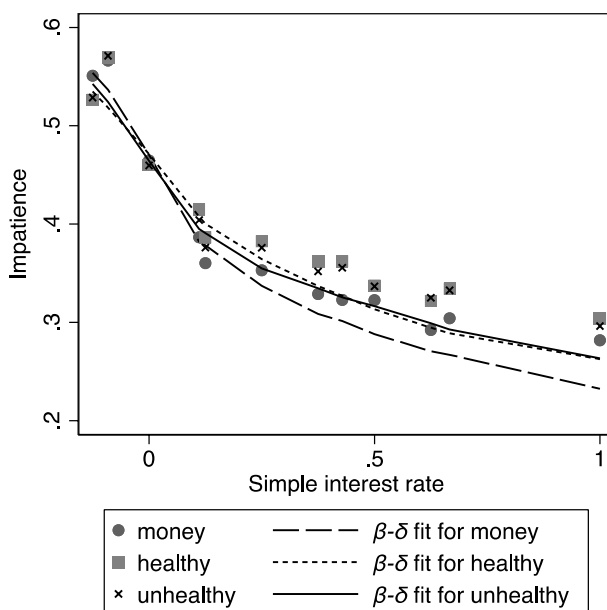


Fig. 4 Impatience for different reward types at different interest rates, based on choices in the first session. Dots (squares, crosses) represent the proportion allocated to the sooner reward in the first session for money (healthy food, unhealthy food). Long-dashed (short-dashed, solid) curves are the mean $\beta - \delta$ predictions using individual MNL estimates for money (healthy food, unhealthy food)

Table 2 Summary statistics of individual descriptive measures of impatience, present bias and preference for smoothness, by reward type

		10th	25th	50th	75th	90th
Impatience	Money	0.20	0.28	0.39	0.48	0.53
	Healthy	0.19	0.28	0.41	0.49	0.54
	Unhealthy	0.22	0.29	0.41	0.48	0.54
Present bias	Money	-0.14	-0.03	0.04	0.17	0.34
	Healthy	-0.15	-0.04	0.02	0.13	0.28
	Unhealthy	-0.15	-0.04	0.02	0.12	0.30
Preference for smoothness	Money	0.30	0.40	0.57	0.71	0.82
	Healthy	0.32	0.44	0.60	0.75	0.86
	Unhealthy	0.31	0.44	0.61	0.76	0.86

Finally in our individual MNL estimates (Table 5), we find present bias ($\beta < 1$) for around 65% of subjects, depending on the reward type. The median of β for money is 0.79, smaller than for healthy food (0.87) and unhealthy food (0.91). These results are directionally consistent with both the descriptive measures and structural estimates for a representative agent. Wilcoxon signed-ranks tests show that individual structural estimates of β differ significantly between money and unhealthy food and marginally for healthy and unhealthy food (Table 6).

Table 3 Wilcoxon signed-ranks tests of differences in impatience, present bias and preference for smoothness between reward types

	Money = healthy	Money = unhealthy	Healthy = unhealthy
Impatience	$p = 0.086^+$	$p = 0.003^{**}$	$p = 0.314$
Present bias	$p < 0.001^{***}$	$p < 0.001^{***}$	$p = 0.363$
Preference for smoothness	$p < 0.001^{***}$	$p < 0.001^{***}$	$p = 0.832$

⁺ $p < 0.1$, * $p < 0.05$, ** $p < 0.01$, *** $p < 0.001$

Table 4 Structural estimation results (standard errors in parentheses) using multinomial logit regression (MNL) and non-linear least squares regression (NLS) without background consumption

		Money	Healthy	Unhealthy
MNL	α	-0.0330 (0.0797)	0.3160 (0.0850)	0.2983 (0.0857)
	β	0.6574 (0.0356)	0.6959 (0.0459)	0.7161 (0.0425)
	δ	1.0809 (0.0142)	1.1198 (0.0234)	1.1142 (0.0212)
	noise	27.9009 (8.4884)	11.2921 (3.6022)	11.5058 (3.5440)
NLS	α	0.5994 (0.0211)	0.7072 (0.0258)	0.7202 (0.0280)
	β	0.8456 (0.0157)	0.8852 (0.0183)	0.8820 (0.0180)
	δ	1.0338 (0.0053)	1.0350 (0.0061)	1.0408 (0.0061)

Table 5 Summary statistics of individual MNL structural estimates of α , β and δ , by reward type

		10th	25th	50th	75th	90th
α	Money	-0.50	0.01	0.58	1.84	4.91
	Healthy	-0.41	0.08	0.91	2.34	5.27
	Unhealthy	-0.42	0.04	0.88	2.52	5.39
β	Money	0.05	0.34	0.79	1.15	5.45
	Healthy	0.05	0.32	0.87	1.23	8.43
	Unhealthy	0.05	0.39	0.91	1.45	10.07
δ	Money	0.83	0.95	1.01	1.25	2.33
	Healthy	0.82	0.93	1.00	1.24	2.57
	Unhealthy	0.79	0.94	1.01	1.28	2.86

Table 6 Wilcoxon signed-ranks tests of differences in the distributions of α , β and δ across reward types

	Money = healthy	Money = unhealthy	Healthy = unhealthy
α	$p < 0.001^{***}$	$p < 0.001^{***}$	$p = 0.702$
β	$p = 0.298$	$p < 0.001^{***}$	$p = 0.053^+$
δ	$p = 0.240$	$p = 0.636$	$p = 0.216$

⁺ $p < 0.1$, * $p < 0.05$, ** $p < 0.01$, *** $p < 0.001$

Our finding of significant present bias for money differs from recent studies,

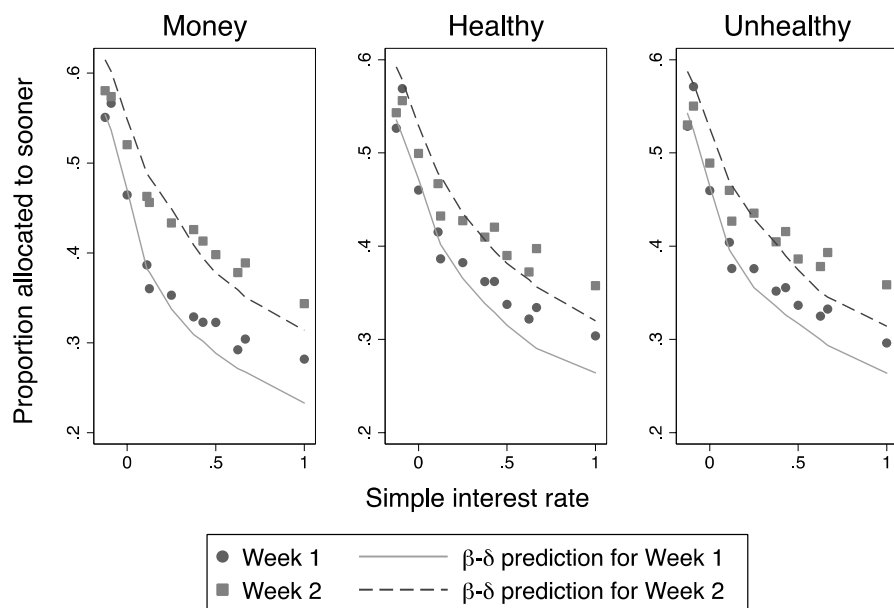


Fig. 5 Present bias for different reward types. Dots (squares) represent the proportion allocated to the sooner reward in week one (two) session. Solid (dashed) curves are the mean $\beta - \delta$ predictions using individual MNL estimates for week one (two) session. The difference between allocations in the week one and two sessions represents present bias

including Andreoni and Sprenger (2012a), Andreoni et al. (2015), Andersen et al. (2014) and Augenblick et al. (2015) who all conclude that there is no present bias for money. In the discussion, we compare our design (study takes place at school during school hours) and subject pool (adolescents from a relatively poor background) with these studies and discuss potential reasons for this difference.

We also find present bias for consumption goods which is a novel contribution of our study. Augenblick et al. (2015) estimate present bias for real effort, finding an aggregate estimate of $\beta = 0.888$. Our estimates thus indicate stronger present bias for food than for real effort.

4.2.3 Preference for smoothness/utility curvature

We find a stronger preference for smoothness for food rewards than for money. The median of our descriptive measure of preference for smoothness is around 0.60 for food and for money it is 0.57. A higher score for food indicates a stronger preference for more mixed bundles, and thus more concave utility for food rewards than for money. While the difference between money and food is highly significant ($p < 0.001$, Tables 2, 3), we do not find any difference in the preference for smoothness between healthy and unhealthy food.

Our MNL structural estimates for a representative agent (Table 4, top panel) are consistent with the descriptive analysis. The estimated utility curvature for money

is not significantly different from zero, consistent with findings in Andreoni and Sprenger (2012a), Abdellaoui et al. (2013), Andreoni et al. (2015), Augenblick et al. (2015) and Cheung (2020). For both healthy and unhealthy food, we estimate significantly concave utility, indicating that our subjects have a preference to smooth food rewards over time.¹⁹

Finally, our individual MNL estimates are also consistent with these conclusions. Table 5 shows that the median α for money is 0.58, and for food between 0.88 and 0.91. Given the *CRRA* functional form, this indicates more concave utility for food than for money. In line with the comparison using descriptive measures, individual estimates of α differ significantly between money and food ($p < 0.001$, Wilcoxon signed-ranks tests) but not between healthy and unhealthy food (Table 6).

4.3 Relationship between time preferences for money and food rewards

In summary, we have seen that subjects have different preferences for monetary and for food rewards. They are less patient, less present-biased, and have more concave utility for food than for money. In contrast, we find little systematic evidence of differences in any of these preferences between the two food reward types.

In this subsection we first use our descriptive measures to examine the extent to which time preferences for money and food are correlated within each individual. Using Spearman rank-order correlation analysis and descriptive measures of impatience, we find significantly positive, moderate correlations around 0.61 between individual impatience for all reward-type pairs (Fig. 6 panel A). This means that individuals who made less patient choices for money also made less patient choices for food, and those who made less patient choices for unhealthy food also made less patient choices for healthy food. Panel B of Fig. 6 illustrates the correlations between individual descriptive measures of present bias for different reward types. They are also significant and moderate at around 0.60. Preference for smoothness is a proxy for utility curvature. As shown in Fig. 6 Panel C, the correlation between any two reward types is significant and strong (around 0.82).

We next investigate to what extent individual MNL structural estimates for one reward type predict choices for the others. Since most studies in experimental economics rely on monetary incentives, it is important to understand the validity of extrapolating from such studies to different reward domains. We answer this question in two steps. First, we validate our structural estimation in sample. In other words, we ask to what extent our individual MNL estimates for a given reward type predict choices for the same individual and reward type. We then use this as a benchmark to assess out-of-sample prediction in the second step.

¹⁹ The alternative NLS estimation technique (Table 4, bottom panel) consistently indicates more concave utility for any given reward type compared to the corresponding MNL estimate. This follows from the fact that the NLS estimator interprets the chosen bundle as an interior point of tangency to the budget line, whereas MNL simply infers that it was the most preferred option from the discrete choice set. Because we remove corner bundles from the choice sets, an NLS estimate presumes that an excluded corner bundle would not have been more preferred to the nearest available interior bundle, whereas an MNL estimate allows that the corner bundle might well be more preferred.

In Fig. 7A, B, first row, we plot the observed choice distributions in the first and second sessions, separately for each reward type. Bundles 1 to 6 are indexed according to their relative position along the budget line, with 1 being the most front-loaded and 6 the most back-loaded bundle within any given choice set. We see that in the first session, the choice distribution is similar for the two food rewards, with bundle 3 being the modal choice. For monetary rewards, the modal choice is bundle 6 which allocates most to the later date, consistent with the finding that subjects are more patient for money than for food. In the second session, owing to present bias, the tendency to choose bundles 1 and 2 (allocating most to the sooner date) increases for all reward types. We also see that bundles 1 and 6 are less frequently chosen for food than for money, consistent with the finding that subjects have a stronger preference to smooth food rewards over time.

To examine how well our structural estimates explain an individual's choices for the same reward type (in-sample prediction), we calculate the utility of each bundle in each trial using each individual's reward-specific MNL estimates, and predict that the individual will choose the bundle with the highest utility in each trial. As illustrated in the second row of Fig. 7A, B, this predicts the general tendency to pick each bundle type quite well, although a Chi-squared test indicates that there is a significant difference between the observed and in-sample predicted choices ($p < 0.001$).

In Table 7, entries along the diagonal show the percentage of choices correctly predicted using the in-sample estimates. Across all three reward types, we correctly predict 57% of individual choices in both the first and second sessions.²⁰ This is our benchmark to compare the ability of estimates based on choices over money to predict choices over food.

For out-of-sample prediction, we can use individual MNL estimates for money to calculate the utility of each bundle in each food trial and predict that an individual will select the bundle with the highest utility. This procedure amounts to predicting the same choice in each food trial as predicted for the corresponding money trial, as summarised in the bottom left panel in Fig. 7A, B. We now correctly predict 45% of choices for food. Chi-squared tests confirm that the performance is indeed significantly worse when we use estimates from choices over money to predict choices over food ($p < 0.001$, Table 8).²¹

²⁰ If we instead use each individual's reward specific NLS estimates, pooling all three reward types we correctly predict 50.39% of individual choices in the first session and 51.92% of choices in the second (see Online Appendix 6 for the observed and predicted choice distributions). A Chi-squared test indicates that in-sample prediction performance using MNL estimates is significantly better than using NLS estimates ($p < 0.001$).

²¹ If instead we use preferences estimated from choices over food to predict money, we correctly predict 46% of money choices across the two sessions. This is significantly worse than the in-sample prediction ($p < 0.001$). If we use preferences estimated from choices over one food to predict the other food, we correctly predict 45% of choices across the two sessions. This is also significantly worse than the in-sample prediction ($p < 0.001$).

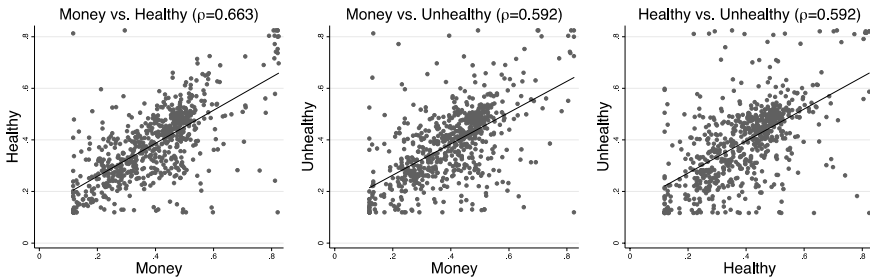
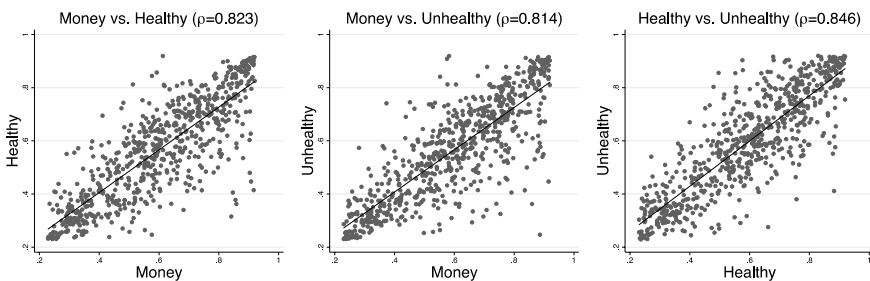
A Impatience**B Present bias****C Preference for smoothness / utility curvature**

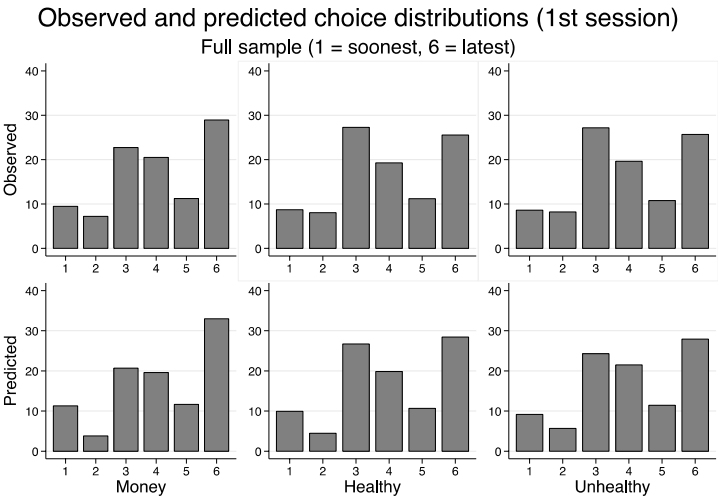
Fig. 6 Correlations of individual descriptive measures of impatience, present bias and preference for smoothness across reward types. The line is the best linear fit

4.4 Experimental measures and field behaviours

In this section, we assess the predictive power of our descriptive measures of impatience and present bias to explain smoking, alcohol consumption, body mass index (BMI), and academic performance. Information on smoking and alcohol consumption was collected through self-reports from all 697 adolescents. BMI and grades for the three core units (Chinese, Mathematics, and English) were obtained from the administrative records of the participating high schools.

Figure 8 summarises our data on BMI and academic performance. 59% of our subjects have BMI in the normal range ($18.5 \leq \text{BMI} \leq 24.9$), while 28% are underweight and 13% are overweight (mean BMI = 21.21, 75th percentile = 22.04, std.

A The first session



B The second session

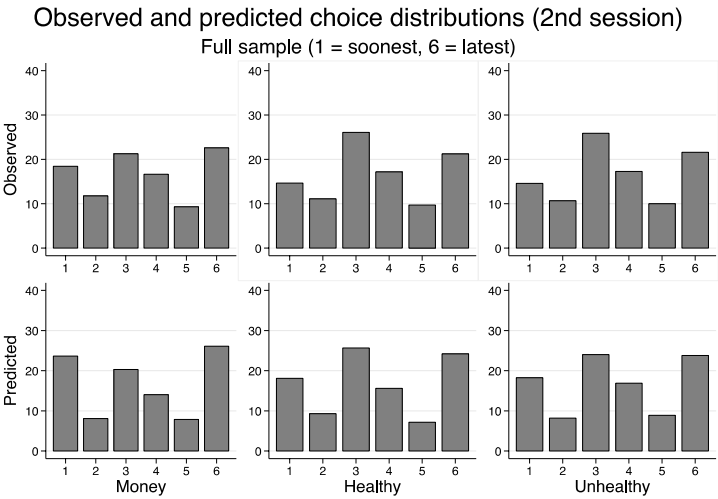


Fig. 7 In-sample prediction. Bars illustrate the proportion of choices of each bundle type (1 is the most front-loaded bundle and 6 is the most back-loaded). The first row shows the observed choice distributions. The second row shows the in-sample predicted choice distributions

Table 7 The percentage of correct predictions using individual MNL estimates of row type to predict choices of column type

	Money (%)	Healthy (%)	Unhealthy (%)
Money	57.7	44.6	45.1
Healthy	46.7	56.9	46.3
Unhealthy	45.6	44.7	56.4

Random choice at best can predict 16.5% of choices

Table 8 Chi-squared tests for out-of-sample prediction performance

	$Predict_m = Predict_h$	$Predict_m = Predict_u$
p -value	$p < 0.001^{***}$	$p < 0.001^{***}$

$Predict_m$ Prediction performance using estimates for money to predict choices on healthy food or unhealthy food. $Predict_h$ Prediction performance using estimates for healthy food to predict choices on healthy food. $Predict_u$ Prediction performance using estimates for unhealthy food to predict choices on unhealthy food

⁺ $p < 0.1$, * $p < 0.05$, ** $p < 0.01$, *** $p < 0.001$

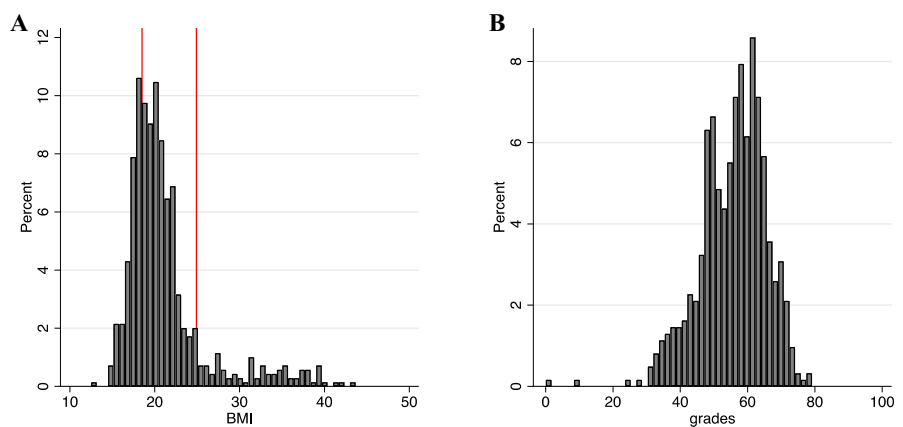


Fig. 8 Summary statistics for field behaviours. **A:** Histogram of BMI, calculated by dividing weight (in kilograms) by height (in metres) squared, obtained from schools’ administrative data. The area between the red vertical lines indicates the healthy range of BMI (18.5 to 24.9). **B** Histogram of academic performance (the average score for Chinese, Mathematics and English), obtained from schools’ administrative data

dev.=4.88). Academic performance in China is assessed on a scale from 0 to 100; we combine the grades in the three core units by averaging them. The average combined grade for a student in our sample is 55.7% (std. dev=9.79) and the highest is 79.2%, indicating medium to low academic performance in our sample. Very few subjects (7.17%) reported smoking cigarettes and 13.63% reported drinking alcohol.

To establish if there is any relationship between time preferences and field behaviour, we run twelve regressions. In each regression, one of the four field behaviours (dependent variable) is regressed on one of three pairs of standardised domain specific descriptive measures for impatience and present bias, controlling for subjects’ age, gender, self-reported wealth, hunger, fatigue, and trust in the experimenter. We use linear regression for continuous outcome variables (BMI and academic performance); for binary outcome variables (smoking and alcohol consumption) we use logit regression and report marginal effects. Table 9 summarises the effects of the domain specific preference measures; full results including the control variables are in Online Appendix 7. For example, all else being equal, a one standard deviation

increase in impatience (present bias) toward money is associated with an 4.57% (4.44%) increase in the likelihood of consuming alcohol.

The most prominent associations we find are between the domain-specific time preferences and grades. Adolescents who made less patient choices and showed stronger present bias for money, healthy food or unhealthy food had lower grades. Moreover, adolescents who were less patient and more present-biased for money and healthy food were more likely to drink alcohol. For alcohol and unhealthy food, we see the same effect of impatience, but the effect of present bias is smaller and not significant. Very few adolescents in our sample report smoking, which is likely why we only find one significant effect: subjects who were more present biased for money were more likely to smoke. The relationship between time preferences and BMI may be counter-intuitive: subjects who were less patient for money and unhealthy food and subjects who were less present biased for healthy food had lower BMI, but the effect is only at margin.

To summarise, our measures of patience and present bias have strong associations with alcohol consumption and academic performance. Time preferences for money and for food predict almost the same set of field behaviours equally well. We explore the implications of these findings in the discussion.

5 Discussion

The model of present-biased time preferences is one of the cornerstones of behavioural economics. In this paper, we provide evidence that fills some major gaps in empirical research on this model. Using data from an incentivised, within-subjects, longitudinal experiment in Chinese high schools, we estimate and compare present-bias, patience, and utility curvature for three types of rewards: money, healthy food, and unhealthy food. While researchers have applied the quasi-hyperbolic discount model to explain sub-optimal decision-making in a wide variety of domains, to date empirical evidence of present bias parameters has come predominantly from experiments using money, with many recent studies finding no present bias for money (Andersen et al., 2014; Andreoni & Sprenger, 2012a; Andreoni et al., 2015; Augenblick et al., 2015). This raises the possibility that either present bias is not the right behavioural model, or that it is not a feature of the samples and/or rewards used in these studies. While several studies (such as those conducted in developing countries) address the diversity of the sample, ours is the first to provide estimates of present bias for consumption rewards.

We find strong present bias for food rewards. Our conjecture that unhealthy food might be more tempting and thus trigger more present bias is not supported by the results. At the median, subjects in our experiment allocate on average 2% more food to the sooner date when that date is today rather than in the future. This is the same for both healthy and unhealthy food. Structural estimates yield a present-bias parameter of 0.69 for healthy food and 0.71 for unhealthy food (not significantly different between the two).

Table 9 Relationship between impatience and present bias (standardised as z score), and field behaviours

	Money	Healthy	Unhealthy
<i>BMI</i>			
Impatience z score	−0.5184* (0.2210)	−0.0883 (0.2167)	−0.3851 + (0.2028)
Present bias z score	−0.2351 (0.1972)	−0.3980* (0.1861)	−0.2724 (0.2099)
<i>Smoking</i>			
Impatience z score	0.0089 (0.0114)	0.0017 (0.0118)	0.0108 (0.0113)
Present bias z score	0.0218* (0.0094)	0.0033 (0.0095)	0.0101 (0.0098)
<i>Alcohol</i>			
Impatience z score	0.0457** (0.0140)	0.0362* (0.0143)	0.0442** (0.0138)
Present bias z score	0.0444** (0.0139)	0.0278* (0.0133)	0.0187 (0.0130)
<i>Grades</i>			
Impatience z score	−1.2549** (0.4092)	−0.8833* (0.4257)	−1.1656** (0.3922)
Present bias z score	−1.2560** (0.4111)	−1.0612* (0.4294)	−0.9527* (0.4135)
N	697	697	697

The table presents results of twelve regressions. In each regression, one of the field behaviours (dependent variable) is regressed on the standardised impatience and present bias measured in one domain. Unreported control variables are: age, gender, wealth, hunger, fatigue, and trust in the experimenters. BMI and Grades (the average grade for the three core units: Chinese, Mathematics and English) are continuous variables obtained from the administrative records of the participating high schools. Smoking and Alcohol are binary variables collected through self-reports from all subjects. BMI and Grades results are from OLS regressions. Smoking and Alcohol results are from Logit regressions and the marginal effects are reported. Standard errors clustered on individual subjects are in parentheses

+ $p < 0.1$, * $p < 0.05$, ** $p < 0.01$, *** $p < 0.001$

To give an indication of the consequences of such preferences, we calculated the caloric intake of a representative agent assuming they take part in the same experiment every week and compared it to the caloric intake of a time-consistent chooser (focusing on how much is chosen for consumption in the moment as opposed to total consumption from the experiment). Compared to time-consistent choosers, our representative agent would consume around 246 more calories each week from the experiment alone, resulting in 1.6 kg increase in weight per year. Holding all else constant, an average high-school student with $BMI = 21$ would become overweight in 4 years. This estimate should be regarded as a lower bound, as it does not incorporate other dietary choices that subjects make that may also involve temptation. In line with this intuition, Vadeboncoeur et al. (2015) found that university students can gain up to 4 kg in their first year of study, which coincides with the time in life when they start to take responsibility for their own nutrition.

Our finding of present bias for dietary rewards is a novel contribution to the literature. Nonetheless, a potential concern that arises over the use of food as rewards is satiation. We argue that the characteristics of our sample make this less of a concern. Our subjects are of low-to-medium socioeconomic status, and most have low to normal BMI, implying that they are unlikely to be satiated for all reward types used in our experiment. Indeed, for trials with a negative interest rate, the modal choice was the most front-loaded bundle that also contained the

largest total amount of a food, implying that our participants prefer more food to less.

Several prominent recent studies do not find present bias for monetary rewards. It is thus notable that we use the same rigorous preference elicitation methods but find present bias for money. As mentioned in the introduction, an influential interpretation of the absence of present bias for money is in terms of arbitrage. Under this hypothesis, subjects in a money discounting experiment will simply choose sooner payment in trials that offer less than the market interest rate, and later payment at higher interest rates. They will thereby reveal a discount rate equal to the market interest rate, linear utility, and no present bias.

Several aspects of our results are inconsistent with the arbitrage hypothesis. First, arbitrage predicts the choice of the most front-loaded bundle at a zero-interest rate in both sessions. Instead, in the first session our subjects choose mixed bundles at zero interest even for money. We estimate $\delta > 1$, implying a negative discount rate, for both the representative agent and around 75% of individuals. Our subjects thus display a clear regard for future monetary rewards even in the absence of market interest, and our estimate of their discount factor is not simply revealing a market interest rate. Second, the preference for smoothing that we observe in the choice of a mixed bundle at zero interest (in the first session) is also inconsistent with arbitrage, and is observed for all three reward types. Finally, since the market interest rate is orthogonal to the presence or absence of a front-end delay in the experiment, arbitrage cannot explain the shift toward more front-loaded bundles in the second session (Fig. 7A, B, top-left panels), resulting in our estimate of $\beta < 1$ for money.

Of course, subjects cannot engage in arbitrage if they lack access to market opportunities for borrowing and saving. For students in the age group that we study, it is likely they would have access to the market for saving, but not borrowing. In that case, participation in our experiment represents a rare opportunity to engage in borrowing, sometimes at a zero or even negative interest rate, which can be exploited by choosing a front-loaded allocation and then saving at a higher interest rate outside the experiment. Once again, this is inconsistent with our finding of patient choices at zero interest in the first session, resulting in an estimate of $\delta > 1$ for money.

Why then do we observe present bias for money where several previous studies did not? These contrasting findings may be due to differences in the subject pool as well as the procedures of the experiment. Instead of university students, our sample consists of Chinese adolescents of low-to-medium socioeconomic status. Our finding of present bias for money in this sample is consistent with the findings of most previous studies that were conducted in developing country settings.²² With regard to experimental protocols, we conducted our experiment at schools during regular school hours, whereas subjects in most laboratory studies had to take the initiative to sign up for the experiment and come to the lab on time. We argue that this may generate selection bias, as subjects who are able to show up to a previously scheduled experiment on time are likely to have good self-control. This selection bias will of course be compounded if the subjects are recruited from the students at a research

²² An exception is Aycinena et al. (2020), who in fact estimate $\beta > 1$ in a low-income developing country sample.

university, who have already exhibited self-control sufficient to place them at a top school.

Our findings regarding the curvature of utility are notable in light of recent controversy over the nature of utility in choice over time (Abdellaoui et al., 2013; Andreoni & Sprenger, 2012a; Cheung, 2020). These recent studies find that instantaneous utility for money in choice over time is far less concave than Bernoulli utility (also over money) in choice under risk, a finding that stands in sharp contrast to the long tradition in theory that assumes concave utility, and the strong psychological (Kahneman & Tversky, 1979) and biological foundations of S-shaped utility functions (Rayo & Becker, 2007; Robson & Whitehead, 2020; Tymula & Glimcher, 2020; Woodford, 2012). We complement these recent findings by further demonstrating that instantaneous utility for money is also less concave than it is for consumption rewards. This further underscores the importance of studying different reward domains rather than drawing strong inferences from the study of a single domain alone, namely money.

An important question in behavioural economics is to what extent can we extrapolate findings from studies involving monetary rewards to other domains of decision making. In our experiment, we use an identical method to elicit preferences of each subject for three reward types, allowing for a meaningful within-subject comparison of estimates across rewards. We find that the strength of correlation varies with the preference under consideration. For impatience, the correlations between money and food are moderate, consistent with Reuben et al. (2010), whereas for present bias the correlations (while significant) are weaker. We find strong correlation in utility curvature for money and food, consistent with Levy and Glimcher (2011). This last result is striking given that we also find a sharp divergence in the *magnitude* of the curvature parameter between money and foods.

Our finding that preferences are generally correlated across reward types is consistent with the existence of a common valuation mechanism in decision making. Indeed, neuroeconomic studies that measured brain function during valuation have concluded that food and money rewards recruit the same neural substrates to encode value and there are no unique activated areas as a function of reinforcer type (Chib et al., 2009; Kim et al., 2011; Valentin & O'Doherty, 2009). The same brain regions are also involved in valuation of aversive outcomes (electric shocks) (Delgado et al., 2011) and erotic stimuli (Sescousse et al., 2010). Our work extends this earlier work, by showing that while each of the preferences we study is correlated across reward types, present-bias is less correlated than risk attitudes and patience. Therefore, researchers should be more cautious in extrapolating (individual-level) present bias for money to other domains than in doing so for the other preferences.

Our data allow us to relate elicited preference measures to field behaviours including self-reported smoking and alcohol consumption, as well as BMI and academic performance obtained from schools' administrative records. We find that subjects who are less patient and more present biased for money and food are more likely to drink alcohol and have lower grades, leading to an overall less favourable health and economic outlook compared to subjects who are more patient and less present biased. Similar findings have been found by Sutter et al. (2013).

Finally, while we have framed our paper in the language of the quasi-hyperbolic discount model, we note that our findings are also compatible with other hyperbolic discounting models and may thus be interpreted as evidence of time-inconsistent preferences more generally.²³

Supplementary Information The online version contains supplementary material available at <https://doi.org/10.1007/s10683-022-09749-8>.

Acknowledgements We thank Marco Castillo, Gretchen Chapman, Keith Marzilli Ericson, Paul Glimcher, Joseph Kable, Daniel Read, Bram de Rock, and Anya Samek for valuable discussions, as well as participants in the Sydney Workshop on Experimental Economics and Theory, 2019 TIBER Symposium on Psychology and Economics, 2019 IAREP/SABE conference on Economic Psychology and Behavioural Economics, 2019 European Meeting of the Economic Science Association and 2019 Annual Meeting of the Society for Neuroeconomics. Cheung acknowledges support from the Australian Research Council, Grant Number: DP170102818. Tymula acknowledges support from the Australian Research Council, Grant Number: DE150101032. Wang acknowledges PhD fellowship support from the Australian Research Council Centre of Excellence for Children and Families over the Life Course (CE140100027, CE200100025). We are grateful to the principals and teaching staff at the participating high schools for making this project possible.

Funding Open Access funding enabled and organized by CAUL and its Member Institutions.

Data availability The replication material for the study is available at https://osf.io/6rygs/?view_only=6ca960ae2c8d4ec0a7be4cece073d002 (<https://doi.org/10.17605/OSF.IO/6RYGS>).

Declarations

Conflict of interest The authors have no conflict of interest to declare.

Open Access This article is licensed under a Creative Commons Attribution 4.0 International License, which permits use, sharing, adaptation, distribution and reproduction in any medium or format, as long as you give appropriate credit to the original author(s) and the source, provide a link to the Creative Commons licence, and indicate if changes were made. The images or other third party material in this article are included in the article's Creative Commons licence, unless indicated otherwise in a credit line to the material. If material is not included in the article's Creative Commons licence and your intended use is not permitted by statutory regulation or exceeds the permitted use, you will need to obtain permission directly from the copyright holder. To view a copy of this licence, visit <http://creativecommons.org/licenses/by/4.0/>.

References

- Abaluck, J., Gruber, J., & Swanson, A. (2018). Prescription drug use under medicare part D: A linear model of nonlinear budget sets. *Journal of Public Economics*, 164, 106–138.
- Abdellaoui, M., Bleichrodt, H., L'Haridon, O., & Paraschiv, C. (2013). Is there one unifying concept of utility? An experimental comparison of utility under risk and utility over time. *Management Science*, 59(9), 2153–2169.
- Afriati, S. N. (1967). The construction of utility functions from expenditure data. *International Economic Review*, 8(1), 67.
- Alan, S., & Ertac, S. (2018). Fostering patience in the classroom: Results from randomized educational intervention. *Journal of Political Economy*, 126(5), 1865–1911.

²³ For biological foundations of different discount models, see Kable and Glimcher (2007).

- Andersen, S., Harrison, G. W., Lau, M. I., & Rutström, E. E. (2014). Discounting behavior: A reconsideration. *European Economic Review*, 71, 15–33.
- Andreoni, J., Kuhn, M. A., & Sprenger, C. (2015). Measuring time preferences: A comparison of experimental methods. *Journal of Economic Behavior and Organization*, 116, 451–464.
- Andreoni, J., & Sprenger, C. (2012a). Estimating time preferences from convex budgets. *American Economic Review*, 102(7), 3333–3356.
- Andreoni, J., & Sprenger, C. (2012b). Risk preferences are not time preferences. *American Economic Review*, 102(7), 3357–3376.
- Augenblick, N., Niederle, M., & Sprenger, C. (2015). Working over time: Dynamic inconsistency in real effort tasks. *Quarterly Journal of Economics*, 130(3), 1067–1115.
- Aycinena, D., Blazsek, S., Rentschler, L., & Sprenger, C. (2020). Intertemporal choice experiments and large-stakes behavior. *ESI Working Papers*.
- Balakrishnan, U., Haushofer, J., & Jakiela, P. (2020). How soon is now? Evidence of present bias from convex time budget experiments. *Experimental Economics*, 23(2), 294–321.
- Banerji, A., Goto, J., Ishizaki, H., Kurosaki, T., Lal, K., Paul, S., & Tsuda, S. (2018). Entrepreneurship in micro and small enterprises: Empirical findings from resurveys in Northeastern areas of Delhi, India. *Discussion Paper Series*.
- Bartra, O., McGuire, J. T., & Kable, J. W. (2013). The valuation system: A coordinate-based meta-analysis of BOLD fMRI experiments examining neural correlates of subjective value. *NeuroImage*, 76, 412–427.
- Bigoni, M., Dragone, D., Luchini, S., & Prati, A. (2021). Estimating time preferences for leisure. *IZA Working Papers*.
- Carbone, E. (2008). Temptations and dynamic consistency. *Theory and Decision*, 64(2–3), 229–248.
- Chakraborty, A., Calford, E. M., Fenig, G., & Halevy, Y. (2017). External and internal consistency of choices made in convex time budgets. *Experimental Economics*, 20(3), 687–706.
- Cheung, S. L. (2015). Comment on “risk preferences are not time preferences”: On the elicitation of time preference under conditions of risk. *American Economic Review*, 105(7), 2242–2260.
- Cheung, S. L. (2020). Eliciting utility curvature in time preference. *Experimental Economics*, 23(2), 493–525.
- Chib, V. S., Rangel, A., Shimojo, S., & O’Doherty, J. P. (2009). Evidence for a common representation of decision values for dissimilar goods in human ventromedial prefrontal cortex. *Journal of Neuroscience*, 29(39), 12315–12320.
- Cliethero, J. A., & Rangel, A. (2013). Informatic parcellation of the network involved in the computation of subjective value. *Social Cognitive and Affective Neuroscience*, 9(9), 1289–1302.
- Clot, S., & Stanton, C. Y. (2014). Present bias predicts participation in payments for environmental services: Evidence from a behavioral experiment in Uganda. *Ecological Economics*, 108, 162–170.
- Cohen, J., Ericson, K. M., Laibson, D., & White, J. M. (2020). Measuring time preferences. *Journal of Economic Literature*, 58(2), 299–347.
- Delgado, M. R., Jou, R. L., & Phelps, E. A. (2011). Neural systems underlying aversive conditioning in humans with primary and secondary reinforcers. *Frontiers in Neuroscience*. <https://doi.org/10.3389/fnins.2011.00071>
- DellaVigna, S., & Malmendier, U. (2006). Paying not to go to the gym. *American Economic Review*, 96(3), 694–719.
- Duckworth, A. L., Milkman, K. L., & Laibson, D. (2018). Beyond Willpower: Strategies for reducing failures of self-control. *Psychological Science in the Public Interest*, 19(3), 102–129.
- Estle, S. J., Green, L., Myerson, J., & Holt, D. D. (2007). Discounting of monetary and directly consumable rewards. *Psychological Science*, 18(1), 58–63.
- Frederick, S., Loewenstein, G., & O’Donoghue, T. (2002). Time discounting and time preference: A critical review. *Journal of Economic Literature*, 1(2), 351–401.
- Giné, X., Goldberg, J., Silverman, D., & Yang, D. (2018). Revising commitments: Field evidence on the adjustment of prior choices. *Economic Journal*, 128(608), 159–188.
- Gruber, J., & Köszegi, B. (2001). Is addiction “rational”? Theory and evidence. *Quarterly Journal of Economics*, 116(4), 1261–1303.
- Halevy, Y. (2015). Time consistency: Stationarity and time invariance. *Econometrica*, 83(1), 335–352.
- Harbaugh, W. T., Krause, K., & Berry, T. R. (2001). GARP for kids: On the development of rational choice behavior. *American Economic Review*, 91(5), 1539–1545.
- Harrison, G. W., Lau, M. I., & Rutström, E. E. (2013). Identifying time preferences with experiments: Comment. *Center for the Economic Analysis of Risk Working Paper*.

- Henrich, J., Heine, S. J., & Norenzayan, A. (2010). The weirdest people in the world? *Behavioral and Brain Sciences*, 33(2–3), 61–83.
- Imai, T., Rutter, T. A., & Camerer, C. F. (2021). Meta-analysis of present-bias estimation using convex time budgets. *The Economic Journal*, 131(636), 1788–1814.
- Janssens, W., Kramer, B., & Swart, L. (2017). Be patient when measuring hyperbolic discounting: Stationarity, time consistency and time invariance in a field experiment. *Journal of Development Economics*, 126, 77–90.
- Kable, J. W., & Glimcher, P. W. (2007). The neural correlates of subjective value during intertemporal choice. *Nature Neuroscience*, 10(12), 1625–1633.
- Kahneman, D., & Tversky, A. (1979). Prospect theory: An analysis of decision under risk. *Econometrica*, 47(2), 263–292.
- Kaur, S., Kremer, M., & Mullainathan, S. (2015). Self-control at work. *Journal of Political Economy*, 123(6), 1227–1277.
- Kim, H., Shimojo, S., & O'Doherty, J. P. (2011). Overlapping responses for the expectation of juice and money rewards in human ventromedial prefrontal cortex. *Cerebral Cortex*, 21(4), 769–776.
- Laibson, D. (1997). Golden eggs and hyperbolic discounting. *The Quarterly Journal of Economics*, 112(2), 443–477.
- Laibson, D., Repetto, A., & Tobacman, J. (1998). Self-control and saving for retirement. *Brookings Papers on Economic Activity*, 1, 91–196.
- Levy, D. J., & Glimcher, P. W. (2011). Comparing apples and oranges: Using reward-specific and reward-general subjective value representation in the brain. *Journal of Neuroscience*, 31(41), 14693–14707.
- Levy, D. J., & Glimcher, P. W. (2012). The root of all value: A neural common currency for choice. *Current Opinion in Neurobiology*, 22(6), 1027–1038.
- List, J. A., Petrie, R., & Samek, A. (2021). How experiments with children inform economics. *SSRN Electronic Journal*.
- Loewenstein, G., & Prelec, D. (1992). Anomalies in intertemporal choice: Evidence and an interpretation. *The Quarterly Journal of Economics*, 107(2), 573–597.
- McGuire, J. T., & Kable, J. W. (2013). Rational temporal predictions can underlie apparent failures to delay gratification. *Psychological Review*, 120(2), 395–410.
- Mischel, W., & Ebbesen, E. B. (1970). Attention in delay of gratification. *Journal of Personality and Social Psychology*, 16(2), 329–337.
- Mischel, W., Shoda, Y., & Rodriguez, M. L. (1989). Delay of gratification in children. *Science*, 244(4907), 933–938.
- Moffitt, T. E., Arseneault, L., Belsky, D., Dickson, N., Hancox, R. J., Harrington, H. L., Houts, R., Poulton, R., Roberts, B. W., Ross, S., Sears, M. R., Murray Thomson, W., Caspi, A. (2011). A gradient of childhood self-control predicts health, wealth, and public safety. *Proceedings of the National Academy of Sciences of the United States of America*, 108(7), 2693–2698.
- Moffitt, T., Poulton, R., & Caspi, A. (2013). Lifelong impact of early self-control: Childhood self-discipline predicts adult quality of life. *American Scientist*, 101(5), 352–359.
- Montague, P. R., & Berns, G. S. (2002). Neural economics and the biological substrates of valuation. *Neuron*, 36(2), 265–284.
- Mørkbak, M. R., Gyrd-Hansen, D., & Kjær, T. (2017). Can present biasedness explain early onset of diabetes and subsequent disease progression? Exploring causal inference by linking survey and register data. *Social Science and Medicine*, 186, 34–42.
- O'Donoghue, T., & Rabin, M. (1999). Doing it now or later. *American Economic Review*, 89(1), 103–124.
- Odum, A. L., Baumann, A. A. L., & Rimington, D. D. (2006). Discounting of delayed hypothetical money and food: Effects of amount. *Behavioural Processes*, 73(3), 278–284.
- Odum, A. L., & Rainaud, C. P. (2003). Discounting of delayed hypothetical money, alcohol, and food. *Behavioural Processes*, 64(3), 305–313.
- Rayo, L., & Becker, G. S. (2007). Evolutionary efficiency and happiness. *Journal of Political Economy*, 115(2), 302–337.
- Read, D., Frederick, S., & Airoldi, M. (2012). Four days later in Cincinnati: Longitudinal tests of hyperbolic discounting. *Acta Psychologica*, 140(2), 177–185.
- Read, D., & Van Leeuwen, B. (1998). Predicting hunger: The effects of appetite and delay on choice. *Organizational Behavior and Human Decision Processes*, 76(2), 189–205.
- Reuben, E., Sapienza, P., & Zingales, L. (2010). Time discounting for primary and monetary rewards. *Economics Letters*, 106(2), 125–127.
- Robson, A. J., & Whitehead, L. (2020). *Adaptive cardinal utility*.

- Sadoff, S., Samek, A., & Sprenger, C. (2020). Dynamic inconsistency in food choice: Experimental evidence from two food deserts. *The Review of Economic Studies*, 87(4), 1954–1988.
- Schilbach, F. (2019). Alcohol and self-control: A field experiment in India. *American Economic Review*, 109(4), 1290–1322.
- Sescousse, G., Redouté, J., & Dreher, J. C. (2010). The architecture of reward value coding in the human orbitofrontal cortex. *Journal of Neuroscience*, 30(39), 13095–13104.
- Sutter, M., Kocher, M. G., Daniela, G. R., & Trautmann, S. T. (2013). Impatience and uncertainty: Experimental decisions predict adolescents' field behavior. *American Economic Review*, 103(1), 510–531.
- Tsukayama, E., & Duckworth, A. L. (2010). Domain-specific temporal discounting and temptation. *Judgment and Decision Making*, 5(2), 72–82.
- Tymula, A. A., & Glimcher, P. W. (2020). Expected subjective value theory (ESVT): A representation of decision under risk and certainty. *SSRN Electronic Journal*.
- Ubfal, D. (2016). How general are time preferences? Eliciting good-specific discount rates. *Journal of Development Economics*, 118, 150–170.
- Vadeboncoeur, C., Townsend, N., & Foster, C. (2015). A meta-analysis of weight gain in first year university students: Is freshman 15 a myth? *BMC Obesity*, 2(1), 22.
- Valentin, V. V., & O'Doherty, J. P. (2009). Overlapping prediction errors in dorsal striatum during instrumental learning with juice and money reward in the human brain. *Journal of Neurophysiology*, 102(6), 3384–3391.
- Varian, H. R. (1982). The nonparametric approach to demand analysis. *Econometrica*, 50(4), 945–973.
- Woodford, M. (2012). Prospect theory as efficient perceptual distortion. *American Economic Review*, 102(3), 41–46.

Publisher's Note Springer Nature remains neutral with regard to jurisdictional claims in published maps and institutional affiliations.