

CORRIGENDUM

On the taphonomy of the late Maastrichtian (Late Cretaceous) marine turtle *Allopleuron hofmanni* – CORRIGENDUM

R. Janssen, R.R. Van Baal & A.S. Schulp

DOI: <https://doi.org/10.1017/S001677460001104> Published online: 24 March 2014

In the above mentioned article (Janssen et al., 2011) the caption of Figure 1 was not complete and missed a reference citation.

The corrected caption and the figure are below

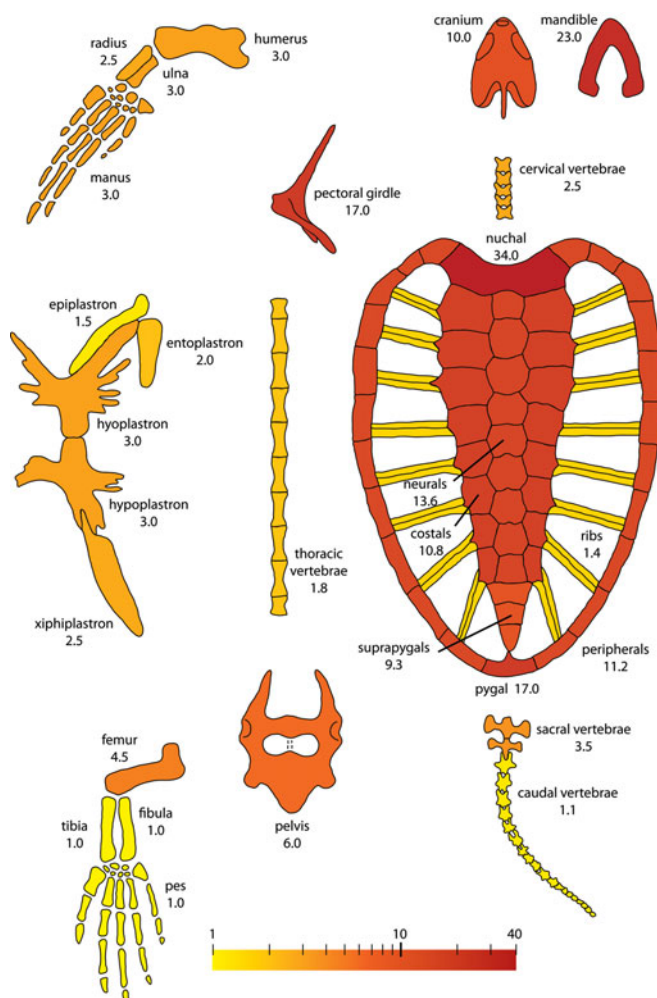


Fig. 1. 'Exploded view' of the skeleton of *Allopleuron hofmanni* with colour-coded abundances, corrected for the relative number of bone elements in the animal's skeleton. Carapace and plastron reconstructions by Mulder (2003, pls 28, 34); adapted.

The author apologises for these errors.

Reference

Janssen, R., Van Baal, R.R. & Schulp, A.S., 2011. On the taphonomy of the late Maastrichtian (Late Cretaceous) marine turtle *Allopleuron hofmanni*. Netherlands Journal of Geosciences / Geologie en Mijnbouw, 90(2–3): 187–196. doi:[10.1017/S0016774600001104](https://doi.org/10.1017/S0016774600001104)