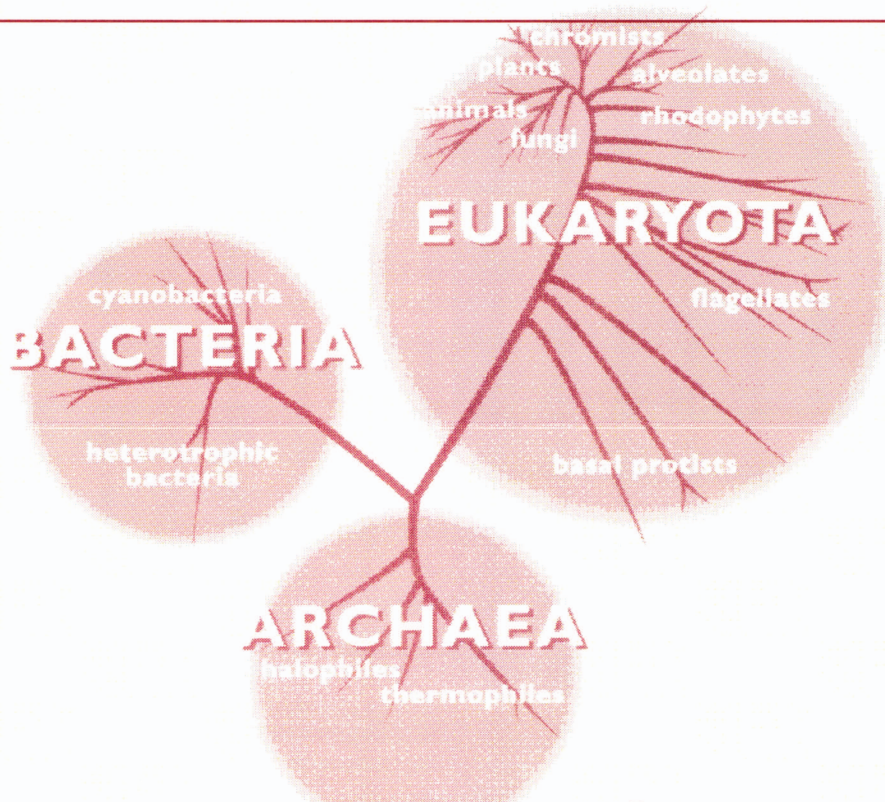

THE PALEONTOLOGICAL SOCIETY Special Publications

Volume 11

August 2002



EVOLUTION **INVESTIGATING THE EVIDENCE**

Judy Scotchmoor and Dale A. Springer, Editors

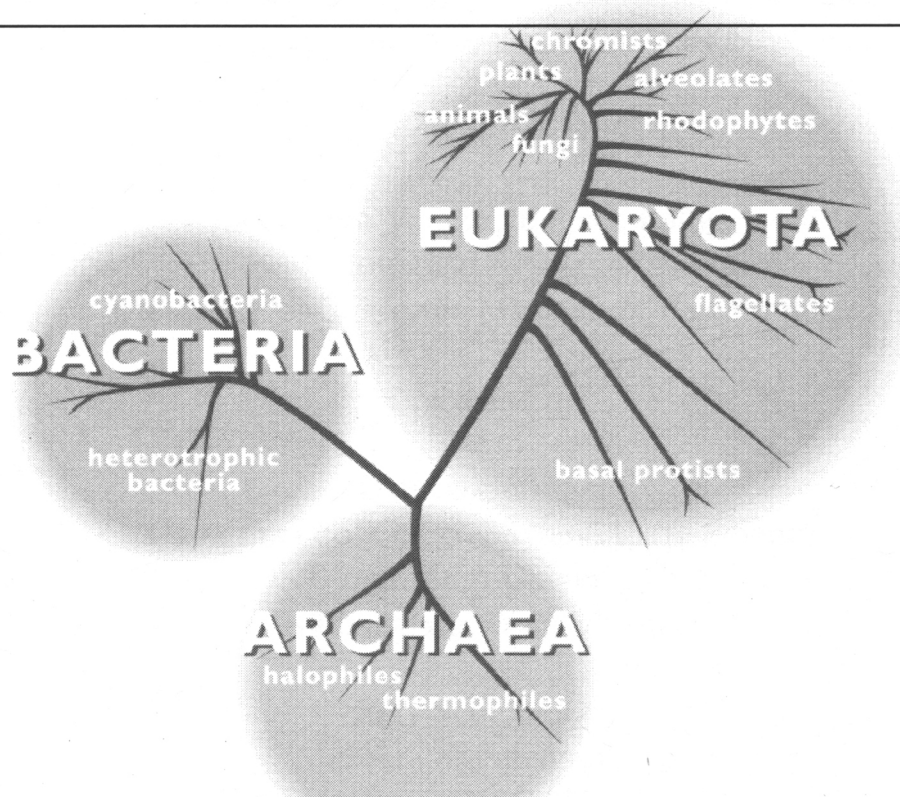
A Publication of The Paleontological Society
ISSN 1089-3326

THE PALEONTOLOGICAL SOCIETY

Special Publications

Volume 11

August 2002



EVOLUTION

INVESTIGATING THE EVIDENCE

Judy Scotchmoor and Dale A. Springer, Editors

A Publication of The Paleontological Society
ISSN 1089-3326

EVOLUTION: INVESTIGATING THE EVIDENCE

The Paleontological Society Special Publications—Volume 11

Judy Scotchmoor and Dale A. Springer, Editors

Presented as a Paleontological Society Short Course
at the Annual Meeting of the Geological Society of America,
Denver, Colorado, October 24, 1999.

In cooperation with

Society of Vertebrate Paleontology
The Paleontological Research Institution
University of California Museum of Paleontology

Convened by

Dale A. Springer
Department of Geography and Earth Science
Bloomsburg University
Bloomsburg, Pennsylvania

Judy Scotchmoor
Museum of Paleontology
University of California
Berkeley, California

Special Publications Editor

Russell D. White
Peabody Museum of Natural History
Yale University

The Paleontological Society Special Publications

A Publication of The Paleontological Society

Series Editor

Russell D. (“Tim”) White
Division of Invertebrate Paleontology
Peabody Museum of Natural History
Yale University
170 Whitney Ave., P.O. Box 208118
New Haven, CT 06520
<tim.white@yale.edu>

Copyright © 1999, 2002 by The Paleontological Society

All rights reserved. This entire publication may not be reproduced, stored in a retrieval system, or transmitted in any form or by any means, electronic, mechanical, photocopying, recording, or otherwise, without permission in written form from the Secretary of the Society. Diagrams, figures, tables, illustrations, and graphs may be reproduced by photocopying and distributing free of charge for educational purposes, if proper credit is given to the author(s) and the Society.

Printed by Yale University Reprographics & Imaging Services, New Haven, CT.

OFFICERS OF THE PALEONTOLOGICAL SOCIETY

For the year ending December, 2002

President

Patricia ("Trisha") H. Kelley, Wilmington, NC

Special Publications Editor

Russell D. ("Tim") White, New Haven, CT

President-Elect

William I. Ausich, Columbus, OH

Priscum Editor

Peter J. Harries, Tampa, FL

Past-President

Peter R. Crane FRS, Richmond, Surrey, UK

Education Coordinator

Dale A. Springer, Bloomsburg, PA

Secretary

Carl W. Stock, Tuscaloosa, AL

Student Representative

Gregory S. Herbert, Davis, CA

Treasurer

Thomas W. Kammer, Morgantown, WV

SECTION CHAIRS

Cordilleran Section

Jeff Myers, Monmouth, OR

Program Coordinator

Mark A. Wilson, Wooster, OH

North-Central Section Co-Chairs

Steve Lo Duca, Ypsilanti, MI

Councilors

Christopher G. Maples, Bloomington, IN

Stephen M. Holland, Athens, GA

Northeastern Section

C. Frederick Lohrengel, II, Cedar City, UT

Journal of Paleontology Co-Editors

Ann F. ("Nancy") Budd, Iowa City, IA

Brian J. Witzke, Iowa City, IA

Julia Golden, Iowa City, IA

Jonathan M. Adrain, Iowa City, IA

Rocky Mountain Section

Robert C. Thomas, Dillon, MT

South-Central Section

David M. Rohr, Alpine, TX

Paleobiology Co-Editors

William DiMichele, Washington, DC

John Pandolfi, Washington, DC

Southeastern Section

Michael Savarese, Ft. Meyers, FL

AUTHORS

WARREN D. ALLMON

Paleontological Research Institution
1259 Trumansburg Road
Ithaca, NY 14850
<wda1@cornell.edu>

RICHARD K. BAMBACH

Harvard Museum of Natural History
26 Oxford Street
Cambridge, MA 02138 USA
<rbambach@oeb.harvard.edu>

CHAIM BENJAMINI

Department of Geological and Environmental
Sciences
Ben Gurion University of the Negev
P. O. B. 653
Beer Sheva 84105
Israel
<chaim@bgumail.bgu.ac.il>

SANDRA J. CARLSON

Department of Geology
University of California
Davis, CA 95616
<carlson@geology.ucdavis.edu>

ALLEN G. COLLINS

Department of Biology
University of California, San Diego
La Jolla, CA 92093
<agc@paleobio.org>
<http://paleobio.org/agc/>

PETER R. CRANE

Royal Botanic Gardens, Kew
Richmond, Surrey TW9 3AB, England
<p.crane@rbgkew.org.uk>

STEPHEN J. CULVER

Department of Geology
East Carolina University
Greenville, NC 27858
<culvers@mail.ecu.edu>

DAVID W. DEAMER

Department of Chemistry and Biochemistry
University of California
Santa Cruz, CA 95064
<deamer@hydrogen.ucsc.edu>

CLAUS HEDEGAARD

Department of Genetics and Ecology
Institute of Biology
University of Aarhus
Bldg. 550, Ny Munkegade
8000 Aarhus C
Denmark
<claus.hedegaard@biology.aau.dk>

CAROLE S. HICKMAN

Department of Integrative Biology
Museum of Paleontology
University of California
Berkeley, CA 94720-4780
<caroleh@socrates.berkeley.edu>

JOHN P. HUNTER

Department of Anatomy
New York College of Osteopathic Medicine
New York Institute of Technology
Old Westbury, NY 11568
<jphunter@nyit.edu>

DAVID JABLONSKI

Department of Geophysical Sciences
University of Chicago
5734 South Ellis Avenue
Chicago, IL 60637
<djablons@midway.uchicago.edu>

SUSAN M. KIDWELL
Department of Geophysical Sciences
University of Chicago
5734 South Ellis Avenue
Chicago, IL 60637
<skidwell@midway.uchicago.edu>

JERE H. LIPPS
Department of Integrative Biology
Museum of Paleontology
University of California
Berkeley, CA 94720-4780
<jlipps@uclink.berkeley.edu>

CHARLES MARSHALL
Departments of Earth and Planetary Sciences
and Organismic and Evolutionary Biology
Harvard University
20 Oxford Street
Cambridge, MA 02138
<marshall@eps.harvard.edu>

FRANK K. (KEN) MCKINNEY
Department of Geology
Appalachian State University
Boone, NC 28608
<McKinneyFK@appstate.edu >

KEVIN PADIAN
Department of Integrative Biology
Museum of Paleontology
University of California
Berkeley, CA 94720-4780
<kpadian@socrates.berkeley.edu>

ROY E. PLOTNICK
Department of Earth and Environmental Sciences
University of Illinois at Chicago
Chicago, IL 60607
<plotnick@uic.edu>
[http://www.uic.edu/depts/geos/people/faculty/
plotnick.html](http://www.uic.edu/depts/geos/people/faculty/plotnick.html)

KAUSTUV ROY
Department of Biology
University of California, San Diego
La Jolla, CA 92093
<kroy@biomail.ucsd.edu>

JUDITH G. SCOTCHMOOR
Museum of Paleontology
University of California
Berkeley, CA 94709-0477
<jscotch@uclink4.berkeley.edu>

J. JOHN SEPKOSKI, JR. (deceased–1999)
Department of the Geophysical Sciences
University of Chicago
5734 South Ellis Avenue
Chicago, IL 60637

DALE A. SPRINGER
Department of Geography and Geosciences
Bloomsburg University
Bloomsburg, PA 17815-1301
<dspringe@husky.bloomu.edu>

STEVEN M. STANLEY
Department of Earth and Planetary Sciences
Johns Hopkins University
Baltimore, MD 21218
<stanley@jhu.edu>

JAMES W. VALENTINE
Department of Integrative Biology
Museum of Paleontology
University of California
Berkeley, CA 94720-4780
<jwvsossi@socrates.berkeley.edu>

ACKNOWLEDGMENTS

The volume editors, Judy Scotchmoor and Dale Springer, wish to thank all of the authors who contributed their time and considerable talents to the creation of this volume. Their dedication to scientific inquiry and science education is greatly appreciated. They also extend their gratitude to David K. Smith for his graphic design and to the teachers and scientists listed below whose thoughtful reviews have added greatly to the usefulness of this book. They thank the sponsors of this volume: The Paleontological Society, the Society for Vertebrate Paleontology, the Paleontological Research Institution, and the University of California Museum of Paleontology for their financial support and encouragement of this project. The help of Laura Skorina and David Weinreb is gratefully acknowledged by the series editor.

REVIEWERS

The following persons provided one or more reviews of articles appearing in this volume: Amanda Ash, Steve Bailey, Claudia Balach, Claudia Barreto, Anthony Cody, Carolyn Cover, Richard Davis, Jim Deffily, Diane Erwin, Cecile Famosom, Tony Fiorillo, Kathy France, Alan Goldstein, Pat Holroyd, Gabe Lyon, Roxanna Jackman, Al Janulaw, Jennifer Johnson, Thom Klinger, Joanne Kluga, Margaret Lewis, Elizabeth McGee, George McGhee, Marg McKinney, Jay Michalsky, Gary Rosenberg, Mike Sandy, Ed Silcox, David K. Smith, Mark Springer, Mark Stefanski, Suzanne G. Strait, Rob Thomas, and Colleen Whitney.

EVOLUTION: INVESTIGATING THE EVIDENCE

Judy Scotchmoor and Dale A. Springer, Editors

| Contents | Page |
|--|-------------|
| Preface | v |
| <i>Patricia H. Kelley and William I. Ausich</i> | |
| Introduction | vii |
| <i>Dale A. Springer and Judy Scotchmoor</i> | |
| Section 1: Evolution In Perspective | |
| This is Science! | 3 |
| <i>Jere H. Lipps</i> | |
| The Meaning of Evolution | 15 |
| <i>Richard K. Bambach</i> | |
| The Age of Things Found in the Earth | 31 |
| <i>Frank K. McKinney</i> | |
| Section 2: Organizing the Data | |
| The Nature of the Fossil Record | 49 |
| <i>Susan M. Kidwell and J. John Sepkoski, Jr.</i> | |
| Biological Classification—Organizing Organisms | 63 |
| <i>Claus Hedegaard</i> | |
| Evolution and Systematics | 77 |
| <i>Sandra J. Carlson</i> | |
| Missing Links in the History of Life | 97 |
| <i>Charles R. Marshall</i> | |
| Section 3: Evidence For Evolution | |
| Perceiving Change with Continuity: Morphologic Patterns in the Fossil Record Using an Analogy | 121 |
| <i>Warren D. Allmon</i> | |

| | |
|---|-----|
| Evolution Caught in the Act: Evidence from Microfossil Morphology | 127 |
| <i>Stephen J. Culver</i> | |
| Major Patterns in Botanical Diversity | 139 |
| <i>Peter R. Crane</i> | |
| Patterns of Change in Fossil Invertebrates | 151 |
| <i>Warren D. Allmon</i> | |
| Evolution at All Scales in the Vertebrate Fossil Record | 165 |
| <i>John P. Hunter</i> | |
| How Did It All Begin?: The Self-Assembly of Organic Molecules and the Origin of Cellular Life | 179 |
| <i>David W. Deamer</i> | |
| Molecules and Evolutionary History | 195 |
| <i>Allen G. Collins</i> | |
| Origination, Evolutionary Radiation, and Extinction in the Modern World: The Story of Partulid Tree Snails | 211 |
| <i>Carole S. Hickman</i> | |

Section 4: Mechanisms of Evolution

| | |
|---|-----|
| Plate Tectonics and Evolution | 229 |
| <i>David I. Jablonski</i> | |
| Natural Selection and Evolutionary Change | 237 |
| <i>Kevin Padian</i> | |
| Long/Short Term Influences on Change | 249 |
| <i>Kaustubh Roy</i> | |
| Rates of Evolution | 257 |
| <i>Steven M. Stanley</i> | |
| The Evolution of Biodiversity: Richness and Disparity | 265 |
| <i>James W. Valentine</i> | |

Section 5: Modeling Evolution

| | |
|---|-----|
| Creating Models for Interpreting Data | 277 |
| <i>Roy E. Plotnick</i> | |

Section 6: Faith and Science

| | |
|---|-----|
| Science, Religion, and Evolution | 291 |
| <i>Eugenie C. Scott</i> | |
| Religious Faith and the Geological Sciences | 307 |
| <i>Chaim Benjamini</i> | |

Appendices

| | |
|---|-----|
| Appendix I: Glossary | 319 |
| Appendix II: Additional Resources | 325 |
| Appendix III: The Authors | 327 |

