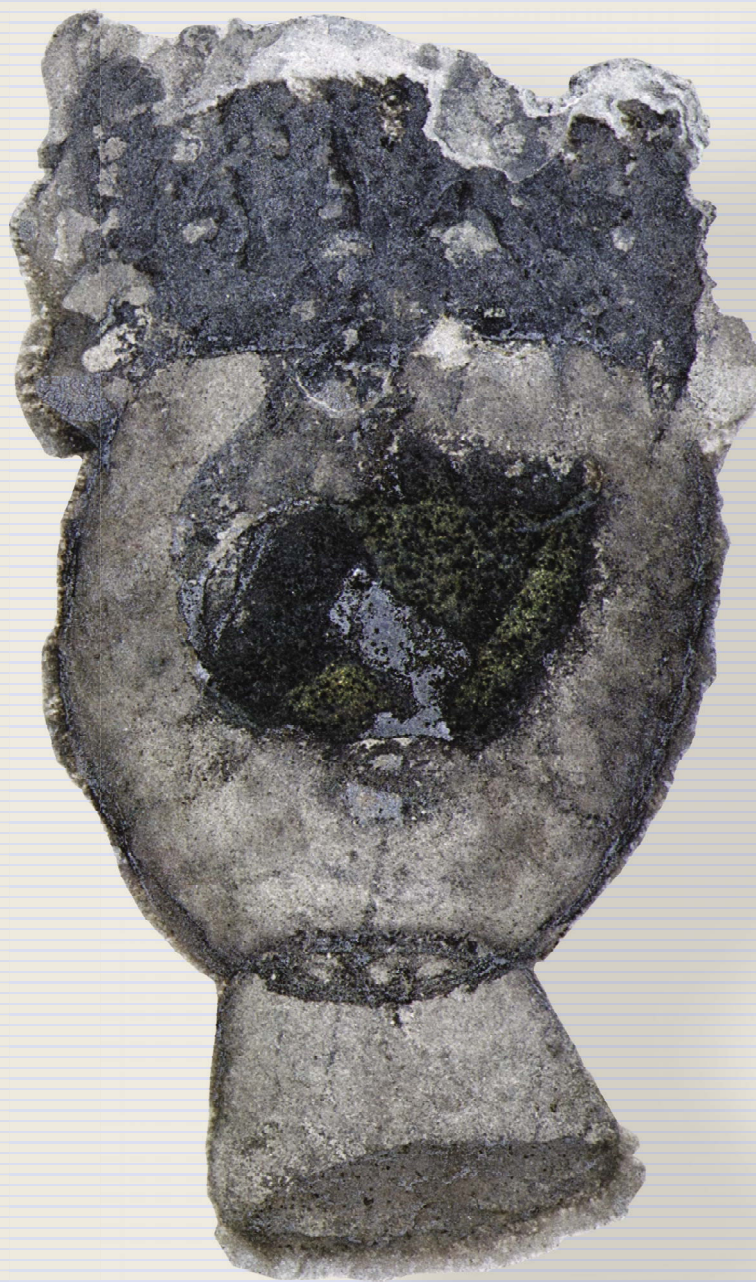


JOURNAL of PALEONTOLOGY



The
Paleontological
Society

VOL 89 | NO 4 | 2015



CAMBRIDGE
UNIVERSITY PRESS



OFFICERS AND EDITORS OF THE PALEONTOLOGICAL SOCIETY



President

STEVE HOLLAND,
Department of Geology
University of Georgia
210 Field Street
Athens, GA 30602-2501
stratum@uga.edu

President-Elect

ARNOLD I. MILLER,
Department of Geology
University of Cincinnati
Cincinnati, OH 45221-0013
Arnold.miller@uc.edu

Past President

SANDRA J. CARLSON,
Geology Department
University of California–Davis
One Shields Avenue
Davis, CA 95616-8605
sjcarlson@ucdavis.edu

Secretary

MARK A. WILSON
Department of Geology
The College of Wooster
Wooster, OH 44691
mwilson@wooster.edu

Treasurer

PETER J. HARRIES
Department of Geology
University of South Florida
4202 East Fowler Avenue
Tampa, FL 33620
harries@chuma.cas.usf.edu

JP Editors

BRIAN R. PRATT, Univ. Saskatchewan
brian.pratt@usask.ca

STEVEN J. HAGEMAN,
Appalachian State Univ.
hagemansj@appstate.edu

JP Managing Editor

SARA A. MARCUS, Klamath Falls, OR 97601
journalofpaleontology@cambridge.org

JP Associate Editors

JUAN LUIS BENEDETTO,
Univ. Nacional de Cordoba
jbenedetto@efn.uncor.edu

STYLIANOS CHATZIMANOLIS,
Univ. Tennessee–Chattanooga
stylianos-chatzimanolis@utc.edu

TOM CRONIN, USGS
tcronin@usgs.gov

WILLIAM A. DIMICHELE,
Smithsonian Institution
dimichel@si.edu

ROBERT J. ELIAS, Univ. of Manitoba
eliasrj@ms.umanitoba.ca

NADIA FRÖBISCH, Museum für Naturkunde
nadiafroebisch@mfn-berlin.de

FOREST J. GAHN, Brigham Young Univ., Idaho
gahnf@byui.edu

JOSEPH HANNIBAL, Cleveland Museum of
Natural History
jhannibal@cmnh.org

PETER J. HARRIES, Univ. of South Florida
harries@chuma.cas.usf.edu

JOACHIM HAUG, Univ. of Greifswald
joachim.haug@palaeo-evo-devo.info

MICHAEL HAUTMANN, Univ. of Zurich
michael.hautmann@pim.uzh.ch

MARTIN J. HEAD, Brock Univ.
mjhead@brocku.ca

BRIAN T. HUBER, Smithsonian Institution
huberb@si.edu

NIGEL HUGHES, UC Riverside
nigel.hughes@ucr.edu

ZERINA JOHANSON,
Natural History Museum, London
z.johanson@nhm.ac.uk

DANIEL KSEPKA, Bruce Museum
dksepka@brucemuseum.org

STEPHEN A. LESLIE, James Madison Univ.
lesliesa@jmu.edu

BRUCE LIEBERMAN, Univ. of Kansas
blieber@ku.edu

RICK LUPIA, OK Museum
rlupia@ou.edu

GABRIELA MÁNGANO, Univ. Saskatchewan
gabriela.mangano@usask.ca

MALGORZATA MOCZYDŁOWSKA-VIDAL,
Uppsala Univ.
malgo.vidal@pal.uu.se

ERIC SCOTT, San Bernardino Co. Museum
escott@sbc.sbcounty.gov

MARY SILCOX, Univ. of Toronto Scarborough
msilcox@utsc.utoronto.ca

HANS-DIETER SUES, Smithsonian Institution
suesh@si.edu

COLIN SUMRALL, Univ. of Tennessee
csumrall@utk.edu

LEIF TAPANILA, Idaho State Univ.
tapaleif@isu.edu

DAVID VARRICCHIO, Montana State Univ.
djv@montana.edu

PETER WAGNER, Smithsonian Institution
wagnerpj@si.edu

STEVE WESTROP, OK Museum
swestrop@ou.edu

DAVID M. WORK, Maine State Museum
david.work@maine.gov

MARGARET M. YACOBUCCI,
Bowling Green State Univ.
mmyacob@bgsu.edu

Paleobiology Co-Editors

BRUCE MACFADDEN,
DOUGLAS JONES, JOHNATHAN BLOCH,
AND MICHAEL KOWALEWSKI,
Univ. of Florida

Editor of Special Publications

SARA A. MARCUS, Oregon Inst. Of Technology
sara.marcus@oit.edu

Communications Officer

LEIF TAPANILA, Idaho State Univ.
tapleif@isu.edu

Program Coordinator

THOMAS OLSZEWSKI, Texas A&M Univ.
tomo@geo.tamu.edu

Education Coordinator

MARGARET M. YACOBUCCI,
Bowling Green State Univ.
mmyacob@bgsu.edu

Councilors

LAURIE COLLINS,
Florida International Univ.
collinsl@fiu.edu

MARGRET FRAISER,
Univ. of Wisconsin, Milwaukee
mfraiser@uwm.edu

Student Representative

LUCY CHANG,
Univ. California, Berkeley
luchang@berkeley.edu

Section Chairs

Cordilleran: NICOLE BONUSCO
CA State Univ.–Fullerton
nbonuso@fullerton.edu

North Central: REBECCA FREEMAN
Univ. of Kentucky
rebecca.freeman@uky.edu

Northeastern: ALEXANDER J.
BARTHOLOMEW
SUNY–New Paltz
barthola@newpaltz.edu

Rocky Mountain: LEIF TAPANILA
Idaho State Univ.
tapaleif@isu.edu

South-Central: BEN WAGGONER
Univ. Central Arkansas
benw@mail.uca.edu

Southeastern: CHRISTY VISAGGI,
Georgia State Univ.
cvisaggi@gsu.edu

Cover illustration: The Cambrian deuterostome *Thylacocercus ignota* n. gen. n. sp., Wheeler Formation, Drum Mountains, Millard County, Utah, from Conway Morris et al., Fig. 5.2, p. 634.

ISSN 0022-3360

Copyright © 2016 The Paleontological Society. All rights reserved.

SUBSCRIPTION INFORMATION

The Journal of Paleontology [ISSN 0022-3360] is published bimonthly (January, March, May, July, September, and November) by Cambridge University Press for the Paleontological Society. Members of the Paleontological Society automatically receive electronic subscriptions to the *Journal of Paleontology* and *Paleobiology* as a benefit of membership. Institutional subscriptions can be purchased direct from Cambridge University Press or through any major subscription agent. Print-only, online-only and bundled print and online prices are all available, and subscription prices are tiered according to institution type and size.

Please contact Cambridge University Press for further details:

For customers in North America

Email: subscriptions_newyork@cambridge.org;

Phone: (800) 872-7423, option 4

For customers outside of North America

Email: journals@cambridge.org;

Phone: +44 (0)1223-32-6070; Fax: +44 (0)1223-32-5150

Downloads of individual articles are available on <http://journals.cambridge.org/JPA>.

Reprints of individual articles may be ordered. For information on reprints, please contact Cambridge University Press.

Archives of previous issues are available on <http://journals.cambridge.org/JPA>.

Permissions All rights reserved. Permissions policies, request forms, and contacts are available at: <http://www.paleosoc.org/content/copyright.html>.

Reproduction Policy For complete information, please see: <http://www.paleosoc.org/copyright.htm>.

ADVERTISING

To advertise in the journal please email USAdSales@cambridge.org or telephone +1(212) 337-5053 in the USA, Canada, or Mexico; email ad_sales@cambridge.org or telephone +44 (1223) 325083 in the rest of the world.

ABSTRACTING AND INDEXING

Articles published in the *Journal of Paleontology* are indexed by De Gruyter Saur, EBSCOhost, Elsevier BV, Gale, GeoScienceWorld, MetaPress, National Library of Medicine, Ovid, ProQuest, and Thomson Reuters.

POSTAL INFORMATION

Periodicals postage rate paid at New York, NY, and at additional mailing offices. POSTMASTER: Send address changes in the USA, Canada, and Mexico to: *Journal of Paleontology*, Cambridge University Press, Journals Fulfillment Department, 32 Avenue of the Americas, New York, NY 10013. Send address changes elsewhere to the *Journal of Paleontology*, Cambridge University Press, Journals Fulfillment Department, UPH, Shaftesbury Road, Cambridge CB2 8BS, England.

Copyright © 2016 The Paleontological Society. All rights reserved.

Printed in the United States of America

Lane

PALEONTOLOGY

SPECIMEN CABINETS



- * All steel construction
- * Powder paint finish
- * Durable door seal
- * No adhesives
- * Reinforced for easy stacking
- * Sturdy steel trays

LANE SCIENCE EQUIPMENT CORP.

225 West 34th Street
Suite 1412
New York, NY 10122-1496

Tel: 212-563-0663
Fax: 212-465-9440
www.lanescience.com