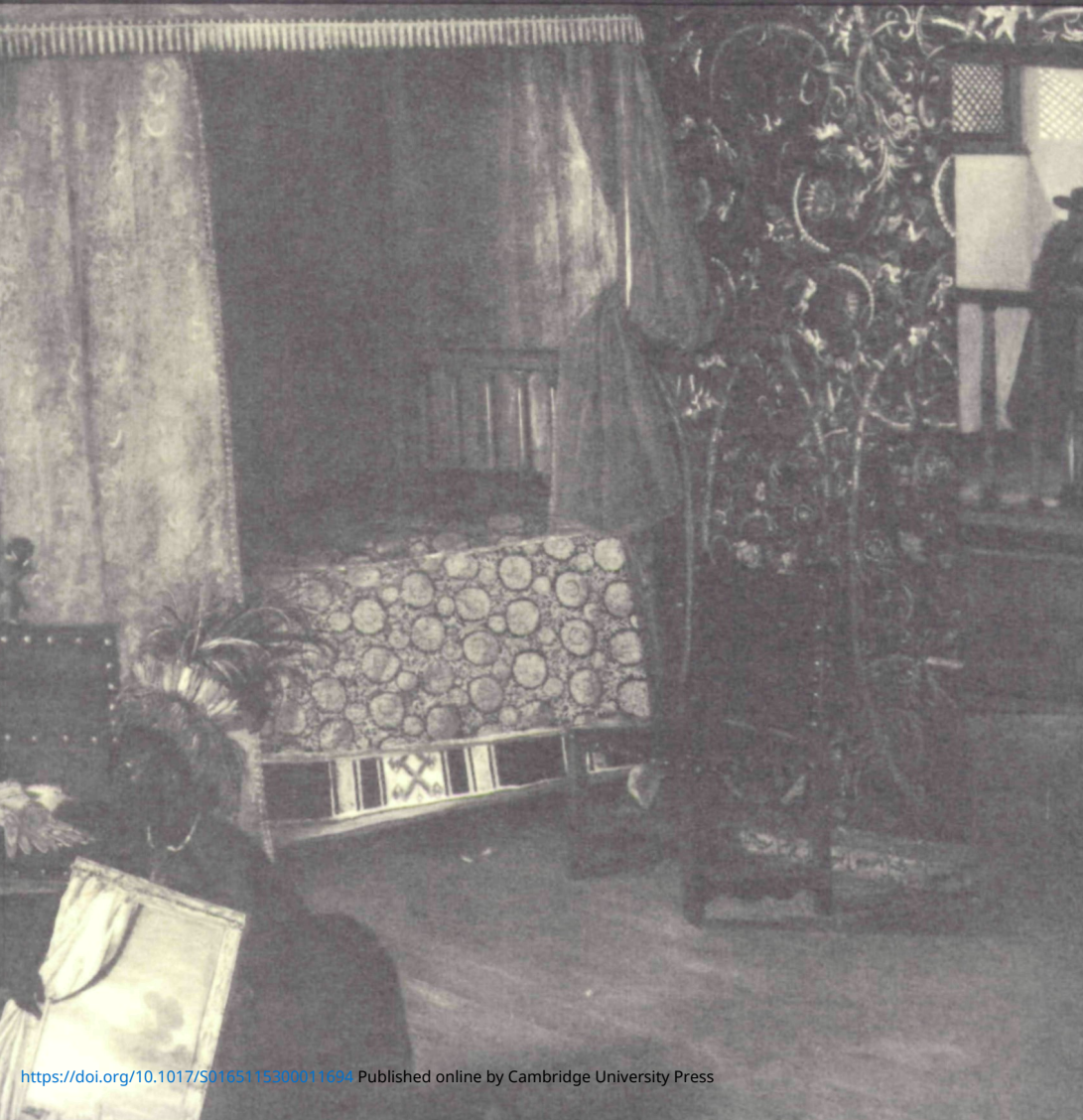


ITINERARIO

3/4

1992

VOLUME XVI



**CURRENT ANNOTATED
BIBLIOGRAPHY
OF
DUTCH EXPANSION STUDIES**

ITINERARIO

ITINERARIO VOLUME XVI (1992) 3/4

CURRENT ANNOTATED BIBLIOGRAPHY OF DUTCH EXPANSION STUDIES

COMPILED BY JAAP DE MOOR



LEIDEN
GRAFARIA
1994

INSTITUTE FOR THE HISTORY OF EUROPEAN EXPANSION

The Institute for the History of European Expansion, founded by the School of Humanities of Leiden University, intends to register, to coordinate, and to promote research and studies in the field of the History of European Expansion and the reactions to it.

Board: C. Fasseur (chairman); W.P. Blockmans, A.H. de Groot, W.L. Idema, P.W. Klein (members)

Director: H.L. Wesseling

All communications and inquiries may be addressed to the staff:

R.A.M. Baesjou (Expansion History, Africa), L. Blussé (Secretary of the Institute, Expansion History, Asia), P.C. Emmer (Expansion History, the Americas), J.A. de Moor (Documentation and Exchange).

Address: Doelensteeg 16, P.O. Box 9515, 2300 RA Leiden, The Netherlands.

Telephone: (0)71-272768; fax: (0)71-272615.

Editors: Pieter Emmer, Wim Klooster, Dirk Kolff, Jaap de Moor, Remco Raben, Hans Vogel.

Consulting Editors: L. Blussé, F.S. Gaastra, R. Ross, H.L. Wesseling.

For information concerning subscription fees or exchange of relevant publications, please contact the Institute.

All correspondence should be addressed to the Editors, *Itinerario*, History Department, Leiden University, P.O. Box 9515, 2300 RA Leiden, The Netherlands.

Copyright University of Leiden 1994
ISSN 0165-1153

Coverphoto:

Director-General Dirck Wilre in the Dutch castle of Elmina. Painting by Pieter de Wit, 1669.

Contents

Archives and Bibliographies	5006-5022
General studies on Dutch Expansion History	5023-5060
Africa	5061-5078
The Americas	5079-5108
Middle East and Asia	5109-5125
Indonesia	5126-5268
Authors index	pp. 101-104
Index of subjects and personal names	pp. 107-111