

CAMBRIDGE

New and Noteworthy

Mesolithic Europe

Edited by GEOFF BAILEY, PENNY SPIKINS

\$47.00: Hardback: 978-0-521-85503-7

\$45.00: Paperback: 978-0-521-14797-2: 498 pp.



NOW IN PAPERBACK!

Material Cultures, Material Minds The Impact of Things On Human Thought, Society, and Evolution

NICOLE BOIVIN

\$33.99: Paperback: 978-0-521-17613-2: 288 pp.

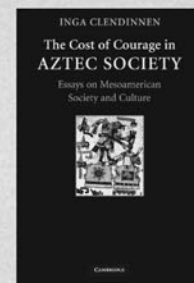


The Cost of Courage in Aztec Society Essays on Mesoamerican Society and Culture

INGA CLENDINNEN

\$85.00: Hardback: 978-0-521-51811-6

\$24.99: Paperback: 978-0-521-73207-9: 224 pp.

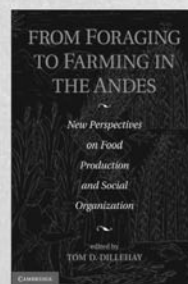


From Foraging to Farming in the Andes

New Perspectives on Food Production and
Social Organization

Edited by TOM D. DILLEHAY

\$90.00: Hardback: 978-1-107-00527-3: 350 pp.



An Introduction to Classical Nahuatl

MICHEL LAUNY

Edited and translated by
CHRISTOPHER MACKAY

\$90.00: Hardback: 978-0-521-51840-6

\$39.99: Paperback: 978-0-521-73229-1: 474 pp.

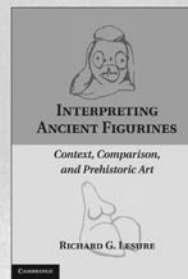


Interpreting Ancient Figurines

Context, Comparison, and Prehistoric Art

RICHARD G. LESURE

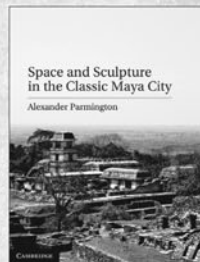
\$95.00: Hardback: 978-0-521-19745-8: 276 pp.



Space and Sculpture in the Classic Maya City

ALEXANDER PARMINGTON

\$95.00: Hardback: 978-1-107-00234-0: 288 pp.



Prices subject to change.

www.cambridge.org/us



CAMBRIDGE
UNIVERSITY PRESS

Instructions for Contributors

Ancient Mesoamerica will publish primarily in English, but will also feature contributions in Spanish. All papers will have Spanish (or English) summaries as a regular feature to enhance scholarly communication. When preparing your contribution, please remember that *Ancient Mesoamerica* unifies several different fields from archaeology to ethnohistory, art history and beyond. We also wish to reach nonspecialist readers. While some degree of technical language is often proper and necessary, jargon can always be avoided. Therefore, authors should strive for clear, lucid prose. The Editors will gladly discuss topics or contents of manuscripts prior to submission.

Manuscript Submission

Doctoral candidates as well as established scholars are encouraged to submit to *Ancient Mesoamerica*. Submissions from doctoral candidates must be accompanied by a letter of commendation from their project director or dissertation supervisor. As of May 1, 2007, *Ancient Mesoamerica* no longer accepts hardcopy submissions. All submissions should be emailed to the Editors at ancientmeso@gmail.com, and should consist of the following: a reading copy of the paper attached as a *single* PDF (Portable Document Format) file—to include abstract, manuscript, figures, tables, and bibliography—of *no more than* 3 MB in size. The body text of the email should contain the name and preferred email address of the corresponding author, the names of all co-authors, the title of the paper, an abstract, and a note of transmittal stating that the work has not been published elsewhere, in whole or in part, nor is it under consideration for publication elsewhere. An abstract of 150 words or less and a longer summary (1–2 double-spaced pages) of the paper in Spanish should be included. We do not permit the use of footnotes and endnotes except in very rare instances. Critical information should be included in the text. The order of manuscript elements should be as follows: title page, abstract, main text, Spanish summary, acknowledgments, references, tables, and figures. Tables and figures should be numbered consecutively using Arabic numerals.

Peer Review Procedures

Each contribution will be reviewed by at least three, and sometimes as many as five, outside readers who will make recommendations to the Editors concerning revision of the manuscript, acceptance or rejection. Reviewers may choose to remain anonymous; in any case, all comments will be passed on to the authors.

Editorial Style

In general, follow *American Antiquity* style. The *SAA Style Guide* can be downloaded from <http://www.saa.org/Publications/StyleGuide/styFrame.html>. The treatment of accents differs from that of the *SAA Style Guide* in that *Ancient Mesoamerica* uses accents only for names and place names of European origin, e.g. *Monte Albán*, *El Baúl*, but *Teotihuacan*, *Mayapan*. However, quoted and cited material should reflect the spellings in the original source (see reference to the Johnston paper in the next section) and personal names should, of course, follow accepted spelling. Contributors are advised to peruse published volumes of the journal before submission to familiarize themselves with the style and format of the journal, including the treatment of subheadings, captions, and tables.

Citation and Reference Style

References should generally follow *American Antiquity* style (see above). Please note that “in press” or “in preparation” references

should not be used. A date should be provided for all references, and references should clearly state where readers may obtain copies of unpublished manuscripts. Authors’ full first names, rather than initials, should be provided (note that this differs from *American Antiquity* style). Page numbers should be provided for all citations of specific data. Sample references:

- Diehl, Richard A.
2004 *The Olmecs: America’s First Civilization*. Thames and Hudson, New York.
- LaPorte, Juan Pedro
2003 Architectural Aspects of Interaction between Tikal and Teotihuacan in the Early Classic Period. In *The Maya and Teotihuacan: Interpreting Early Classic Interaction*, edited by Geoffrey E. Braswell, pp. 199–216. University of Texas Press, Austin.
- Johnston, Kevin J.
2004 The “Invisible” Maya: Minimally Mounded Residential Settlement at Itzán, Petén, Guatemala. *Latin American Antiquity* 15:145–175.
- Peraza Lope, Carlos, Marilyn A. Masson, Timothy S. Hare, and Pedro Candelario Delgado Kú
2006 The Chronology of Mayapan: New Radiocarbon Evidence. *Ancient Mesoamerica* 17(2):153–175.
- Walker, William H., and Gaea MaGahee
2001 Animated Waters: The Ritualized Life History of Wells, Reservoirs, and Springs at Casas Grandes, Chihuahua. Paper presented at the 66th Annual Meeting of the Society for American Archaeology, New Orleans.
- Smith, Michael E.
1988 *Long-Distance Trade under the Aztec Empire: The Archaeological Evidence*. Unpublished manuscript on file, Department of Sociology and Anthropology, Loyola University of Chicago.

Final Submission

After a contribution is accepted, the Editors will require a manuscript file in a common digital format, such as Rich Text Format (RTF), Microsoft Word, or WordPerfect. Best practices for the production of digital manuscripts should be followed. Illustration files should be provided in ready-to-print, high-quality digital formats, according to the following basic guidelines:

Line drawings (including stippled drawings):

1200 dots per inch (dpi), bitmap (1-bit) color mode, TIF format

Alternative for line drawings:

Vector-based images may be submitted in Illustrator, EPS, or PDF format

Halftone drawings and photographs:

300 dpi, 8-bit grayscale color mode, TIF format

Dots per inch (dpi) values given are for images at final printed size. In most cases, the size of image files will require that manuscript and images be written to CD or DVD media for final submission. Authors who prefer to submit non-electronic, camera-ready artwork should contact the editors for further information.

Copyright and Offprints Policy

Contributors must complete the Transfer of Copyright Agreement form, available from the Editors, before their paper can be transmitted for production. The lead author of each article or report will receive 25 free offprints, with the opportunity to purchase additional offprints and complete copies of the issue at favorable rates.

Ancient Mesoamerica

Volume 22, Number 1

Spring 2011

ARTICLES

- | | | |
|--|---|-----|
| Manioc Cultivation at Ceren, El Salvador:
Occasional Kitchen Garden Plant or
Staple Crop? | <i>Payson Sheets, Christine Dixon, Monica Guerra,
and Adam Blanford</i> | 1 |
| Writing in Space: Glottographic and
Semasiographic Notation at Teotihuacan | <i>Pierre Robert Colas</i> | 13 |
| The Origin of Orthographic hu for /w/
in Nahuatl | <i>Una Canger</i> | 27 |
| “Real-Time” Climate Events in the Borgia-Group
Codices: Testing Assumptions about
the Calendar | <i>Chris Woolley and Susan Milbrath</i> | 37 |
| Technologies of Time: Calendrics and Commoners
in Postclassic Mexico | <i>Elizabeth M. Brumfiel</i> | 53 |
| Sowing the Blood with the Maize: Zapotec Effigy
Vessels and Agricultural Ritual | <i>Adam T. Sellen</i> | 71 |
| Swidden Agriculture in the <i>Tierra Fria?</i> :
Evidence from Sedimentary Records in Tlaxcala | <i>Aleksander Borejsza, Charles D. Frederick, and
Richard G. Lesure</i> | 91 |
| Evolution of the Mesoamerican Mother Culture | <i>Hector Neff</i> | 107 |
| Shifting Patterns of Obsidian Exchange in
Postclassic Oaxaca, Mexico | <i>Marc N. Levine, Arthur A. Joyce, and
Michael D. Glascock</i> | 123 |
| The Obsidian and Ceramics of the Puuc Region:
Chronology, Lithic Procurement, and
Production at Xkipche, Yucatan, Mexico | <i>Geoffrey E. Braswell, Iken Paap, and
Michael D. Glascock</i> | 135 |
| Identifying a Forged Maya Manuscript in
UNESCO’s World Digital Library | <i>Markus Eberl and Hanns J. Prem</i> | 155 |
| Keeping Abreast of the Maya: A Study of the
Female Body in Maya Art | <i>Andrea J. Stone</i> | 167 |
| The Weight of Water: A New Look at Pre-hispanic
Puuc Maya Water Reservoirs | <i>Christian Isendahl</i> | 185 |
| Why the Head? Cranial Modification as Protection
and Ensoulment among the Maya | <i>William N. Duncan and Charles Andrew Hofling</i> | 199 |

Cambridge Journals Online

For further information about this journal please
go to the journal website at:

journals.cambridge.org/atm

CAMBRIDGE
UNIVERSITY PRESS