

The Large-scale Structure in the Chandra Deep Field South

Dario Trevese¹, Fabrizio Fiore²,
Enrico Piconcelli², Marco Castellano², Laura Pentericci²,
Piero Ranalli^{3,4} and Andrea Comastri⁴

¹Sapienza Università di Roma, P.le Aldo Moro 5, 001865 Roma, Italy
email: dario.trevese@roma1.infn.it

²INAF-Osservatorio Astronomico di Roma, via Frascati 33, 00040 Monteporzio (RM), Italy

³Dipartimento di Astronomia, Università di Bologna, via Ranzani 1, 40127 Bologna, Italy

⁴INAF-Osservatorio Astronomico di Bologna, via Ranzani 1, 40127 Bologna, Italy

Abstract. We have studied the large scale distribution of matter in the Chandra Deep Field South on the basis of photometric redshifts and we have identified several over-densities between redshift 0.6 and 2.3. We analyse two of these structures using the deepest X-ray observations ever obtained: 4 Ms with the Chandra satellite and 2.5 Ms with XMM-Newton. We set a very faint upper limit on the X-ray luminosity of a structure at redshift 1.6, and we find an extended X-ray emission from a structure at redshift 0.96 of which we can estimate the gas temperature and make a comparison with the scaling relations between the X-ray luminosity and mass or temperature of high redshift galaxy clusters.

Keywords. galaxies: clusters: general, X-rays: galaxies: clusters

1. Introduction

Being the largest and most massive bound structures in the Universe, galaxy clusters provide the most biased environment for galaxy evolution. Thus, they are ideal laboratories for studying the physical processes responsible for galaxy formation and evolution. With optical selection, it is relatively easy to obtain large statistical samples of clusters. The main disadvantage is that these samples are seriously affected by projection effects. Only expensive spectroscopic campaigns can confirm overdensities in 3 dimensions. The X-ray detection is more robust against line-of-sight contamination, but it has a lower efficiency and higher observational cost as compared to optical surveys. Studying the X-ray properties of optically selected clusters is essential to understand the selection effect. On one hand, extremely deep X-ray surveys with Chandra and XMM-Newton, make the detection of the highest redshift cluster possible, on the other hand they are also extending the minimum luminosity, i.e. the least massive structures, to which X-ray clusters can be detected and analyzed at intermediate redshifts. Galaxy groups and clusters with $kT \lesssim 3$ keV are more likely to display the effects of non gravitational energy into the intracluster medium (ICM) than hotter, more massive clusters.

In previous studies we have proposed a “(2+1) Dimensions” method, based on photometric redshifts (Trevese *et al.* (2007)), to detect overdensities in the large scale distribution of galaxies, down to the faintest limits attainable nowadays with optical wide-band photometric surveys. A comprehensive study of the Chandra Deep Field South (CDFS) allowed us to detect 12 overdensities with redshifts in the range $0.6 < z < 2.3$ (Castellano *et al.* (2007), Salimbeni *et al.* (2009)).

We present preliminary results of the analysis of the deepest X-ray images available to date, from the 4 Ms Chandra observations of the CDFS recently made public by the

Chandra X-ray Center, and 2.5 Ms XMM-Newton observations (Comastri *et al.* (2011)), restricted to two over-densities, with spectroscopic redshifts $z=0.96$ and $z=1.6$ respectively.

In the following we adopt $H_0=70 \text{ km s}^{-1}\text{Mpc}^{-1}$, $\Omega_m=0.3$, $\Omega_\Lambda=0.7$

2. Observations

The over-density at $z=1.61$ All of the three X-ray sources detected in the area of the over-density at $z=1.61$, correspond to objects identified in the GOODS-MUSIC catalogue (Grazian *et al.* (2006)), with redshifts 0.67, 1.04 and 1.35, thus not belonging to the structure at $z=1.61$ (Fig. 1). Eliminating these sources, we obtain a 3σ upper limit to the flux $F(0.5-2 \text{ keV}) < 2.5 \times 10^{-16} \text{ erg/cm}^2/\text{s}$ which corresponds to a bolometric luminosity $L < 10^{43} \text{ erg/s}$, for $T=3 \text{ keV}$. Kurk *et al.* (2009) provided new spectroscopic redshifts, analysed the velocity distribution and estimated a virial mass $M_{vir} = 9.0 \times 10^{13} M_\odot$. Assuming a typical density profile we can convert the mass to $M_{500} = 6.4 \times 10^{13} M_\odot$, where M_{500} is the mass within a sphere with a mean inner density 500 times the critical density ρ_c .

The over-density at $z=0.96$ An extended source is detected in the region of the over-density at $z=0.96$ (Fig. 2). The peak of the X-ray emission coincides with a normal galaxy at $z=0.96$ with no emission lines (Szokoly *et al.* (2004)). Notice that this implies a revision of the earlier classification of the X-ray source as Type 2 AGN.

Considering the extended character of the emission and the absence of AGN detections in the cluster area, we fitted simultaneously the Chandra and XMM-Newton X-ray spectra with a MEKAL model, with an abundance $Z/Z_\odot=0.3$, obtaining a temperature $T = 2.6_{-0.3}^{+0.5} \text{ keV}$ (1σ error) (Fig. 2).

From 11 redshifts available in the cluster area, the velocity dispersion is $\sigma_v=420 \text{ Km/s}$, which would corresponds to a virial mass:

$M_{vir} = 7.3 \times 10^{13} M_\odot$ or to $M_{500} = 5.2 \times 10^{13} M_\odot$, assuming complete relaxation and following Kurk *et al.* (2009).

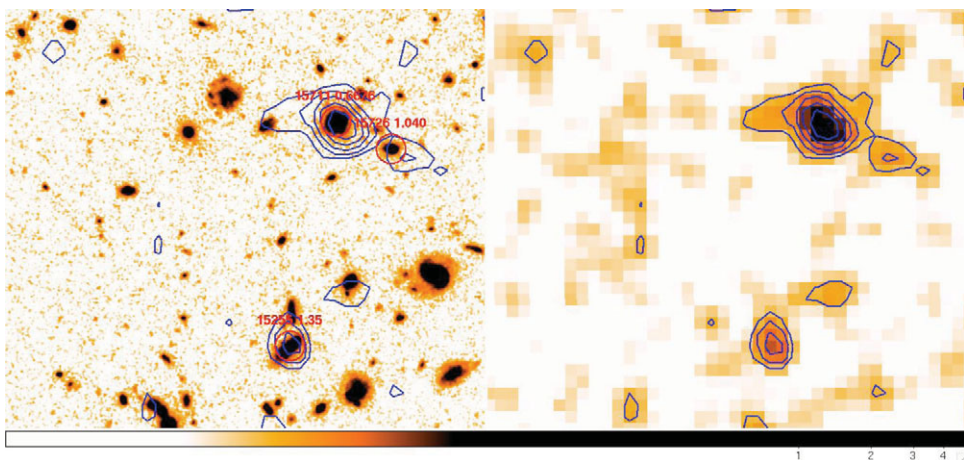


Figure 1. *Left:* Hubble Space Telescope WFC3 H band image. The spectroscopic redshift and MUSIC catalogue identification of the X-ray sources are indicated. *Right:* Chandra 4 Ms image of the same field in the 0.5-2 keV band. The X-ray isophotes are shown on both images.

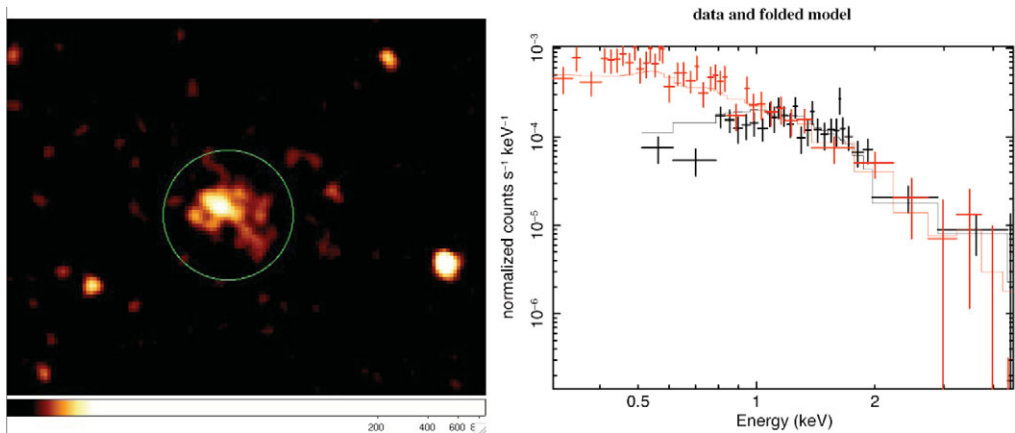


Figure 2. *Left:* Chandra 4 Ms image showing the extended emission from the region of the overdensity at $z=0.96$. The circle indicates the aperture adopted to extract the X-ray spectrum. *Right:* simultaneous fit of Chandra and XMM-Newton spectra of the extended source at $z=0.96$, with a MEKAL model with $T=2.6$ keV and assumed abundance $Z/Z_{\odot}=0.3$. The XMM spectrum (red, in the electronic version) extends to lower energy.

The M-T scaling relation obtained by Popesso *et al.* (2005) for clusters with mean redshift $z \sim 0$: $M_{500} = 2.89 \times 10^{13} T^{1.59} M_{\odot}$ would give, instead $M_{500} = 1.3 \times 10^{14} M_{\odot}$, possibly suggesting an evolution of the M-T relation from $z \sim 0.1$ to $z \sim 1$.

3. Results

In figure 3 we compare our results with the $L_X - T$ and $L_X - M$ scaling relations obtained: i) by Hicks *et al.* (2008) for high redshift clusters with $0.6 < z < 1.2$, optically selected by the Red-Sequence Cluster Survey (RCS) (Gladders *et al.* (2005)); ii) by Ettori *et al.* (2004) for X-ray selected clusters in the range $0.4 < z < 1.3$.

- For the structure at $z=1.61$ we indicate our 3σ upper limit on L_X , while for the unknown temperature we indicate the range 1.2-6 keV. In both diagrams the structure is underluminous with respect to the scaling relations. This suggests it is a forming cluster which did not reach full relaxation.

- The structure at $z=0.96$ is consistent with the steeper scaling relations of Ettori *et al.* (2004) and not with those of Hicks *et al.* (2008), despite it was selected in the optical band.

- For the other structures we identified in the CDFS (Castellano *et al.* (2007), Salimbeni *et al.* (2009)) the analysis of the deepest X-ray data existing to date is in progress.

- The present result, if confirmed, would strengthen the evidence of a strong redshift evolution of the scaling relation, of the type found by Ettori *et al.* 2004.

- The detection of very low X-ray luminosity objects among optically selected structures could be related to the fact that our "(2+1) D" method (Trevese *et al.* (2007)), unlike the RCS, is independent of the presence of a red sequence, which tends to be less evident at high redshift.

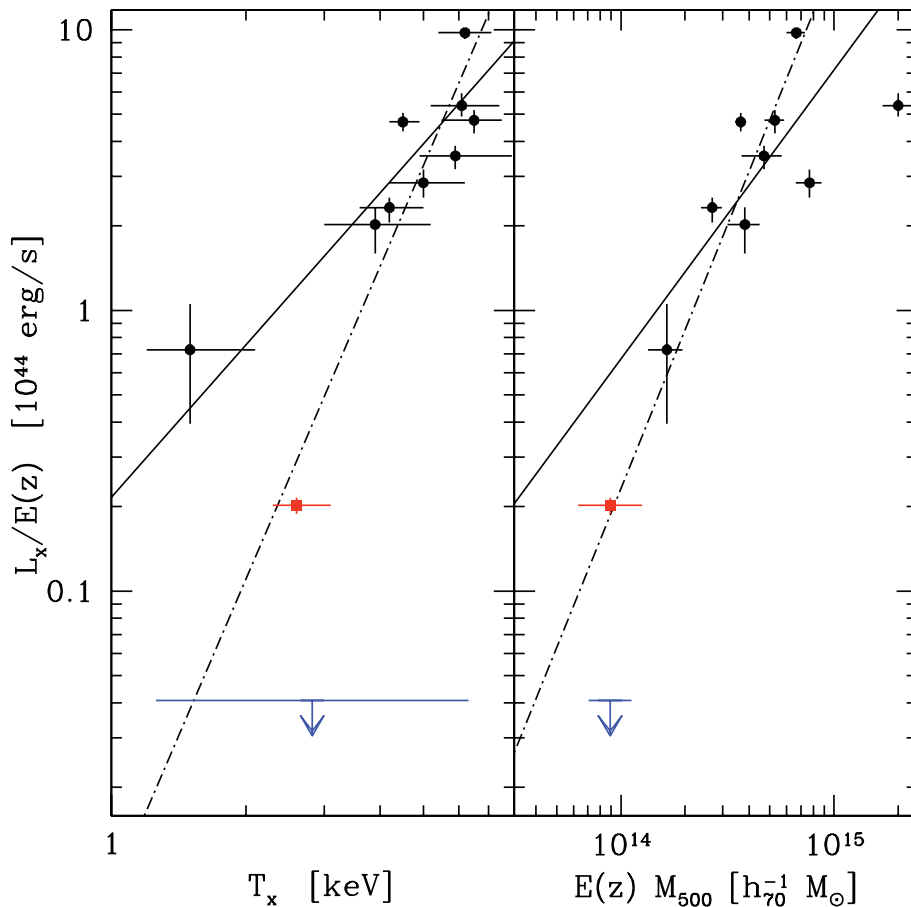


Figure 3. Bolometric X-ray luminosity versus temperature (*left*) and versus mass (*right*), where $E(z) = [\Omega_m(1+z)^3 + \Omega_\Lambda]^{1/2}$. Filled circles: clusters in the range $0.6 < z < 1.2$ from Hicks *et al.* (2008); filled square: structure at ($z=0.96$); arrow: structure at ($z=1.61$). Continuous line: fit to the Hicks *et al.* (2008) points; dashed line: scaling relation of Ettori *et al.* (2004) for an X-ray selected sample with $0.4 < z < 1.3$.

References

- Catellano, M., Salimbeni, S., Trevese, D., Grazian, A., *et al.* 2007, *ApJ*, 671, 1497
 Comastri, A., Ranalli, P., Iwasawa, K. *et al.* 2011, *A&A*, 526, L9, in press [arXiv:1012.4011]
 Ettori, S., Tozzi, P., Borgani, S., & Rosati, P. 2004, *A&A*, 417, 13
 Gladders, M. D. & Yee, H. K. C. 2005, *ApJS*, 157, 1
 Grazian, A., Fontana, A., de Santis, C., Nonino, M., *et al.* 2006, *A&A*, 449, 951
 Hicks, A. K., Ellingson, E., Bautz, M., Cain, B., *et al.* 2008, *AJ*, 680, 1022
 Kurk, J., Cimatti, A., Zamorani, G., Halliday, C., *et al.* 2009, *A&A*, 504, 331
 Salimbeni, S., Castellano, M., Pentericci, L., Trevese, D. *et al.* 2009, *A&A*, 501, 865
 Popesso, P., Biviano, A., Bhringer, H., Romaniello, M., & Voges, W. 2005, *A&A*, 433, 431
 Trevese, D., Castellano, M., Fontana, A., & Giallongo, E. 2007, *A&A*, 463, 853
 Szokoly, G. P., Bergeron, J., Hasinger, G., Lehmann, I., *et al.* 2004, *ApJS*, 155, 271