



LOOK AGAIN... LOOK AGAIN...

Just for Fun!

See if you can find the 8 differences in each set of images.

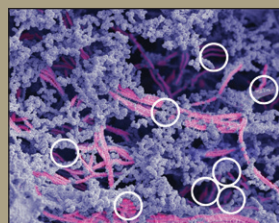
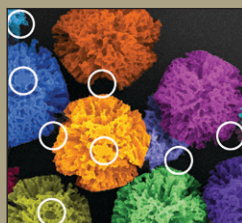
Succulents in flowerpots

Colorized image of an Al_2O_3 nanobowl obtained via a scanning electron microscope. Several pots of succulent plants were placed on the lawn, with varied succulent designs, luxuriant branches, and bright colors. Gravel was laid on the side of the flowerpot to separate the lawn. The mottled grass on the yellow soil grew vigorously, and a few pebbles were scattered sporadically. The inset shows the original image.

Hongqing Feng, Beijing Institute of Nanoenergy and Nanosystems, Chinese Academy of Sciences, China.



October 2019 answer key



Yoda

Scanning electron microscope (SEM) image of an oxidized two-dimensional V_2CT_x MXene particle showing similarities to the Yoda character in the *Star Wars* movie series. V_2CT_x is synthesized by selective etching of Al atoms from the V_2AlC MAX phase and is a promising electrode material for energy-storage devices, such as supercapacitors and batteries. The SEM image was taken using a JEOL JSM-7000F scanning electron microscope, and fake colors were added using computer software, without manipulation of the original image (only eyes and ears are added to the image to help with showing the resemblance).

Armin VahidMohammadi, Auburn University, USA.



Answers will be published in the February 2020 issue.

Images on the top were submitted to the Materials Research Society "Science as Art" competition. Images on the bottom were modified in Adobe Photoshop for this "Look Again" activity.