

BRIEF RESEARCH REPORT

SES effects on the use of variation sets in child-directed speech

Shira TAL* and Inbal ARNON

Hebrew University of Jerusalem, Cognitive Science, Mount Scopus, Jerusalem 9190501, Israel

*Corresponding author: shira.tal@mail.huji.ac.il

(Received 9 October 2017; revised 12 March 2018; accepted 23 May 2018;
first published online 5 July 2018)

Abstract

Socio-economic status (SES) impacts the amount and type of input children hear in ways that have developmental consequences. Here, we examine the effect of SES on the use of variation sets (successive utterances with partial self-repetitions) in child-directed speech (CDS). Variation sets have been found to facilitate language learning, but have been studied only in higher-SES groups. Here, we examine their use in naturalistic speech in two languages (Hebrew and English) for both low- and high-SES caregivers. We find that variation sets are more frequent in the input of high-SES caregivers in both languages, indicating that SES also impacts structural properties of CDS.

Keywords: variation sets; SES; child-directed speech

Introduction

While all typically developing children acquire native proficiency in their language, there are individual differences in the pace and trajectory of early language development. One important factor in explaining the variance in early language acquisition is the quantity and quality of the linguistic input children receive (e.g., Hart & Risley, 1995; Hoff, 2003; Huttenlocher, Haight, Bryk, Seltzer, & Lyons, 1991). Young children are exposed to a special register of speech with unique characteristics often called child-directed speech (CDS). Infants attend more to CDS compared to adult-to-adult speech (Cooper & Aslin, 1990; Pegg, Werker, & McLeod, 1992), and it has various properties that facilitate language learning (see Golinkoff, Can, Soderstrom, & Hirsh-Pasek, 2015; Soderstrom, 2007, for reviews). Children who hear more child-directed speech start talking earlier, have larger expressive vocabularies, and are earlier to acquire more complex syntactic structures (Hart & Risley, 1995; Huttenlocher, Waterfall, Vasilyeva, Vevea, & Hedges, 2010). They also learn new words faster than children who hear less child-directed speech (Huttenlocher *et al.*, 1991), and are more efficient in processing familiar words in real time (Weisleder & Fernald, 2013).

The effect of input variation on language development is also found at the group level. One of the key findings in the language acquisition literature is that socioeconomic status (SES) impacts the input children receive: high-SES children

generally receive more input and higher-quality input than lower-SES children, a pattern that has cascading effects on language development (Fernald, Marchman, & Weisleder, 2013; Hart and Risley, 1995; Hoff, 2006; Hoff, Laursen, & Tardif, 2002). In their seminal work, Hart and Risley (1995) found that higher-SES caregivers tend to speak more to their children: over the course of one week higher-SES children heard almost four times as many words as lower-SES children, a gap that remained constant over their first three years. SES also impacts the quality of speech to children. Higher-SES children are exposed to greater lexical diversity, more syntactic complexity, and a larger proportion of conversation-eliciting questions (Hart & Risley, 1995; Hoff, 2006; Hoff-Ginsberg, 1991; Huttenlocher *et al.*, 2010; Rowe, 2012; see Schwab & Lew-Williams, 2016b, for a recent review).

Importantly, these quantitative and qualitative differences are predictive of various language learning outcomes, leading to SES differences that emerge early on and persist across development. Hart and Risley (1995) found that, by the age of three, higher-SES children spoke twice as many words as the lower-SES children. Further work has shown that the productive vocabularies of high-SES children grow faster during their second year than those of mid-SES children (Hoff, 2003). Disparities in vocabulary size and online language processing between infants from higher- and lower-SES families are already evident at 18 months of age, resulting in a 6-month gap in processing speed between the two groups by the age of 24 months (Fernald *et al.*, 2013). There are additional output differences between high- and low-SES children in grammatical development, syntactic complexity, and communication skills (Hoff, 2006). Similarly, variation within SES is predictive of language abilities: low-SES children who heard more child-directed speech processed new words better and had larger expressive vocabularies compared to other low-SES children who heard fewer words (Weisleder & Fernald, 2013). Taken together, these findings suggest a strong link between SES, the kind of input children hear, and their language learning trajectory.

What characteristics of children's input are influenced by SES? The vast literature on CDS documents an effect of SES on several core properties of child-directed speech. We distinguish between three different characteristics: (1) the amount of speech, e.g., the number of words or utterances; (2) how rich the input is, reflected in the variety of words or constructions; and (3) how information is structured, reflected in how words and sentences are organized. Much of the work on SES-related differences has focused on the first two properties. Here, we ask how SES impacts the way information is structured in CDS. We know that SES impacts the amount of speech children hear (Fernald *et al.*, 2013; Hart & Risley, 1995; Hoff, 2006; Hoff *et al.*, 2002), and the diversity of lexical items and syntactic constructions (Huttenlocher *et al.*, 2010; Rowe, Leech, & Cabrera, 2016). However, child-directed speech is also characterized by certain ways of organizing words and sentences. Compared to adult-directed speech, child-directed speech is highly repetitive, containing frequently recurring phrases (e.g., *Where are you ___*; Cameron-Faulkner, Lieven, & Tomasello, 2003). This repetition can facilitate learning: the frequency of maternal self-repetitions and expansions is positively correlated with language growth, specifically verb phrase development (Fernald & Hurtado, 2006; Hoff-Ginsberg, 1986; Küntay & Slobin, 1996; Lew-Williams, Pelucchi, & Saffran, 2011; Newport, Gleitman, & Gleitman, 1977; Waterfall, 2006). CDS also includes additional repetitions of a specific sort: caregivers tend to use successive utterances with partial self-repetitions often called VARIATION SETS (Küntay & Slobin, 1996; Waterfall, 2006).

The following sequence (taken from the Howe corpus; Howe, 1981), is an example of a variation set, in which a mother addresses her two-year-old child:

- Yes yes, he's got toes.
- Four toes.
- Have you got toes, Richard?
- Where are your toes?
- Show me your toes.
- Come and show me your toes.
- Where are your toes?

Variation sets were shown to be frequent in CDS (Küntay & Slobin, 1996; Onnis, Waterfall, & Edelman, 2008). Brodsky, Waterfall, and Edelman (2007) showed that this characteristic cannot be the result of the bigram or trigram statistics of the corpus, thus concluding that variation sets are a unique feature of CDS. Variation sets are both frequent in CDS and related to better learning outcomes in both naturalistic and experimental settings. In a longitudinal corpus study, Waterfall (2006) found that nouns, verbs, and multiword constituents that appeared inside variation sets were produced earlier by children compared to ones that did not appear inside variation sets. In addition, she found that the proportion of variation sets moderately decreased during the second year of life (between ages 1;2 and 2;6), suggesting their usefulness for early language learning (Waterfall, 2006). In an artificial language learning study, Onnis *et al.* (2008) showed that adults who were exposed to variation sets (20% of their input) showed better word segmentation compared to a different group who received the same utterances without variation sets. In an experiment conducted on two-year-olds, children were better at learning new words when they were repeated across adjacent sentences rather than repeated throughout the input (Schwab & Lew-Williams, 2016a).

However, despite the facilitative role of variation sets for learning, and the growing evidence that SES impacts the language children are exposed to, no study to date has examined the use of variation sets in lower-SES groups, or compared their use between different high- and low-SES caregivers. In the current study, we compare the use of variation sets in child-directed speech of high- and low-SES mothers in two languages (Hebrew and English). In doing so, we aim to connect two distinct but related findings: those documenting the use of variation sets in child-directed speech and those illustrating the effect of SES on the properties of child-directed speech. If SES impacts the quality of children's input, as has been found for other linguistic measures, then we should see reduced use of variation sets in lower-SES input. Such a finding would show that the input children from different SES groups are exposed to differs not only in its quantity and richness but also in the way it is organized. An additional goal is to examine the use of variation sets in another language: the findings to date have been obtained from Turkish, English, and Swedish (Küntay & Slobin, 1996; Onnis *et al.*, 2008; Waterfall, 2006; Wirén, Nilsson Björkenstam, Grigonytė, & Cortes, 2016), though the samples for the non-English languages were very small. Looking at Hebrew will allow us to expand these findings to another language, using a larger number of children.

Method

Defining variation sets

The first studies on variation sets identified them manually as clusters of utterances that have the same communicative intent (Küntay & Slobin, 1996), or that refer to the same extra-linguistic event (Waterfall, 2006), and differ in at least one lexical item or in the order of the lexical items. This manual method draws on both linguistic and extra-linguistic cues, but it is highly labor intensive and cannot be used for large corpora. Brodsky *et al.* (2007) were the first to automatically extract variation sets from a corpus. They defined variation sets as two consecutive utterances that share at least one word, excluding a list of high-frequency words. Following Brodsky *et al.*, we automatically extracted variation sets along the same criteria (see full code at <<https://osf.io/3bcp5/>>). However, while Brodsky *et al.*, excluded from consideration a very limited set of high-frequency closed-class words, we used a stricter criterion. Following Waterfall (2006), who allowed only open-class words to anchor a variation set, our list of excluded words included fillers, pronouns, prepositions, auxiliaries, *wh*-questions, proper names, and a set of function words (see the full table of excluded words in the 'Appendix'). The motivation for using this stricter criterion was to exclude high-frequency words that tend to repeat regardless of context (such as auxiliaries or articles). Variation sets are matched over word-forms. The algorithm finds or expands a variation set by comparing two successive sentences at a time, meaning that a repeated word can change throughout the variation set, as long as there is a continuity of successive partial repetition (e.g., *–Oh, there's your hand. –Is that hand a horse? –I think I can see a horse. –Hello horse*). In addition, identical utterances were not defined as variation sets: a pair of utterances had to differ in either at least one word or in the ordering of the words in the sentence in order to qualify as a variation set (for example: *wow, a tiny dog!* and *A tiny dog, wow!* would be defined as a variation set even though they have the same lexical items since they differ in word order). Previous studies differed in whether they allowed intervening utterances between the repeated elements in each variation set: while Waterfall (2006) and Wirén *et al.* (2016) allowed intervening utterances, Brodsky *et al.* (2007) did not. We follow Brodsky *et al.*, in not allowing intervening utterances to prevent the length of the intervening utterances from impacting the proportion of words and utterances in variation sets in ways that are not theoretically motivated. Note that the mean length of utterance (MLU) is inherently related to the extraction of variation sets in the sense that longer sentences are more likely to have overlapping words with an adjacent sentence. This is not due to the specific algorithm used in this study, but results from the definition of variation sets as partial repetitions across consecutive utterances.

Finally, in order to validate our automated procedure, we had a subset of the transcripts (two from each language, 8% of the data) hand coded for variation sets by a research assistant. The RA was asked to manually identify variation sets along the same criteria used by the algorithm. The overlap between the variation sets found by the algorithm and identified by the human coder was striking: 99% of the variation sets identified by the research assistant were also extracted by the algorithm (159/160), indicating that the automated measure does as well as a human coder.

The corpora used

In order to check the influence of SES on the use of variation sets, we compared the proportion of variation sets in the speech of higher- and lower-SES parents. It is important to note that it is exceptionally difficult to find corpora that allow for a good comparison between high- and low-SES populations since very few corpora include lower-SES families. We eventually found two sets of corpora, in two languages (Hebrew and English; see Table 1). For English, we used the Howe Corpus (Howe, 1981). This corpus contains transcripts of 16 children, half middle-class and half working-class, who were recorded twice (once at age 1;6 to 1;8, and five months later at ages 1;11 to 2;1). SES was defined by Howe according to the father's occupation: in the low-SES sample the fathers had skilled or semi-skilled manual occupations, while in the high-SES sample they had professional or managerial occupations. Each mother and child were recorded for 40 minutes of free play with toys in their homes. One of recordings was only 16 minutes long (in the original corpora) and was excluded from the analysis. This left us with a total of 35,921 words of CDS from both sessions. The second corpus was in Hebrew and contained 18 filmed interactions of parents and their 18-month-old infants filmed in the lab. These were courtesy of Ariel Knafo's Developmental Social Psychology Lab (Abramson, Mankuta, Yagel, Gagne, & Knafo-Noam, 2014). Each film contained ten minutes of free interaction between parent and child with no experimenter present in the room. These interactions were transcribed by the first author as part of a different project, not looking at variation sets. SES here was defined by a combination of maternal education and income: families were defined as high-SES when maternal education was over 12 years (mean 17.8 years) and the income level was 4 or 5 (on a scale of 1–5). Families were defined as mid- to low-SES when maternal education was 12 years or under (mean 12 years) and the income level was 3 or less. This corpus contained 10,319 words of CDS. For each corpus, we calculated various measures that are known to be affected by SES: number of words spoken to child (averaged over children), lexical diversity (type/token ratio), and MLU (see Table 1).

The measure

We wanted to compare the proportion of variation sets between high- and low-SES caregivers. Following previous literature (Brodsky *et al.*, 2007; Waterfall, 2006), our dependent variables were the proportion of words (PW) and the proportion of utterances (PU) spoken to the child that appeared inside variation sets. This enabled us to control for the total number of words and utterances, such that differences in the frequency of variation sets could not be explained away simply by differences in the amount of CDS (which is known to differ with SES; Hart & Risley, 1995; Hoff *et al.*, 2002; Schwab & Lew-Williams, 2016b).

Results

English

We used a linear mixed-effect model to test our main prediction about the effect of SES on PW and PU (using the lme4 package; Bates, Maechler, Bolker, & Walker, 2015). We used the maximum random effect structure justified by the data that converged (Barr,

Table 1. Summary of Corpus Properties for Both SES Groups in the Two Languages

	Average number of words		Lexical diversity		MLU	
	High	Low	High	Low	High	Low
English N = 16, 35,921 words	1280	1045	0.25	0.25	4.06	3.62
Hebrew N = 18, 10,319 words	598	549	0.3	0.32	3.45	3.04

Table 2. Mixed-Effect Regression Model of PW for the English Corpora (Significant Variables in Bold)

	Estimate	Std. error	t-value	p-value
(Intercept)	0.29965	0.01440	20.815	<.001***
SES	0.03103	0.01440	2.155	.04*
Time of recording	0.01505	0.01044	1.441	.17
Gender	0.02193	0.01447	1.515	.15

Table 3. Mixed-Effect Regression Model of PU for the English Corpora (Significant Variables in Bold)

	Estimate	Std. error	t-value	p-value
(Intercept)	0.244304	0.011733	20.823	<.001***
SES	0.023206	0.011733	1.978	.06
Time of recording	0.017852	0.007842	2.276	.04*
Gender	0.020695	0.011798	1.754	.1

Levy, Scheepers, & Tily, 2013), and assessed significance using model comparisons. The model included fixed effects for SES, time of recording (first vs. second), and gender of child (male vs. female), and random intercepts for subjects (see Tables 2 and 3 for the full models). In line with our predictions, we found an SES-effect for PW and a marginal effect for PU, such that both were higher in the higher SES group [PW: 34% vs. 27% ($\beta = 0.03$, $SE = 0.01$, $T = 2.16$, model comparisons, $\chi^2(df = 1) = 4.13$, $p = .04$); PU: 27.6% vs. 22% ($\beta = 0.02$, $SE = 0.01$, $T = 1.98$, model comparisons, $\chi^2(df = 1) = 3.53$, $p = .06$)]. In addition, PU was found to be higher in the second recording, with more use of variation sets with older children ($\beta = 0.02$, $SE = 0.008$, $T = 2.2$, model comparisons, $\chi^2(df = 1) = 4.56$, $p = .03$). This finding was not expected, since these age bins are very close to each other (a difference of 5 months) and belong to the same age bin in other studies (Wirén *et al.*, 2016), or to ages in which no change in the use of variation sets was found (Waterfall, 2006). Since this effect was found for only one of our measures, we do not think any clear conclusions can be drawn from it. There was no interaction between SES and time of recording ($\beta = -0.0007$, $SE = 0.008$, $T = -0.09$), showing that SES affected the rate of variation sets in both

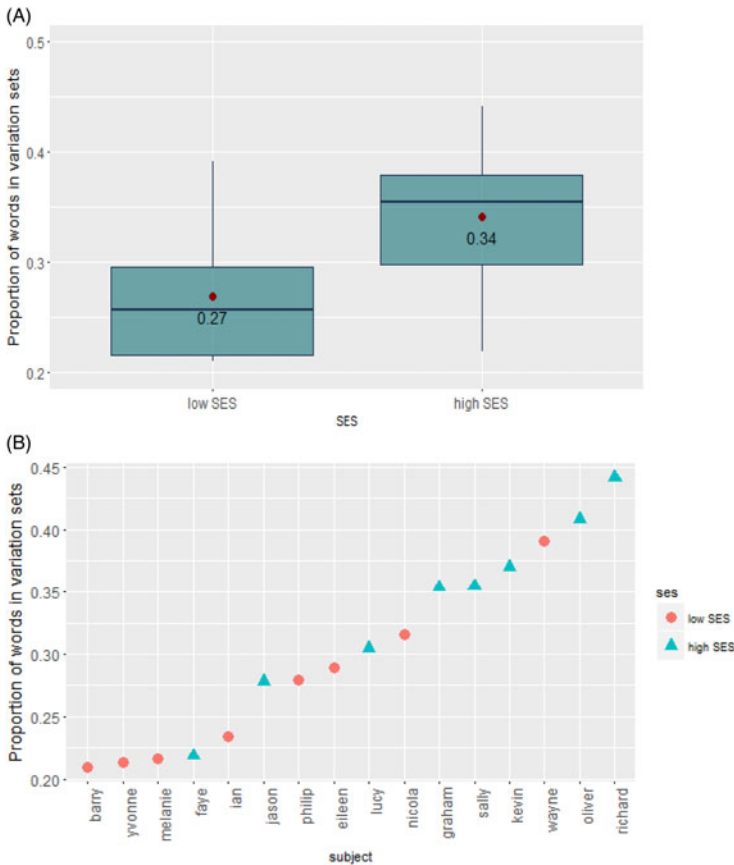


Figure 1. Proportion of words that appear in variation sets in low- and high-SES CDS in English corpora: (A) group level differences; (B) individual differences.

sessions. Figures 1 and 2 show the individual patterns of PW and PU for the different children. As can be seen, there is a low-SES child who received high scores, and a high-SES child who received low scores. These findings are not surprising since SES differences are group-level differences and, as such, do not necessarily apply to each individual in the group. Furthermore, such findings are expected under the assumption that SES is a proxy for different parameters that influence the input (Hoff *et al.*, 2002). This point will be further elaborated in the 'Discussion' section.

We ran another series of mixed-effect models to examine the effect of SES on other aspects of the input: MLU, lexical diversity, and number of words. Interestingly, we did not find the classical quantitative difference in number of words between the two groups: high-SES mothers did not talk more with their children compared to lower-SES mothers ($\beta = 96.65$, $SE = 129.6$, $T = 0.74$, model comparisons, $\chi^2(df = 1) = 0.55$, $p = .46$). There was also no difference in lexical diversity between the two groups ($\beta = 0.002$, $SE = 0.014$, $T = 0.19$, model comparisons, $\chi^2(df = 1) = 0.04$, $p = .85$).

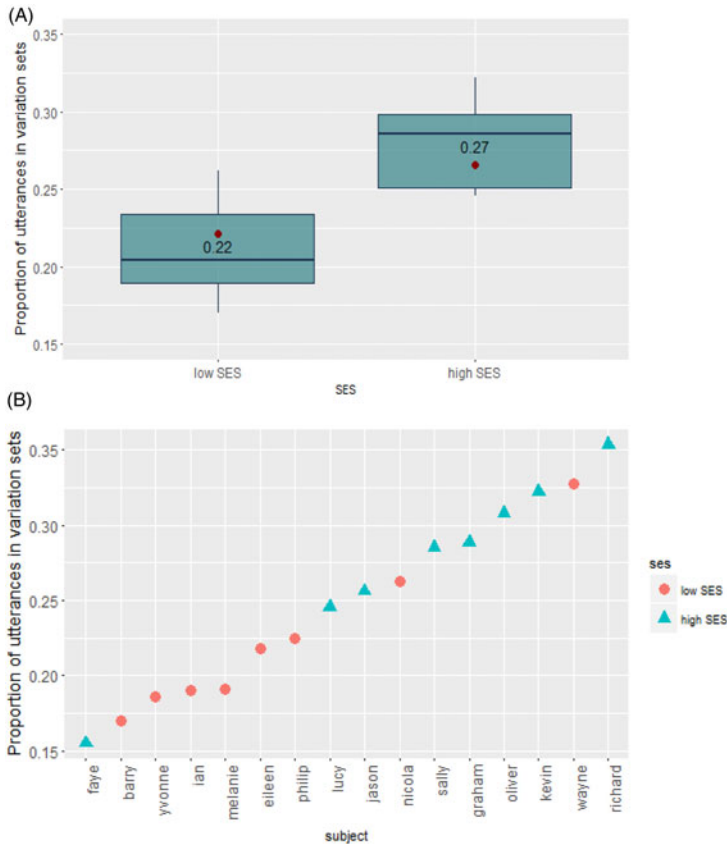


Figure 2. Proportion of utterances that appear in variation sets in low- and high-SES CDS in English corpora: (A) group level differences; (B) individual differences.

However, replicating previous findings (e.g., Hoff, 2003), we did find that MLU was higher in the higher-SES group ($\beta = 0.21$, $SE = 0.1$, $T = 2.12$, model comparisons, $\chi^2(df = 1) = 3.98$, $p = .046$). These results are compatible with other SES studies in which the differences found were not in the sheer amount of speech but rather in more qualitative characteristics of the input (e.g., McGillion, Pine, Herbert, & Matthews, 2017). While the two SES groups do differ in MLU (as we report in Table 1), the difference is in less than one word (3.62 vs., 4.08), meaning that it would have a very weak effect on the number of variation sets detected. There was no correlation between MLU and the two variation sets measures, indicating that the difference in MLU is not driving the effect (first recording: PW and MLU: $r = 0.27$, $p = .33$; PU and MLU: $r = 0.32$, $p = .23$. second recording: PW and MLU: $r = 0.44$, $p = .08$; PU and MLU: $r = 0.42$, $p = .1$).

To further explore the difference in the number of variation sets we conducted two additional analyses. First, we checked whether SES impacts the number of anchor words in variation sets to see if parents create variation sets around the same words, or whether the anchoring words are varied. To assess this, we calculated for each child

the type/token ratio of the words that are repeated inside variation sets, with higher scores (closer to 1) indicating greater lexical diversity of anchoring words. We found that both groups used a similar, and high, number of different words as anchors in their variation sets (0.75 vs. 0.78, $\beta = 0.02$, $SE = 0.02$, $T = 0.8$). Second, because we identified variation sets based on repetition of open-class elements, we wanted to make sure that their proportion did not differ between the two SES groups (such a difference could have led to detection of more variation sets in one group). We used the morphological tagging in the English corpora to calculate the average proportion of open-class words spoken to children in both SES groups (using the *childevs* package; Sanchez, Meylan, Braginsky, MacDonald, Yurovsky, & Frank, 2018). We found no difference between the two groups [44.8% vs. 45.3%, $t(df = 12.19) = -0.3$, $p = .76$], suggesting that the difference in the amount of variation sets could not be explained by lower-SES caregivers using fewer open-class words.

Hebrew

A simple linear regression was calculated to predict PW and PU based on SES and gender (we had only one recorded interaction per child–parent dyad in this dataset, so could not use mixed-effects model in this study). Here, too, we found that both measures were higher in the higher-SES group compared to in the mid- to low-SES group [PW: 40% vs. 32% ($\beta = 0.08$, $SE = 0.03$, $p = .04$); PU: 32% vs. 25% ($\beta = 0.07$, $SE = 0.03$, $p = .047$)]. Figures 3 and 4 show the individual patterns of PW and PU. One child from the high-SES group received very high scores (PW: 62%, PU: 55%). However, excluding this child from the analysis did not change the effect: the average PW changed to 37% and the average PU changed to 29% but the effect of SES was still significant (PW: $\beta = 0.05$, $SE = 0.025$, $p = .05$; PU: $\beta = 0.04$, $SE = 0.02$, $p = .03$). We also checked for classical measures of SES differences. As with the results from the English corpora, there was no difference in the number of words spoken to children between the two groups ($\beta = 48.7$, $SE = 89.7$, $p = .6$) or in their lexical diversity ($\beta = 0.01$, $SE = 0.02$, $p = .46$). We found a marginally significant difference of MLU ($\beta = 0.4$, $SE = 0.22$, $p = .095$). However, as in the English sample, the MLU difference here is less than one word (3.04 vs. 3.45), and there is no correlation between MLU and the two variation sets measures (PW and MLU: $r = 0.25$, $p = .3$; PU and MLU: $r = 0.42$, $p = .08$). This indicates that here too the difference in MLU is not driving the effect. While the proportion of PU and PW are slightly higher in the Hebrew corpus compared to the English one, this difference is most likely due to recording differences. Whereas the English recordings were collected at home for 40 minutes, the Hebrew ones were collected in the lab for 10 minutes. It is therefore hard to tell if the numerical difference is related to language or to the context of recording. Importantly, the corpora that were compared within each language had the same recording setting, precisely in order to control for other possible differences.

Finally, as in the English sample, we checked whether the number of anchor words differs between the two SES groups. Here too we found that both groups used a similar number of different anchor words in their variation sets (0.79 vs. 0.8, $\beta = -0.009$, $SE = 0.03$, $T = -0.27$), suggesting again that the difference is in the quantity of variation sets, not in kind. Examples of variation sets from both languages are given in Table 4.

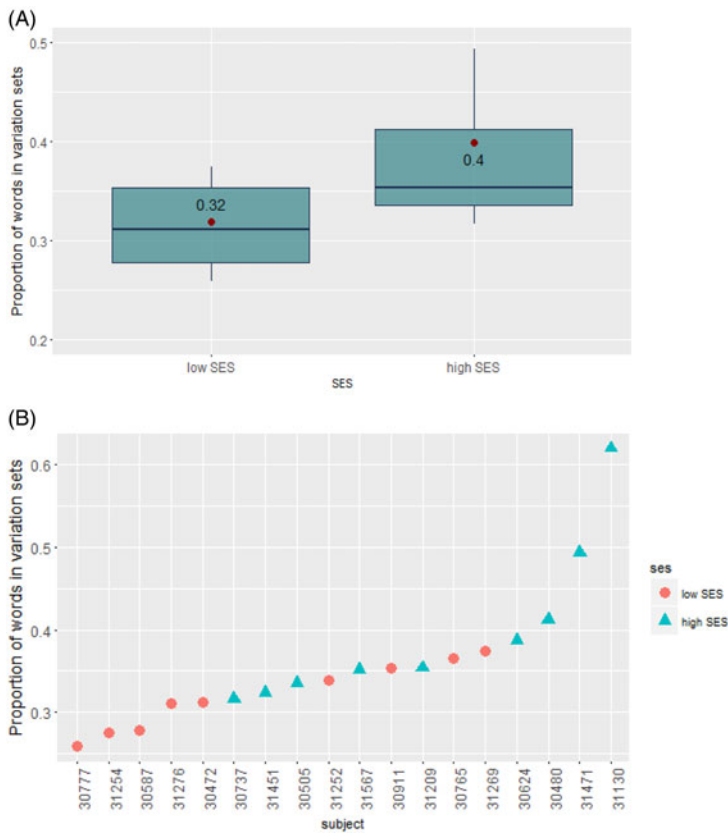


Figure 3. Proportion of words that appear in variation sets in mid- to low- and high-SES CDS in Hebrew corpora: (A) group level differences; (B) individual differences.

Discussion

The present study set out to examine the effect of SES on a structural feature of child-directed speech: the use of variation sets. While variation sets have been shown to impact language learning outcomes (Onnis *et al.*, 2008; Schwab & Lew-Williams, 2016a; Waterfall, 2006), very little work has examined their use by low-SES parents. Given the growing evidence that SES impacts many aspects of child-directed speech, we expected to find that the use of variation sets will be reduced in lower-SES input. Indeed, we found that high-SES children are exposed to more variation sets, with more of the words and utterances they hear appearing in clusters of successive self-repetitions. The effect of SES on the use of variation sets was found for two ages and in two typologically different languages. These findings show that SES impacts the structure of the information given in the input, as has been shown for other characteristics of CDS (Hart & Risley, 1995; Hoff *et al.*, 2002). Our findings mirror the pattern found by Waterfall (2006), who used manual identification of variation sets in a longitudinal corpus. Based on the analysis of eight children (four in each group), Waterfall found that mothers with advanced degrees produced more

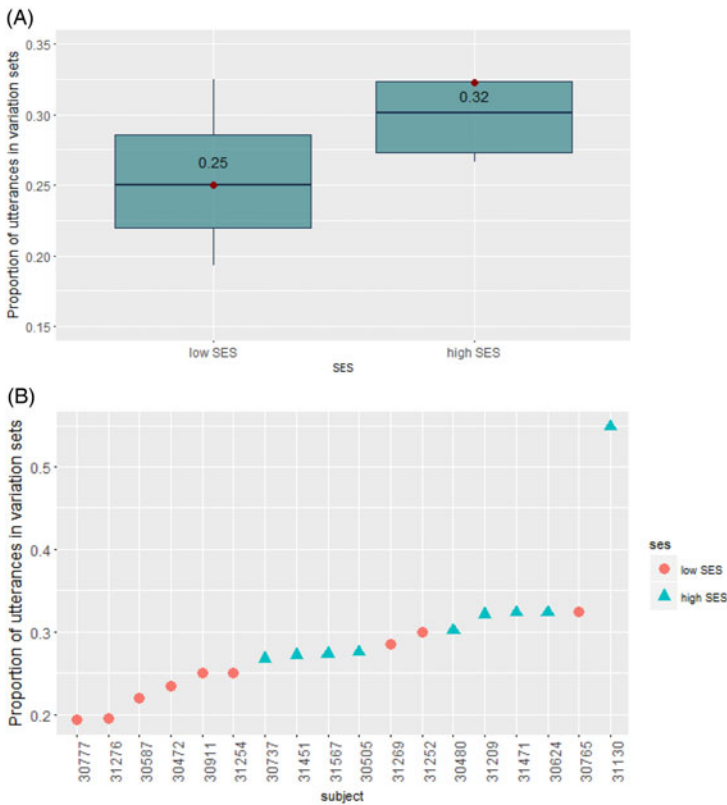


Figure 4. Proportion of utterances that appear in variation sets in mid- to low- and high-SES CDS in Hebrew corpora: (A) group level differences; (B) individual differences.

variation sets than mothers with high-school diplomas when talking with 18-month-old infants. Our results replicate this finding for a larger number of participants, at another age, and for another language, and strengthen the validity of using automatic extraction of variation sets instead of manual extraction. Importantly, while there was a difference in the proportion of variation sets, we found no difference in the diversity of the repeated words between the two groups, suggesting that the variation sets were similarly varied. Together, the findings highlight the prevalence of variation sets in child-directed speech and the impact of SES on their use.

Interestingly, we did not find SES effects on the total number of words children heard. This finding differs from what is often reported (Hoff *et al.*, 2002; Schwab & Lew-Williams, 2016b). This may be driven by the type of interaction recorded in our corpora. In both languages the transcripts are of relatively short interactions in experimental settings. That is, whether the recordings took place in the lab (Hebrew) or at home (English), parents were very much aware they were being recorded, which may have impacted the amount of speech they produced. Importantly, while the number of words did not differ, the use of variation sets did, suggesting that the organization of the input may vary even when the amount of speech and the

Table 4. Examples for Variation Sets from the Two Corpora Sets (Repeated Words Are Underlined)

English	Hebrew		
<i>Teddy's drinking lots of <u>tea</u>, isn't he?</i>	<i>ze</i> deter.M.'this' 'This is a glass, right'	<i><u>Kos</u></i> , F.'glass'	<i>naxon</i> disc.marker.'right'
<i>Do you want a cup of <u>tea</u> too?</i>	<i>naxon</i> , disc.marker.'right' 'Right, glass'	<i><u>Kos</u></i> F.'glass' 'right, glass'	
<i>Is Kevin going to have a cup of <u>tea</u>?</i>	<i>ma</i> quest.'what' 'What are we doing with the glass?'	<i>'osim</i> pres.M.1pl. 'do' with-F. 'glass'	<i>ba-<u>Kos</u>?</i> 'glass'

richness of the language used do not. This highlights the need to direct more attention to different kinds of properties of CDS, especially since the amount of speech has been found to be less predictive of language learning than other, more qualitative measures of the input (Hirsh-Pasek *et al.*, 2015; Pan, Rowe, Singer, & Snow, 2005). The current study does not demonstrate a link between the reduced use of variation sets and language learning outcomes. Future work will examine whether these differences independently predict later linguistic outcomes. Relying on findings on the beneficial nature of variation sets (Onnis *et al.*, 2008; Schwab & Lew-Williams, 2016a; Waterfall, 2006), differences in the proportion of variation sets in the input children receive should result in differences in their output.

While our findings illustrate an effect of SES on the use of variation sets, it is still largely unclear what exactly underlies SES differences in linguistic measures. SES is often considered a proxy for a cluster of factors that influence the type of input children receive from their parents (Hoff *et al.*, 2002). Different mediating factors, such as stress, time, and availability, and culturally transmitted knowledge and practices, have been proposed to be the crucial parameters that SES stands for (for a review see Schwab & Lew-Williams, 2016b). Since variation sets are clusters of local repetitions that typically illustrate a shared communicative goal, it could be that their reduced use stems from differences in communicative engagement or differences in object-labeling practices (Hoff *et al.*, 2002). This suggestion is compatible with previous findings according to which high-SES mothers produce more topic-continuing replies to their children compared to lower-SES mothers (Hoff, 2003). Related to this, SES may impact not only the quantity but also the type of variation sets used. Variation sets can serve different communicative functions (Küntay & Slobin, 2002). In the current paper, we collapsed over the different types. However, in other work, we ask if SES impacts the kinds of variation sets used with children. We classified variation sets extracted from an English corpus into three communicative functions (as defined by Küntay & Slobin) and showed that their distribution is impacted by SES (Tal & Arnon, 2018). While SES did not impact the amount of behavior-directing variation sets (e.g., *- Come on, make a wall. - Make a wall. - A big long wall*), high-SES parents used more information-providing variation sets compared to low-SES parents (e.g., *- That's a watering can. - Teeny-weeny watering can*). It is precisely this type of variation set that may have a stronger link to language learning: further work is needed to see if this type is more strongly

correlated with language outcomes. More generally, the findings highlight the impact of SES on the way information is organized in child-directed speech.

The current research on variation sets leaves several questions unanswered. The first is why variation sets are beneficial for learning in the first place. Several explanations have been proposed over the years. Brodsky *et al.* (2007) suggest that variation sets are optimally informative because they provide a balance between overlap and change (as opposed to sentence pairs that are completely different or entirely identical). This finding is in line with the claim that intermediate rates of information (not too simple and not too complex) are ideal for capturing humans' attention (Kidd, Piantadosi, & Aslin, 2012). An additional explanation suggests that variation sets are beneficial because they aid young learners in forming stable memories (Schwab & Lew-Williams, 2016a; Vlach & Johnson, 2013). Given the relatively limited short-term memory capacity of young children (e.g., Ross-Sheehy & Newman, 2015) and time pressures of language use in general (Christiansen & Chater, 2016), adjacent repetitions are preferable over non-adjacent ones. A third explanation is attention-based: repeated elements might become more salient and thus more learnable by the virtue of their adjacency (Schwab & Lew-Williams, 2016a). In accordance with these suggestions, findings from the statistical learning literature show learning advantages for relying on local relations compared to global ones (Onnis, Edelman, & Waterfall, 2011). The second, and related, question has to do with the function of variation sets in CDS. Are variation sets used to introduce new words (as in Schwab & Lew-Williams, 2016a)? Or do they facilitate interaction more generally? A recent study provides some initial support for the latter explanation: parents of toddlers with Autistic Spectrum Disorders (ASD) – who are generally less talkative – use more variation sets when they talk to their children compared to parents of typically developing toddlers (Onnis, Edelman, Esposito, & Venuti, unpublished observations). In addition, the current study is limited in that it is based on two sets of corpora that contain short, and somewhat unnatural, interactions (one is lab-based and the second is set in the home but with an experimenter present). These analyses need to be extended to larger corpora and more naturalistic settings. To conclude, the findings of this study highlight the need to examine the effect of SES on how information is structured in child-directed speech. More broadly, it calls for bridging between two related literatures, as the literature of CDS provides many insights regarding what qualifies as high-quality linguistic input (Schwab & Lew-Williams, 2016b). Thus, further integration of the CDS and the SES literature is promising in helping us to better understand individual and socially driven differences in early language acquisition.

Acknowledgements. We wish to thank Zohar Aizenbud for her help with coding. The research was funded by the Israeli Science Foundation grant number 584/16 awarded to the second author, and by Starting Grant 240994 from the European Research Council (to Ariel Knafo).

References

- Abramson, L., Mankuta, D., Yagel, S., Gagne, J. R., & Knafo-Noam, A. (2014). Mothers' and fathers' prenatal agreement and differences regarding postnatal parenting. *Parenting, 14*(3/4), 133–40.
- Barr, D. J., Levy, R., Scheepers, C., & Tily, H. J. (2013). Random effects structure for confirmatory hypothesis testing: keep it maximal. *Journal of Memory and Language, 68*(3), 255–78.
- Bates, D., Mächler, M., Bolker, B., & Walker, S. (2015). Fitting linear mixed-effects models using lme4. *Journal of Statistical Software, 67*, 1–48. Retrieved from <<http://dx.doi.org/10.18637/jss.v067.i01>>.

- Brodsky, P., Waterfall, H., & Edelman, S.** (2007). Characterizing motherese: on the computational structure of child-directed language. In *Proceedings of the Cognitive Science Society*, 29(29). Retrieved from <<https://escholarship.org/uc/item/54k371nk>>
- Cameron-Faulkner, T., Lieven, E., & Tomasello, M.** (2003). A construction based analysis of child directed speech. *Cognitive Science*, 27(6), 843–73.
- Christiansen, M. H., & Chater, N.** (2016). The Now-or-Never bottleneck: a fundamental constraint on language. *Behavioral and Brain Sciences*, 39(e62). Retrieved from <<https://doi.org/10.1017/S0140525X1500031X>>.
- Cooper, R. P., & Aslin, R. N.** (1990). Preference for infant-directed speech in the first month after birth. *Child Development*, 61, 1584–95.
- Fernald, A., & Hurtado, N.** (2006). Names in frames: infants interpret words in sentence frames faster than words in isolation. *Developmental Science*, 9(3), F33–F40.
- Fernald, A., Marchman, V. A., & Weisleder, A.** (2013). SES differences in language processing skill and vocabulary are evident at 18 months. *Developmental Science*, 16(2), 234–48.
- Golinkoff, R. M., Can, D. D., Soderstrom, M., & Hirsh-Pasek, K.** (2015). (Baby)talk to me: the social context of infant-directed speech and its effects on early language acquisition. *Current Directions in Psychological Science*, 24(5), 339–44.
- Hart, B., & Risley, T.** (1995). *Meaningful differences in the everyday experience of young American children*. Baltimore: Brookes.
- Hirsh-Pasek, K., Adamson, L. B., Bakeman, R., Owen, M. T., Golinkoff, R. M., Pace, A., Yust, P. K. S., & Suma, K.** (2015). The contribution of early communication quality to low-income children's language success. *Psychological Science*, 26(7), 1071–83.
- Hoff, E.** (2003). The specificity of environmental influence: socioeconomic status affects early vocabulary development via maternal speech. *Child Development*, 74(5), 1368–78.
- Hoff, E.** (2006). How social contexts support and shape language development. *Developmental Review*, 26(1), 55–88.
- Hoff, E., Laursen, B., Tardif, T.** (2002). Socioeconomic status and parenting. In M. H. Bornstein (Ed.), *Handbook of Parenting Volume 2: Biology and Ecology of Parenting* (pp. 231–52). Mahwah, NJ: Lawrence Erlbaum Publishing.
- Hoff-Ginsberg, E.** (1986). Function and structure in maternal speech: their relation to the child's development of syntax. *Developmental Psychology*, 22(2), 155–63.
- Hoff-Ginsberg, E.** (1991). Mother-child conversation in different social classes and communicative settings. *Child Development*, 62, 782–96.
- Howe, C.** (1981). *Acquiring language in a conversational context*. New York: Academic Press.
- Huttenlocher, J., Haight, W., Bryk, A., Seltzer, M., & Lyons, T.** (1991). Early vocabulary growth: relation to language input and gender. *Developmental Psychology*, 27(1), 236–48.
- Huttenlocher, J., Waterfall, H., Vasilyeva, M., Vevea, J., & Hedges, L. V.** (2010). Sources of variability in children's language growth. *Cognitive Psychology*, 61, 343–65.
- Kidd, C., Piantadosi, S. T., & Aslin, R. N.** (2012). The Goldilocks effect: human infants allocate attention to visual sequences that are neither too simple nor too complex. *PLoS one*, 7(5), e36399. doi:10.1371/journal.pone.0036399.
- Küntay, A., & Slobin, D. I.** (1996). Listening to a Turkish mother: some puzzles for acquisition. In D. I. Slobin, J. Gerhardt, A. Kyratzis, & J. Guo (Eds.), *Social interaction, social context, and language: essays in honor of Susan Ervin-Tripp* (pp. 265–86). Hillsdale, NJ: Lawrence Erlbaum Associates.
- Küntay, A., & Slobin, D. I.** (2002). Putting interaction back into child language: examples from Turkish. *Psychology of Language and Communication*, 6(1), 5–14.
- Lew-Williams, C., Pelucchi, B., & Saffran, J. R.** (2011). Isolated words enhance statistical language learning in infancy. *Developmental Science*, 14(6), 1323–9.
- McGillion, M., Pine, J. M., Herbert, J. S., & Matthews, D.** (2017). A randomised controlled trial to test the effect of promoting caregiver contingent talk on language development in infants from diverse socioeconomic status backgrounds. *Journal of Child Psychology and Psychiatry*, 58(10), 1122–31.
- Newport, E., Gleitman, H., & Gleitman, L.** (1977). Mother, I'd rather do it myself: some effects and non-effects of maternal speech style. In C. E. Snow & C. A. Ferguson (Eds.), *Talking to children* (pp. 109–49). Cambridge University Press.

- Onnis, L., Edelman, S., & Waterfall, H.** (2011). Local statistical learning under cross-situational uncertainty. *Proceedings of the Cognitive Science Society*, 33(33). Retrieved from <<https://escholarship.org/uc/item/8vb661ts>> .
- Onnis, L., Waterfall, H. R., & Edelman, S.** (2008). Learn locally, act globally: learning language from variation set cues. *Cognition*, 109(3), 423–30.
- Pan, B. A., Rowe, M. L., Singer, J. D., & Snow, C. E.** (2005). Maternal correlates of growth in toddler vocabulary production in low-income families. *Child Development*, 76(4), 763–82.
- Pegg, J. E., Werker, J. F., & McLeod, P. J.** (1992). Preference for infant-directed over adult-directed speech: evidence from 7-week-old infants. *Infant Behavior and Development*, 15, 325–45.
- Ross-Sheehy, S., & Newman, R. S.** (2015). Infant auditory short-term memory for non-linguistic sounds. *Journal of Experimental Child Psychology*, 132, 51–64.
- Rowe, M. L.** (2012). A longitudinal investigation of the role of quantity and quality of child-directed speech in vocabulary development. *Child Development*, 83, 1762–74.
- Rowe, M. L., Leech, K. A., & Cabrera, N.** (2016). Going beyond input quantity: wh-questions matter for toddlers' language and cognitive development. *Cognitive Science*, 41, 162–79.
- Sanchez, A., Meylan, S., Braginsky, M., MacDonald, K., Yurovsky, D., & Frank, M. C.** (2018). childes-db: a flexible and reproducible interface to the Child Language Data Exchange System (CHILDES). Retrieved from <[psyarxiv.com/93mwx](https://arxiv.org/abs/1803.09824)>.
- Schwab, J. F., & Lew-Williams, C.** (2016a). Repetition across successive sentences facilitates young children's word learning. *Developmental Psychology*, 52(6), 879–86.
- Schwab, J. F., & Lew-Williams, C.** (2016b). Language learning, socioeconomic status, and child-directed speech. *Wiley Interdisciplinary Reviews: Cognitive Science*, 7(4), 264–75.
- Soderstrom, M.** (2007). Beyond babytalk: re-evaluating the nature and content of speech input to preverbal infants. *Developmental Review*, 27(4), 501–32.
- Tal, S., & Arnon, I.** (2018). SES differences in the communicative functions of variation sets. In A. B. Bertolini & M. J. Kaplan (Eds.), *BUCLD 42: Proceedings of the 42nd Annual Boston University Conference on Language Development* (pp. 736–49). Boston, MA: Cascadilla Press.
- Vlach, H. A., & Johnson, S. P.** (2013). Memory constraints on infants' cross-situational statistical learning. *Cognition*, 127(3), 375–82.
- Waterfall, H. R.** (2006). *A little change is a good thing: feature theory, language acquisition and variation sets* (Doctoral dissertation). University of Chicago.
- Weisleder, A., & Fernald, A.** (2013). Talking to children matters: early language experience strengthens processing and builds vocabulary. *Psychological Science* 24(11), 2143–52.
- Wirén, M., Nilsson Björkenstam, K., Grigonytė, G., & Cortes, E. E.** (2016). Longitudinal studies of variation sets in child-directed speech. In *The 54th Annual Meeting of the Association for Computational Linguistics, Berlin, Germany, August 11, 2016* (pp. 44–52). Association for Computational Linguistics.

Appendix

	English	Hebrew
Pronouns	<i>I, I'm, I'll, me, my, you, your, you're, you'd, you've, you'll, we, we'll, she, her, hers, she's, he, he's, his, him, they, they're, them, 'em, it, it's</i>	<i>ani</i> 'I', <i>at</i> 'you-FEM', <i>ata</i> 'you-MASC', <i>hi</i> 'she', <i>hu</i> 'he', <i>anaxnu</i> 'we', <i>atem</i> 'you-PLURAL-MASC', <i>aten</i> 'you-PLURAL-FEM', <i>hem</i> 'they-MASC', <i>hen</i> 'they-FEM'
Indefinite pronouns	<i>all, another, any, anybody, anyone, anything, each, everybody, everyone, everything, few, many, nobody, one, none, several, some, somebody, someone</i>	<i>Kol</i> 'every/all/any/each', <i>mishehu</i> 'anyone/somebody', <i>mashehu</i> 'something/anything', <i>qcat</i> 'few/some', <i>harbe</i> 'many', <i>kama</i> 'several/some'
Demonstratives	<i>this, that, that's, there, there's, here, those, these</i>	<i>ze</i> 'this-MASC', <i>zot</i> 'this-FEM', <i>hine</i> 'there it is', <i>po</i> 'here', <i>kan</i> 'here'
Articles	<i>the, a, an</i>	<i>Ha</i> 'the'
Auxiliaries	<i>is, isn't, are, aren't, was, wasn't, were, weren't, do, don't, does, doesn't, will, won't, be, am, can, can't, could, would, should, gonna, did, didn't, must, mustn't, shall, let's</i>	<i>bo</i> 'come-MASC' (used in Hebrew as the auxiliary 'lets'), <i>boii</i> 'come-FEM' (used in Hebrew as the auxiliary 'lets')
Prepositions	<i>to, in, on, of, with, as, at, for</i>	<i>le</i> 'to', <i>lexa</i> 'to you-MASC', <i>lax</i> 'to you-FEM', <i>lo</i> 'to him', <i>la</i> 'to her', <i>lanu</i> 'to us', <i>li</i> 'to me', <i>be</i> 'in', <i>'al</i> 'on', <i>shel</i> 'of', <i>'im</i> 'with', <i>kmo</i> 'as', <i>et</i> 'ACC', <i>mi</i> 'from'
Negations, prohibitions, and affirmations	<i>no, not, yes, yeah, okay</i>	<i>loh</i> 'no', <i>eyn</i> 'there isn't', <i>asur</i> 'must not', <i>al</i> 'do not', <i>ken</i> 'yes', <i>naxon</i> 'right', <i>yofi</i> 'great', <i>nununu</i> 'admonition word', <i>kol hakavod</i> 'well done'
Connectives	<i>or, and</i>	<i>o</i> 'or', <i>ve</i> 'and', <i>she</i> 'subordinator'
WH-questions	<i>what, what's, where, where's, when, when's, which, who, who's, why, why's, how, how's</i>	<i>ma</i> 'what', <i>eifo</i> 'where', <i>matay</i> 'when', <i>eyze</i> 'which', <i>mi</i> 'who', <i>lean</i> 'where to', <i>lama</i> 'why', <i>ex</i> 'how'
Disfluencies	<i>Um, oh, huh, ah, ow</i>	<i>uy, ah, um</i>
Interjections and fillers	<i>wow</i>	<i>wow</i> 'wow', <i>way</i> 'excitement word', <i>nu</i> 'urging word', <i>kaxa</i> 'like this', <i>zehu</i> 'that's it', <i>oyoyoy</i> 'oh no', <i>oy</i> 'oh', <i>hopa</i> 'hop!', <i>rega</i> 'hold on' (used often as a filler in Hebrew)

Cite this article: Tal S, Arnon I (2018). SES effects on the use of variation sets in child-directed speech. *Journal of Child Language* 45, 1423–1438. <https://doi.org/10.1017/S0305000918000223>