

INFECTION CONTROL & HOSPITAL EPIDEMIOLOGY

VOLUME 28, NUMBER 6

JUNE 2007

ORIGINAL ARTICLES

- 641 Impact of Different Methods of Feedback to Clinicians After Postprescription Antimicrobial Review Based on the Centers for Disease Control and Prevention's 12 Steps to Prevent Antimicrobial Resistance Among Hospitalized Adults** • Sara E. Cosgrove, MD, MS; Alpa Patel, PharmD; Xiaoyan Song, MD; Robert E. Miller, MD; Kathleen Speck, MPH; Amy Banowitz, BS; Rachel Hadler, BA; Ronda L. Sinkowitz-Cochran, MPH; Denise M. Cardo, MD; Arjun Srinivasan, MD
- 647 Impact of Different Methods for Describing the Extent of Prior Antibiotic Exposure on the Association Between Antibiotic Use and Antibiotic-Resistant Infection** • Emily P. Hyle, MD; Warren B. Bilker, PhD; Leanne B. Gasink, MD, MSCE; Ebbing Lautenbach, MD, MPH, MSCE
- 655 Increase in the Rate of Sternal Surgical Site Infection After Coronary Artery Bypass Graft: A Marker of Higher Severity of Illness** • Mohamad G. Fakih, MD, MPH; Mamta Sharma, MD; Riad Khatib, MD; Dorine Berriel-Cass, RN, MA; Susan Meisner, RN; Steven Harrington, MD; Louis Saravolatz, MD, MACP
- 661 Exposure to Pulmonary Tuberculosis in a Neonatal Intensive Care Unit: Unique Aspects of Contact Investigation and Management of Hospitalized Neonates** • Joseph Jacob Nania, MD; Jena Skinner, RN; Kathie Wilkerson, RN; Jon V. Warkentin, MD, MPH; Valerie Thayer, RN; Melanie Swift, MD; William Schaffner, MD; Thomas R. Talbot, MD, MPH
- 666 Value of Performing Active Surveillance Cultures on Intensive Care Unit Discharge for Detection of Methicillin-Resistant *Staphylococcus aureus*** • Jon P. Furuno, PhD; Anthony D. Harris, MD, MPH; Marc-Oliver Wright, MS, MT (ASCP); David M. Hartley, PhD, MPH; Jessina C. McGregor, PhD; Holly D. Gaff, PhD; Joan N. Hebden, MS, RN; Harold C. Standiford, MD; Eli N. Perencevich, MD, MS
- 671 Epidemiology and Genetic Diversity of Methicillin-Resistant *Staphylococcus aureus* Strains in Residential Care Homes for Elderly Persons in Hong Kong** • Pak-Leung Ho, FACP; Teresa K. F. Wang, MD; Patricia Ching, RN; Gannon C. Mak, MPhil; Eileen Lai, MSc; Wing-Cheong Yam, PhD; Wing-Hong Seto, MD
- 679 Eradication of Amebiasis in a Large Institution for Adults With Mental Retardation in Taiwan** • Shih-Bin Su, MD; How-Ran Guo, MD, ScD; Yin-Ching Chuang, MD; Kow-Ton Chen, MD, PhD; Ching-Yih Lin, MD
- 684 Increased Rate of Catheter-Related Bloodstream Infection Associated With Use of a Needleless Mechanical Valve Device at a Long-Term Acute Care Hospital** • Cassandra D. Salgado, MD, MS; Libby Chinnes, RN, BSN, CIC; Tammy H. Paczesny, RN; J. Robert Cantey, MD
- 689 Effect of Education on the Rate of and the Understanding of Risk Factors for Intravascular Catheter-Related Infections** • G. Yilmaz, PhD; R. Caylan, PhD; K. Aydin, PhD; M. Topbas, PhD; I. Koksak, PhD
- 695 Assessment of Adverse Events Associated With Antiretroviral Regimens for Postexposure Prophylaxis for Occupational and Nonoccupational Exposures to Prevent Transmission of Human Immunodeficiency Virus** • A. Luque, MD; S. Hulse, BS; D. Wang, PhD; U. Shahzad, MD; E. Tanzman, MD; S. Antenozzi, BS; B. Smith, BS
- 702 Risk of Transmission Associated With Live Attenuated Vaccines Given to Healthy Persons Caring for or Residing With an Immunocompromised Patient** • Mini Kamboj, MD; Kent A. Sepkowitz, MD

CONTENTS CONTINUED INSIDE



THE OFFICIAL JOURNAL OF THE SOCIETY FOR HEALTHCARE EPIDEMIOLOGY OF AMERICA

THE UNIVERSITY OF CHICAGO PRESS

VAP

IS A TOUGH
ENEMY.

Are you doing
all you can to
ZAP VAP®?

You are when you add the *Mallinckrodt®*
Hi-Lo Evac® endotracheal tube to your
arsenal of VAP interventions.

Clinical studies show hospitals
that added the *Hi-Lo Evac* tube
to existing VAP intervention
efforts, such as head of the bed
elevation and regular oral care, real-
ized **additional** VAP rate reductions up
to **74 percent***. Continuous aspiration
of subglottic secretions (CASS) with the
Hi-Lo Evac endotracheal tube is clinically
proven to significantly reduce VAP – a claim
no other endotracheal tube can make.

Need more proof? Call 1-800-NELLCOR
or go to www.ZAPVAP.com to read published
VAP guidelines and improvement stories
using the *Hi-Lo Evac* endotracheal tube.

* Keith DD, et al. Ventilator-associated Pneumonia:
Improved Clinical Outcomes. *Journal of Nursing
Care Quality*. 2004;19(4):328-333

MALLINCKRODT

© 2006 Nellcor Puritan Bennett Inc. All rights reserved.

tyco
Healthcare

Nellcor

CLINICALLY PROVEN • CONSISTENTLY RECOMMENDED • COST EFFECTIVE

INFECTION CONTROL & HOSPITAL EPIDEMIOLOGY

VOLUME 28, NUMBER 6

JUNE 2007

CONTENTS CONTINUED FROM COVER

- 708 Impact of *Bordetella pertussis* Exposures on a Massachusetts Tertiary Care Medical System** • Iva Zivna, MD; Diana Bergin, MS, APRN BC; Joanne Casavant, MS, APRN BC; Sally Fontecchio, RN, BSNEd, CIC; Susan Nelson, RN, MSPH, CIC; Anita Kelley, RN, MSN, CIC; Sandra Mathis, RN, MPH, CIC; Zita Melvin, RN, BSN, CIC; Rosemarie Erlichman, RN, BSN, CIC; Richard T. Ellison III, MD
- 713 Clinical and Economic Impact of Multidrug Resistance in Nosocomial *Acinetobacter baumannii* Bacteremia** • Nan-Yao Lee, MD; Hsin-Chun Lee, MD; Nai-Ying Ko, RN, PhD; Chia-Ming Chang, MD; Hsin-I Shih, MD; Chi-Jung Wu, MD; Wen-Chien Ko, MD
- CONCISE COMMUNICATIONS
- 720 *Acinetobacter* Skin Carriage Among US Army Soldiers Deployed in Iraq** • Matthew E. Griffith, MD; Donald R. Lazarus, MD; Paul B. Mann, PhD; John A. Boger, MD; Duane R. Hospenthal, MD, PhD; Clinton K. Murray, MD
- 723 Importation of *Acinetobacter baumannii* Into a Burn Unit: A Recurrent Outbreak of Infection Associated With Widespread Environmental Contamination** • Giorgio Zanetti, MD, MS; Dominique S. Blanc, PhD; Isabelle Federli, RN, CIC; Wassim Raffoul, MD; Christiane Petignat, MD; Philippe Maravic, RN; Patrick Francioli, MD; Mette M. Berger, MD, PhD
- 726 Colonization With Multidrug-Resistant Organisms in Evacuees After Hurricane Katrina** • Ulrich Seybold, MD; Nancy White, RN; Yun F. Wang, PhD; J. Sue Halvosa, MSc; Henry M. Blumberg, MD
- 730 Evaluation of the Microbiology of Soft-Tissue Abscesses in the Era of Community-Associated Strains of Methicillin-Resistant *Staphylococcus aureus*: An Argument for Empirical Contact Precautions** • Thomas R. Talbot, MD, MPH; Joseph J. Nania, MD; Patty W. Wright, MD; Ian Jones, MD; Dominik Aronsky, MD, PhD
- 733 Acquisition of Methicillin-Resistant *Staphylococcus aureus* in the Acute Care Setting: Incidence and Risk Factors** • Christophe Rioux, MD; Laurence Armand-Lefevre, MD; Wafaa Guerinot, RT; Antoine Andreumont, MD, PhD; Jean-Christophe Lucet, MD, PhD
- 737 Nasal Carriage of *Staphylococcus aureus*: Which Sequence Types Do Orthopedic Surgical Healthcare Workers Carry?** • Inge Skråmm, MD; Aina Elisabeth Fossum Moen, MSc; Kjetil Alm-Kristiansen, MSc; Geir Bukholm, MD, PhD
- 740 Risk of Nosocomial Transmission of Nipah Virus in a Bangladesh Hospital** • Emily S. Gurley, MPH; Joel M. Montgomery, MSc, PhD; M. Jahangir Hossain, MBBS, MSc; M. Rafiqul Islam, MBBS, MPhil; M. Abdur Rahim Molla, MPhil, MPH; S. M. Shamsuzzaman, MPhil, PhD; Kazi Akram, MBBS, MSc; Kamruz Zaman, MBBS, MPH; Nima Asgari, MD; James A. Comer, PhD; Abul Kalam Azad, MBBS, MPhil; Pierre E. Rollin, MD; Thomas G. Ksiazek, PhD; Robert F. Breiman, MD
- 743 A Cluster of Hemodialysis-Related Bacteremia Linked to Artificial Fingernails** • Fred M. Gordin, MD; Maureen E. Schultz, RN, CIC; Ruth Huber, RN, CIC; Sabiha Zubairi, MS; Frida Stock; Joseph Kariyil, MD
- 745 Hand Rub-Associated Fire Incidents During 25,038 Hospital-Years in Germany** • Axel Kramer, MD; Günter Kampf, MD
- 747 Nurses' Intentions to Wear Gloves During Venipuncture Procedures: A Behavioral Psychology Perspective** • Suhail A. R. Doi, PhD, FRCP; María Florencia Amigó, PhD

CONTENTS CONTINUED ON NEXT PAGE

INFECTION CONTROL & HOSPITAL EPIDEMIOLOGY

VOLUME 28, NUMBER 6

JUNE 2007

CONTENTS CONTINUED FROM PREVIOUS PAGE

- 751 **Use of the Haddon Matrix as a Tool for Assessing Risk Factors for Sharps Injury in Emergency Departments in the United Arab Emirates** • M. Ganczak, MD, DrMed; P. Barss, MD, ScD, MPH, FACPM, FRCPC; A. Al-Marashda; A. Al-Marzouqi; N. Al-Kuwaiti
- 755 **Contamination of Peripheral Hematopoietic Stem Cell Products With a *Mycobacterium mucogenicum*-Related Pathogen** • Imad Kassis, MD; Ilana Oren, MD; Sima Davidson, PhD; Renato Finkelstein, MD; Galit Rabino, MA; Tami Katz, PhD; Hannah Sprecher, PhD
- 758 **Pseudo-outbreak of *Bordetella bronchiseptica* Infection Associated With Contaminated Rabbit Blood Used as a Broth Culture Supplement** • David P. Calfee, MD, MS; John Kornblum, PhD; Stephen G. Jenkins, PhD

LETTERS TO THE EDITOR

- 761 **Sharp-Device Injuries and Perceived Risk of Infection With Bloodborne Pathogens Among Healthcare Workers in Rural Kenya** • Nkuchia M. M'ikanatha, DrPH, MPH; Stanley G. Imunya, MPH; David N. Fisman, MD, MPH; Kathleen G. Julian, MD
- 763 **Pseudo-outbreak of *Ochrobactrum anthropi* Bacteremia Related to Cross-Contamination From Erythrocyte Sedimentation Tubes** • Jaime A. Labarca, MD; Patricia Garcia, MD; María Elvira Balcells, MD, MSc; Gabriela de la Cerda, RN, CIC; Ana María Salinas, MT, MSc; Juan Carlos Román, MT; Ana María Guzmán, MD; Carlos M. Pérez, MD
- 765 **A Controlled Study of *Legionella* Concentrations in Water from Faucets with Aerators or Laminar Water Flow Devices** • Wen-Kuei Huang, MS; Yusen Eason Lin, PhD, MBA

An Official Publication of the Society for Healthcare Epidemiology of America

EDITOR

Suzanne F. Bradley, MD • Ann Arbor, MI

DEPUTY EDITOR

Carol A. Kauffman, MD • Ann Arbor, MI

SENIOR ASSOCIATE EDITORS

C. Glen Mayhall, MD • Galveston, TX
Gina Pugliese, RN, MS • Chicago, IL
William Schaffner, MD • Nashville, TN

ASSOCIATE EDITORS

Ebbing Lautenbach, MD, MPH • Philadelphia, PA
Preeti N. Malani, MD, MSJ • Ann Arbor, MI
David Weber, MD, MPH • Chapel Hill, NC

STATISTICS CONSULTANT

Rodney L. Dunn, MS • Ann Arbor, MI

**SECTION EDITOR FOR GUIDELINES,
POSITION PAPERS, AND INVITED REVIEWS**

Carol Chenoweth, MD • Ann Arbor, MI

MANAGING EDITOR

Gordon Rudy, PhD, ELS • Chicago, IL

PAST EDITORS

Infection Control

Richard P. Wenzel, MD, 1980–1990 (vols. 1–11)

Infection Control and Hospital Epidemiology

Richard P. Wenzel, MD, 1991–1992 (vols. 12 and 13)

Michael D. Decker, MD, 1993–2001 (vols. 14–22)

Barry M. Farr, MD, 2002–2004 (vols. 23–25)

William R. Jarvis, MD, 2005–2006 (vols. 26 and 27)

EDITORIAL ADVISORY BOARD

Miriam Alter, PhD, MD • Atlanta, GA

Lennox Archibald, MD, FRCP • Alachua, FL

Hilary Babcock, MD • St. Louis, MO

Elise M. Beltrami, MD, MPH • Decatur, GA

David Birnbaum, PhD, MPH • Sidney,
British Columbia

Marc J. M. Bonten, MD, PhD • Utrecht,
The Netherlands

John M. Boyce, MD • New Haven, CT

Christian Brun-Buisson, MD • Creteil, France

John P. Burke, MD • Salt Lake City, UT

David P. Calfee, MD, MS • New York, NY

Yehuda Carmeli, MD, MPH • Tel Aviv, Israel

Sara E. Cosgrove, MD, MS • Baltimore, MD

Donald E. Craven, MD • Burlington, MA

Burke A. Cunha, MD • Mineola, NY

Erika D'Agata, MD, MPH • Boston, MA

Patch Dellinger, MD • Seattle, WA

Daniel Diekema, MD • Iowa City, IA

Charles E. Edmiston, Jr., PhD • Milwaukee, WI

Theodore C. Eickhoff, MD • Denver, CO

Jean Yves Fagon, MD, MPH • Paris, France

Mark Farrington, MA, FRCPath • Cambridge, UK

Martin S. Favero, PhD • Irvine, CA

Richard A. Garibaldi, MD • Farmington, CT

Petra Gastmeier, MD • Hanover, Germany

Dale N. Gerding, MD • Hines, IL

Donald A. Goldmann, MD • Boston, MA

Stephan Harbarth, MD, MS • Geneva, Switzerland

Anthony D. Harris, MD, MPH • Baltimore, MD

David K. Henderson, MD • Bethesda, MD

Loreen A. Herwaldt, MD • Iowa City, IA

Peter N. R. Heseltine, MD • San Juan, CA

Karen Hoffmann, RN, CIC, MS • Chapel Hill, NC

Janine Jagger, MPH, PhD • Charlottesville, VA

John A. Jernigan, MD, MS • Atlanta, GA

James T. Lee, MD, PhD • St. Paul, MN

L. Clifford McDonald, MD • Atlanta, Georgia

Allison McGeer, MD • Toronto, Ontario

John E. McGowan, Jr., MD • Atlanta, GA

Leonard A. Mermel, DO, ScM • Providence, RI

Robert R. Muder, MD • Pittsburgh, PA

Carlene A. Muto, MD, MS • Pittsburgh, PA

Joseph M. Mylotte, MD, CIC • Buffalo, NY

Juhani Ojajarvi, MD • Helsinki, Finland

Michael T. Osterholm, PhD, MPH • Minneapolis, MN

David L. Paterson, MBBS, FRACP • Pittsburgh, PA

Jan Evans Patterson, MD • San Antonio, TX

Sindy M. Paul, MD • Yardley, PA

David A. Pegues, MD • Los Angeles, CA

Didier Pittet, MD, MS • Geneva, Switzerland

Michael A. Pfaller, MD • Iowa City, IA

Gina Pugliese, RN, MS • Chicago, IL

Isaam Raad, MD • Houston, TX

Jordi Rello, MD, PhD • Tarragona, Spain

Manfred L. Rotter, MD, DipBact • Vienna, Austria

Henning Ruden, MD • Berlin, Germany

William A. Rutala, PhD, MPH • Chapel Hill, NC

Lisa Saiman, MD, MPH • New York, NY

Syed A. Sattar, PhD • Ottawa, Ontario

William E. Scheckler, MD • Madison, WI

Lynne M. Sehulster, PhD • Atlanta, GA

John A. Sellick, DO • Amherst, NY

Kent Sepkowitz, MD • New York, NY

Wing Hong Seto, MD • Hong Kong

Andrew E. Simor, MD • Toronto, Ontario

Philip W. Smith, MD • Omaha, NE

Denis W. Spelman, MD • Prahan, Victoria, Australia

Susan Springthorpe, MSc • Ottawa, Ontario

Jeffrey R. Starke, MD • Houston, TX

Janet E. Stout, PhD • Pittsburgh, PA

Michael L. Tapper, MD • New York, NY

Clyde Thornsberry, PhD • Franklin, TN

Jerome Tokars, MD, PhD • Atlanta, GA

William Trick, MD • Chicago, IL

Antoni Trilla, MD, PhD • Barcelona, Spain

Robert A. Weinstein, MD • Chicago, IL

Andreas Widmer, MD, MS • Basel, Switzerland

Marcus Zervos, MD • Royal Oak, MI

Infection Control and Hospital Epidemiology (ISSN 0899-823X) is published monthly by the University of Chicago Press, 1427 East 60th St., Chicago, IL 60637-2954 (<http://www.journals.uchicago.edu/ICHE/>). The editorial offices are in Chicago, Illinois.

Editorial Office

Communications should be addressed to the Editor, *Infection Control and Hospital Epidemiology*, 1427 E. 60th St, Chicago, IL 60637-2954; (e-mail: iche@press.uchicago.edu; telephone: 773-702-2448, fax: 773-753-4247). Contributors should consult the Information for Authors, which is available at the journal's Web site.

Advertising

Publication of an advertisement in *Infection Control and Hospital Epidemiology* does not imply endorsement of its claims by the Society for Healthcare Epidemiology of America, by the Editor, or by the University of Chicago. Correspondence regarding advertising should be addressed to the business office in Chicago (see above).

Permissions

Articles may be copied or otherwise reused without permission only to the extent permitted by Sections 107 and 108 of the U.S. Copyright Law. Permission to copy articles for personal, internal, classroom, or library use may be obtained from the Copyright Clearance Center (www.copyright.com). For all other uses, such as copying for general distribution, for advertising or promotional purposes, for creating new collective works, or for resale, please contact Permissions Coordinator, Journals Division, University of Chicago Press, 1427 E.

60th St., Chicago, IL 60637 USA. Fax: 773-834-3489. E-mail: journalpermissions@press.uchicago.edu. Articles in the public domain may be used without permission, but it is customary to contact the author.

Subscriptions

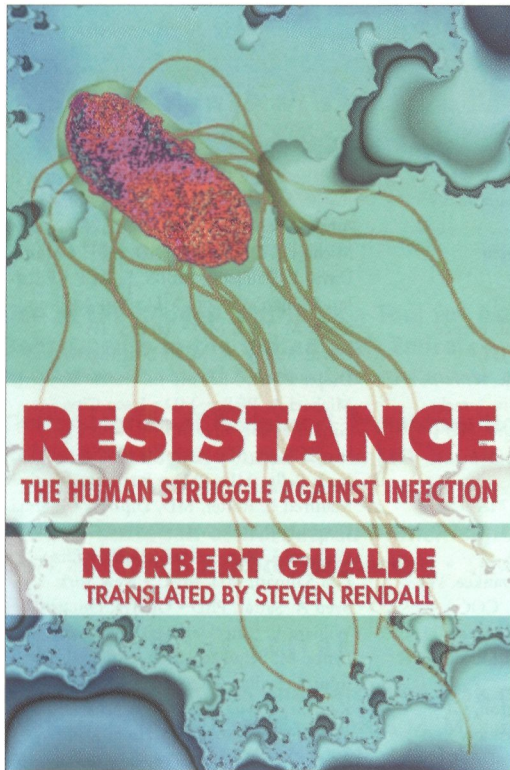
Subscription rates for 2007 are \$156 for individuals and \$368 for institutions. Additional rates for non-US subscribers and reduced rates for fellows, residents, and students are available at www.journals.uchicago.edu/ICHE. Subscription agent for Japan: Kinokuniya Company, Ltd. Individuals have the option to order directly from the University of Chicago Press. Single Copy rates: individuals \$16; institutions \$37.

Please direct subscription inquiries, back-issue requests, and address changes to The University of Chicago Press, Journals Division, P.O. Box 37005, Chicago, IL 60637. Telephone: (773) 753-3347 or toll-free in the United States and Canada (877) 705-1878. Fax: (773) 753-0811 or toll-free (877) 705-1879. E-mail: subscriptions@press.uchicago.edu.

Postmaster: Send address changes to *Infection Control and Hospital Epidemiology*, University of Chicago Press, P.O. Box 37005, Chicago, IL 60637-2954.

Periodicals postage paid at Chicago, Illinois, and at an additional mailing office.

Published by the University of Chicago Press, Chicago, IL. © 2007 by The Society for Healthcare Epidemiology of America. All rights reserved. This publication is printed on acid-free paper.



Resistance

*The Human Struggle
against Infection*

Norbert Gualde

Translated by Steven Rendall

“*Resistance* provides a detailed and accurate analysis of the critical factors that determine the outcome of this continuous battle, with an emphasis on the evolutionary protection provided by our immune system.”

—Baruj Benacerraf, MD,
Nobel Laureate in Physiology or
Medicine, 1980

“*Resistance* sparkles with wit and intelligence, and is a treasure trove of historical facts. . . . It also serves as starting point for serious contemplation of present and future perils.”—James S. Goodwin, MD,
Director, Sealy Center on Aging
Cloth \$25.00

from

D
DANA
PRESS

Now in Paperback

Fatal Sequence

The Killer Within

Kevin J. Tracey

“I enjoyed reading *Fatal Sequence* very much; indeed, I had great difficulty putting it down. . . . Tracey is among the giants in sepsis research. . . . I recommend *Fatal Sequence* to all involved in the care of patients with sepsis and to patients’ families.”

—Robert F. Wilson, *Journal of the American Medical Association*

“Here is the inside scoop on the discovery of tumor necrosis factor and high mobility group proteins, with an ever-convincing argument for the cytokine theory of disease.”

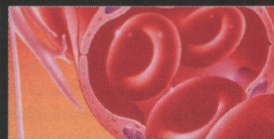
—Jerry J. Zimmerman,
Critical Care Medicine

Paper \$12.95



Fatal Sequence

the killer within



Kevin J. Tracey

Distributed by the University of Chicago Press
www.press.uchicago.edu

The Journal of Infectious Diseases

Official publication of the Infectious Diseases Society of America

For more than a century, *The Journal of Infectious Diseases (JID)* has been the premier publication in the Western Hemisphere for original research on:

- Pathogenesis, diagnosis, and treatment of infectious diseases
- Microbes that cause infectious diseases
- Disorders of host immune mechanisms

Major articles in *JID* include research results from microbiology, immunology, epidemiology, and related disciplines. Published twice a month, the Journal communicates rapidly changing research efforts and findings.

JID Online

Read a sample issue, sign up for RSS feeds, register for e-mail tables of contents alerts, and use *UpToDate*, the free "topic link" information service — all online at www.journals.uchicago.edu/JID.

To Subscribe:

Phone: (877) 705-1878 (USA/Canada)
(773) 753-3347 (International)

Fax: (877) 705-1879 (USA/Canada)
(773) 753-0811 (International)

Online: www.journals.uchicago.edu/JID

E-mail: subscriptions@press.uchicago.edu



Celebrating More Than
a Century of Leadership
in Infectious Diseases
Research

Editor, Martin S. Hirsch
Harvard Medical School



Semimonthly. ISSN: 0022-1899.



THE UNIVERSITY
OF CHICAGO PRESS
JOURNALS DIVISION
www.journals.uchicago.edu

Clinical Infectious Diseases

Official publication of the Infectious Diseases Society of America

Clinical Infectious Diseases (CID) publishes topical research and incisive commentaries from distinguished clinicians and scientists on the diagnosis and treatment of infectious diseases. Each issue contains clinically relevant articles of current interest in:

- Clinical research
- Immune mechanisms
- Medical microbiology
- Epidemiology and prevention
- Pathogenesis
- HIV/AIDS
- New antimicrobial therapies

CID Online

Read a sample issue, sign up for RSS feeds, register for e-mail tables of contents alerts, and use *UpToDate*, the free "topic link" information service — all online at www.journals.uchicago.edu/CID.

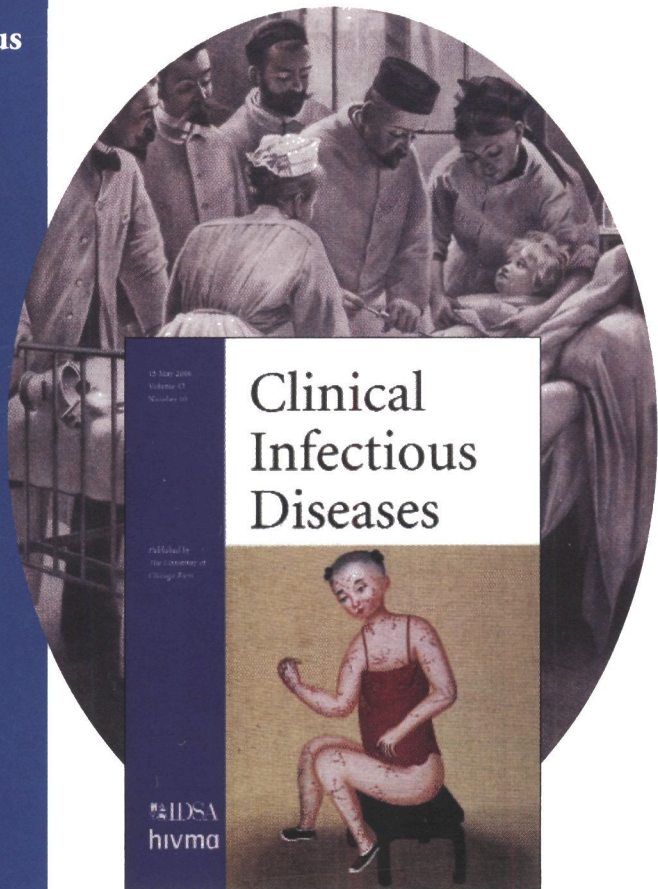
To Subscribe:

Phone: (877) 705-1878 (USA/Canada)
(773) 753-3477 (International)
Fax: (877) 705-1879 (USA/Canada)
(773) 753-0811 (International)
Online: www.journals.uchicago.edu/CID
E-mail: subscriptions@press.uchicago.edu



Providing Timely
Information on Clinical
Topics and Infectious
Disease Research

Editor, Sherwood L. Gorbach
Tufts University School of Medicine



Semimonthly. ISSN: 1058-4838.



THE UNIVERSITY
OF CHICAGO PRESS
JOURNALS DIVISION
www.journals.uchicago.edu